

Envision

PALMDALE 2045

What is a General Plan?

The General Plan serves as the City’s primary guide for land use and development decisions and is a key tool for influencing and improving the quality of life for residents and businesses. As such, it serves as the “blueprint” for future development and conservation of a community. The General Plan will help the City plan for important community issues such as new growth, housing needs and environmental protection and sets the stage for future social, physical and economic development of the City. It addresses issues that impact the entire City, such as how land is used, where buildings are constructed, and the locations of roads and parks.

Palmdale General Plan Overview

The City of Palmdale is undertaking a comprehensive update to its General Plan for the first time in more than 25 years. Now is the time to look forward to the next several decades and chart a course for the City’s future, including:

- Creating a vision for growth and development and improving the overall identity and quality of life in Palmdale;
- Ensuring equitable distribution of services, goods and amenities in the City;
- Capitalizing on major infrastructure investments such as High-Speed Rail and the Airport;
- Addressing transportation challenges such as traffic congestion, the bicycle network and transit;
- Planning for natural emergencies including earthquakes and wildfires;
- Increasing opportunities for location of parks and open space areas;
- Expanding opportunities for the City to pursue grants and other funding sources for parks and infrastructure improvements.

What topics will the General Plan cover?

State law requires that each city in California adopt and maintain an “up-to-date” General Plan and address specific core topics. The Palmdale General Plan Update will cover these requirements but will also address additional elements that are important to the community. Topics will include land use; community design; mobility; housing; equitable, resilient, and healthy communities; economic development; conservation and open space; parks and recreation; historic and cultural resources; public facilities and infrastructure; noise; air quality; sustainability; safety; military readiness; and implementation.

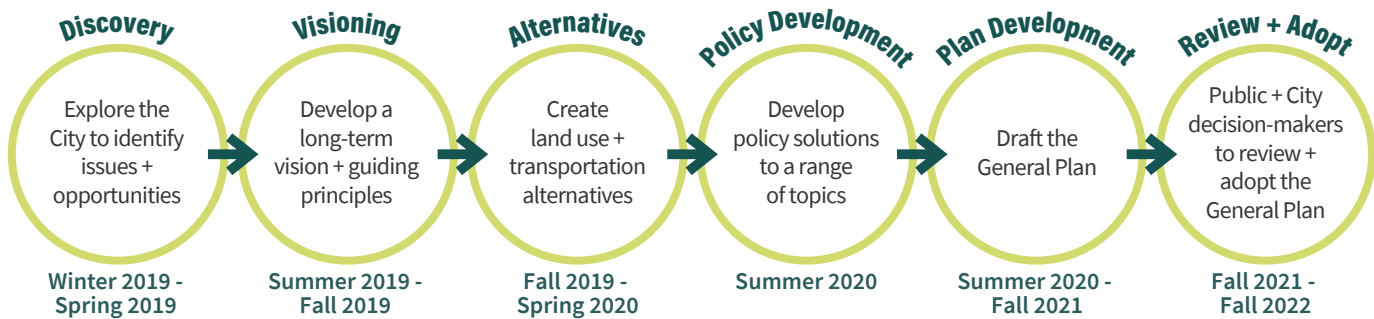
“The general plan is more than the legal underpinning for land use decisions; it is a vision about how a community will grow, reflecting community priorities and values while shaping the future.”

OPR GENERAL PLAN GUIDELINES (2017)



What are the steps in the update process?

The General Plan update process will take approximately three years to complete, starting in Winter 2019 and ending in the Summer 2022. The major steps in the process are as follows:



Community Engagement: Get Involved and Let Your Voice Be Heard

The City of Palmdale is committed to involving the community and ensuring that the content of the Palmdale General Plan will be guided by the residents of the City. The project presents a unique and important opportunity for community members to participate and share their ideas to guide the City's future. As such, engaging a diverse cross section of the community throughout the project will be critical to success. There will be many opportunities for community members to participate in the General Plan update process. These activities include:

- 1 Focus groups
- 2 Meetings with community groups
- 3 Online surveys
- 4 Community workshops
- 5 Community Forums
- 6 A General Plan Advisory Committee (GPAC)
- 7 Planning Commission study sessions
- 8 City Council study sessions
- 9 An interactive project website
- 10 Community pop-up events

How do I find out more about the General Plan and stay informed?

- Visit the project website at Palmdale2045.org
- Sign up for the email list on the project website
- Contact the City's project manager, Carlene Saxton, Senior Planner, at generalplan@cityofpalmdale.org