



Envision
PALMDALE 2045

General Plan Workshop #1

August 24, 2019 9:30 – 11:30 am | August 27, 2019 6:30 – 8:30 pm

Workshop Purpose

Provide an overview of the Palmdale General Plan project

Discuss existing conditions in the City

Identify the characteristics that make Palmdale unique

Discuss a long-term vision for the City of Palmdale

Identify primary issues and challenges facing the City

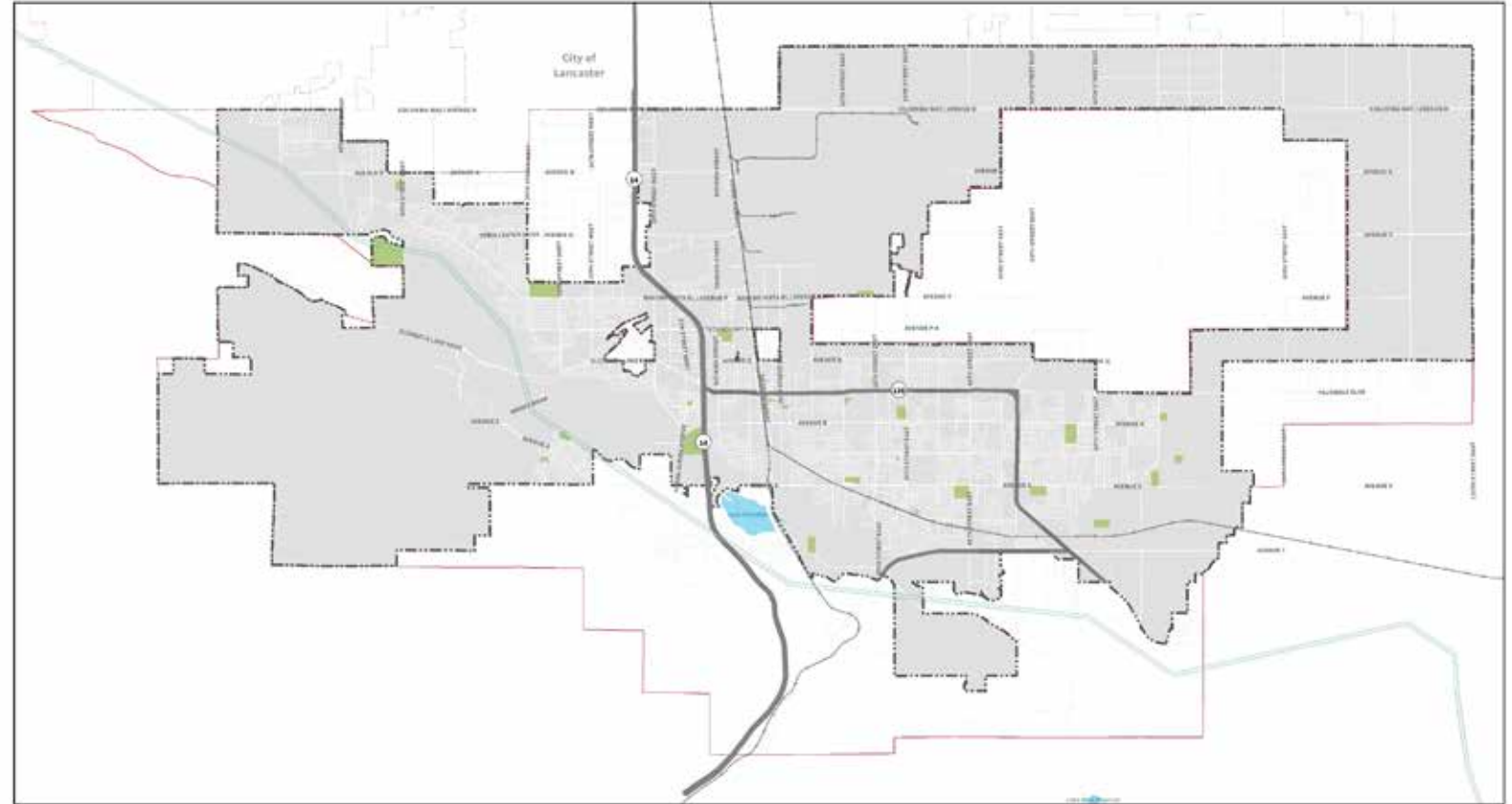
Agenda

- Visit Stations + Complete Activities
- Official Welcome!
- Project Overview, Existing Conditions, and Introduction to Small Group Discussions
- Small Group Discussions
- Report Back
- Closing Remarks and Next Steps



What is the Project?

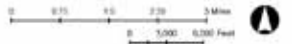
- Updated Palmdale General Plan
- Environmental Impact Report



City of Palmdale Planning Area

- City Boundary
- Sphere of Influence
- California Aqueduct
- Major Highway/Arterial
- Railroad
- Water Body
- Park

Palmdale General Plan Update



Data Source: City of Palmdale GIS Data, 2011
Terrain Data: 2011 ESRI, USGS, NOAA
Produced by: ERM | Associates
March 2012

Envision
PALMDALE 2045

What is a General Plan?



What is a General Plan?

“Vision about how a community will grow, reflecting community priorities and values while shaping the future.”

- Long-term policy document to **guide the future actions** in Palmdale
- Establishes the **City’s vision** for the next 25 years
- Preserves and enhances **community strengths**
- Addresses a number of **topics of concern**
- Enables the community to come together to develop a **shared vision for the future**

What is a General Plan?

A General Plan is like a road map for the future of Palmdale.



1



General Plans describe the community's vision and identifies strategies for managing preservation and change.



The State of California requires every city and county to have a General Plan to guide growth.

2

3

General Plans typically include goals, policies, implementation strategies and supporting graphics.



These components work together to convey a long-term vision that will guide local decision making.



4

5

The General Plan also plays an important role in regulating land use. Its policies and maps form the foundation for City ordinances, guidelines and plans.



General Plan Requirements

Required Elements

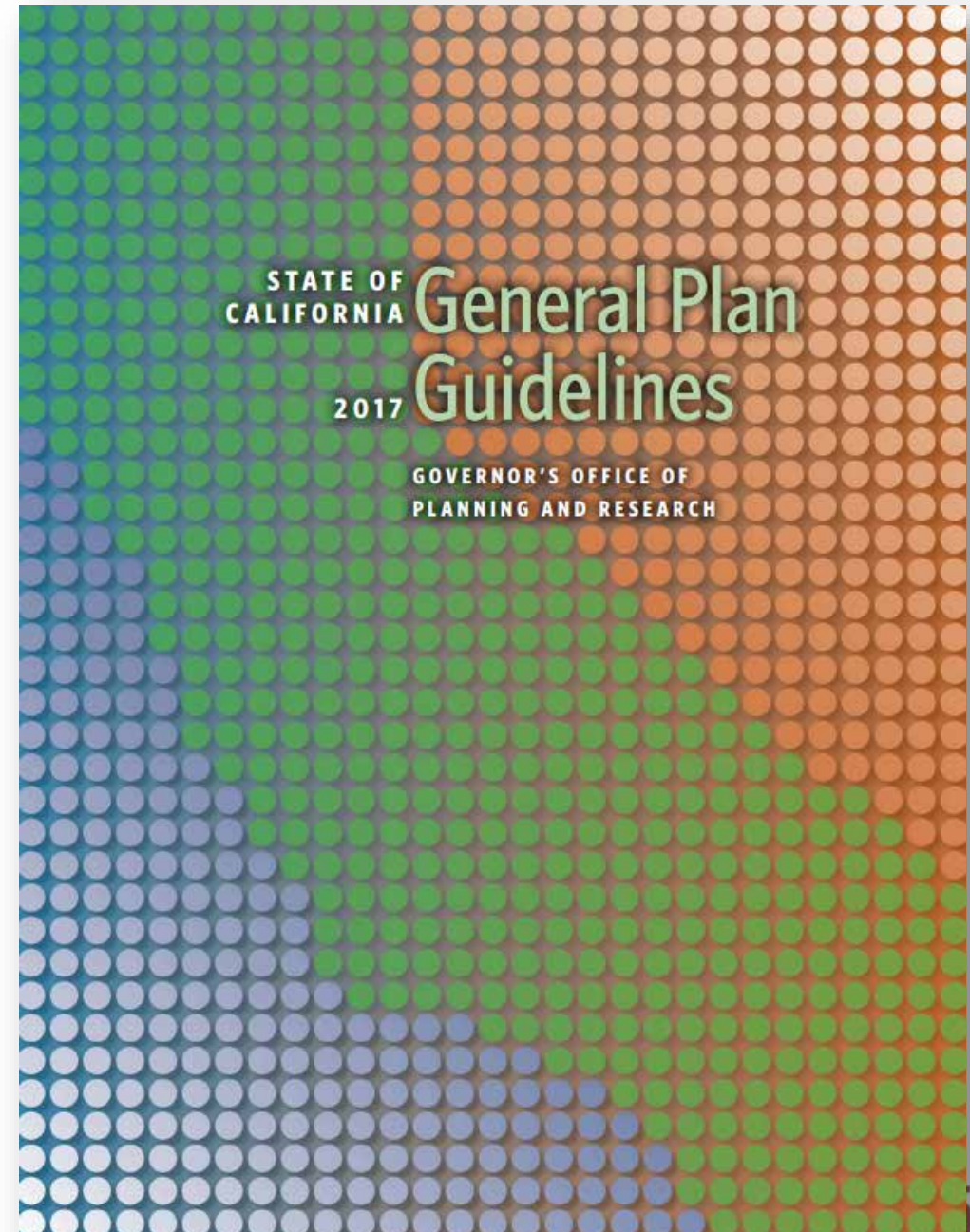
- Land Use
- Circulation
- Housing
- Conservation
- Open Space
- Noise
- Safety
- Air Quality

Additional Considerations

- Community Design
- Equitable and Resilient Communities
- Healthy Communities
- Economic Development
- Climate Change
- Military Readiness

New State laws + 2017
General Plan Guidelines

Emerging themes in
planning



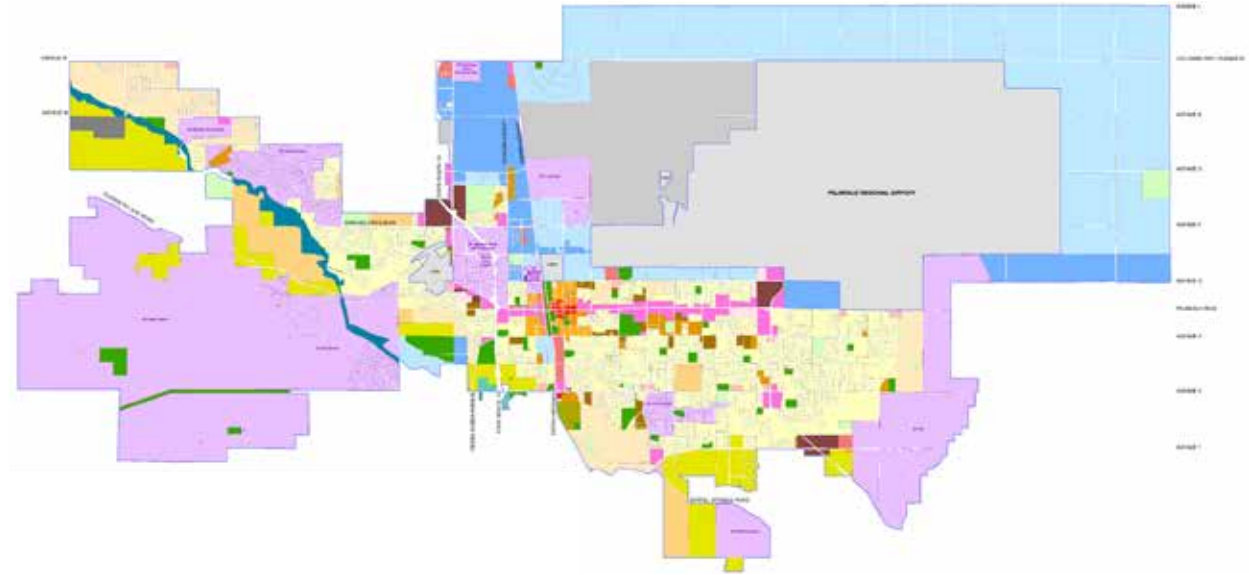
Current Palmdale General Plan

Last updated in 1993 and 1994

Organized in following Elements:

- Land Use (1993)
- Circulation (1993)
- Environmental Resources (Air Quality, Conservation & Open Space) (1994)
- Public Services (1993)
- Safety (1993)
- Noise (1993)
- Housing (2014)
- Parks, Recreation and Trails (1993)
- Community Design (1994)

Amended as needed



Why Update the Existing General Plan?



Land use designations updated in 2004 – should be updated every 10-15 years



Emerging themes in planning



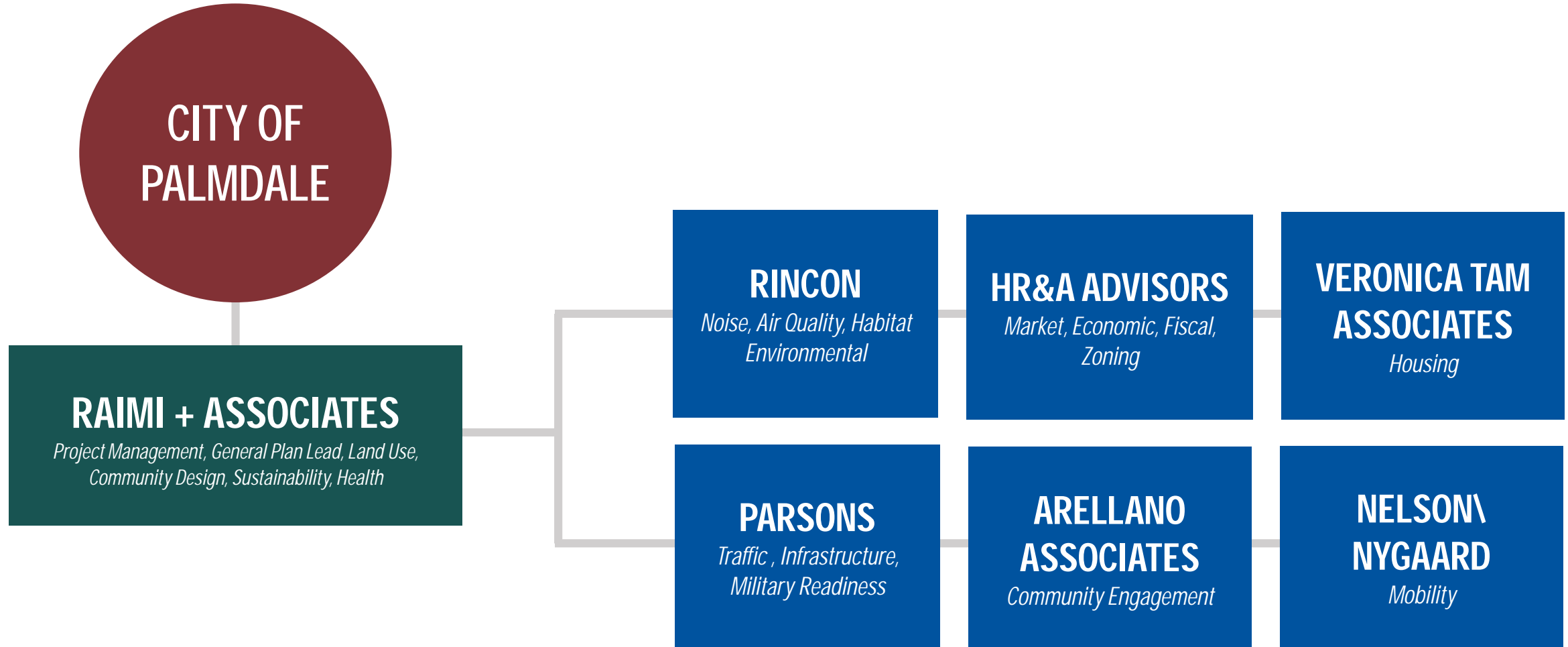
New State laws



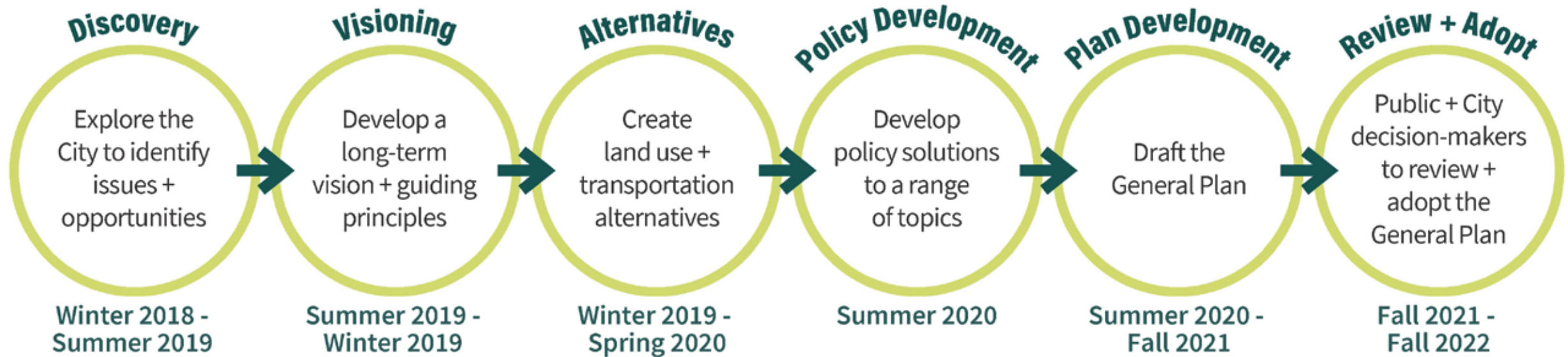
Update General Plan structure/topics to reflect community values

General Plan Approach

Our Team



General Plan Process



COMMUNITY ENGAGEMENT

Community Engagement Activities

- Workshops and open houses
- General Plan Advisory Committee
- Focus groups
- Stakeholder interviews
- Community survey
- City Council and Planning Commission working sessions
- Website
- Informal outreach
- Meetings with outside agencies



Project Website

- Project information
- Project documents
- Upcoming engagement activities
- First Survey (*open until August 31, 2019*)



UPCOMING EVENTS

WHAT IS THE
PALMDALE GENERAL
PLAN?

WHY IS THE
PALMDALE GENERAL
PLAN IMPORTANT?

FREQUENTLY ASKED
QUESTIONS

for more info
PALMDALE2045.ORG

Envision
PALMDALE 2045

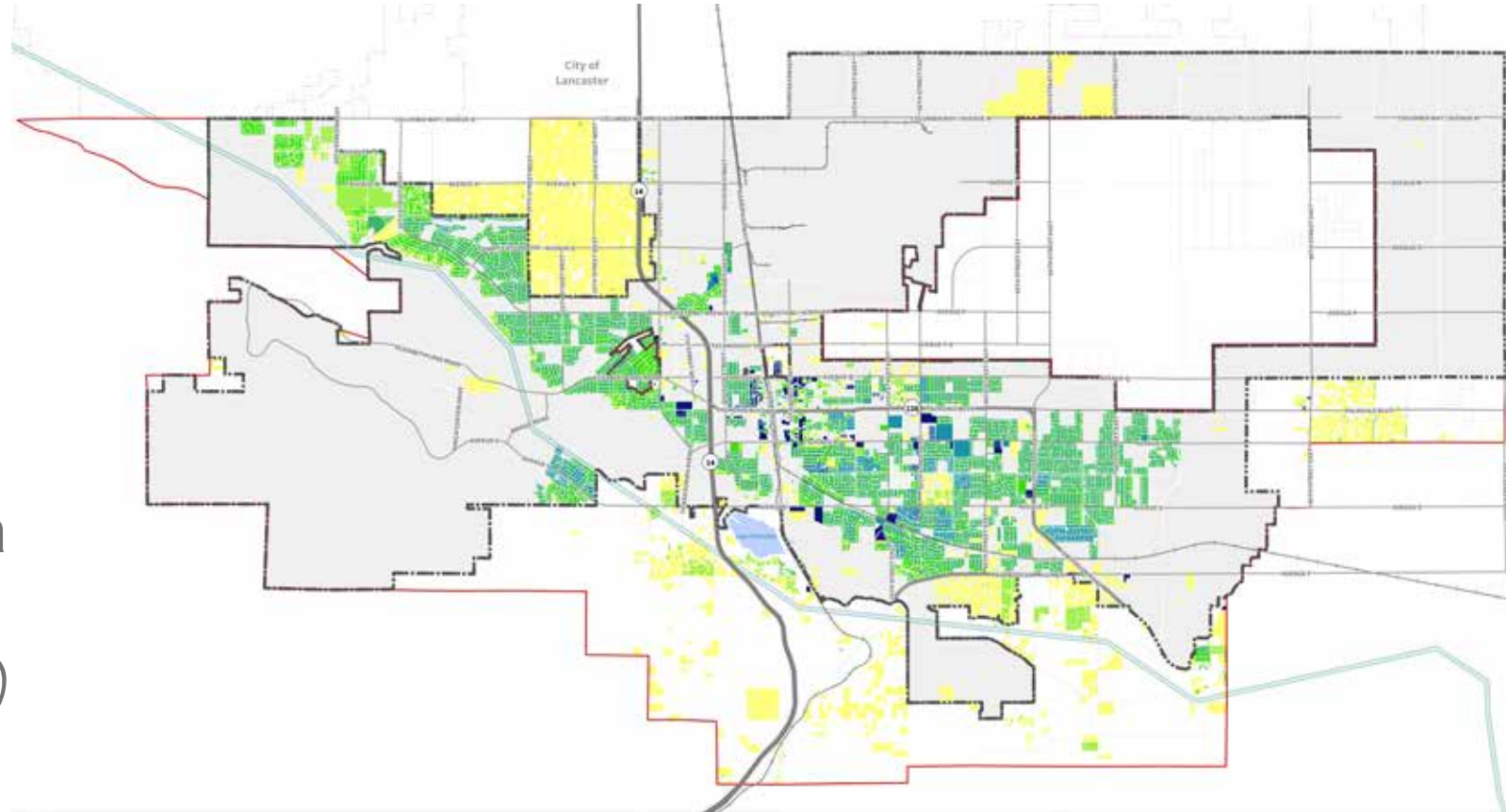


Palmdale Today

ADD A FOOTER

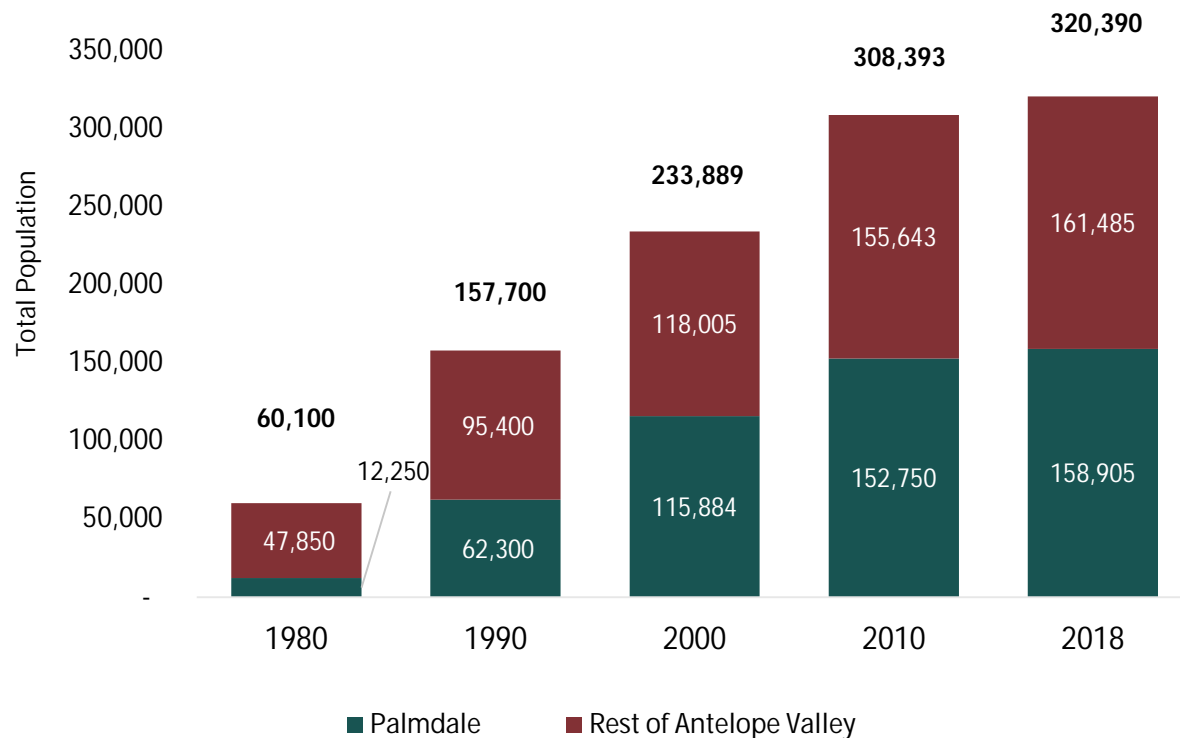
Vital Statistics

- Incorporated in 1962
- Area:
 - 103 sq. miles in City limits
 - 67 sq. miles in the Sphere of Influence
 - 7th largest City by area in CA
- Population: 158,905 (2018)
- Households: 43,880 (2018)
- Under 18: 31%
- 65 and over: 8%



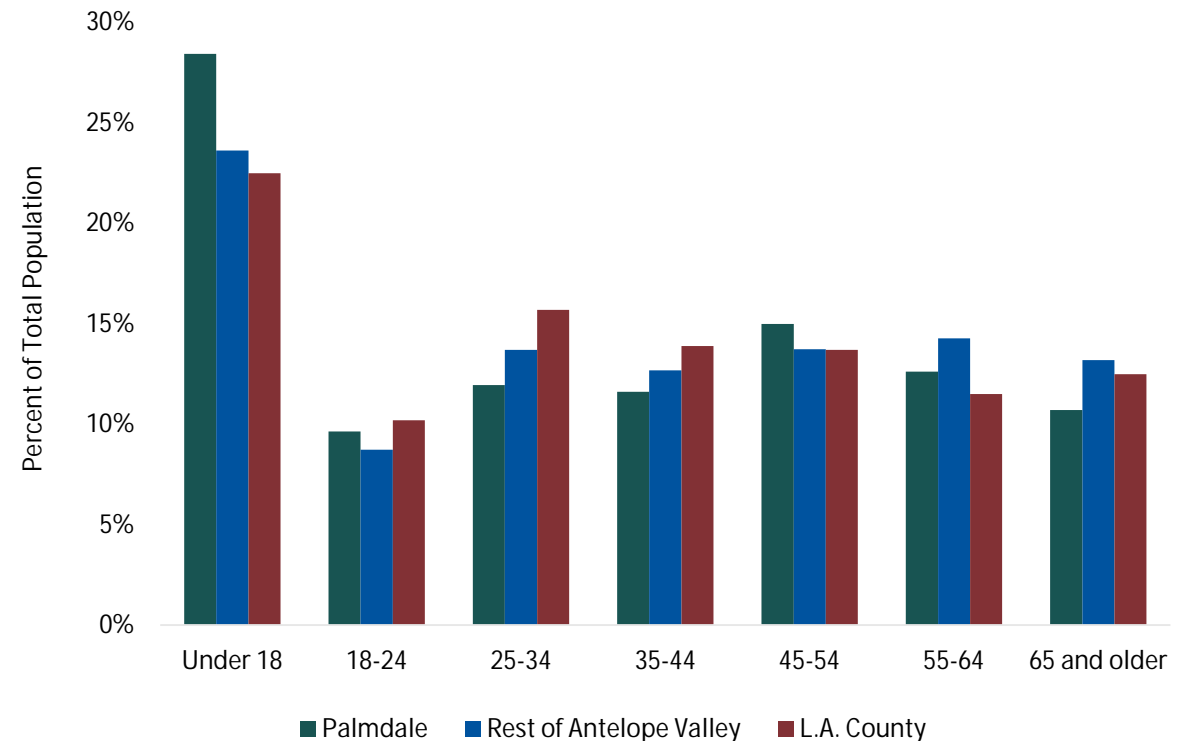
Demographic Snapshot – Population

HISTORIC POPULATION GROWTH



Source: California Department of Finance E-4

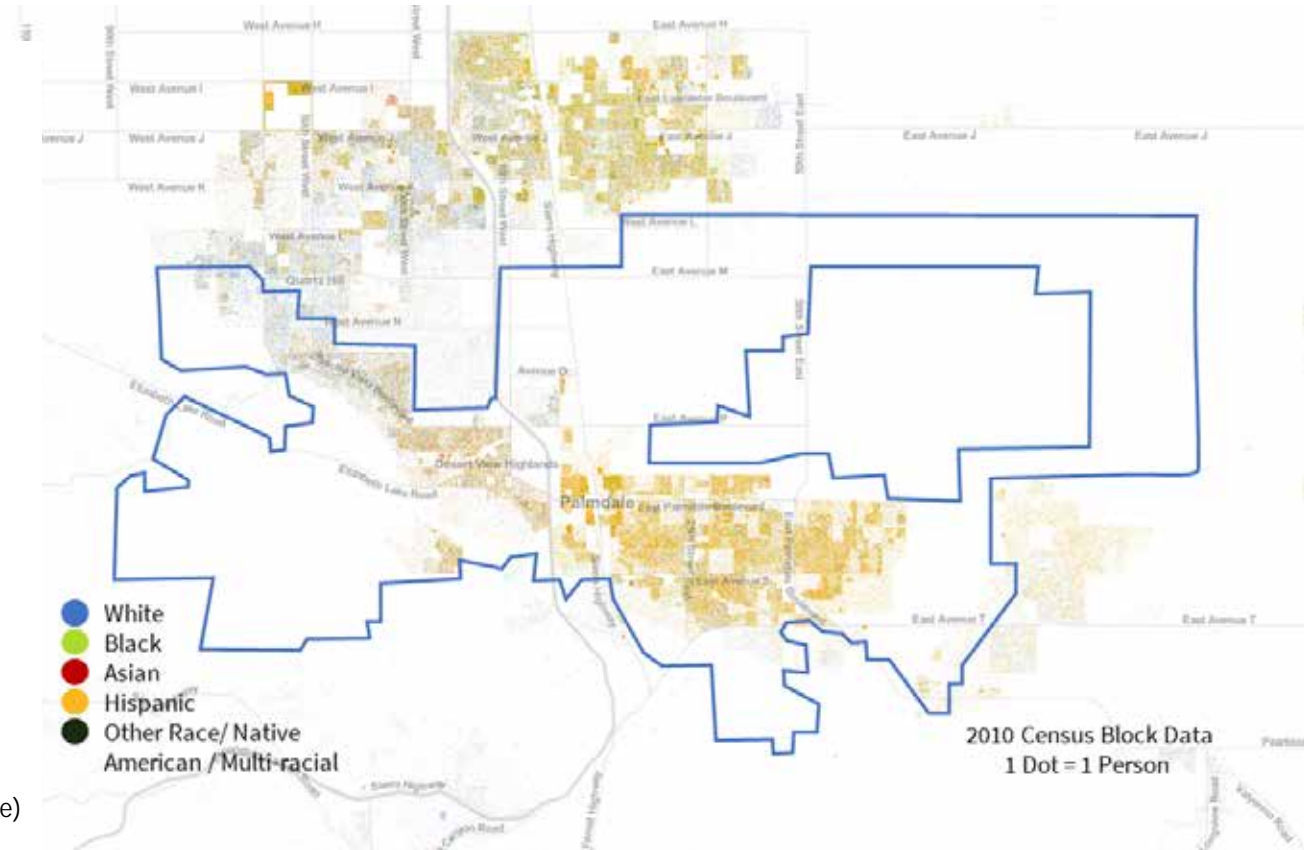
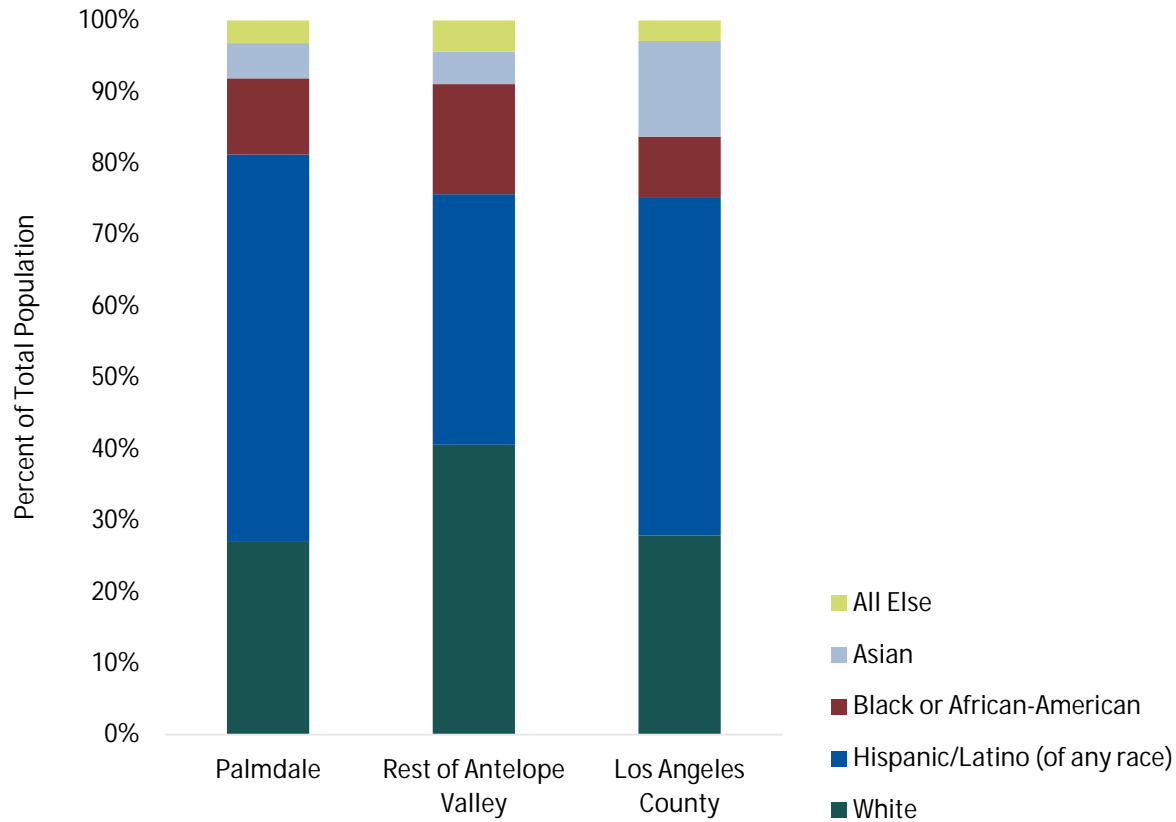
POPULATION BY AGE



Source: 5-Year ACS 2017, ACS Public Use Microdata Series 2013-2017

Demographic Snapshot – Race/Ethnicity

RACIAL DISTRIBUTION

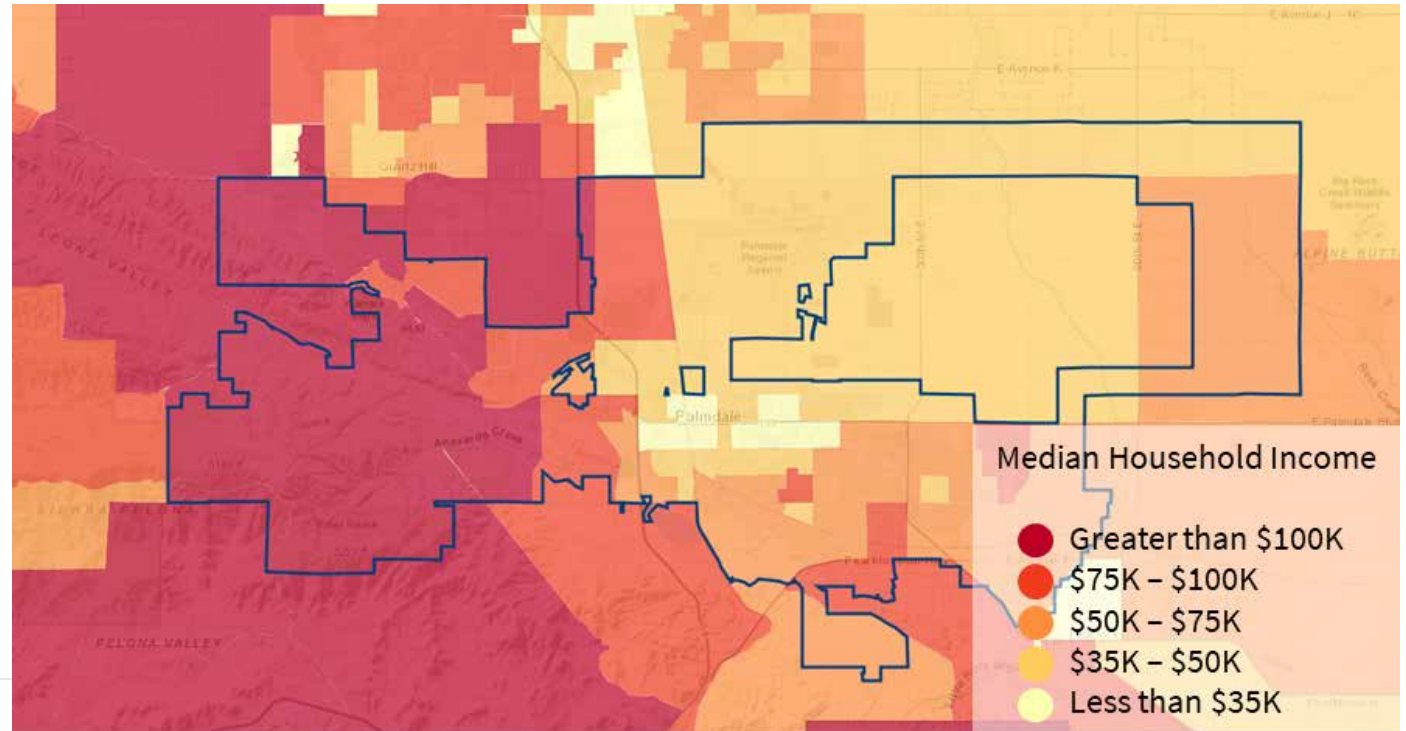
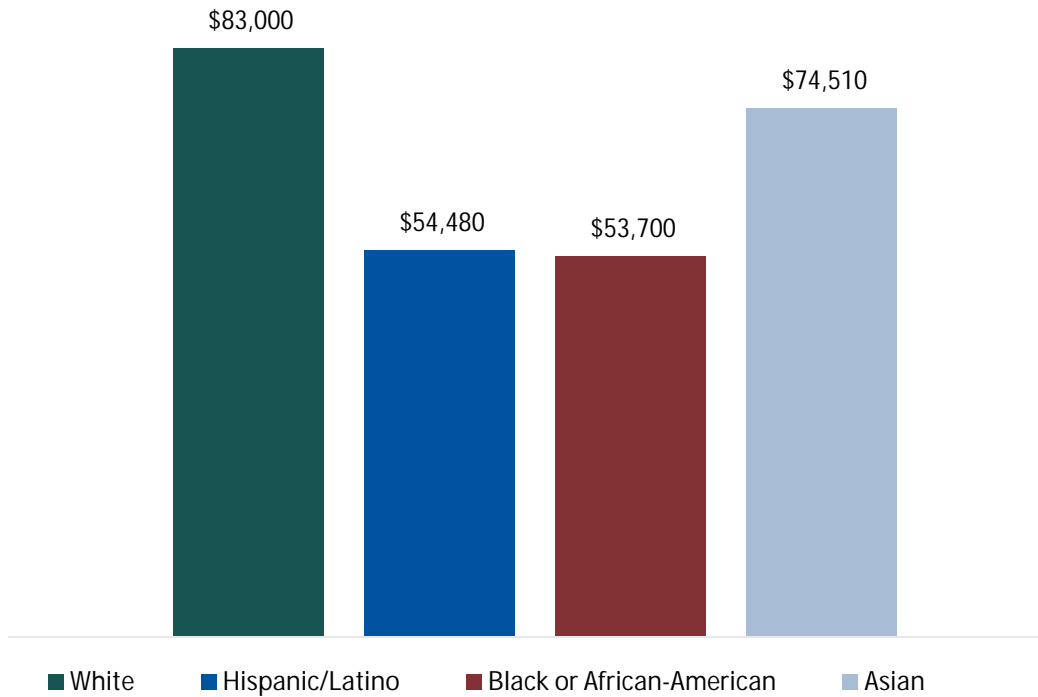


Demographic Snapshot - Income

% IN POVERTY

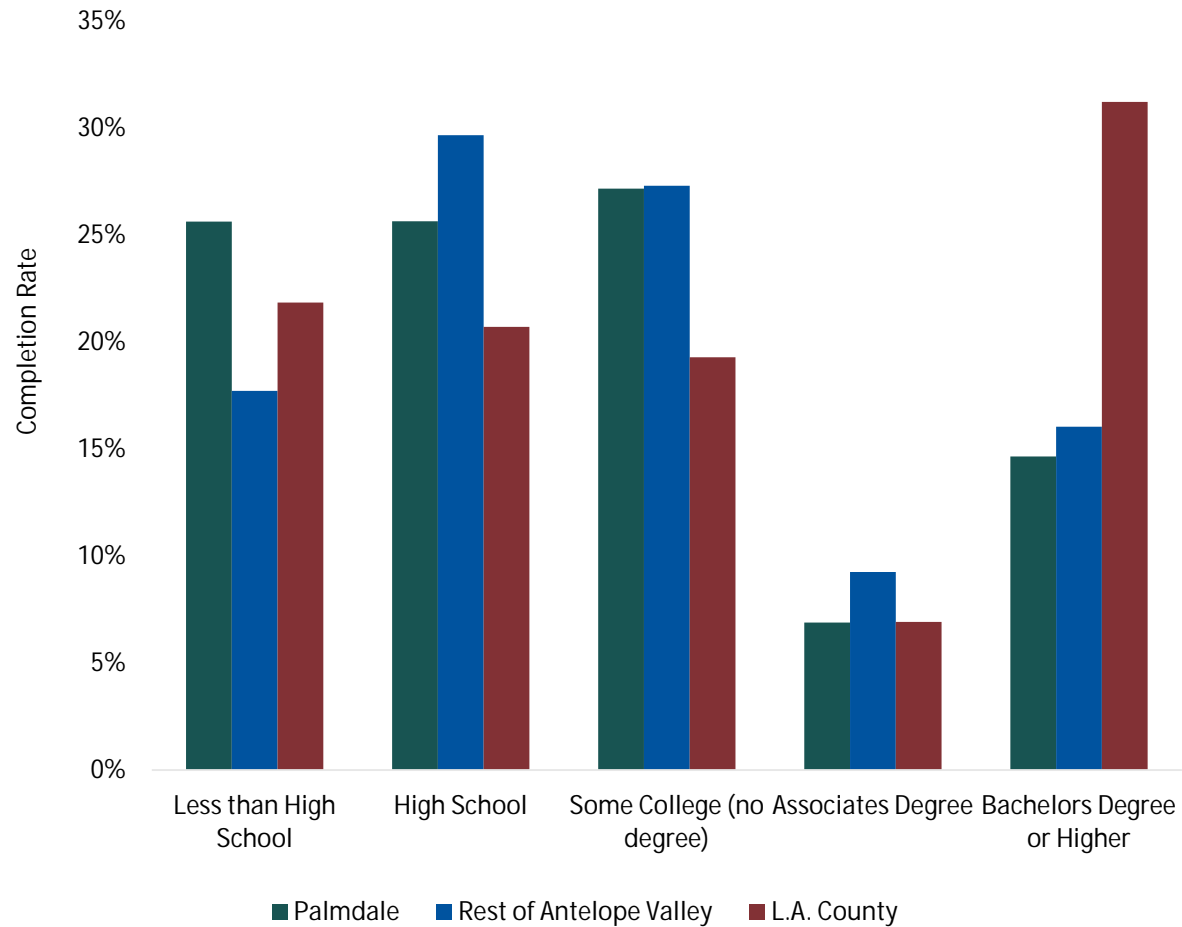


MEDIAN HOUSEHOLD INCOME

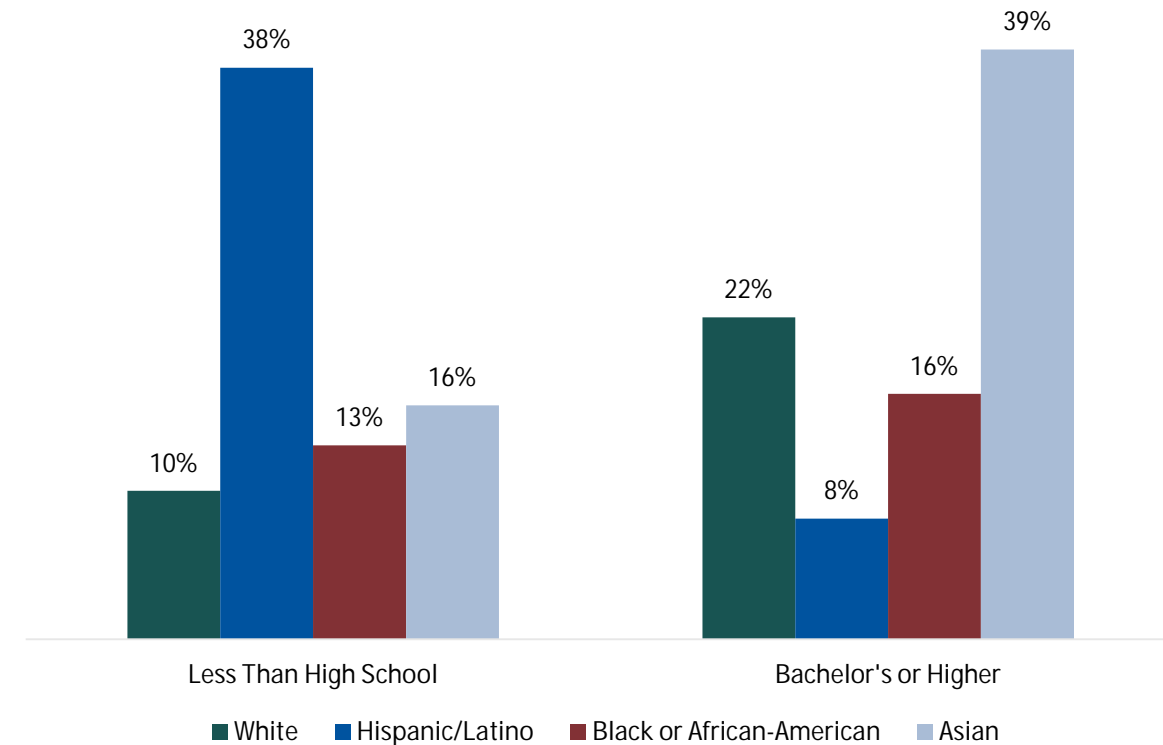


Demographic Snapshot – Education Levels

EDUCATIONAL ATTAINMENT

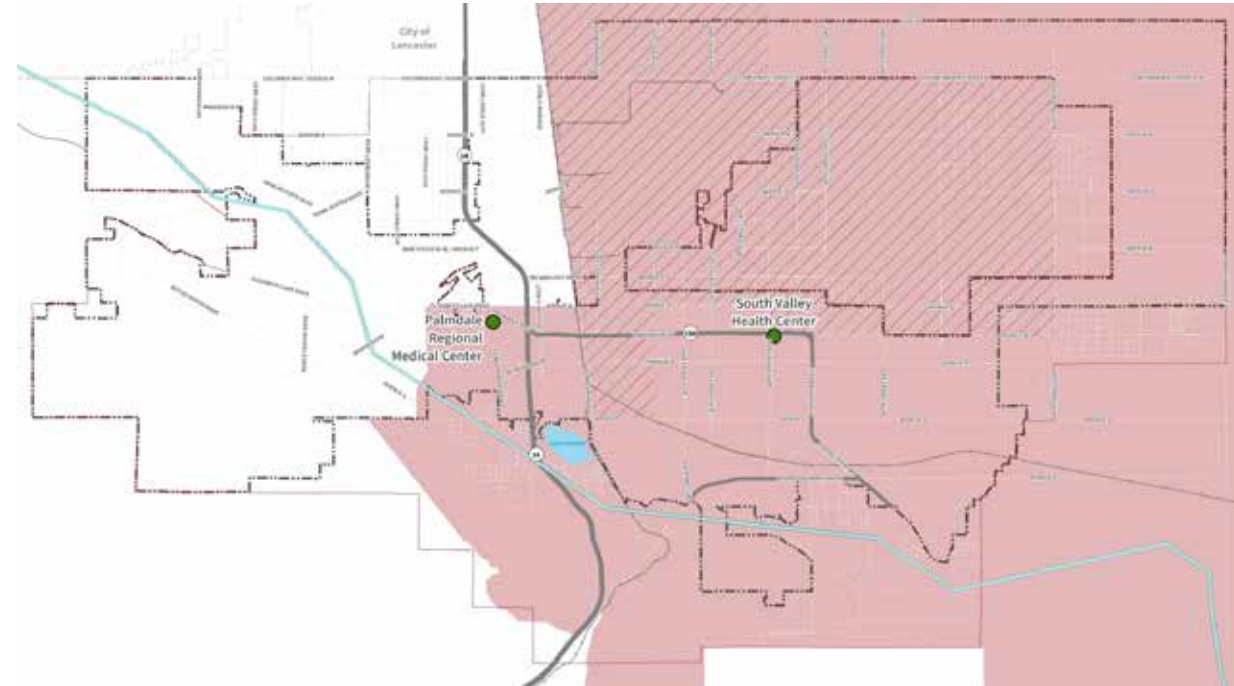


EDUCATIONAL ATTAINMENT BY RACE/ETHNICITY

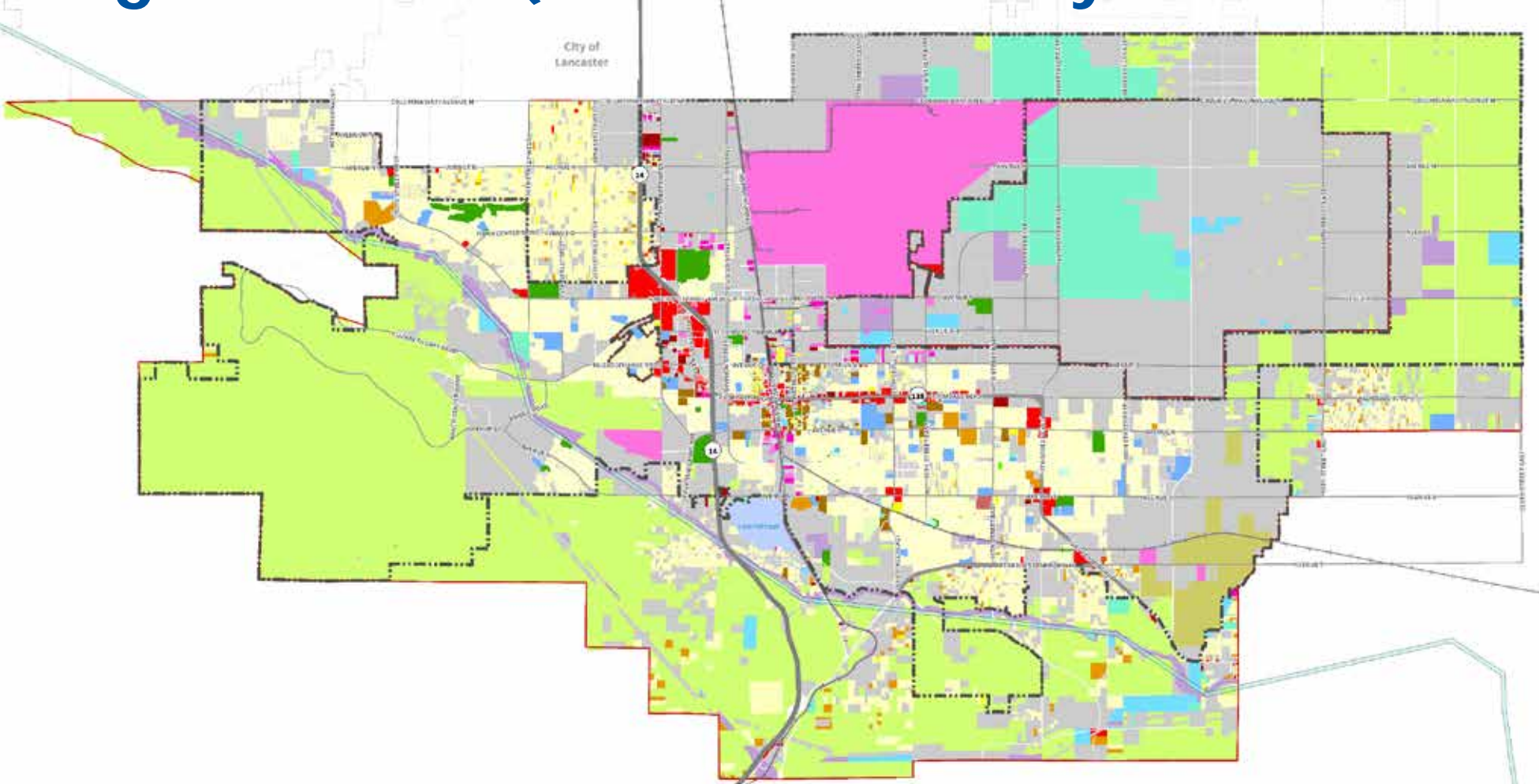


Demographic Snapshot – Health Outcomes + Access

- Lower life expectancy than Los Angeles County
- Leading causes of death – Coronary heart disease, COPD, Lung Cancer, Stroke and Alzheimer’s Disease
- 25% of adults in Palmdale report difficulty accessing health care
- Medical Health Provider Shortage Area – east of SR-14
- Almost entire City is designated as a Mental Health Provider Shortage Area



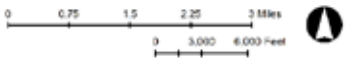
Existing Land Use (What's Currently On The Ground)



Existing Land Use

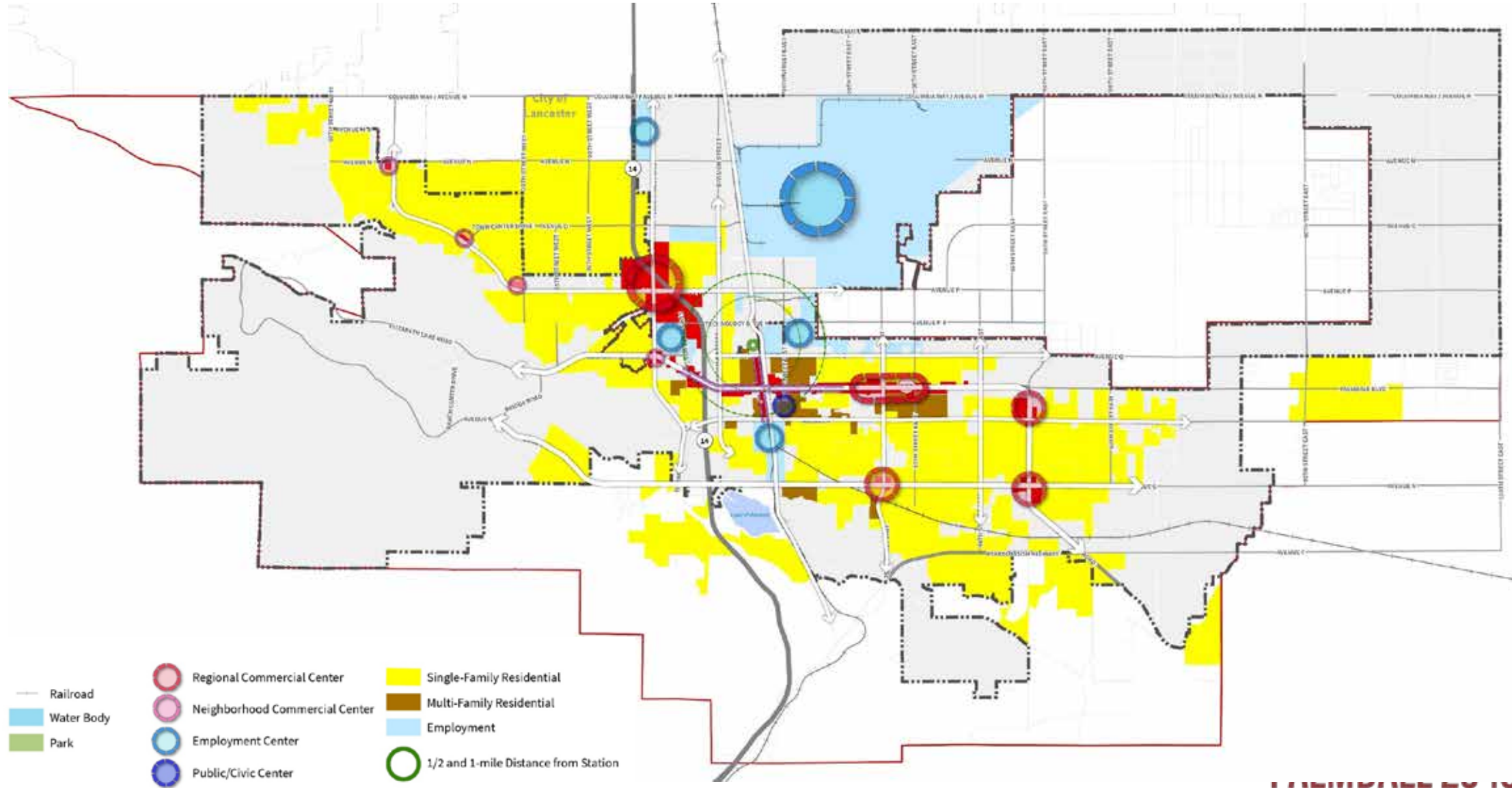
- City Boundary
- Sphere of Influence
- California Aqueduct
- Major Highway/Arterial
- Railroad
- Water Body
- Park

Accommodation	Single Family Detached	Natural Resources	Agriculture	Cemeteries
Commercial Recreation	Single Family Attached	Industrial	Civic Facilities	Natural/Conservation
Mixed Use	Mobile Home	Wholesale/Warehousing	Private Institutions	Open Space
Office	Multifamily	Transportation	Public Education	Parks and Recreation
Retail/Commercial	Vacant/Unknown	Utilities/Communications	Hospitals	Water



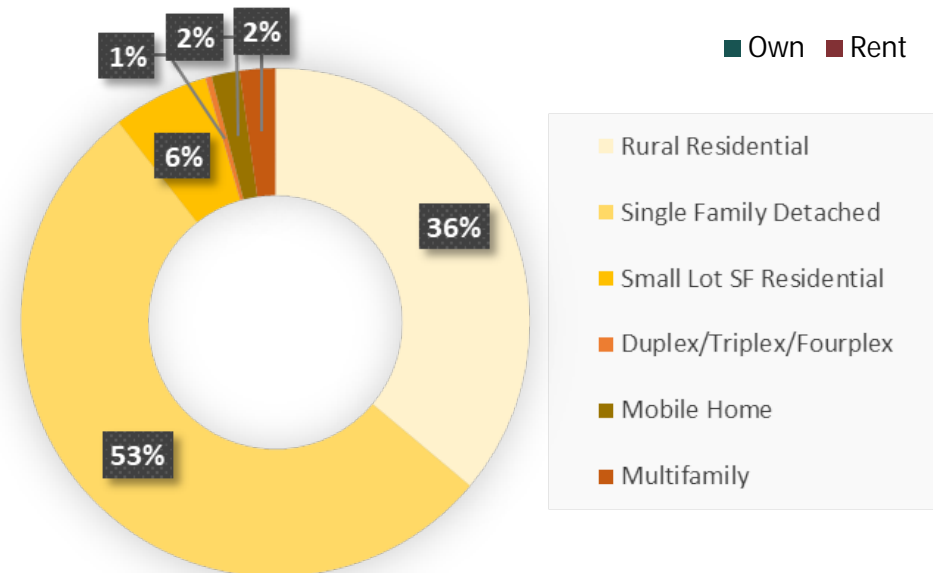
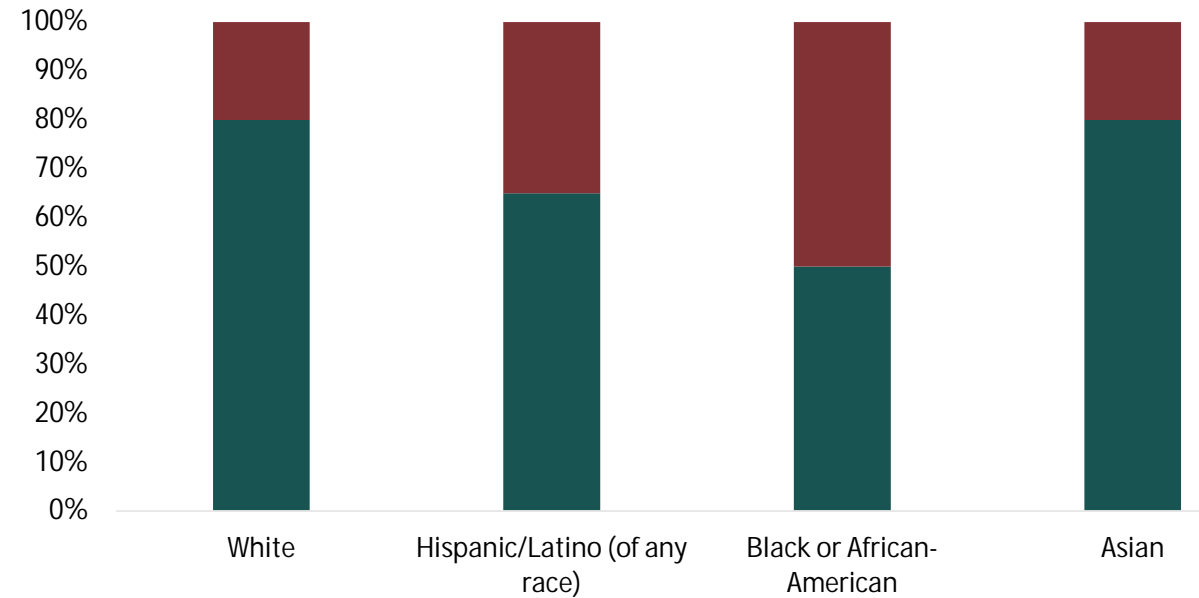
Data Sources: City of Lancaster GIS, the World
Terrain Base, 2011 ESRI, USGS, NOAA.
Produced by Rainal + Associates
March 2023

City Structure - Major Activity Centers



Housing

- 64 % own their own homes, compared to 46% in LA County
- \$229,300 is the typical home sale price
- 14.2% of households are severely housing cost burdened
- 36.8% of renters are housing cost overburdened



Transportation

MEAN TRAVEL TIME TO WORK



INFLOW/OUTFLOW OF JOBS

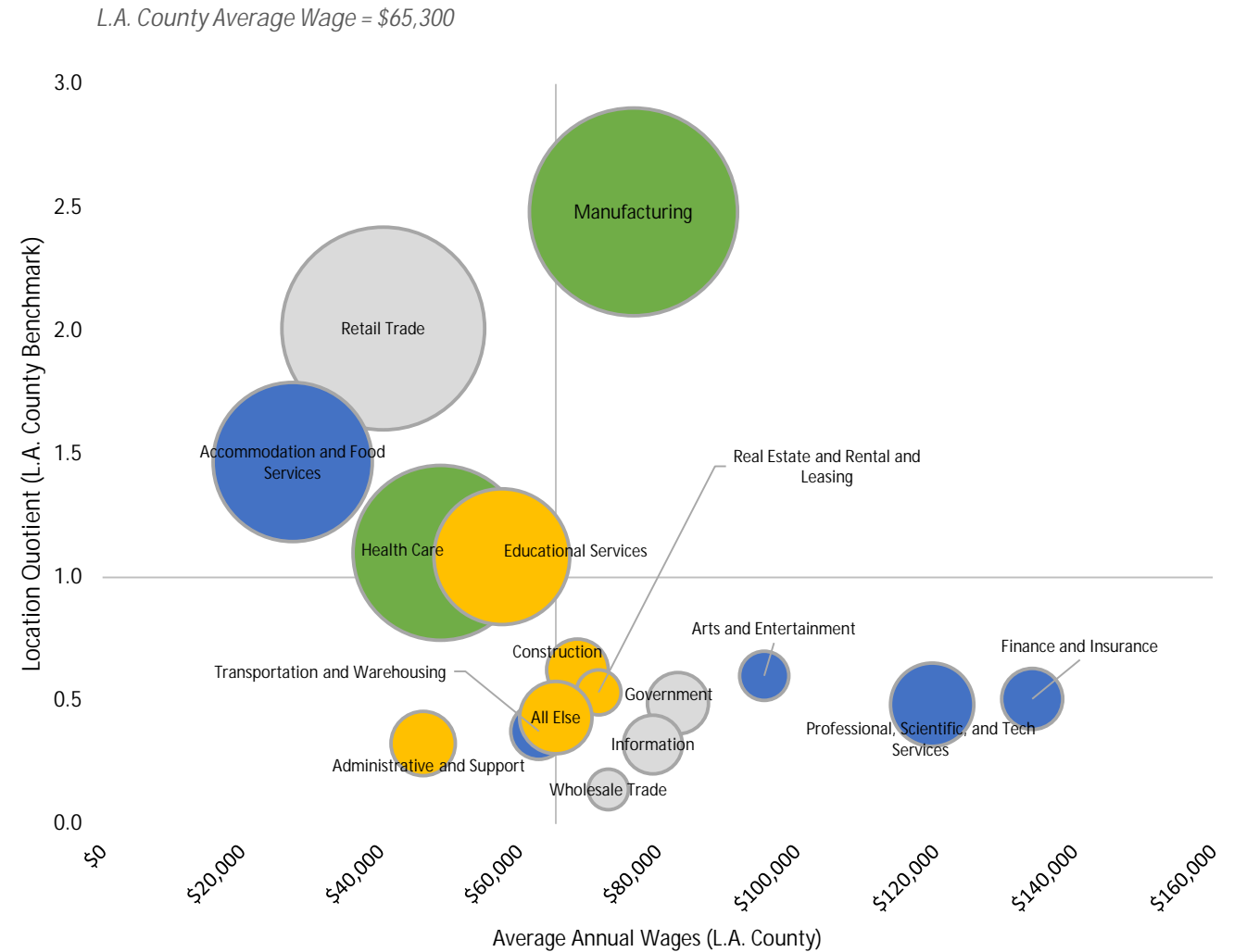
86% Live in Palmdale & work elsewhere

14% Live and work in Palmdale

Journey to Work Mode	Palmdale
Drive Alone	76%
Carpool	14%
Transit	2%
Work at home	5%
Walk/Bike/Other	3%

Employment Trends

- Manufacturing including aerospace is the largest employment category
- Continuing to be the fastest growing category
- Retail Trade and Accommodation and Food Services are also highly concentrated in Palmdale
- Healthcare is the third largest category
- Few professional or technical jobs in Palmdale



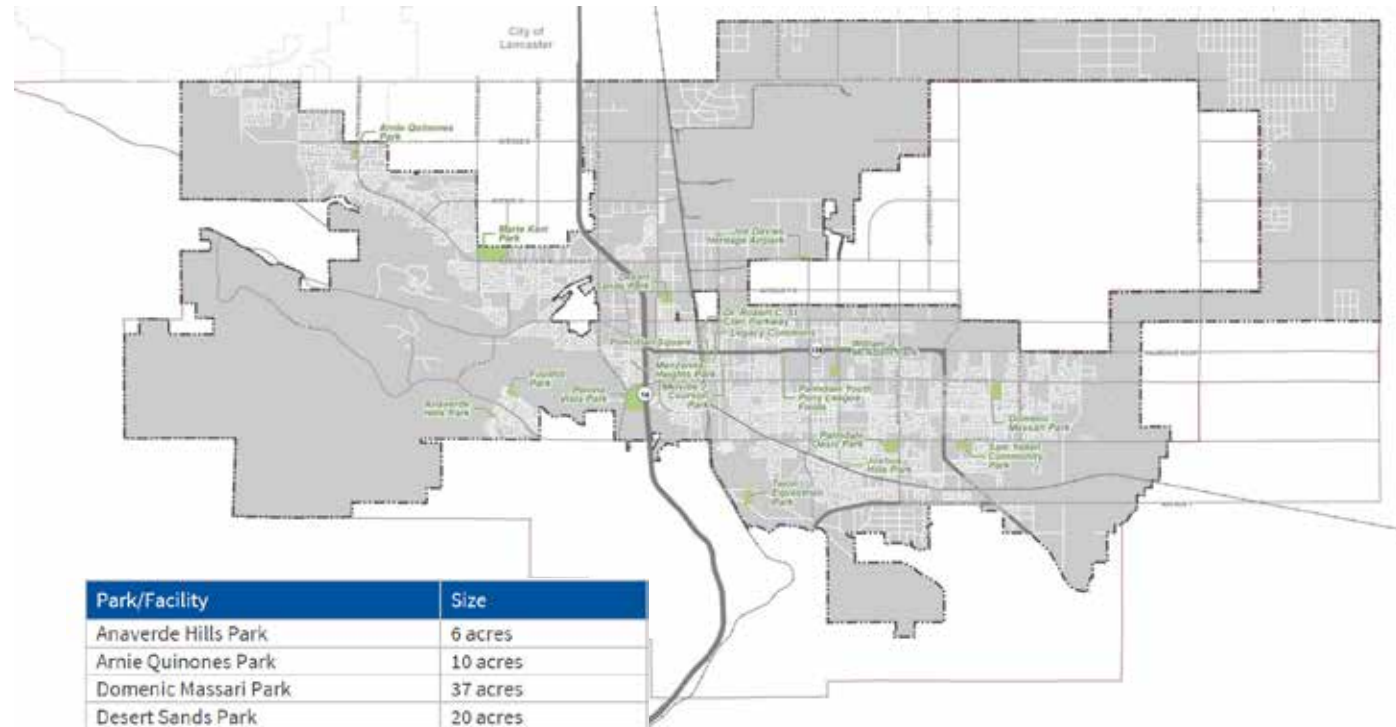
Military Readiness + Aviation

- Plant 42 – US Air Force Facility
- Government Owned – Contractor Operated
- Lockheed Martin, Boeing, Northrup Grumman, NASA
- Future passenger air service
- Growing industry
- Land use restrictions related to operations



Parks in Palmdale

- 360 acres of existing parkland, not including Ritter Ranch Park
- City goal – 5 acres per 1,000 population
- Current parks – 2.28 per 1,000 population
- Need 433 acres to meet park goal



Park/Facility	Size
Anaverde Hills Park	6 acres
Arnie Quinones Park	10 acres
Domenic Massari Park	37 acres
Desert Sands Park	20 acres
Dr. Robert C. St. Claire Parkway	8 acres
Foothill Park	12 acres
Joe Davies Heritage Airpark	25 acres
Joshua Hills Park	4 acres
Legacy Commons Park	1 acre
Manzanita Heights Park	4 acres
Marie Kerr Park	77 acres
William J. McAdam Park	19 acres
Melville J. Courson Park	5 acres
Palmdale Oasis Park	29 acres
Palmdale Youth Pony League Fields	5 acres
Pelona Vista Park	76 acres
Poncitlan Square	2 acres
Sam Yellen Community Park	25 acres
Tejon Equestrian Park	20 acres
Total	360 acres

Small Group Discussions

Discussion Questions

What makes Palmdale unique and special?

What should be preserved or changed in the future?

What are key issues and opportunities facing Palmdale today and in the future?

How can we help build community collaboration during the General Plan Update process?

Small Group Discussions



Introduce Yourself!



Facilitated Small Group Discussion



Report Back (Top 3 for each question)

Participation Principles

- Common conversational courtesies
- All ideas and points of view have value
- Speak up and share the time
- Cell phone courtesies



Report Back

As a group:

- 3 characteristics that make Palmdale unique and special
- 3 things that should be preserved or changed in the future
- 3 issues and opportunities that the City is facing
- 3 techniques/activities to build and/or enhance community collaboration

Individually:

- Write your detailed responses to ALL questions and hand those to your facilitator.

Upcoming Events

Pop up Workshops

Saturday, September 14th

AV International Multicultural Festival
Poncitlan Square

Saturday, October 12th

Kaleidoscope Music & Arts Festival
The Palmdale Amphitheater

Wednesday, September 25th

National Women's Health & Fitness Day
Domenic Massari Park

Saturday, November 2nd

AHA, Antelope Valley Heartwalk
Pelona Vista Park

Reminder – Take the Survey!

- Survey open until **August 31, 2019**





THANK YOU!

Visit the project website

Palmdale2045.org

Questions? Email the project team

generalplan@cityofpalmdale.org



Envision
PALMDALE 2045

General Plan Workshop #1

August 24, 2019 9:30 – 11:30 am | August 27, 2019 6:30 – 8:30 pm