

Envision PALMDALE 2045

What is Palmdale 2045?

Palmdale 2045 is the ongoing General Plan Update process. The General Plan serves as the City's primary guide for land use and development decisions and is a key tool for influencing and improving the quality of life for residents and businesses. As such, it serves as the "blueprint" for future development and conservation of a community. The General Plan will help the City plan for important community issues such as new growth, housing needs and environmental protection and sets the stage for future social, physical and economic development of the City. It addresses issues that impact the entire City, such as how land is used, where buildings are constructed, and the locations of roads and parks. Now is the time to look forward to the next several decades and chart a course for the City's future, including:

- Creating a vision for growth and development and improving the overall identity and quality of life in Palmdale;
- Ensuring equitable distribution of services, goods and amenities in the City;
- Capitalizing on major infrastructure investments such as High-Speed Rail and the Airport;
- Addressing transportation challenges such as traffic congestion, the bicycle network and public transit;
- Planning for natural emergencies including earthquakes and wildfires;
- Increasing opportunities for the location of parks and open space areas; and,
- Expanding opportunities for the City to pursue grants and other funding sources for parks and infrastructure improvements.

What's New?

DISCOVERY + VISIONING

A lot has happened since *Palmdale 2045* kicked-off in early 2019! The City of Palmdale held a series of events to hear from the community about the major issues and opportunities facing Palmdale, and to develop the long-term vision and guiding principles to steer *Palmdale 2045*. These events included an online community survey, General Plan Advisory Committee (GPAC) meetings, a workshop (held at two different locations), many pop-up events, stakeholder focus groups, and presentations to City Council and Planning Commission.

ALTERNATIVES

Based on community and GPAC feedback and direction, the General Plan Team has crafted three draft land use concepts for *Palmdale 2045*. These concepts or "alternatives" refer to different types of land uses (residential, commercial, industrial, etc.) and where they should be located in the City. Each of the three alternatives highlight "change areas," or areas that may transform significantly in the future like Downtown, the multi-modal transit center and land around Plant 42. The alternatives also consider "areas of stability," or areas that are expected to experience minimal change like the Antelope Valley Mall and existing residential neighborhoods.

The three land use alternatives consider different options for the change areas including the location of a future medical district and education district, different types of housing north and south of Palmdale Boulevard, and types of industrial job centers located around Plant 42. These draft land use alternatives will ultimately lead to a refined and updated General Plan Land Use Map.

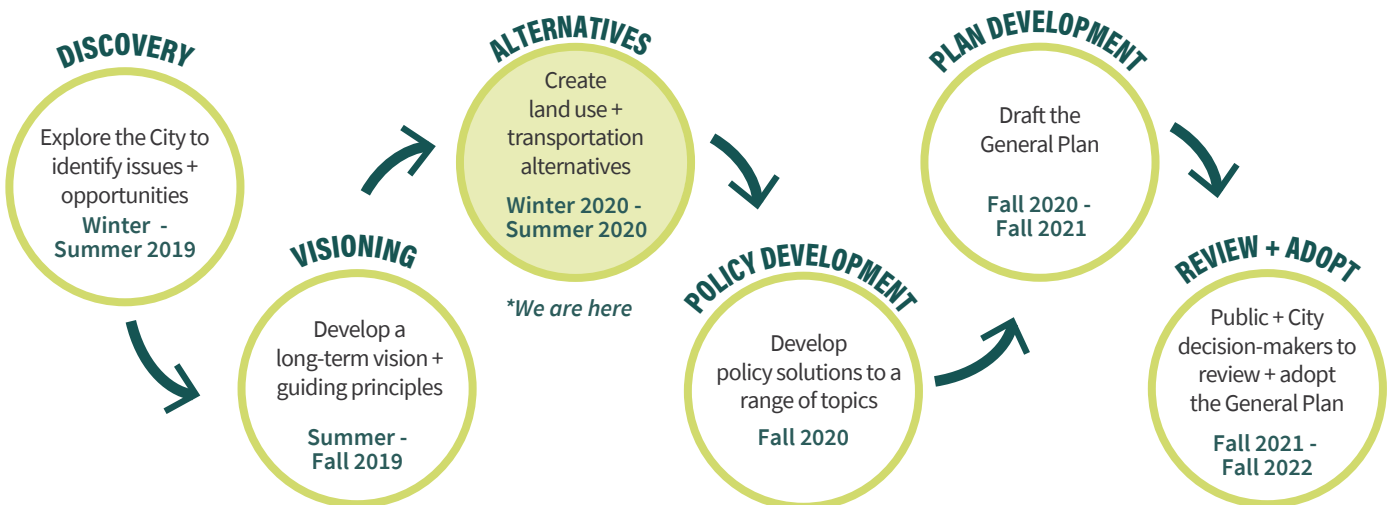


We Need Your Input!

In this next phase, we seek your feedback on three draft land use alternatives for future land use regulations in the City. Between mid-July and late-August 2020, the city will host a series of virtual events to hear from the public. These virtual events seek your input on how the General Plan Land Use Map will be updated. Your input will shape the future of Palmdale! Please visit the [Palmdale2045.org](https://www.palmdale2045.org) for regular updates and links to join each event.

Where are we in the process?

The General Plan update process will take approximately three years to complete, starting in Winter 2019 and ending in the Summer 2022. The major steps in the process are as follows:



What's Next?

Feedback on the three land use alternatives will direct the preferred land use alternative and how we begin to develop policies and solutions to address a range of issues related to housing, the local economy, transportation, public parks, and public health.

How do I find out more about the General Plan and stay informed?

- Visit the project website at [Palmdale2045.org](https://www.palmdale2045.org)
- Sign up for the email list on the project website
- Contact the City's project manager, Carlene Saxton, Deputy Community Development Director, at generalplan@cityofpalmdale.org