



Envision
PALMDALE 2045

GPAC Meeting #8

September 23, 2020

Agenda

- Welcome
- Staff introductions
- Roll call
- Pledge of Allegiance
- GPAC Meeting #7 Minutes approval
- Zoom Overview
- Overview of Regulatory Setting
- Existing Conditions Overview
- Community Feedback
- Policy Recommendations
- Group discussion



City Staff Introductions

- **Mike Behen**, Deputy City Manager and Acting Director of Economic & Community Development
- **Carlene Saxton**, Deputy Director of Economic & Community Development
- **Megan Taggart**, Senior Planner
- **Benjamin Fiss**, Senior Planner

Roll Call – GPAC Members

- **Tony Avila**
- **Juan Blanco**
- **Lourdes T. Everett**
- **Colby Estes**
- **Laura Gordon**
- **Theresa Hambro**
- **Matthew Harris**
- **Aurora Hernandez**
- **Pat Hunt**
- **Sheri Kaneshiro**
- **Teri Lamping**
- **Joe Parisio**
- **Deborah Rutkowski-Hines**
- **Jason Zink**

Pledge of Allegiance

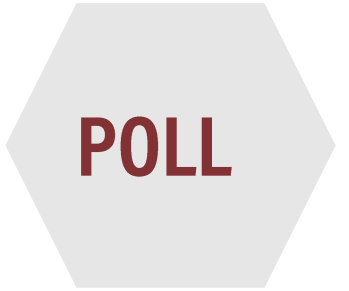


*I pledge allegiance
to the flag of the
United States of
America*

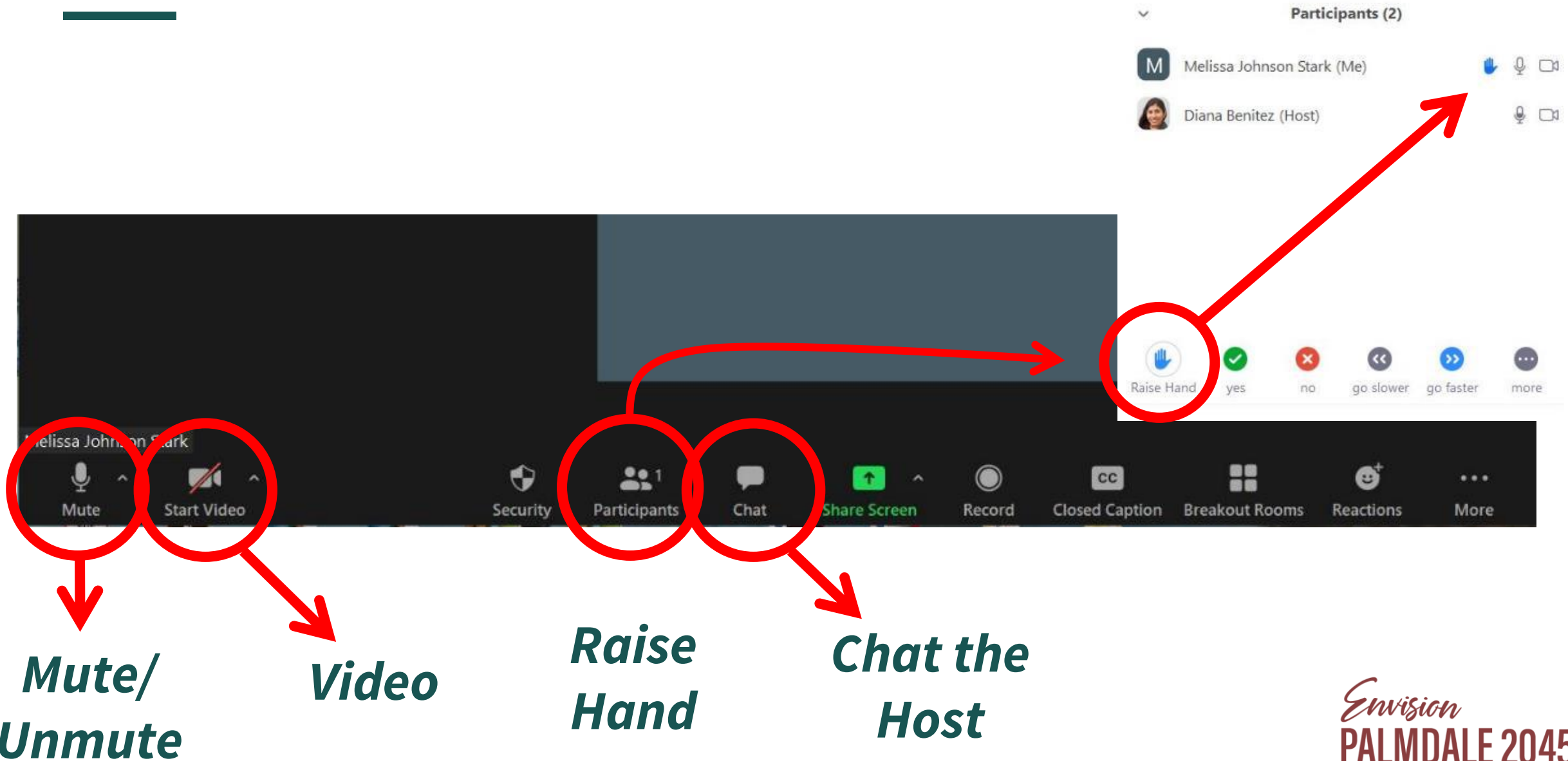
*and to the Republic
for which it stands,
one Nation under
God, indivisible,
with liberty and
justice for all.*

GPAC Meeting #7 Minutes

- Motion to approve or deny?



Zoom - What You Need to Know



**Mute/
Unmute**

Video

**Raise
Hand**

**Chat the
Host**

What You Need to Know: Questions and Comments

Questions and Comments

- We will be pausing during the presentation to answer any questions and ask you to participate in polls
- There will be additional opportunity after the presentation to provide comments
- Viewers are invited to submit comments and questions through the forum linked in the YouTube livestream

The background image shows a residential landscape with a stone wall, yucca plants, and houses in the distance. The entire image is covered with a dark teal semi-transparent overlay. The text 'Where We Are' is centered in white, with a short white horizontal line below it.

Where We Are

Palmdale 2045 Project Schedule



COMMUNITY ENGAGEMENT

Summary of Phase 2 Engagement

- **Stakeholder Focus Groups (July 2020)**
 - 47 attendees
- **Live Presentation + Q&A (August 2020)**
 - 42 live participants, 77 YouTube views
- **Virtual Workshop + Survey (July-August 2020)**
 - 418 responses, >3,100 views
- **Pop-Up Workshops (July-August 2020)**
 - 9 events, 297 participants
- **GPAC Meetings (Ongoing)**
 - 8 meetings to date, 15 members
 - GPAC Meeting #7 - 73 YouTube views
 - GPAC Meeting #6 - 177 YouTube views



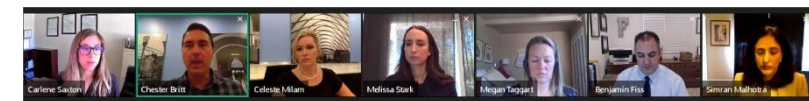
City of Palmdale General Plan Update: Virtual Workshop + Survey of Land Use Alternatives

Welcome Project Background Land Use Alternatives **Alternative #1** Alternative #2 Alternative #3 Compare the Alternatives Survey

Alternative #1

Alternative #1 focuses more activity and energy towards the City core, with a major medical and educational hub on 10th Street West and moderate-high residential developments allowed close to downtown. Major components of Alternative #1 are:

- A large education district with higher education facilities at 10th Street West between Technology Drive and Avenue Q/Elizabeth Lake Road;
- An additional medical district on Avenue S between 40th Street East and 47th Street East;
- Regional commercial uses at the Palmdale Boulevard and 47th Street East intersection; higher density residential expanded around the future downtown between Avenue Q and Avenue R;
- Neighborhood centers throughout the City that provide a mix of neighborhood retail or commercial uses surrounded by townhomes and courtyard apartments; and



Envision PALMDALE 2045 embrace community

Thank you for joining us! The presentation will begin shortly.

Para escuchar la presentación en español, llame al 1-866-899-4679, código de acceso 593-934-637.

Connecting to Audio:

- Please make sure you connect to audio through your computer or by calling in by phone. To connect by phone, please call 1-877-309-2074, enter the Access Code 940-773-954, and then enter your unique Audio PIN which will appear on your screen.
- If you are having audio issues, please try the following: On the right hand panel of your screen, under the Audio Tab, select to use either your computer audio or join via phone call. For phone call, dial the Access Code 940-773-954 and Audio PIN on the right hand panel of your screen.

Please note that the audience will be automatically muted during the presentation.

If you have not already, please use this time to take our survey on the project website, Palmdale2045.org.

Overall Feedback on Alternatives

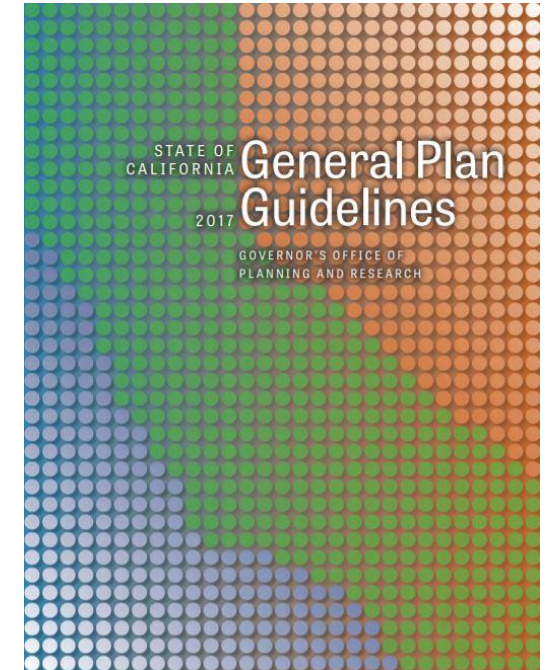
- **Overall preference for Alternative 3**
 - Mix of employment uses, # of jobs
 - Low VMT, less travel is better for families and youth
 - Alternative 3 offers most flexibility
 - Opportunity to make Palmdale vibrant – “place to call home”
 - Plan should give youth a choice to stay in Palmdale (education, jobs, housing choices)
 - Diversification of the local economy is important, with Aerospace serving as the backbone
- **Medical Districts** – like the idea of two locations for better accessibility by residents
- **Education Districts** – prefer two locations, vocational training as well as higher education



Palmdale 2045 Requirements

General Plan Requirements

- Land use element
- Circulation element
- Housing element
- **Conservation element** addresses the conservation, development, and use of natural and historic resources including water, forests, soils, rivers, and mineral deposits.
- **Open-space element** details plans and measures for preserving open-space for natural resources, the managed production of resources, outdoor recreation, public health and safety, and the identification of agricultural land.
- Noise element
- Safety element



Regulatory Framework

State and Federal Requirements

- **Federal Endangered Species Act (ESA, 1973)**
 - Designations from endangered and threatened species
 - Incentives for states to develop and maintain conservation programs
- **California Endangered Species Act (CESA, 1970)**
 - Designations for endangered and threatened species
 - Bans imports/exports of animals listed
 - CEQA typically drives the CESA process, significant impacts to listed species
- **West Mojave Habitat Conservation Plan (2003)**
 - Strategy to conserve over 100 plants, animals, and sensitive communities
 - Encompasses 9.4 million acres, both private and public land
 - Provides streamlined program for complying with Endangered Species Acts

Existing Conditions

Parks, Open Space, and Trails



Parks

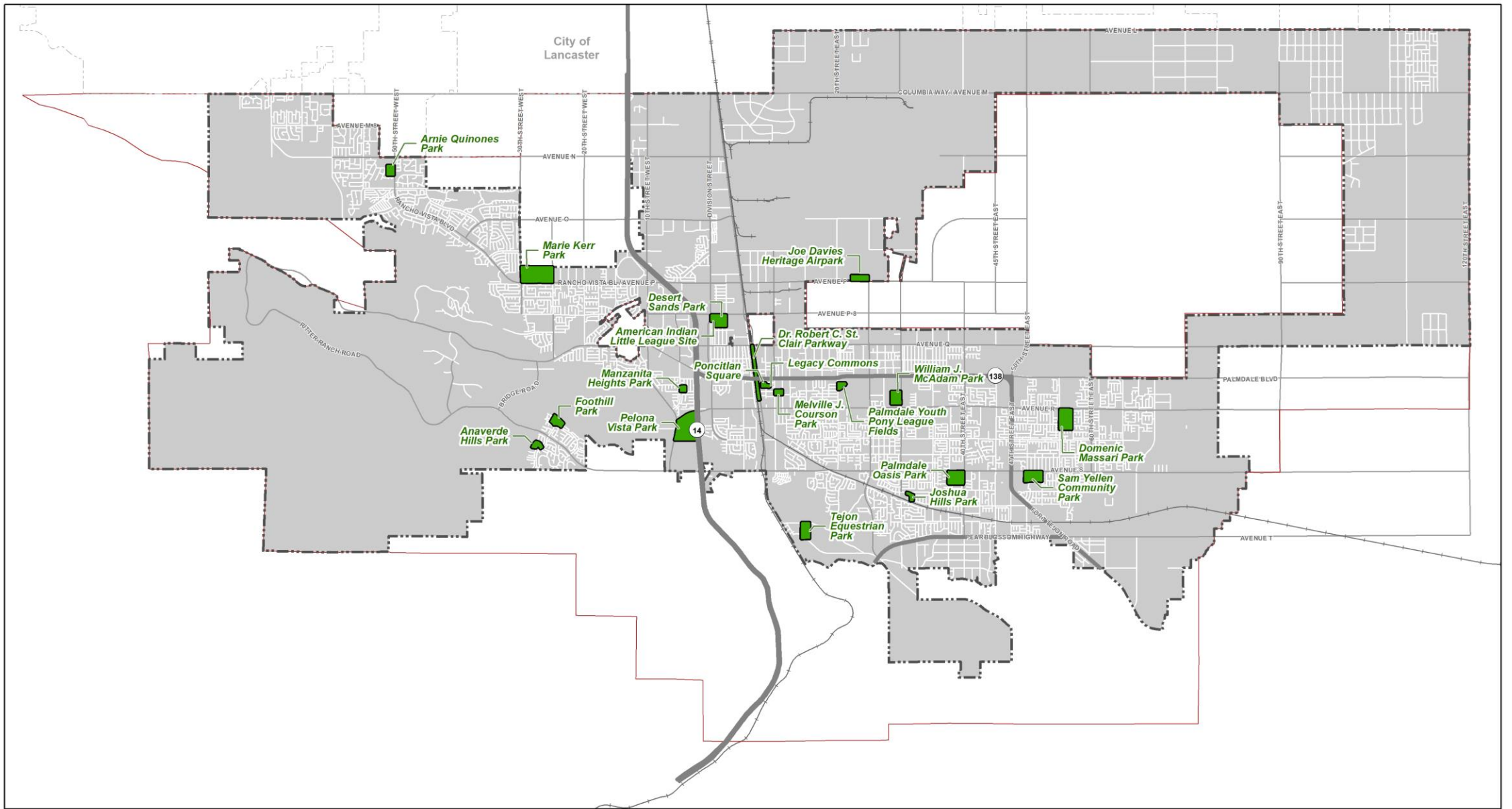
- Palmdale has **20 parks**, totaling **365 acres**
- Variety of amenities
 - Playgrounds, sports fields, skatepark, water park, multiple public pools, amphitheater, airpark
- Established standard of **5 acres of parkland per 1,000 residents**
- City is interested in acquiring more open space land
 - 2019 CIP includes 76 acres of new neighborhood parks

Park/Facility	Size	Overall Condition
American Indian Little League Fields	5 acres	Fair
Anaverde Hills Park	6 acres	Good
Arnie Quinones Park	10 acres	Fair
Domenic Massari Park	37 acres	Fair
Desert Sands Park	20 acres	Fair
Dr. Robert C. St. Claire Parkway	8 acres	--
Foothill Park	12 acres	Good
Joe Davies Heritage Airpark	25 acres	Good
Joshua Hills Park	4 acres	Fair
Legacy Commons Park	1 acre	Good
Manzanita Heights Park	4 acres	Fair
Marie Kerr Park	77 acres	Fair
William J. McAdam Park	19 acres	Fair
Melville J. Courson Park	5 acres	Fair
Palmdale Oasis Park	29 acres	Good
Palmdale Youth Pony League Fields	5 acres	Fair
Pelona Vista Park	76 acres	Fair
Poncitlan Park	2 acres	Fair
Sam Yellen Community Park	25 acres	Good
Tejon Equestrian Park	20 acres	Fair
Total	365 acres	

Notes: -- = Data not Available

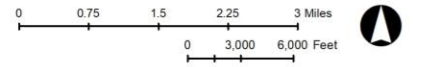
Source: Los Angeles County. 2011. Los Angeles Countywide Comprehensive Park & Recreation Needs Assessment

Palmdale Parks



Palmdale Parks

- Park
- Major Highway/Arterial
- City of Palmdale Boundary
- Sphere of Influence
- Other City Boundary
- Railroad



Data Sources: City of Palmdale GIS data.

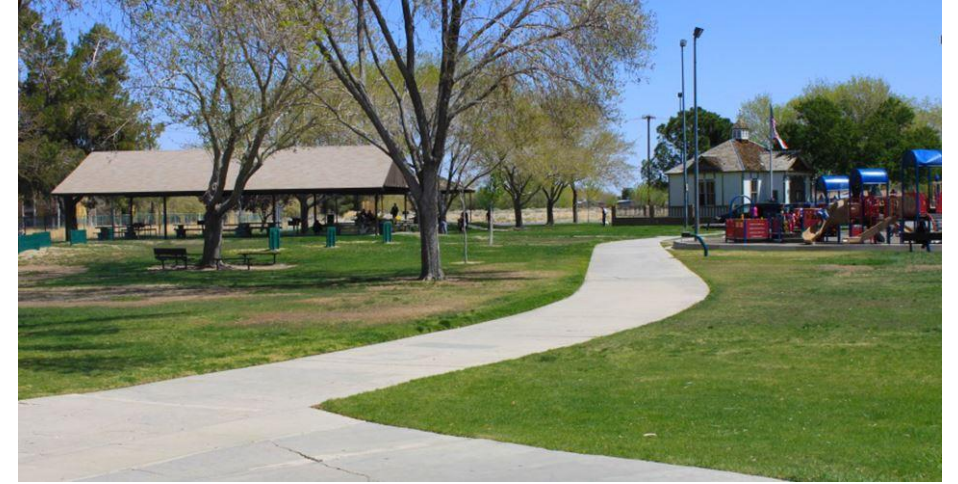
Produced by Rincon Consultants, Inc.
 September 2020

Types of Parks

Parks are not currently categorized

Typical park categories:

- **Neighborhood**
 - City-owned recreational facilities serving a residential neighborhood within a $\frac{1}{4}$ - $\frac{3}{4}$ mile radius
 - Generally up to 5 acres
- **Community**
 - Locally-owned large recreation facilities serving a population within a 1- to 2-mile radius
 - Generally 5 to 20 acres
- **Regional**
 - Designed to serve a broad area that generally includes several local government jurisdictions
 - Publicly-owned and maintained by a county, state, or a regional park district
 - Commonly feature both natural areas for passive recreation and active recreation facilities

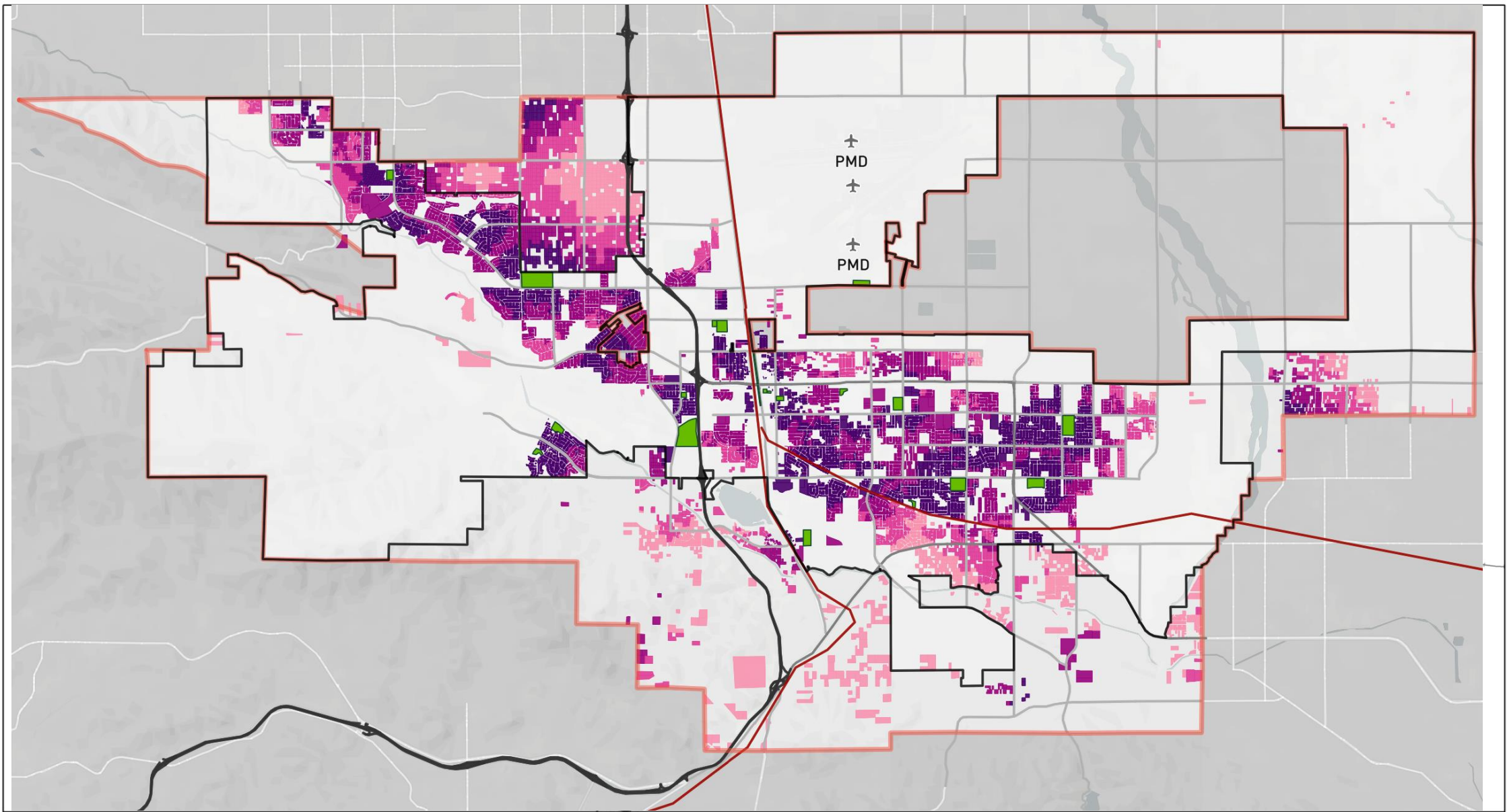


William J. McAdam Park (Could be categorized as a Neighborhood Park)

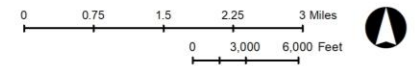


Domenic Massari Park (Could be categorized as a Community Park)

Parks Access Map

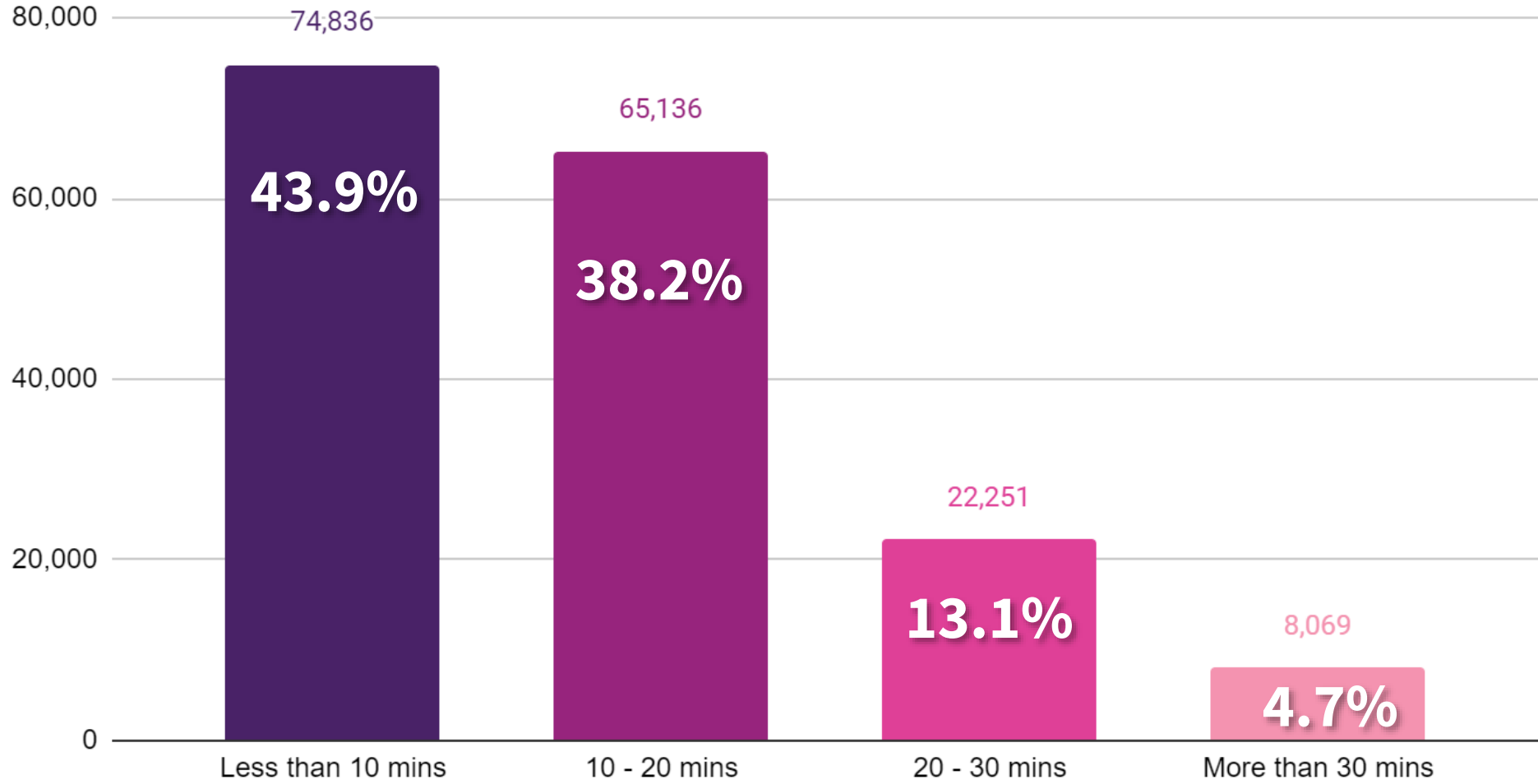


Walking Time to Nearest Park (minutes)



Data Source: City of Palmdale; Urban Footprint, 2020.

Population Access to Parks



Open Space and Scenic Highways

- **Undeveloped land with no buildings that is open to the public**
- **Hillside management ordinance:** allow for orderly and sensitive development while preserving open space
 - **Retain natural ridgelines and prominent landforms**
 - Ritter Ridge, Portal Ridge, Verde Ridge, Ana Verde Hills, the Sierra Pelona mountains, secondary ridges of the San Andreas Rift Zone, lower foothills of the San Gabriel mountains
- Angeles Crest Highway (Route 2), from the La Canada/Angeles National Forest boundary to the San Bernardino County Line, is the only officially designated scenic highway
 - Other City designated scenic highways include: Barrel Springs Road, Tierra Subida Avenue, Sierra Highway, Elizabeth Lake Road, Godde Hill Road, Bouquet Canyon Road

Trails

- Formal bike and pedestrian trails fairly limited within the densely populated parts of the city
- **Ritter Ridge and Joshua Ranch Loop (11-miles), Avenue S Bike Trail (1.5-miles), Barrel Springs Trail**
- Many informal trails in the city's foothills
- Palmdale Active Transportation Plan
 - Development of 117 miles of new multi-use trails



POLL

Questions?

Conservation

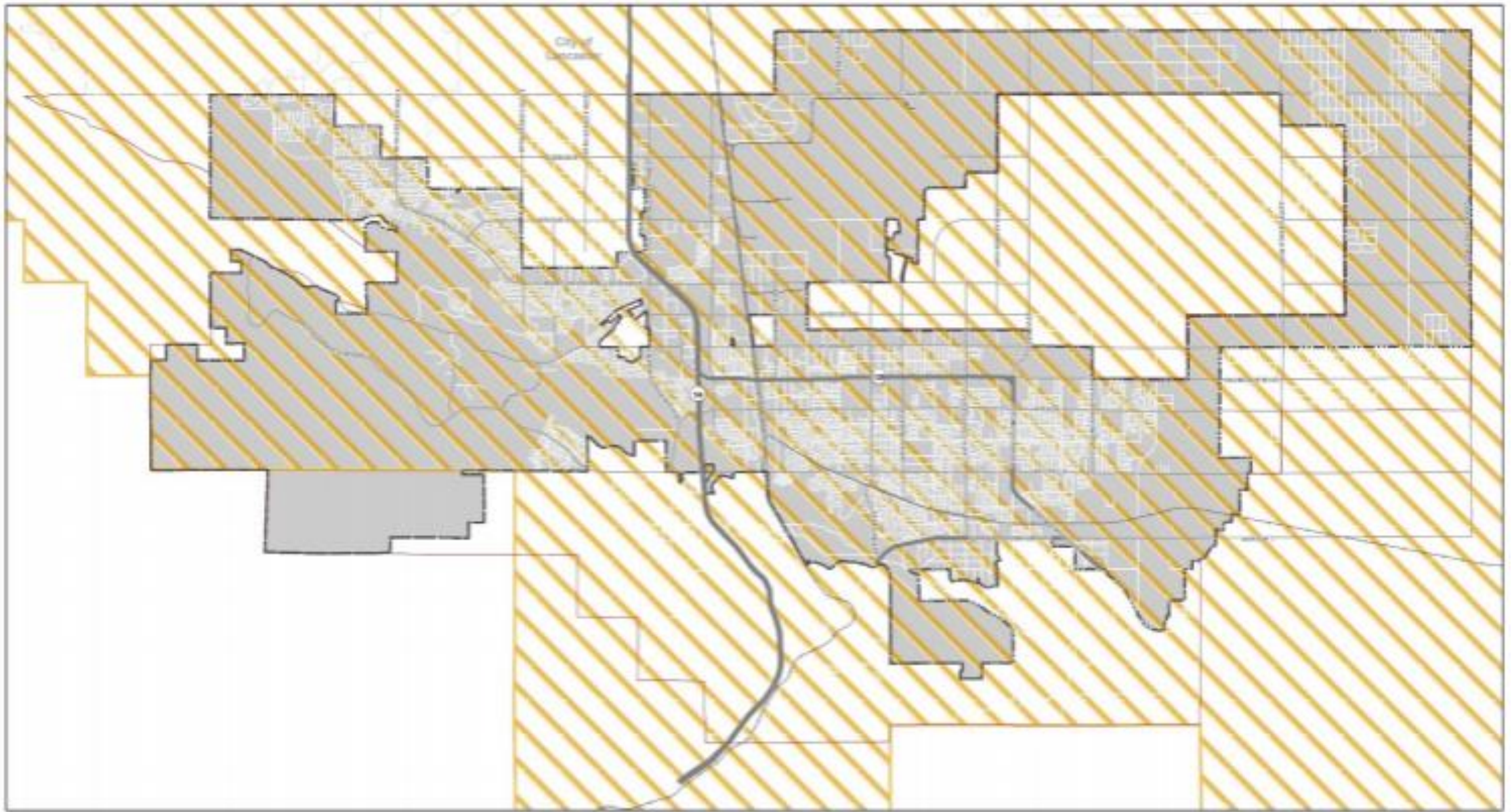


Protected Wildlife Species

- **Palmdale lies almost entirely in the West Mojave Habitat Conservation Plan area**
 - Strategy for protecting over 100 sensitive plants, animals, and natural communities
 - Streamlined program for ensuring compliance with State and Federal Endangered Species Acts
 - Ensure Biological Surveys are conducted in Palmdale's SEAs
- California Department of Fish and Wildlife works with agencies and organizations to **protect CESA listed species**
- Many protected species in Palmdale, including:
 - Bell's Sage Sparrow, Burrowing Owl, California Red-Legged Frog, Coast Horned Lizard

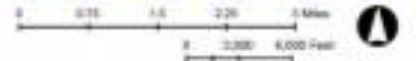


West Mojave Habitat Conservation Plan Area



Western Mojave Habitat Conservation Plan

- Western Mojave Habitat Conservation Plan
- City of Palmdale Boundary
- Sphere of Influence
- Other City Boundary
- Major Highway/Arterial
- Railroad



Data Source: City of Palmdale GIS data / Los Angeles County, 2018

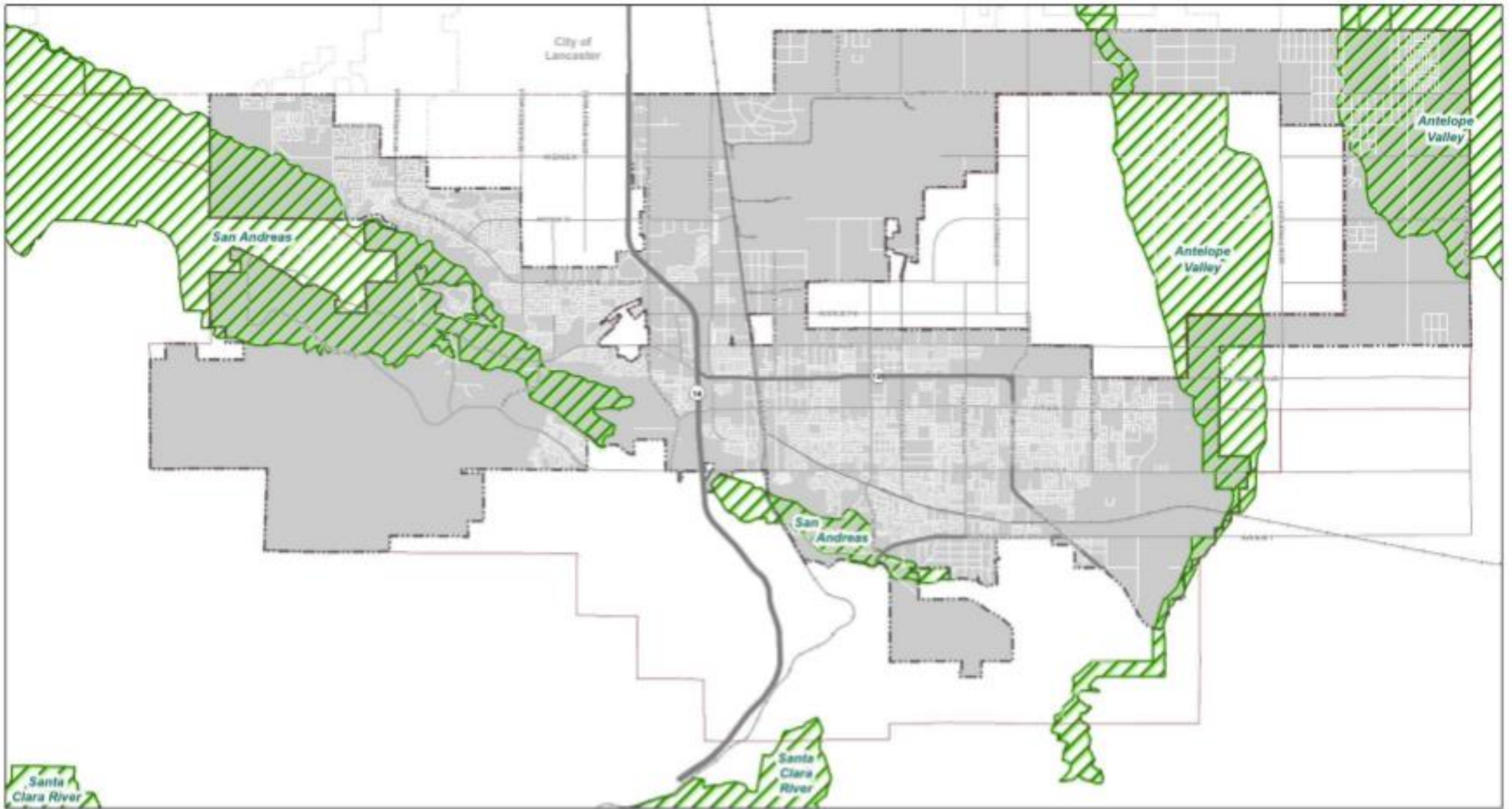
Prepared by Elser Consultants, Inc.
June 2018

Significant Ecological Areas

- 1993 Environmental Resources Element
 - Overlay map designating Significant Ecological Areas (SEA)
 - Biological surveys called for before new developments
 - Preserve environmental resources to the extent feasible
 - Promote only compatible/passive recreational uses
- Designated SEAs
 - Big Rock Wash, Littlerock Wash, Ritter Ridge, Portal Ridge, Alpine Butte

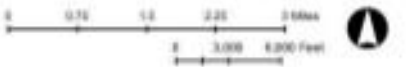


Sensitive Ecological Areas



Significant Ecological Areas

- Significant Ecological Area
- City of Palmdale Boundary
- Sphere of Influence
- Other City Boundary
- Major Highway/Arterial
- Railroad



Data Sources: City of Palmdale GIS data, Los Angeles County, 2018

Prepared by River Consultants, Inc.
June 2019

POLL

Questions?

Natural Resources

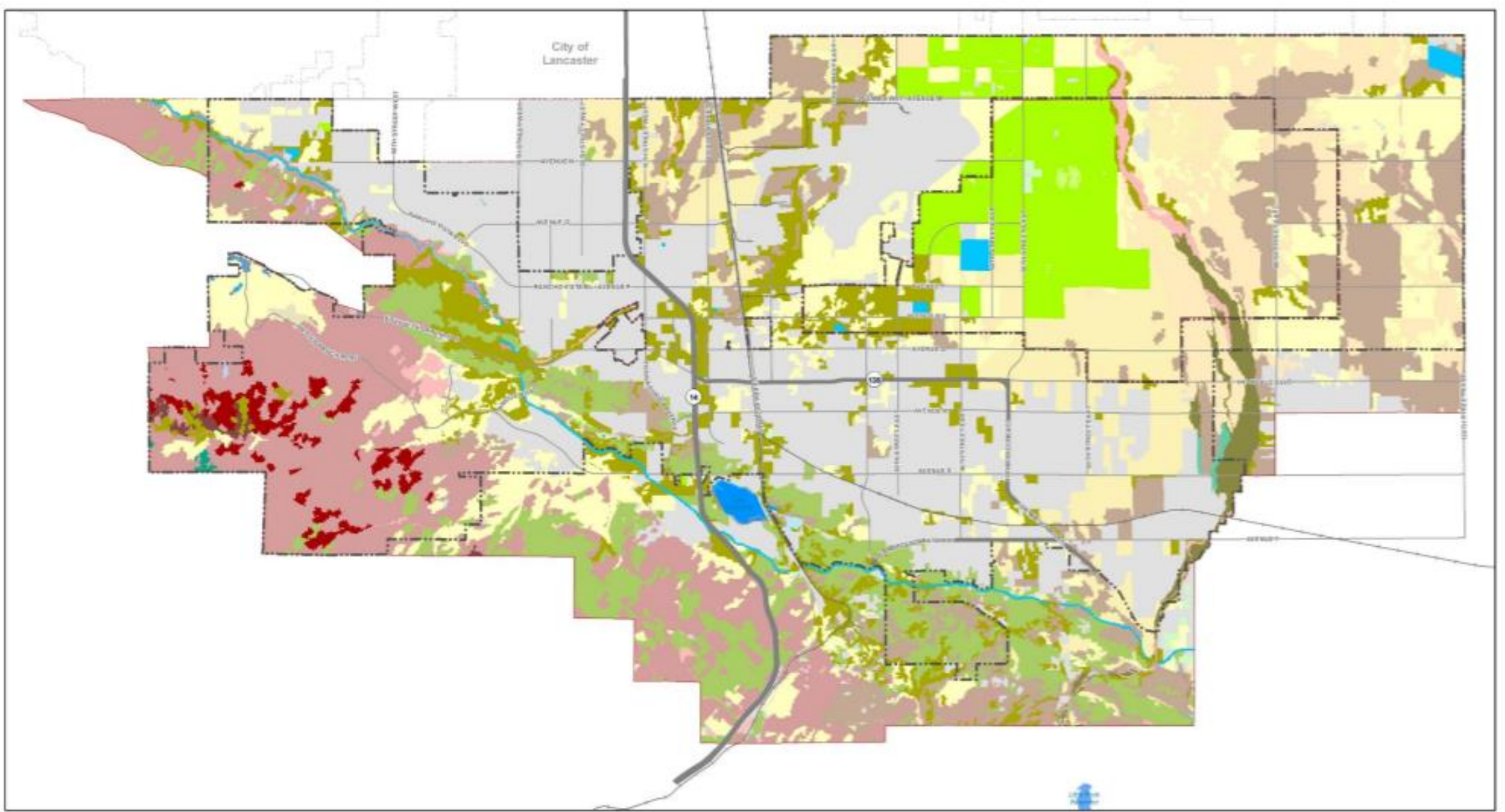


Natural Resources in Palmdale

- Wide variety of natural communities in and around Palmdale
 - Generally concentrated in the northeast and southwest of the City
 - Most common include annual grassland, mixed chaparral, desert scrub, and sagebrush
 - Home to protected plant and animal species, including Joshua trees and Junipers

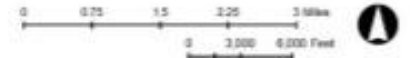
Natural Community and Biotic Habitat	Total Acres	Percentage
Annual Grassland	9,691	14.25%
Mixed Chaparral	8,042	11.82%
Desert Scrub	7,154	10.52%
Sagebrush	5,891	8.66%
Joshua Tree	4,351	6.40%
Alkali Desert Scrub	3,369	4.95%
Juniper	3,410	5.01%
Montane Hardwood	1,062	1.56%
Barren	536	0.79%
Desert Wash	442	0.65%
Lacustrine	323	0.48%
Montane Chaparral	174	0.26%
Desert Riparian	75	0.11%
Bitterbrush	51	0.07%
Chamise-Redshank Chaparral	45	0.07%
Montane Riparian	44	0.06%
Saline Emergent Wetland	40	0.06%
Valley Foothill Riparian	29	0.04%
Fresh Emergent Wetland	18	0.03%
Coastal Scrub	4	0.01%
Coastal Oak Woodland	3	<0.01%
Agricultural	1,621	2.38%
Urban	21,644	31.82%
Total	68,021	100.00%

Natural Communities



Natural Communities

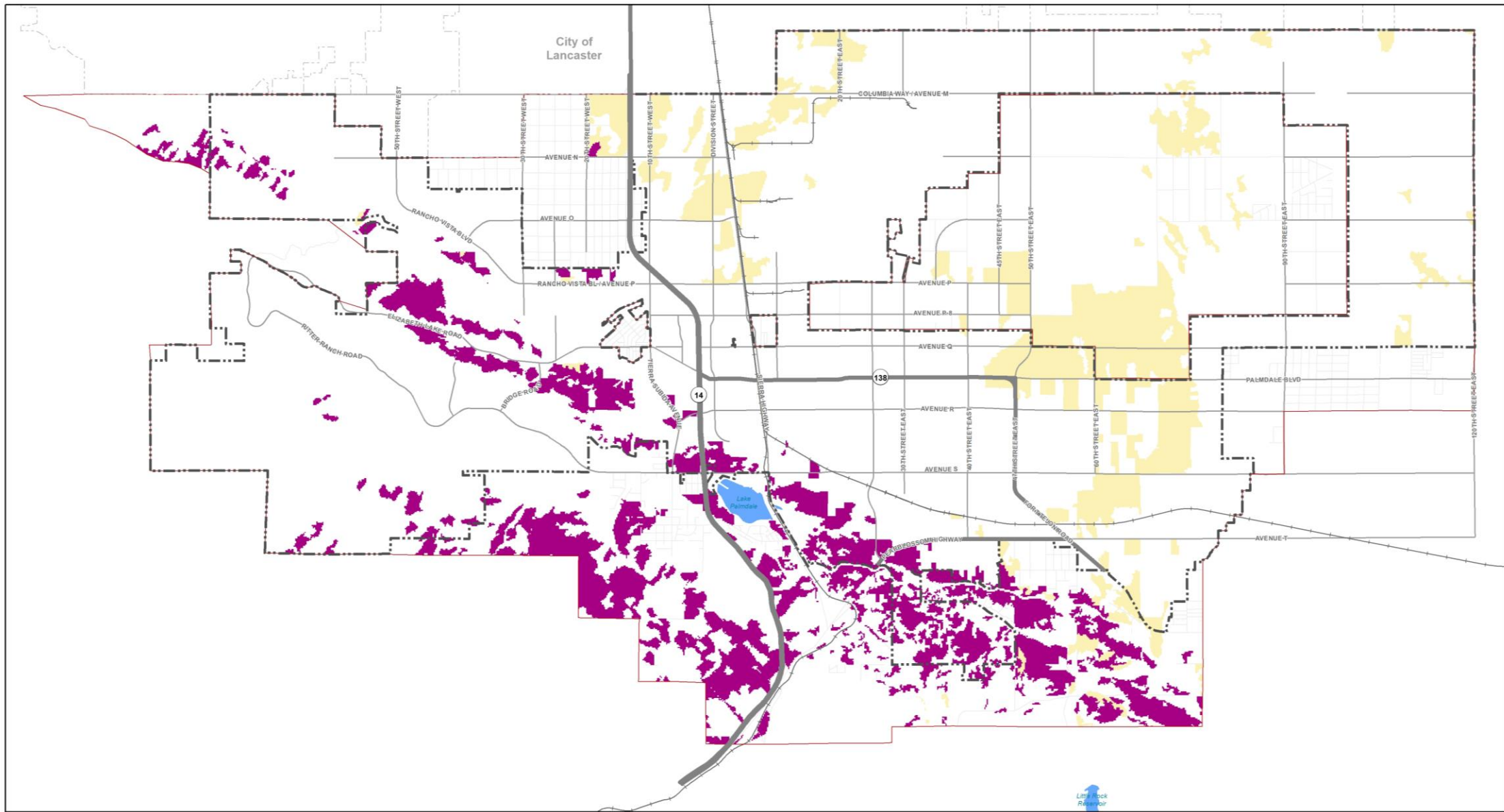
<ul style="list-style-type: none"> Major Highway/Arterial City Limits City Boundary Sphere of Influence Railroad Arterials Water Body 	<p>Natural Community Name</p> <ul style="list-style-type: none"> Alkali Desert Scrub (6,606.43 ac) Annual Grassland (14,883.09 ac) Barren (1,027.03 ac) Bitterbrush (97.14 ac) Chamise-Redshank Chaparral (44.81 ac) 	<ul style="list-style-type: none"> Coastal Oak Woodland (2.67 ac) Coastal Scrub (3.78 ac) Deciduous Orchard (150.31 ac) Desert Riparian (161.90 ac) Desert Scrub (12,680.99 ac) Desert Wash (1,184.13 ac) 	<ul style="list-style-type: none"> Dryland Grain Crops (4.00 ac) Fresh Emergent Wetland (32.25 ac) Inigated Hayfield (120.54 ac) Inigated Row and Field Crops (6,232.38 ac) Joshua Tree (7,881.91 ac) Juniper (8,400.17 ac) 	<ul style="list-style-type: none"> Lacustrine (1,034.13 ac) Mixed Chaparral (13,156.03 ac) Montane Chaparral (185.63 ac) Montane Hardwood (1,062.21 ac) Montane Riparian (45.86 ac) Pasture (77.01 ac) 	<ul style="list-style-type: none"> Sagebrush (8,602.64 ac) Saline Emergent Wetland (40.03 ac) Urban (28,510.64 ac) Valley Foothill Riparian (48.84 ac)
--	--	---	---	--	--



Data Source: City of Palmdale GIS data; CALFIRE, 2015.

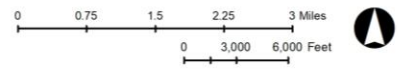
Prepared by Rincon Consultants, Inc.
June 2019

Joshua + Juniper Trees



Joshua Tree & Juniper Habitat

- Joshua Tree Habitat (7,881.91 ac)
- Juniper (8,400.17 ac)
- City Limits
- City Boundary
- Sphere of Influence
- Major Highway/Arterial
- Railroad
- Arterials
- Water Body



Data Sources: City of Palmdale GIS data; CALFIRE, 2015.

Produced by Rincon Consultants, Inc.
September 2020

Joshua Trees and Junipers in Palmdale

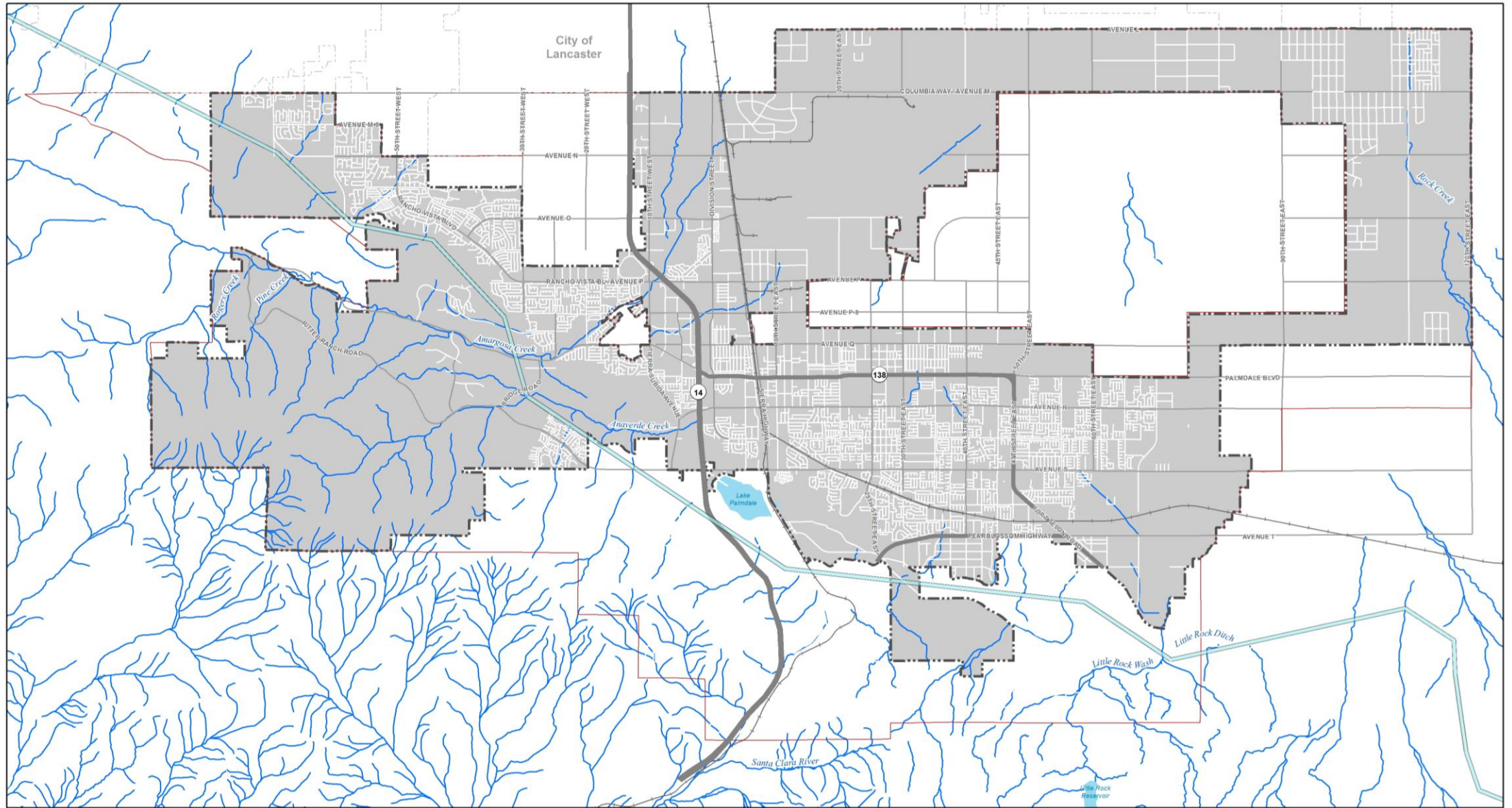
- **Joshua tree and Juniper communities**
 - Open woodlands with scattered trees and sparse groundcover of shrubs
- Joshua trees common in eastern Palmdale, Junipers mainly in the Anaverde Valley to the southwest
- **Palmdale Native Desert Vegetation Ordinance**
 - Desert vegetation preservation plan with tree location map
 - Removal not permitted except as defined by preservation criteria, two Joshua trees/junipers per gross acre
 - Maintenance requirements for projects
- **California Fish and Game Commission Protection Hearings**
 - Joshua Tree may be added as a listed species under the California Endangered Species Act



Water, Mineral, and Agriculture Resources

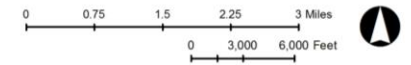
- **Three seasonal streams**
 - Anaverde Creek, Amargosa Creek, Littlerock Wash
 - Water from the San Gabriel Mountains, reservoirs, and the occasional local rainstorm
- **Shallow flooding common in the floor of the Antelope Valley**
- **Palmdale lies within the Palmdale Production-Consumption region**
 - 60 percent sand/silt, 40% pebbly gravel
 - Considered “regionally significant” by the California Department of Conservation, discourages encroachment of incompatible land uses that could threaten the long-term viability of mining and processing
- Palmdale contains agricultural lands in northeast of airport
 - Some agricultural land to the north and east of the Palmdale Regional Airport, most under Los Angeles County jurisdiction

Streams + Water Bodies



Streams and Water Bodies

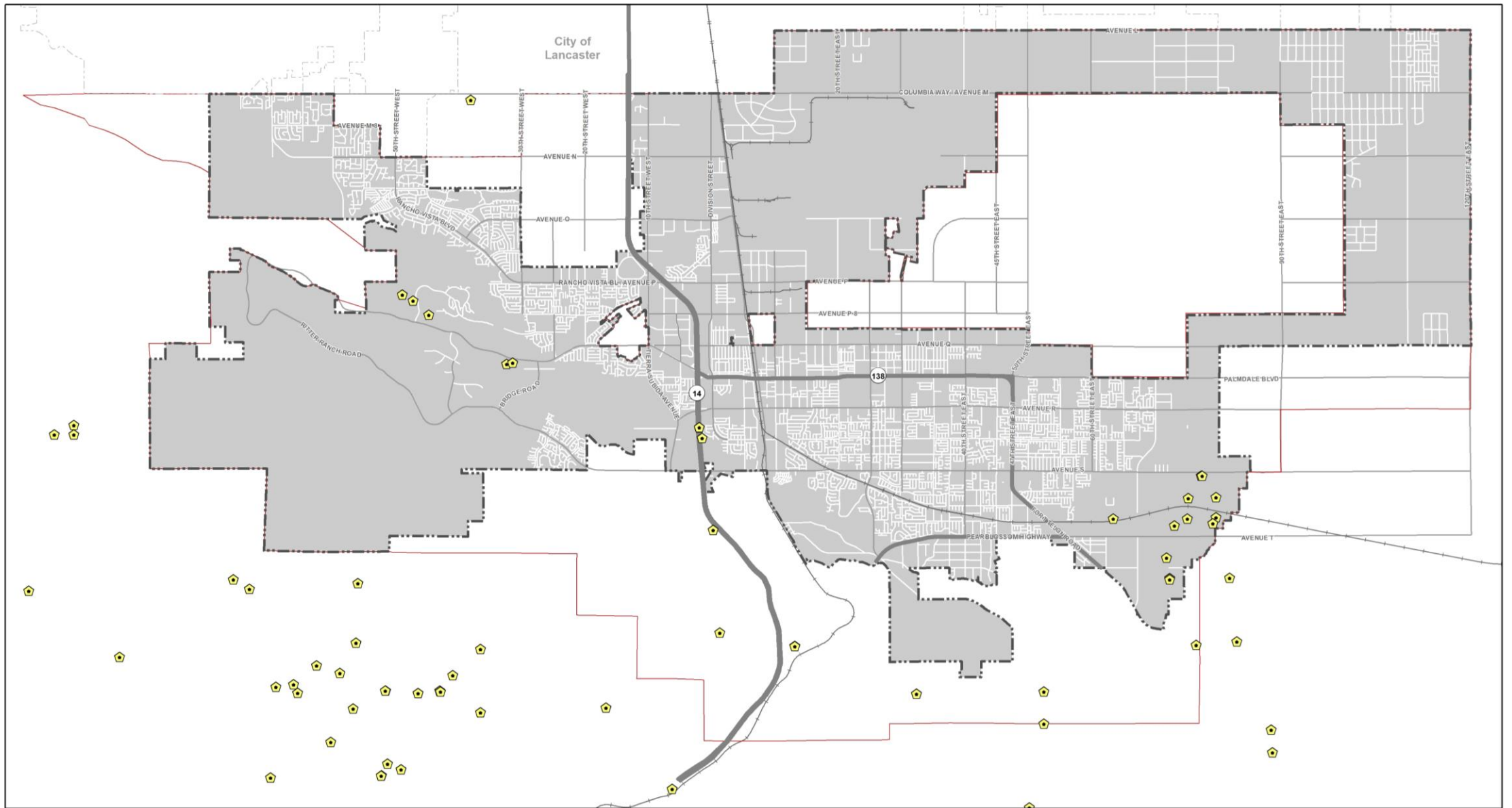
- Water Body
- California Aquaduct
- Stream
- City of Palmdale Boundary
- Sphere of Influence
- Other City Boundary
- Major Highway/Arterial
- Railroad





Data Sources: City of Palmdale GIS data.; USGS, 2018.

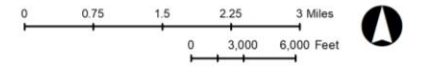
Produced by Rincon Consultants, Inc.
June 2019

Mineral Resources



Mineral Resources

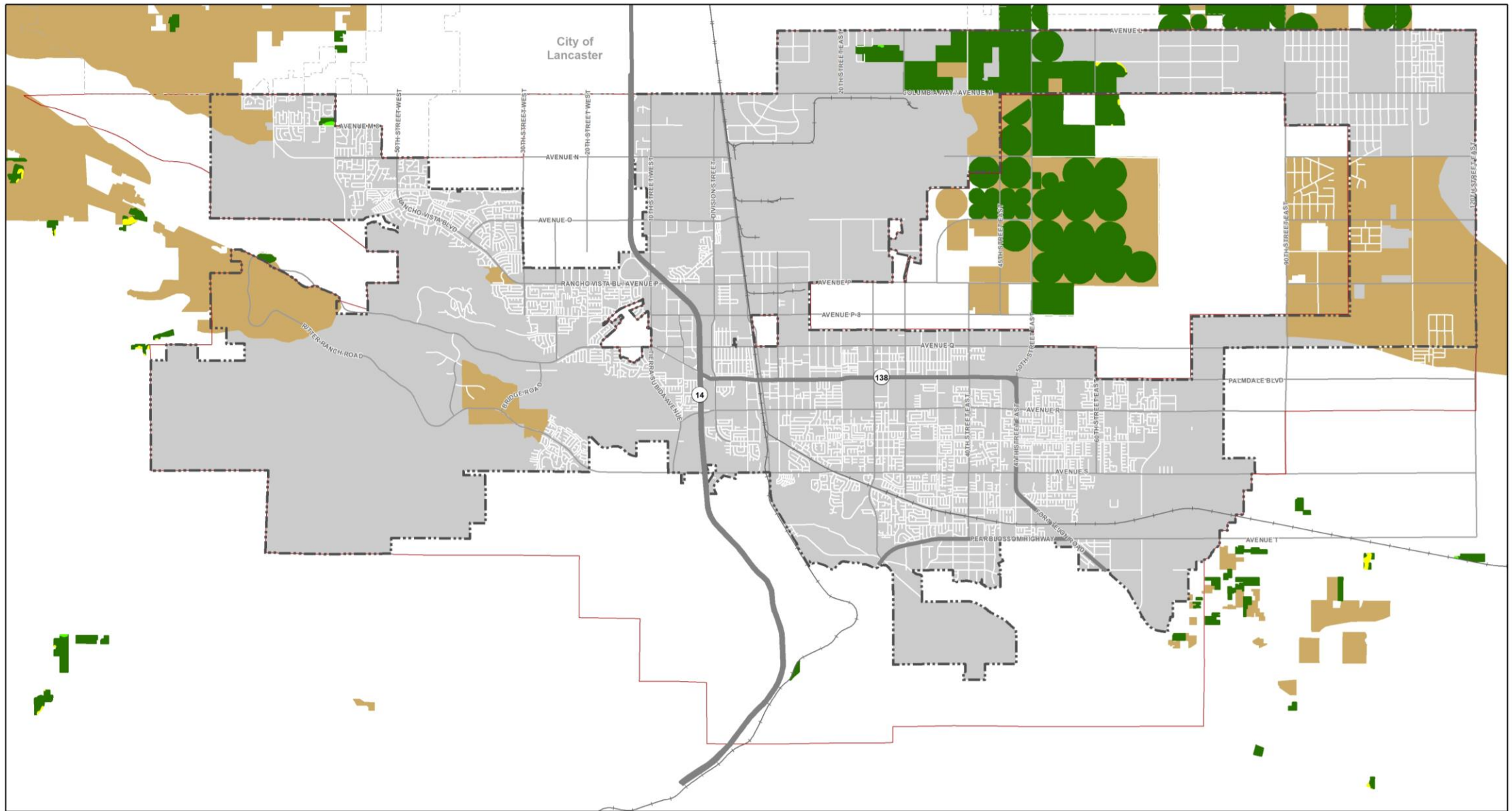
-  Mineral Resource Location
-  Major Highway/Arterial
-  City of Palmdale Boundary
-  Railroad
-  Sphere of Influence
-  Other City Boundary



Data Sources: City of Palmdale GIS data; USGS.

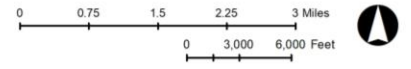
Produced by Rincon Consultants, Inc.
September 2020

Farmland



Farmland

- Prime Farmland
- Farmland of Statewide Importance
- Unique Farmland
- Grazing Land
- City of Palmdale Boundary
- Sphere of Influence
- Other City Boundary
- Major Highway/Arterial
- Railroad



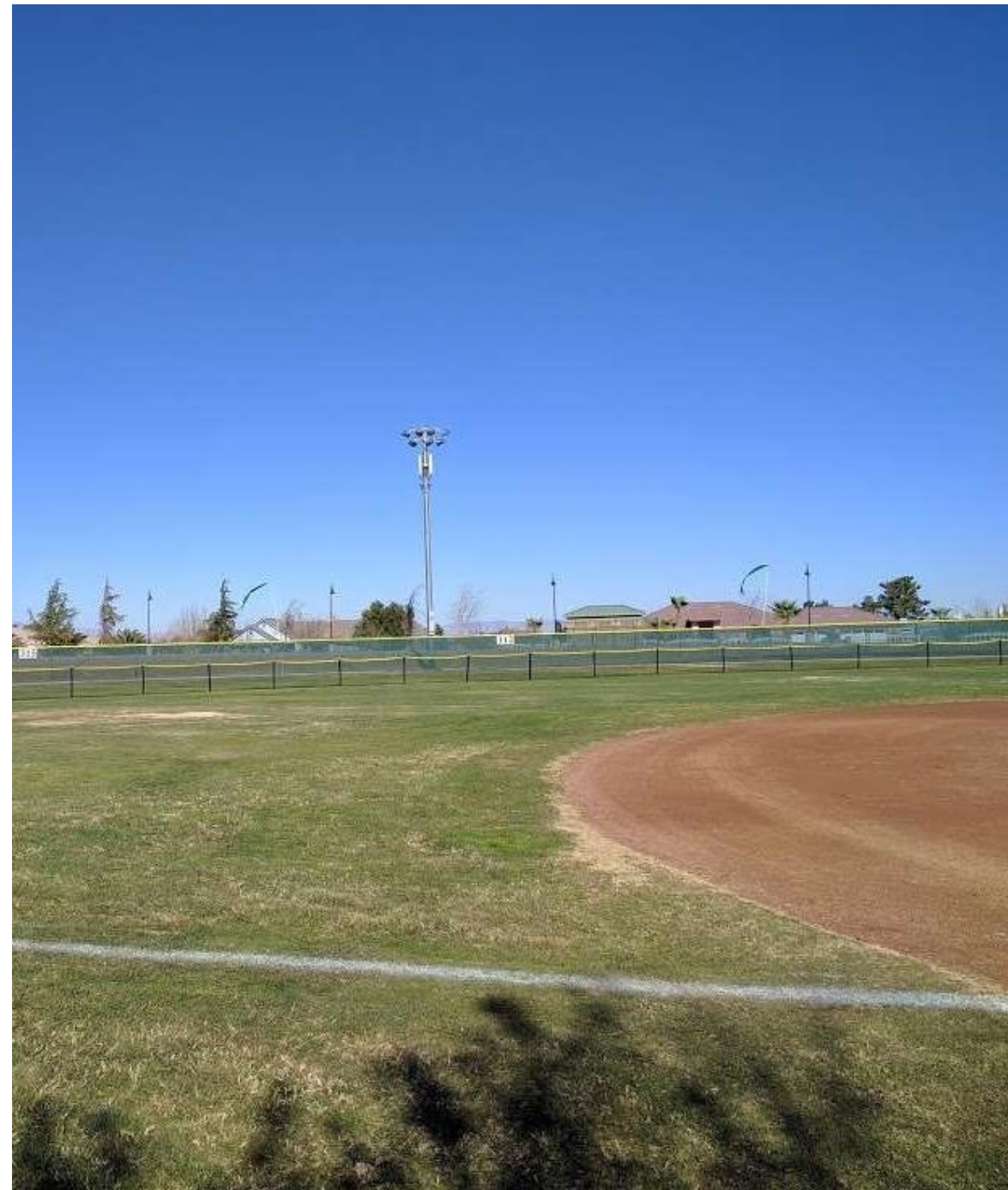
Data Sources: City of Palmdale GIS data;
California Department of Conservation.

Produced by Rincon Consultants, Inc.
September 2020



Questions?

Existing Programs and Policies in Palmdale



Existing Programs & Policies in Palmdale

- **Native Desert Vegetation Ordinance**

- Designed to protect Joshua Trees and California Juniper, requires a desert vegetation preservation plan for any proposed development containing native desert vegetation

- **1993 General Plan Policies**

- Promote only compatible, and where appropriate, passive recreational uses in natural areas determined to be ecologically significant, consistent with each SEA (Policy ER 2.1.2)
- Implement the standards adopted under the City's Hillside Management Ordinance for new development including clustering and density transfer of housing units (Policy ER 1.1.4)
- Integrate natural hazard areas, such as floodways, seismic fault zones, and unstable soils, into the open space network in order to ensure public health, safety and welfare while preserving open space (Policy ER 1.1.6)
- Cooperating with private and public entities whose goals are to preserve natural and man-made open space (Policy ER 1.1.8).
- Develop criteria and guidelines to identify how to establish land trust open space locations (Policy ER 1.1.8)
- Equitably located and varied parks to meet all residents (Policy PRT 1.1.2, PRT 1.1.3)
- Increasing access points to open space (Policy PRT 3.1.2)

Community Insights

- More open spaces that incentivize walking and biking
- More trails and bike paths connecting open space
- More neighborhood parks and recreational opportunities in heavily populated areas
- Designate an area to preserve Joshua Trees
- Maintain natural desert landscape
- Consider developing a community garden
- Bird conservation recovery program - AV Audubon



Policies + Programs for Discussion



Recommended Policies & Programs

- Consider establishing an urban uses boundary that protects and enhances open space
- Consider developing a coordinated biological preserve system that includes
 - Pre-Approved Mitigation Areas, Biological Resource Core Areas, wildlife corridors, and linkages to allow wildlife to travel throughout their habitat ranges.
 - Avoid adverse impacts to wildlife movement corridors and nursery sites (e.g., nest sites, dens, spawning areas).

Recommended Policies & Programs

- Consider development incentives for protection areas or new parks
 - Transfer of Development Rights (TDR)
- Develop new parks in Palmdale to increase equity and access
- Consider new funding opportunities for building new and maintaining current Palmdale Parks
- Promote bicycle and pedestrian connections throughout Palmdale

A dark teal overlay on a photograph of a desert landscape. In the background, a sign with the word 'PALM' is visible. The scene includes desert plants, a paved road, and distant hills.

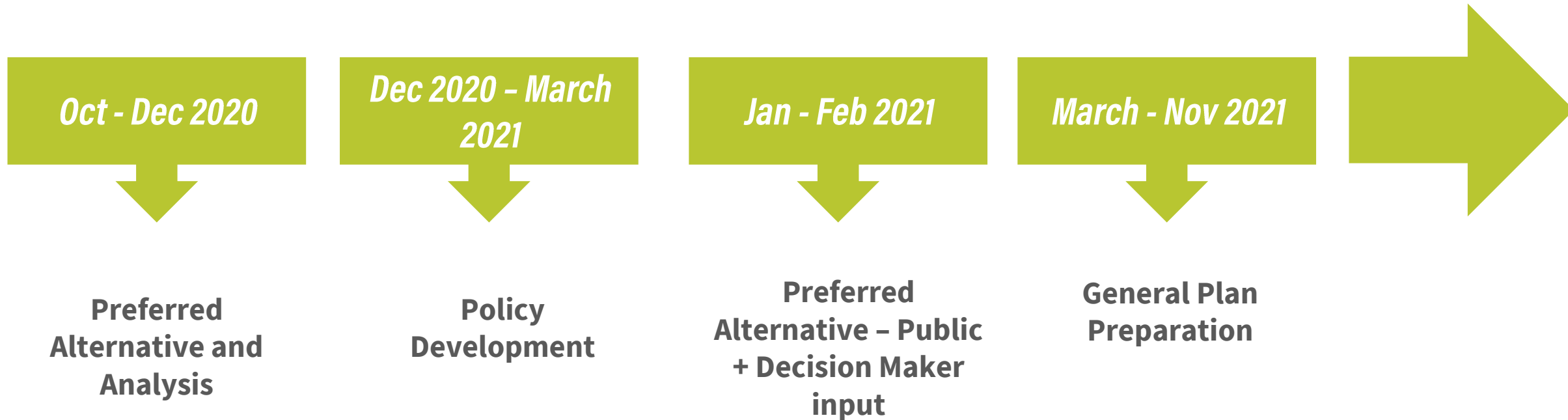
Discussion



Discussion Questions

- What are the most pressing issues regarding open space, natural resources, and recreation in Palmdale today?
- Are there any particularly underserved areas of Palmdale when it comes to current parks and recreation facilities?
- How should the City balance tradeoffs between natural resource protection and economic development?

Upcoming Events and Next Steps



Thank you!

City of Palmdale

Carlene Saxton, *Deputy Director of Economic and
Community Development*

Phone

661-267-5200

Email

generalplan@palmdale2045.org