

Envision
PALMDALE 2045

Policy Framework Series Presentation

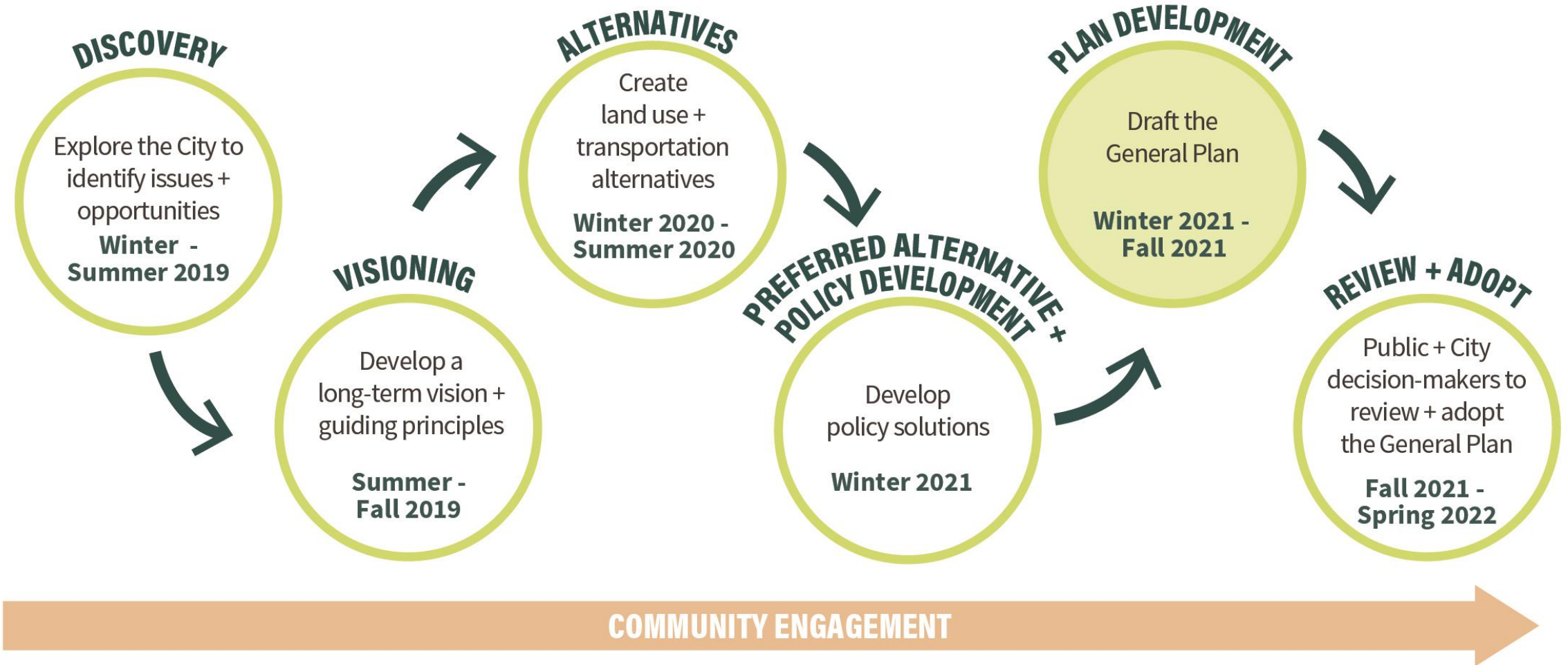
Planning Commission | August 12, 2021

Overview

- Update on Palmdale2045
- Present overview of Policy Frameworks and community feedback
- Receive feedback on the draft policy frameworks



Palmdale 2045 Project Schedule



General Plan Overview

General Plan Requirements

Required Elements

- **Land Use**
- **Circulation**
- **Housing**
- Conservation*
- **Open Space****
- Noise
- **Safety**
- Air Quality
- **Environmental Justice**

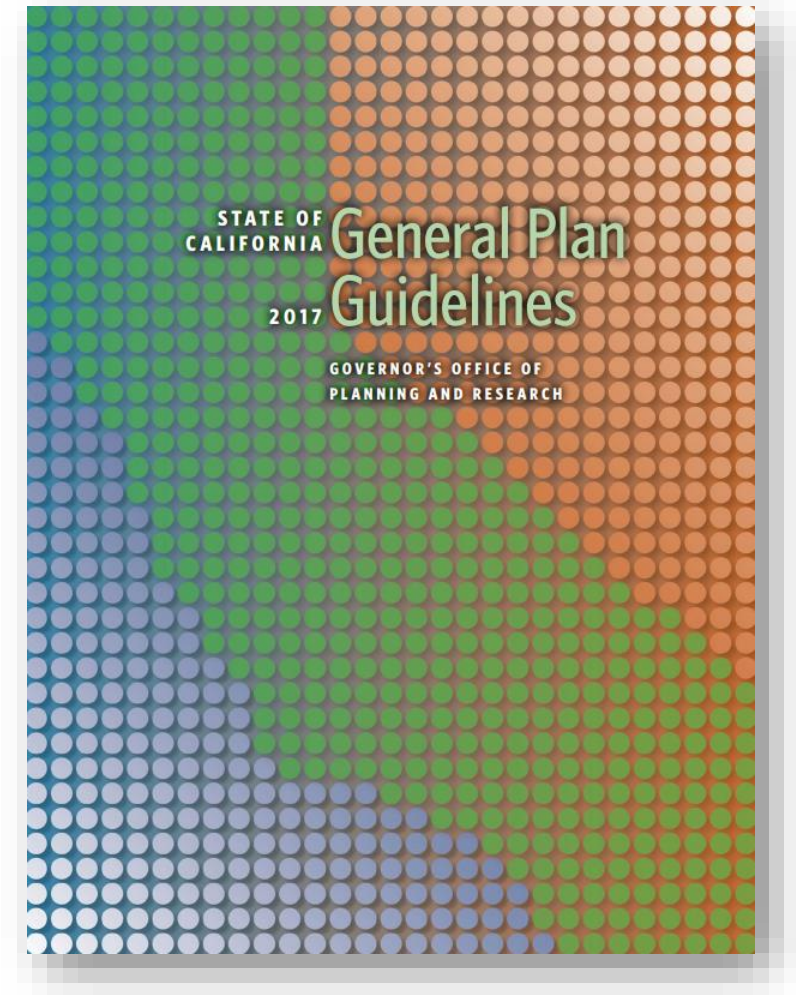
* Includes Cultural Resources

** Includes Parks and Recreation

Additional Considerations

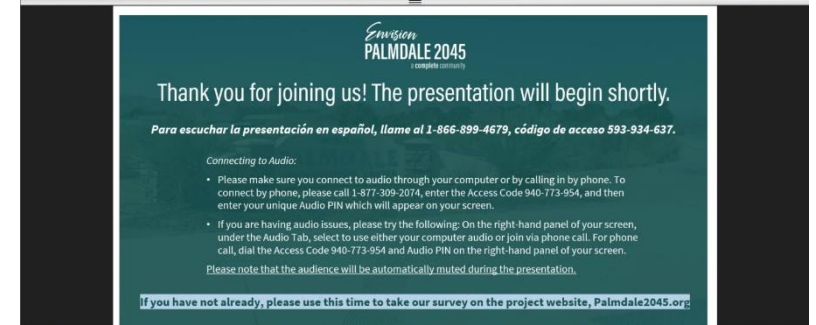
- **Community Design**
- **Equitable and Resilient Communities**
- **Healthy Communities**
- **Economic Development**
- **Climate Change**
- **Military Compatibility**

*Previously referred to as
“Military Readiness”*



Summary of Engagement to Date

- 2 in-person workshops
- 9 pop-up workshops
- 3 rounds of stakeholder focus groups (1 in person & 1 virtual)
- 2 live virtual presentations + Q&A sessions
- 3 online surveys
- 17 GPAC meetings (ongoing)
- 3 presentations to City Council
- 4 presentations to Planning Commission



Major Vision Themes



Unified + welcoming



Vibrant Downtown



Diverse, high-quality jobs



Resilient local economy



Safe + healthy community



Quality medical + mental healthcare



Housing options for all stages of life + ability



Quality + accessible education

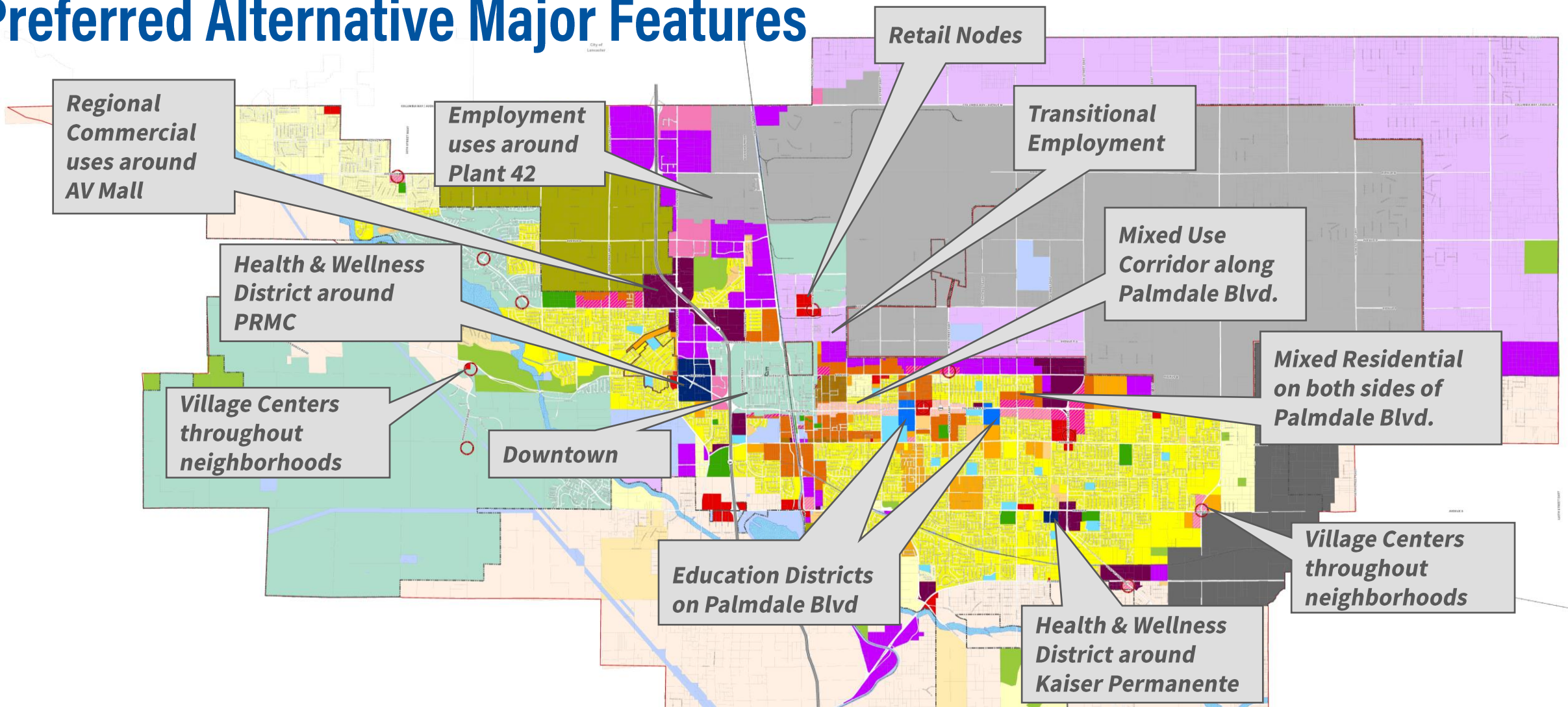


Preserve natural setting



Forefront of transportation Innovation

Preferred Alternative Major Features



Residential Designations

- Residential Neighborhood 1
- Residential Neighborhood 2
- Residential Neighborhood 3
- Residential Neighborhood 4

Mixed Use

- Mixed Use 1
- Mixed Use 2
- Mixed Use 3
- Mixed Use 4
- Health and Wellness
- Educational Flex

Commercial/Office/Other

- Neighborhood Commercial
- Regional Commercial
- Visitor Commercial
- Specific Plan

Industrial

- Employment Flex
- Industrial
- Aerospace Industrial

Public

- Public Facility-Park
- Open Space

- City Boundary
- Sphere of Influence
- "Village Centers"
- Major Highway/Arterial
- Railroad
- Water Body/Aqueduct

Policy Frameworks

Military Compatibility Policy Framework

Introduction

The City of Palmdale has embarked on a comprehensive update to its General Plan, called “Envision Palmdale 2045: A Complete Community,” to create a forward-looking document that will serve as the blueprint for the City’s vision through the year 2045. The goals, policies, and actions in Palmdale 2045 will serve as a compass for decision-makers and will shape future plans and actions of the City. This revised policy document will replace the 1993 General Plan.

This Military Compatibility policy framework is an interim step in the General Plan Update process prior to drafting the element (or chapters). This framework highlights key outcomes and performance metrics related to military activity and includes a draft policy framework that includes goals, policies, and implementation activities. This policy framework was developed by compiling feedback from key stakeholders, community members, General Plan Advisory Committee members, Planning Commission, and City Council. This framework synthesizes critical issues and policy approaches by describing key strengths and opportunities, challenges and threats, and what we heard from the community.

Where We Are Now

The following are strengths, opportunities, challenges, and threats that have been identified by the planning team throughout the course of the General Plan update process, as well as input heard from community members, that have shaped the military compatibility policy framework.

Strengths. Palmdale is home to some of the most innovative research and development in the Aerospace industry. Air Force Plant 42 supplies high quality STEM jobs for the region and is one of the City’s largest employers.

Opportunities. Plant 42 brings weekly visitors to Palmdale. Several long-range major transportation improvements are planned, which will make travel to Palmdale faster and more efficient, opening the opportunity for further aerospace collaborations, local suppliers, and workers to travel to the City.

Policy Frameworks = An Interim Step

- These are initial, general ideas for policy direction
- This is not an exhaustive list of policies or measures but rather, ideas for review and reaction
- Additional policies + measures will be included in the General Plan

Policy Framework Topic Meetings

**Safety,
Infrastructure,
& Hazards**

June 17th

**Resilience,
Sustainability, &
Climate Change**

June 30th

**Land Use,
Mobility, and
Housing**

July 15th & 28th

**Economic
Development &
Military
Compatibility**

August 5th

**Health,
Environmental
Justice, Equity,
Parks, & Public
Facilities**

August 11th

Conservation

Open Space

Air Quality

**Cultural
Resources**

Noise

Meeting Outreach

- Digital press releases
 - Antelope Valley Press, Antelope Valley Times, and the Antelope Valley Daily News
- The Palmdale Minute
 - weekly video segment in English and Spanish
- E-blasts in English and Spanish
- Updates on Palmdale social media platforms
- Council announcements
- Auto mall billboard
- Workshop flyers were distributed to the following organizations and locations:
 - City Hall
 - SAVES
- Print advertisements were placed in Palmdale Connections Magazine



Meeting Organization

| | |
|------------------------|---|
| Context | <ul style="list-style-type: none">• Background on each topic• Key strengths, weaknesses, opportunities, threats• Direction from the community on each topic• Related existing plans and programs |
| Policy Overview | <ul style="list-style-type: none">• Desired outcomes• Metrics• Overview of goals• Overview of policies |
| Feedback | <ul style="list-style-type: none">• Question and answer• Breakout group discussions• Public comment• Review and comment on policy documents (Konveio) |

Framework Structure

Performance Metrics

Data used to measure progress

Targets

Level of performance to measure implementation

Outcomes



Statement describing where we want to be in 2045

Goals

A general expression of community values and direction, expressed as ends

Policies + Measures

Policies: A specific statement that guides decision-making

Measures: An action, partnership, or program that carries out a policy

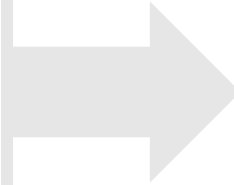
Overview of Goals and Outcomes

- Not an exhaustive list
- Highlights presented to the GPAC for their feedback
- Detailed outcomes, goals, polices and performance metrics included in policy framework reports

Land Use, Design and Housing Goals + Outcomes

Goals

- Range of housing opportunities and types
- Complete neighborhoods and village centers
- Transit-oriented community near High-Speed Rail
- Urban core infill
- Improved economy with more jobs through industrial/office uses and Plant 42 Buffer



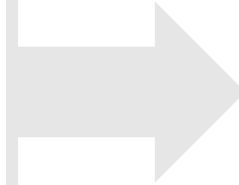
Outcomes

- Balanced jobs and housing growth
- Promote mixed income and affordable housing
- Walkable, complete, “20-minute” neighborhoods
- Transit-Oriented community around future station
- More housing options, especially downtown
- Expansion of Aerospace, light industrial, film and office uses

Mobility Goals + Outcomes

Goals

- Safe and comfortable travel for all modes, ages, and abilities
- Provide affordable, equitable, and efficient access to opportunities
- Accommodate future travel growth and existing demand
- Enhance quality of life and public health



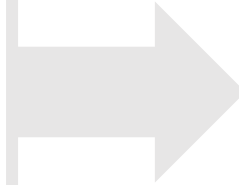
Outcomes

- Reduce severe injuries and fatal collisions
- More equitable and reliable access
- Increase walking, biking, and shared rides
- Reduce vehicle miles traveled (VMT)
- Increase quality of life and economic competitiveness

Economic Development Goals + Outcomes

Goals

- Attract diverse and high-quality job options
- Diversify housing options
- Provide high quality and accessible educational opportunities
- Activate a vibrant downtown
- Remain at the forefront of transportation innovation
- Identify support resources to incentivize development



Outcomes

- High standard of living for workers with diverse skill sets
- Safe and affordable housing for residents and workers
- Educational pathways for residents
- Build a Downtown core where residents and businesses can participate and celebrate in the City's economic prosperity
- Transportation to economic opportunities & resources
- New economic development opportunities to diversify the tax base

Military Compatibility Goals + Outcomes

Goals

- Continued growth of Plant 42 operations
- Avoid incompatible development
- Compatible future adjacent land uses
- Prevent residential noise complaints related to Plant 42
- New development within impact areas to comply with regulations
- Coordinated future development and infrastructure improvements
- Enhance communications



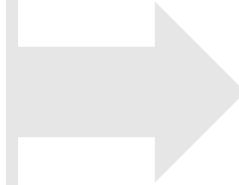
Outcomes

- Preserve and enhance Plant 42's mission
- Increase jobs in aerospace and supporting industries

Resilience, Sustainability and Climate Goals + Outcomes

Goals

- Reduced emissions from transportation, increase in walking, biking, and using transit
- Proactively advance community resilience
- Fossil fuel free energy system
- Green and decarbonized buildings
- Secure and safe water supply



Outcomes

- Reduce GHG emissions
- Restore and enhance ecosystems and natural open space
- Protect community from impacts of climate and other hazards
- Secure, clean water supply

Safety, Infrastructure, and Hazards Goals + Outcomes

Goals

- Self-sufficient in an emergency
- Minimize wildfire hazards
- Minimize flooding hazards
- Minimize crime
- Safe evacuation of residents




Outcomes

- Wildfire risk mitigation
- Mitigation of impacts from geologic hazards
- Minimize impacts of flooding
- Adaptable crime prevention
- Adequate emergency evacuation

Health and Equity Goals + Outcomes

Goals

- Promote access to affordable, quality produce
 - Promote access to quality health care
 - Encourage construction and maintenance of safe & sanitary housing
 - Provide range of exercise opportunities
 - Improve air quality
 - Provide quality educational opportunities
 - Improve public safety
- 

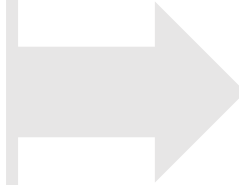
Outcomes

- Expanded economic opportunities for existing residents
- Increase multifamily housing units
- Improved opportunities for physical activity
- Improved air quality
- Strengthened access to healthy food

Parks, and Recreation Goals + Outcomes

Goals

- Parks and recreation to meet existing and future resident needs
- Passive and active open space
- Multi-use trails network
- Funding for parks development
- Acquire more parkland
- Safe, fun programming for all ages



Outcomes

- Connectivity
- New parkland
- Partnerships
- Upgrades to existing facilities

GPAC + Community Feedback on Policy Frameworks

Highlights

Safety

- Top safety concern is crime/crime prevention
- Concerns over future wildfires, communication during an emergency

Climate

- Increase use of renewable energy
- Desire to mitigate future power outages
- Educational resources for graywater
- Trash sorting should be more widely available
- Forest management planning

Land Use, Design, and Housing

- Higher education should be key outcome
- Support 20-minute neighborhoods
- Expand broadband internet access
- Disperse affordable housing across the City
- Provide care and services to homeless populations and develop a shelter
- Desire for more parks, trees, and greenspace
- Maintain natural areas and open space
- City funded infrastructure improvements to support development

GPAC + Community Feedback on Policy Frameworks

Highlights

Mobility

- Focus on youth supportive facilities
- Evaluate speeds as it relates to safety
- Consider CicLAvia events on Avenue Q
- Improve street lighting, specifically on Palmdale Boulevard
- Build bicycle facilities that are comfortable, so they're utilized
- Do not detract from vehicle circulation
- Install sidewalks
- Explore truck routes
- Consider quiet zones for railway intersections

Economic Development and Military Compatibility

- Preserve Plant 42 mission
- Diversify economic base to include private aerospace, film, and technology industries
- Consider environmental tourism as an economic opportunity
- Diversify housing and affordable housing options
- Promote alternative transportation connections from neighborhoods to job centers
- Provide land assembly in the Downtown area

GPAC + Community Feedback on Policy Frameworks

Highlights

Health & Equity/Parks & Recreation

- Collaborate with school districts regarding mental health education
- Consider educational campaign re. healthy foods
- Consider new City commissions for youth, seniors, and parks and recreation
- Plant more trees and consider appropriate criteria
- Provide support to community groups in Palmdale
- Prioritize what the City can do with limited funds
- Address concentration of certain uses – alcohol sales



Questions?

Upcoming Events and Next Steps



Thank you!

City of Palmdale

Phone

661-267-5200

Email

generalplan@cityofpalmdale.org