

Envision
PALMDALE 2045

Joint GPAC Meeting #17/Community Workshop

Special Meeting | August 11, 2021 | Policy Frameworks Series:
Health, Equity, Parks and Recreation

Please be advised that this meeting is being recorded

Special Meeting Agenda

- Welcome & GPAC Roll Call
- Pledge of Allegiance
- GPAC Meeting #16 Minutes approval
- Policy Frameworks Background
- Topic Context
- Group Discussion
- Public comment
- Next Steps

Please be advised that this meeting is being recorded



Introductions

- **Carlene Saxton**, Director of Economic & Community Development
- **Megan Taggart**, Planning Manager
- **Benjamin Fiss**, Senior Planner
- **Drew Pletcher**, Deputy City Attorney
- **Simran Malhotra**, Principal (Raimi + Associates)
- **Melissa Stark**, Senior Planner (Raimi + Associates)

Roll Call – GPAC Members

- **Tony Avila**
- **Juan Blanco**
- **Lourdes T. Everett**
- **Colby Estes**
- **Laura Gordon**
- **Theresa Hambro**
- **Matthew Harris**
- **Aurora Hernandez**
- **Pat Hunt**
- **Sheri Kaneshiro**
- **Teri Lamping**
- **Deborah Rutkowski-Hines**
- **Jason Zink**

Pledge of Allegiance



*I pledge allegiance
to the flag of the
United States of
America*

*and to the
Republic for which
it stands, one
Nation under God,
indivisible,
with liberty and
justice for all.*

GPAC Meeting #16 Minutes

- Motion to approve or deny?

POLL

What You Need to Know: Questions and Comments

Questions and Comments

- We will be pausing during the presentation to answer questions
- There will be additional opportunity after the presentation to provide comments
- Public comment will take place at the end of the meeting
- Send additional questions or comments to **generalplan@cityofpalmdale.org**

POLL

General Plan Overview

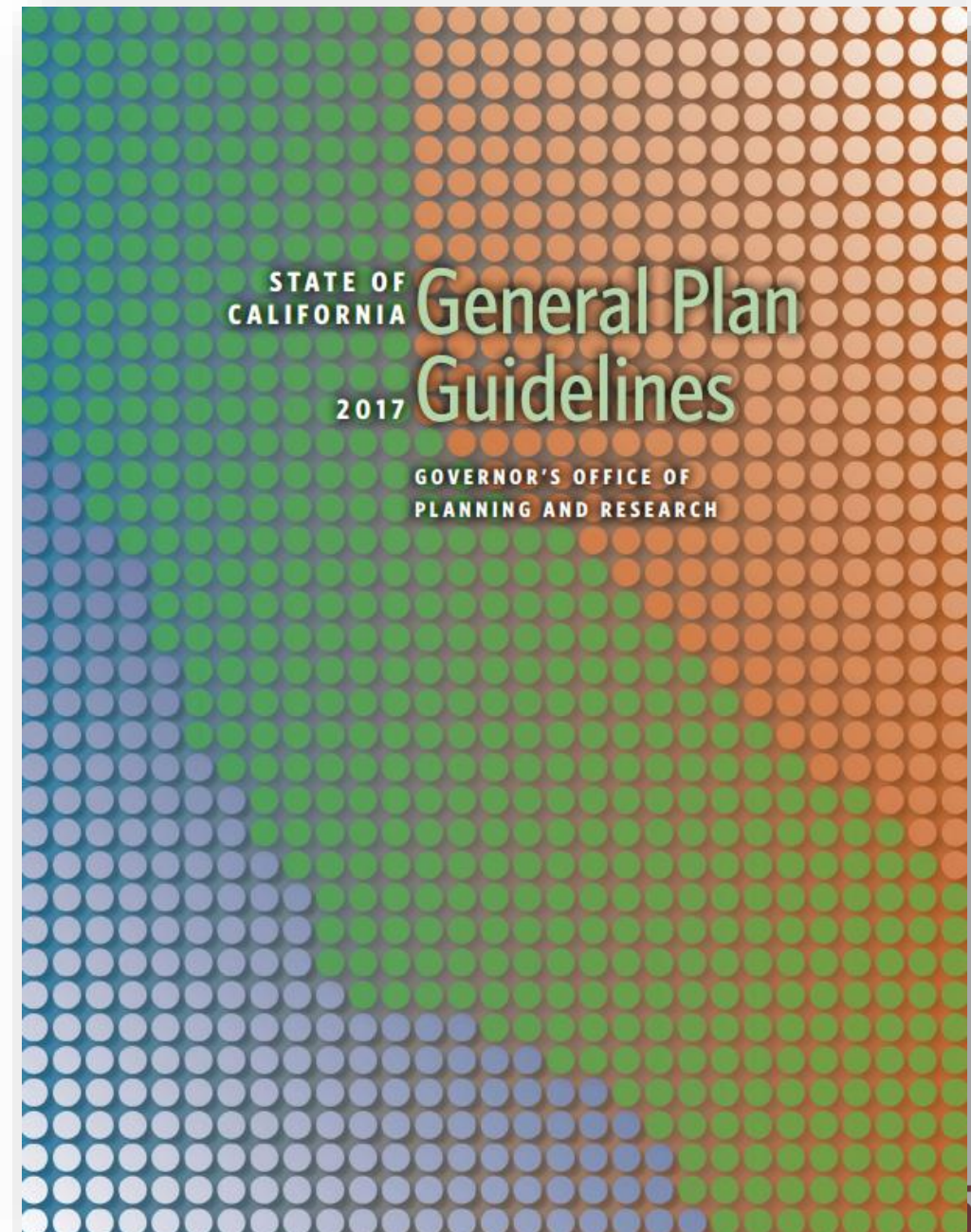
General Plan Requirements

Required Elements

- Land Use
- Circulation
- Housing
- Conservation
- **Open Space***
- Noise
- Safety
- Air Quality
- Environmental Justice

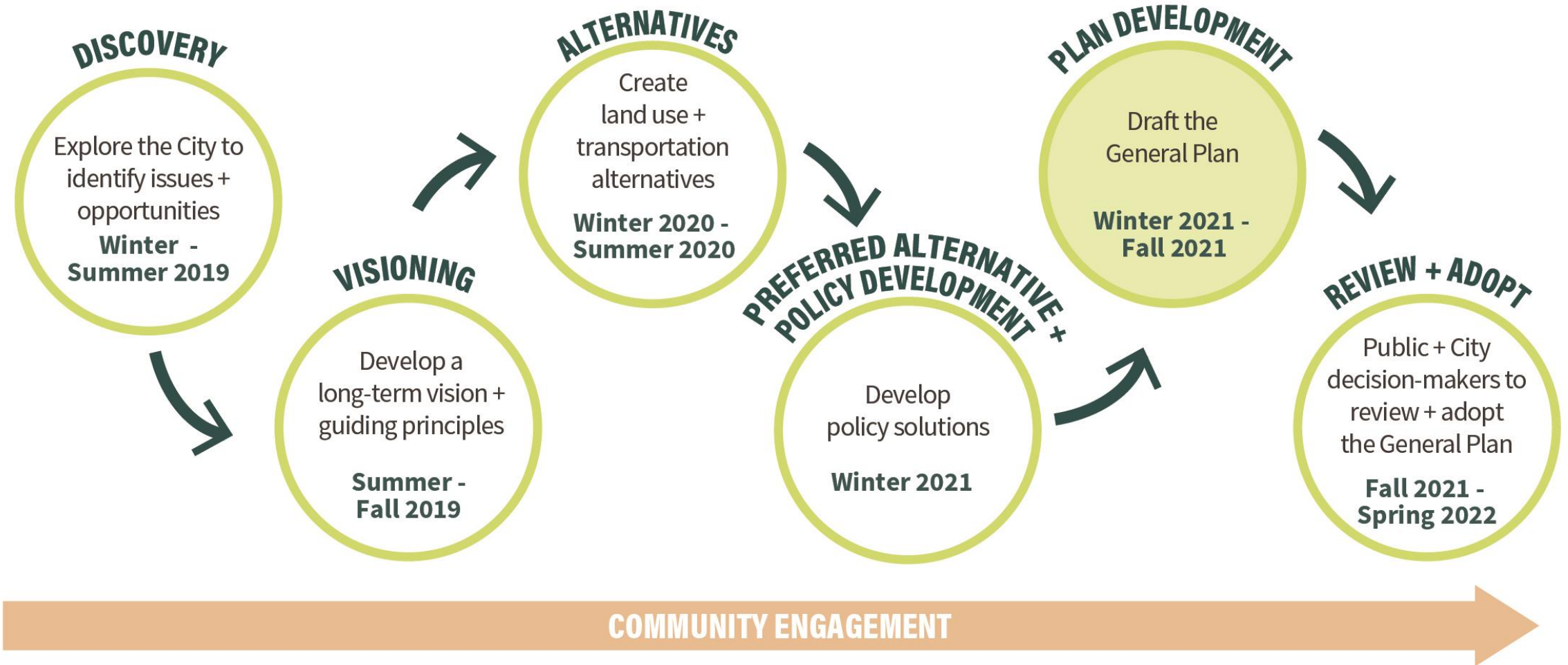
Additional Considerations

- Community Design
- **Equitable and Resilient Communities**
- **Healthy Communities**
- Economic Development
- Climate Change
- Military Compatibility



**This meeting will cover the topic of Parks and Recreation*

Palmdale 2045 Project Schedule



What are policy frameworks? And what do they include?

- Major topics that make up Elements of the General Plan
- An interim step in developing General Plan Elements
- An **opportunity for community input** on development of goals and policies

Safety,
Infrastructure,
& Hazards

June 17th

Resilience,
Sustainability, &
Climate Change

June 30th

Land Use,
Mobility, and
Housing

July 15th & 28th

Economic
Development &
Military
Compatibility

August 5th

Health,
Environmental
Justice, Equity,
Parks, & Public
Facilities

Tonight

Envision
PALMDALE 2045



Existing Setting

Health & Equity



What is a Health, Equity, Environmental Justice Element?

- Includes a findings from a detailed healthy community assessment
- Addresses SB1000 (Environmental Justice)
- Reflects a set of goals, policies, and related metrics to improve health and equity in Palmdale
- Help the City track progress over time

Covers topics including:

- Pollution exposure
- Public facilities
- Safe and sanitary housing
- Physical activity
- Other health risks/burdens
- Economic and education opportunity
- Access to healthcare
- Crime and public safety

Environmental Justice

- State mandated process (SB 1000)
 - Methodology
 - Topics
 - Tools
- Passed in 2016 to address health disparities in low income communities



****We are here***

Palmdale's Health & Equity Strengths

- Less exposure to most environmental pollution
 - Lower levels of particulate matter (PM2.5)
 - Less toxic releases from polluting facilities
 - Fewer groundwater threats and cleanup sites
- Comparatively affordable housing
 - Housing security
 - Pathway to homeownership
- High-quality STEM jobs
 - Pathway to economic opportunity

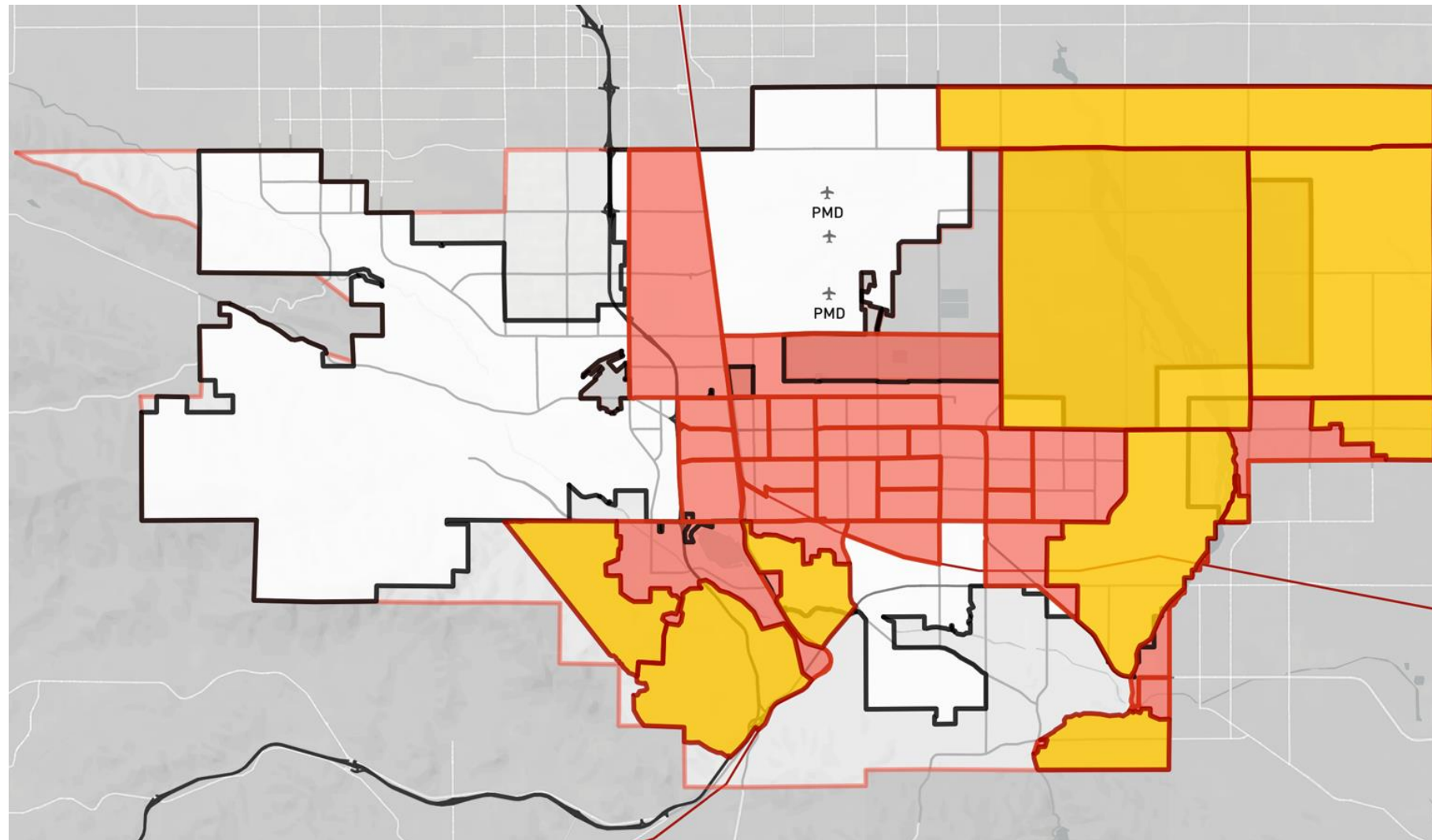
Palmdale's Health & Equity Strengths

- Less exposure to most environmental pollution
 - Lower levels of particulate matter (PM2.5)
 - Less toxic releases from polluting facilities
 - Fewer groundwater threats and cleanup sites
- Comparatively affordable housing
 - Housing security
 - Pathway to homeownership
- High-quality STEM jobs
 - Pathway to economic opportunity

Palmdale's Health & Equity Challenges & Threats

- Lower life expectancy compared to Los Angeles County
- 48% of population is under 200% of Federal Poverty Line
- Limited access to healthy food retailers and open spaces
- Antelope Valley has high levels ozone pollution. Annual average exceeds safe levels for vulnerable populations.
- Compared to countywide averages, Palmdale has higher rates of:
 - Asthma
 - Asthma-related emergency department visits
 - Chronic obstructive respiratory disease (COPD)
 - Obesity
 - Coronary heart disease
- Disproportionately higher health impacts in low-income communities and communities of color.

Disadvantaged Communities



Legend

- City Limits
- Sphere of Influence
- Railroads
- Freeways/Highways
- Major Streets
- Disadvantaged Communities
- Vacant Areas

Feedback from Community Engagement

- Certain areas have poor access to grocery stores and abundance of tobacco and liquor retailers
- Health problems and disparities are concentrated in specific areas
- Some roadways and sidewalks don't support pedestrians, bikes, and elderly/disabled populations
- Need for Eastside Junior College campus
- Need additional medical facilities and providers
- Better food access
- Need for expanded tree canopies
- Expanded transit and safe routes for walking and biking

Topics To Be Addressed in the Health and Equity Element

Economic
Opportunity
and Education
Parity

Access to Health
Care

Housing

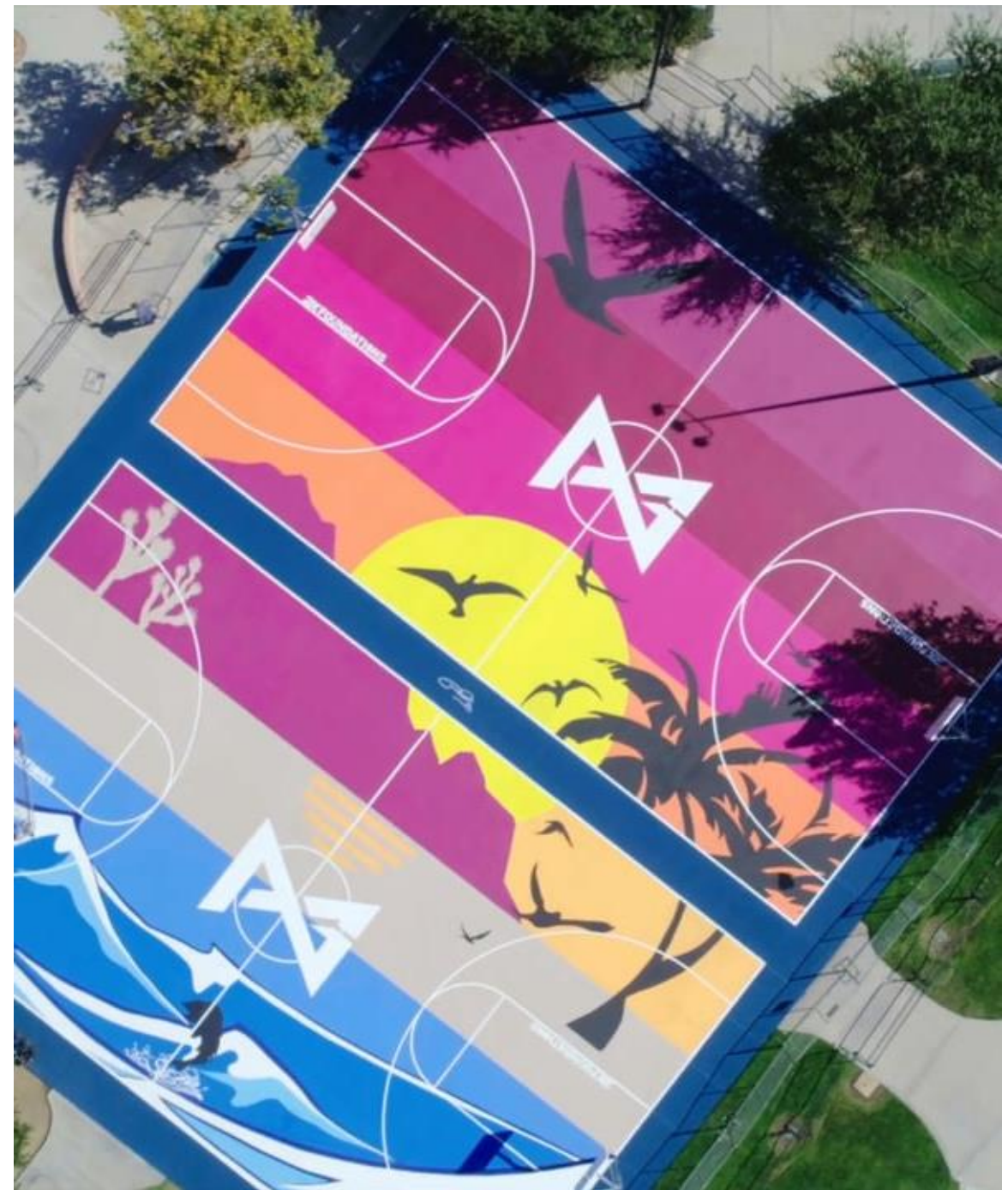
Obesity

Air Quality and
Respiratory
Health

Food Access

Crime and
Public Safety

Parks and Recreation



What is a Parks and Recreation Element?

- Identifies existing, planned, and future priority areas for parks, recreation, and trails
- Establishes a standard (or goal) for parks citywide
- Establishes criteria for determining land dedication requirement and in-lieu fee based on park standards
- Reflects a set of goals, policies, and related metrics for parks and recreation in Palmdale
- Help the City track progress over time

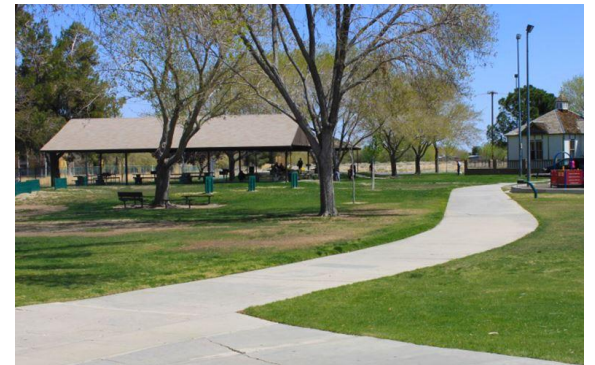
Parks and Trails in Palmdale

Parks

- Palmdale has **20 parks**, totaling **365 acres**
- Variety of amenities
 - Playgrounds, sports fields, skatepark, water park, multiple public pools, amphitheater, airpark
- Established standard of **5 acres of parkland per 1,000 residents**

Trails

- Fairly limited formal trails
 - Ritter Ridge and Joshua Ranch Loop (11-miles), Avenue S Bike Trail (1.5-miles), Barrel Springs Trail, Amargosa Creek Trail
- Many informal trails in the city's foothills



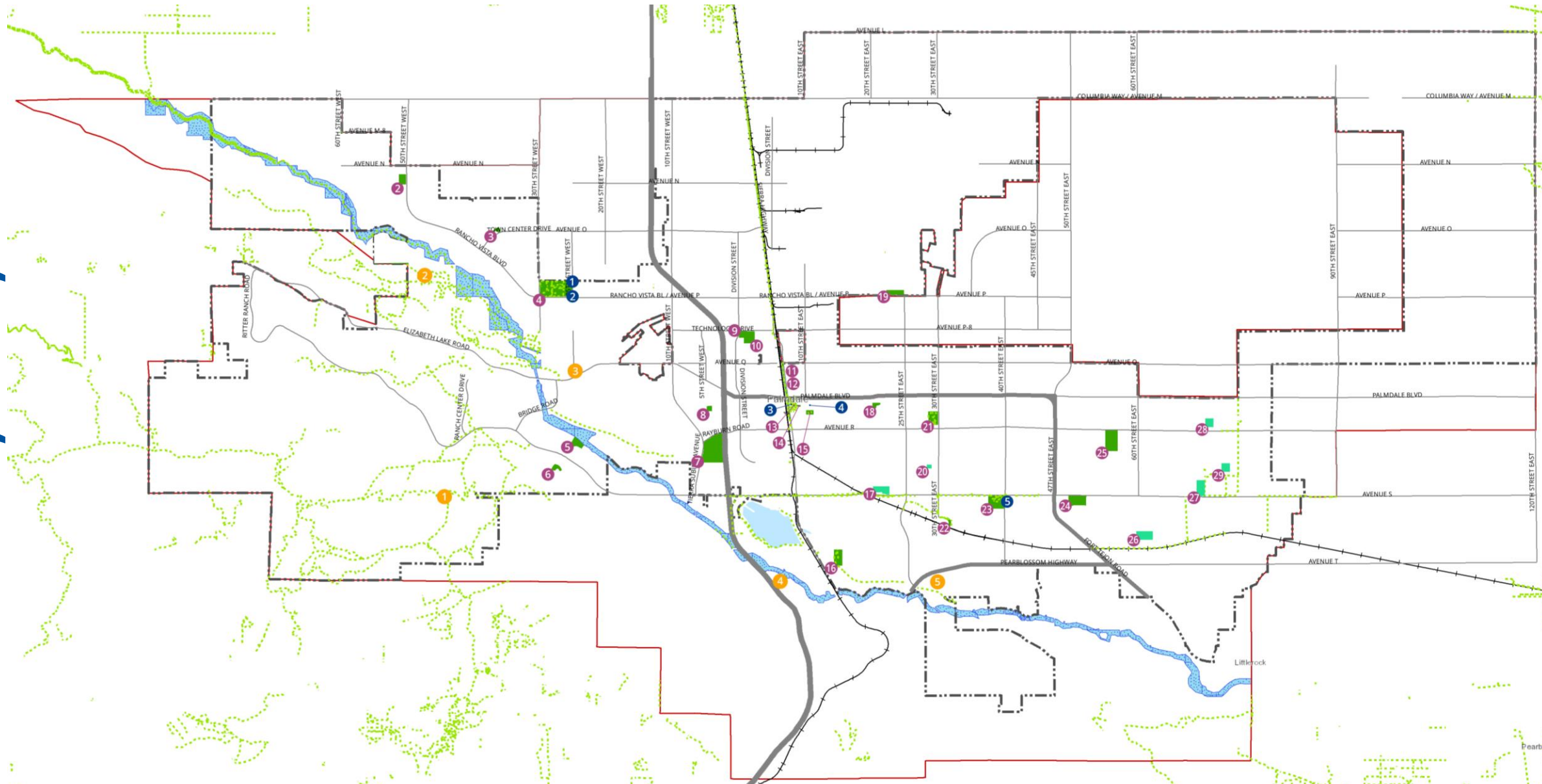
Recreation in Palmdale

Recreation

- City operates 12 cultural and recreation facilities
 - Recreation centers, Pools
 - Skate parks
 - Palmdale Library
 - Legacy Commons for Active Adults
 - Best of the West Softball Complex
 - Palmdale Amphitheatre
 - DryTown Water Park



Palmdale Parks, Trails, and Rec



Parks, Recreation, and Trails

- Existing Trails
- California Aqueduct
- Highways
- Major Arterials
- Railroads
- Water Body
- Existing Parks
- Future Parks
- City Boundary
- Sphere of Influence

Parks with Recreation Facilities

- 1 - Ritter Ranch Park
- 2 - Arnie Quinones Park
- 3 - Rancho Vista Neighborhood Park
- 4 - Marie Kerr Park
- 5 - Foothill Park
- 6 - Anaverde Hills Park
- 7 - Pelona Vista Park
- 8 - Manzanita Heights Park
- 9 - American Indian Little League Site
- 10 - Desert Sands Park

Parks with Recreation Facilities

- 11 - Dr. Robert C. St. Clair Parkway
- 12 - Demonstration Garden
- 13 - Poncitlan Square
- 14 - Legacy Commons
- 15 - Melville J. Courson Park
- 16 - Tejon Equestrian Park
- 17 - Palmenthol History Park
- 18 - Palmdale Youth Pony League Fields
- 19 - Joe Davies Heritage Airpark
- 20 - Undeveloped Park

Parks with Recreation Facilities

- 21 - William J. McAdam Park
- 22 - Joshua Hills Park
- 23 - Palmdale Oasis Park
- 24 - Sam Yellen Community Park
- 25 - Domenic Massari Park
- 26 - 60th St East & Avenue S8
- 27 - Undeveloped Park
- 28 - 70th St East & North of Avenue R
- 29 - 72nd St East & Avenue R8

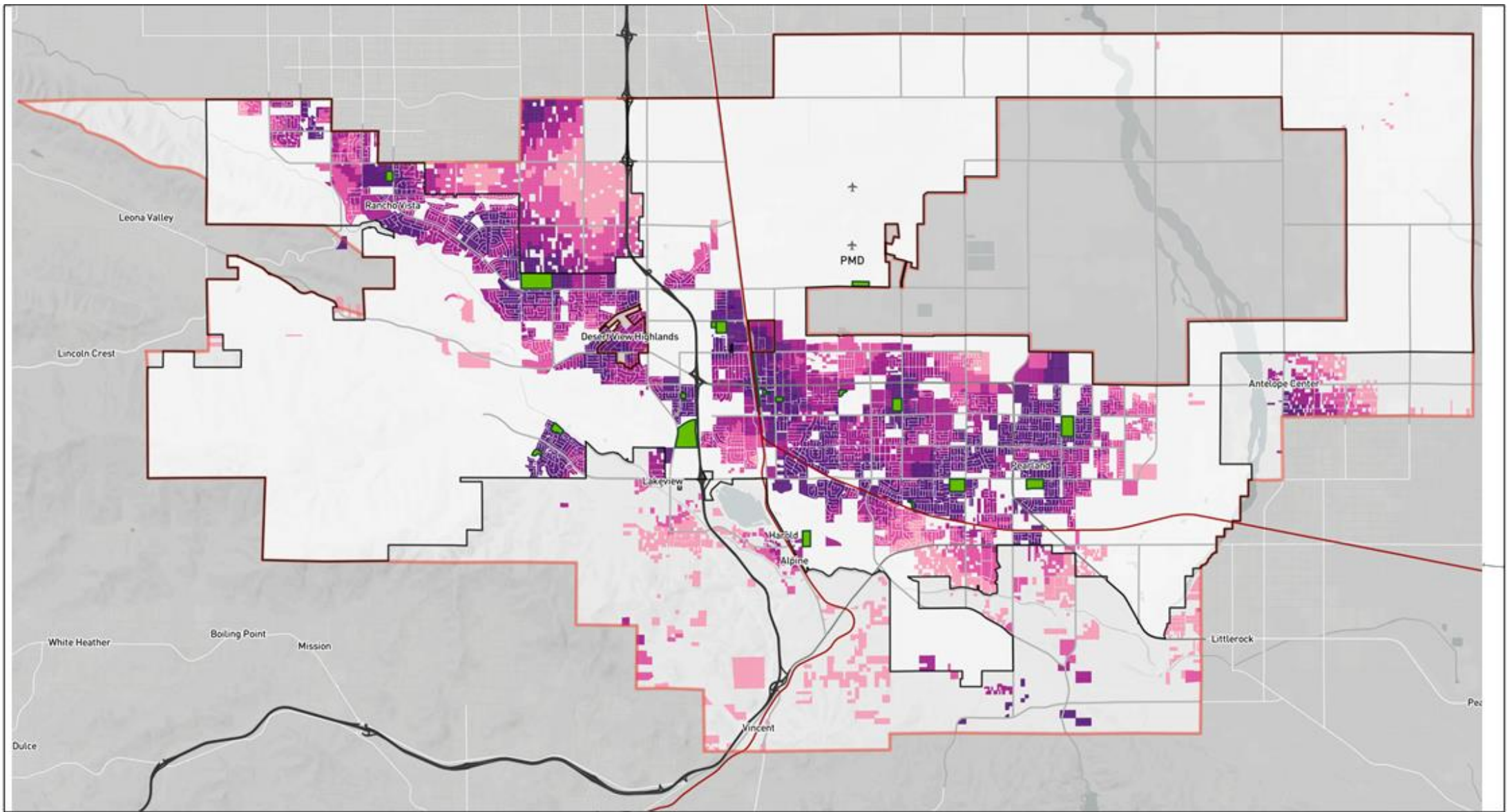
Standalone Recreation Facilities

- 1 - Best of the West Softball Complex
- 2 - Palmdale Amphitheater
- 3 - Chimbole Cultural Center
- 4 - Palmdale Playhouse
- 5 - Drytown Water Park

Trailheads

- 1 - Ritter Ranch Trail
- 2 - Joshua Hills Trail (not currently accessible)
- 3 - Amargosa Creek Trail
- 4 - Palmdale Hills Trail
- 5 - Barrel Springs Trail

Future Parks Access Map



Walking Time to Nearest Park (minutes)



Data Source: City of Palmdale; Urban Footprint, 2021.

Palmdale's Parks and Recreation Strengths + Challenges

Strengths

- Over 360 acres of existing parkland
- City operates 12 cultural and recreation facilities
- AV partnerships to offer neighborhood targeted community programs
- Maintenance and improvements to existing facilities is a City priority
- Good access to parks from existing neighborhoods

Challenges

- Desire for more parks but limited funds for acquisition of land and facilities construction
- Access to parks across the City may not be equitable

Recent + Upcoming Parks Improvements

Recent – Marie Kerr Park Playground & Court Refurbishment

- Upgrade to children’s playground and adult fitness station
- All-inclusive playground
- Refurbish existing basketball court



Recent – Domenic Massari Court Refurbishment

- Refurbish existing basketball courts and develop new ones

Upcoming - Rancho Vista Park

- Groundbreaking March 2021
- Next to Esperanza Elementary
- Meandering walking path with lighting, connections to school, play structure, open grassy area, restrooms, among other features



Topics To Be Addressed in the Parks and Recreation Element

Parks and
Recreation

Trails

Open Space

Natural
Resources

Existing Plans and Programs

- 1993 General Plan Parks, Recreation, and Trails Element
- 2018-28 Capital Improvements Plan (CIP)
- Draft Active Transportation Plan

Feedback from Community Engagement

- Develop more parks, specifically neighborhood scale parks
- Improve facilities and amenities at existing facilities
 - Lighting and security
- Develop more bike lanes and trails
- Create more recreational facilities
 - Public swimming pools
 - Better access to active parks and trails
 - More baseball facilities
 - Splash pads
 - Dog parks
- More programming and activities for youth, adults, seniors, and families
- Preserve desert atmosphere

A dark teal overlay covers the entire image. In the background, a residential area is visible with a sign that says "PALM BANK". The sign is partially obscured by the text "Questions?".

Questions?

Policy Framework

Parks and Recreation Policy Framework

Introduction

The City of Palmdale has embarked on a comprehensive update to its General Plan, called "Envision Palmdale 2045: A Complete Community," to create a forward-looking document that will serve as the blueprint for the City's vision through the year 2045. The goals, policies, and actions in Palmdale 2045 will serve as a compass for decision-makers and will shape [future plans](#) and actions of the City. This revised policy document will replace the 1993 General Plan.

This parks and recreation policy framework is an interim step in the General Plan Update process prior to drafting the elements (or chapters). This framework highlights key outcomes and performance metrics related to parks and recreation and includes a draft policy framework that includes goals and policies. This policy framework was developed by compiling feedback from community members, General Plan Advisory Committee members, Planning Commission, and City Council. This framework synthesizes critical issues and policy approaches by describing key strengths and opportunities, [challenges](#) and threats, and what we heard from the community.

Where We Are Now

Previous steps in the planning process have identified community strengths and opportunities, and challenges and threats related to parks and recreation. Those are summarized below.

Strengths and Opportunities

- **Palmdale currently has 360 acres of existing parkland and operates 12 Cultural and Recreation Facilities.** Cultural and Recreation Facilities include recreation centers, pools, skate parks, library, Legacy Commons for Active Seniors, Best of the West Softball Complex, Palmdale Amphitheatre, and [DryTown](#)® Waterpark. These facilities provide opportunities to facilitate an active and healthy community. Expanding a network of parkland and open space would provide opportunities to meet City's established park goals.

Policy Frameworks = An Interim Step

- These are initial, general ideas for policy direction
- This is not an exhaustive list of policies or measures but rather, ideas we want you to review and react to
- Additional policies + measures will be included in the General Plan

Framework Structure

Performance Metrics

Data used to measure progress

Targets

Level of performance to measure implementation

Outcomes



Statement describing where we want to be in 2045

Goals

A general expression of community values and direction, expressed as ends

Policies + Measures

Policies: A specific statement that guides decision-making

Measures: An action, partnership, or program that carries out a policy

Desired Health and Equity Outcomes

POLL

Expanded
economic
opportunities for
existing residents

Increased number
of multifamily
housing units

Improved
opportunities for
physical activity

Improved air
quality

Strengthened
access to healthy
food

Performance Metrics



Economic Opportunity

5,000 youth participate in job training programs and connected to employment opportunities in local industries by 2045



Multifamily Housing

5,000 new multifamily housing units by 2045 with 20% of them affordable for families earning less than 80% of AMI



Physical Activity

90% of residents live within a 20-minute walk of a public park or multi-use trail



Clean Air

600 new trees planted annually for a total of 15,000 new trees by 2045



Healthy Food

90% of residents live within a 20-minute walk of a grocery store, farmers' market, or other healthy food retailer

Goals Overview

Provide access to affordable and high-quality produce

Promote access to high-quality health care

Encourage construction and maintenance of safe & sanitary housing

Provide range of opportunities to exercise

Improve air quality

Provide high quality and accessible educational opportunities

Improve public safety

Promote access to quality health care

- Create **3 health and wellness districts** in locations well-served by transit
- Encourage a mix of **medical, health, and wellness uses**
- Work with local transit agencies to **ensure bus routes provide service** from disadvantaged communities to health service facilities
- Collaborate with the County of Los Angeles and regional health organizations to **improve access to mental healthcare**, especially in disadvantaged communities
- Develop **programs and services that help reduce stress** and mental health issues, especially for vulnerable populations
- Coordinate with the Los Angeles County Department of Children and Family Services to **support programs for at-risk youth**, foster youth, and parents of at-risk youth

Encourage safe & sanitary housing

- Ensure ongoing and effective **health and safety code enforcement**; prioritize rental properties in disadvantaged communities
- Consider a **housing rehabilitation program** that assists multi-family residential property owners to improve affordable rental housing supply
- In cooperation with Los Angeles County and other regional agencies, establish a **lead removal program** for homes built before 1980
- **Support creativity in the construction of new housing** by proactively developing zoning and healthy design guidelines
- Work with developers to prioritize health in planned housing construction, using **healthy design checklists** and/or other review tools

Provide range of opportunities to exercise

- **Increase access to parks** and open spaces in park-poor neighborhoods.
- **Provide new trails systems**, especially in disadvantaged communities, that connect to the regional trail system
- Prioritize **investments in recreational programs** that focus on physical activity
- Develop an **agreement with local school districts** to allow City residents access to outdoor recreational areas during non-school hours
- **Prioritize transportation system improvements** that encourage walking, biking, and transit use **in disadvantaged communities**
- **Enhance existing streetscapes** to include greater sidewalk coverage, walkway connectivity, street crossing safety features, traffic calming measures, and other design elements

Improve air quality

- **Plant street trees**, especially in disadvantaged communities
- **Transition City's vehicle fleet** to lower-emission fuel technologies
- Designate **truck routes to avoid sensitive land uses**, where feasible
- Partner with CalTrans to study the potential to **re-route Palmdale Boulevard truck traffic** to Pearblossom Highway
- Avoid siting sensitive uses (schools, childcare centers, senior housing, and affordable housing) near **land uses that produce localized air pollution**
- Develop a **citywide air quality monitoring program** to identify areas with high gas and oil emissions, in addition to tracking changes over time, identifying polluters, and analyzing potential interventions

Provide access to affordable and high-quality produce

- Attract one (or more) **weekly Certified Farmers Markets** to Palmdale
- Utilize economic development incentives to **encourage stores to sell fresh, healthy foods** such as produce in disadvantaged communities.
- **Limit fast food and liquor stores** in neighborhoods with a significant concentration of stores near child-sensitive areas, such as schools, parks, and childcare facilities.
- **Strengthen the local economy** by encouraging local food production, community gardens, and farmers markets on vacant or underutilized parcels
- Improve ready access to **healthy food retailers along key transit corridors** and within transit-oriented developments
- Work with local transit agencies to **ensure that bus routes provide service** from disadvantaged communities to healthy food retailers

Goals Overview

POLL

Provide access to affordable and high-quality produce

Promote access to high-quality health care

Encourage construction and maintenance of safe & sanitary housing

Provide range of opportunities to exercise

Improve air quality

Provide high quality and accessible educational opportunities

Improve public safety

Desired Parks and Recreation Outcomes

POLL

Connectivity

New parkland

Partnerships

Upgrades to
existing
facilities

Parks and Recreation Goals Overview

Parks and recreation facilities to meet needs to existing and future residents

Passive and Active open space network

Multi-use trails network

Funding for parks development

Acquire more parkland

Safe, fun programming for all ages

Parks and recreation facilities to meet needs of existing and future residents

- Prepare a **Parks Master Plan** to address park needs, recreation programming and facilities and funding opportunities
- Park sites are **located equitably**, throughout the City, to maximize access to parks for all residents within a **20-minute walking distance**
- Provide **culturally sensitive programming** at various recreation facilities
- Provide a variety of parks and recreational facilities **accessible to all citizens** throughout the City
- Prioritize development of new parks and recreation facilities in **underserved areas** of Palmdale, encouraging **access to free or low-cost recreation** for all Palmdale residents
- **Encourage expansion of amenities** at existing public parks
- Evaluate **adopted park standards**, including **designations** for type of parks and **guidelines** for future parks facilities
- Incorporate all design features required by the **Americans with Disabilities Act** to improve parks access for all
- Co-locate schools and parks and partner with non-profit organizations, to provide recreational opportunities that benefit both students and the public

Passive and Active Open Space Network

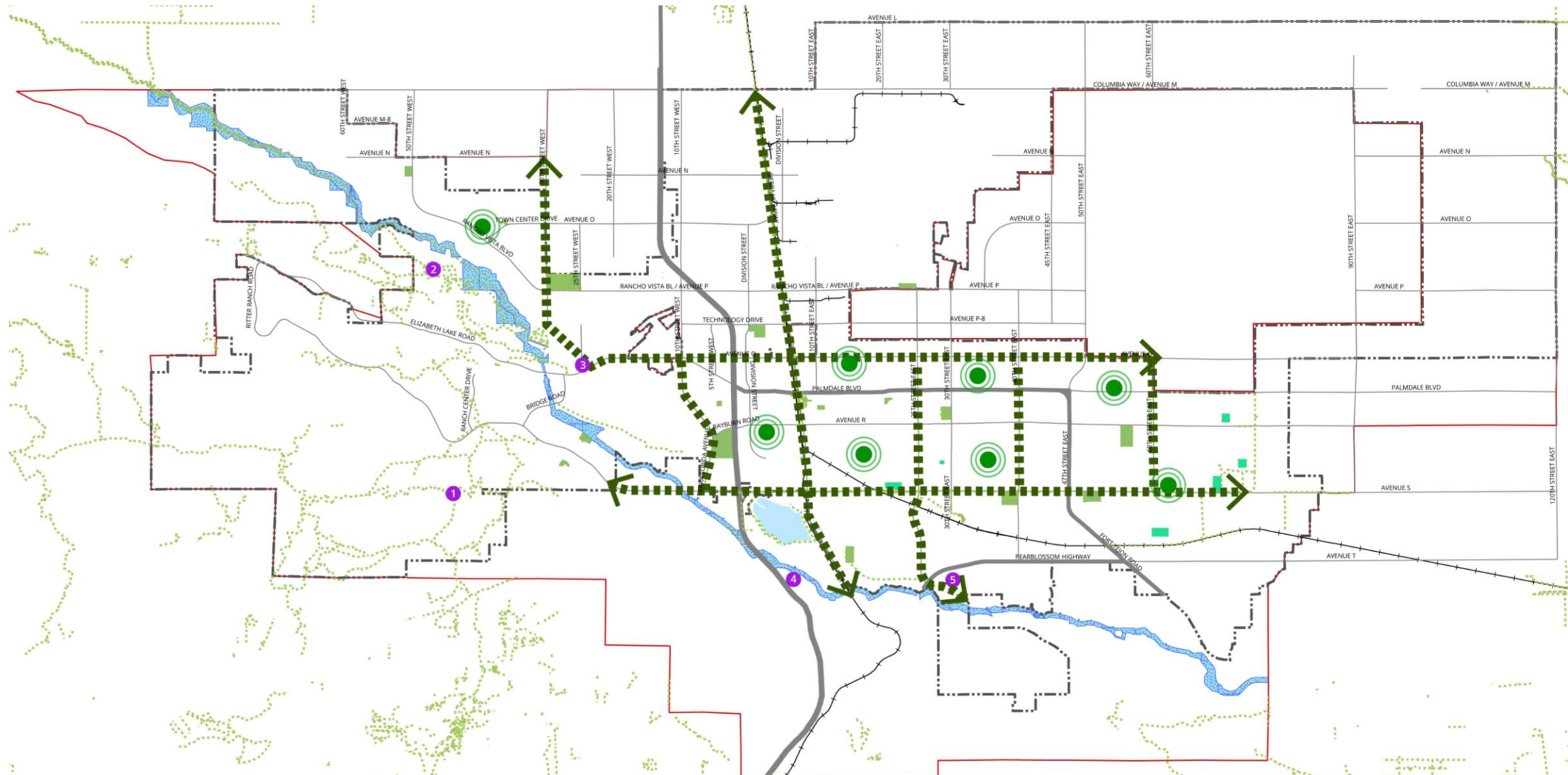
- Develop an **open space network** through preservation of corridors along fault zones, natural drainage courses and in hillside areas to connect with the large areas of open space designated on the General Plan Land Use Map.
- Encourage the use of **open space areas for passive recreation** with access points, multi-use trails, and interpretive information.



Multi-use trail network

- **Provide and maintain multi-use trails** connecting to existing or currently planned trails
- To the extent feasible, ensure that **trails are accessible to all residents** and incorporate design features, including trail head material that provide ADA access
- Prioritize **multi-use trail connections** to existing neighborhoods, public parks, and public facilities
- Provide trail support facilities as needed throughout the multi-use trails network
- Explore various means of **acquiring trail easements or rights-of-way** and pursue all **available funding sources** to provide trail acquisition and construction
- To the extent feasible, use **grant funding and private donations** to finance trail construction

Future Parks and Trails Network



Future Parks, Recreation, and Trails

- | | | | |
|---------------------|---------------------|----------------------------------|---|
| Trails | Water Body | Key Access Points to Parks & Rec | Trailheads |
| California Aqueduct | Existing Parks | Future Park Priority Area | 1 - Ritter Ranch Park |
| Highways | Future Parks | | 2 - Joshua Hills Trail (not currently accessible) |
| Major Arterials | City Boundary | | 3 - Amargosa Creek Trail |
| Railroads | Sphere of Influence | | 4 - Palmdale Hills Trail |
| | | | 5 - Barrel Springs Trail |

Parks and Recreation Goals Overview



Parks and recreation facilities to meet needs to existing and future residents

Passive and Active open space network

Multi-use trails network

Funding for parks development

Acquire more parkland

Safe, fun programming for all ages



Questions?

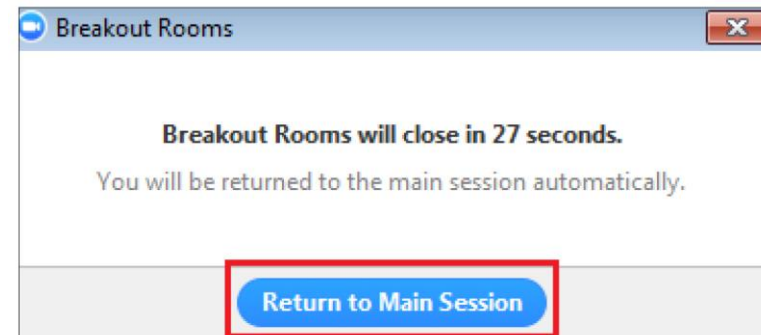
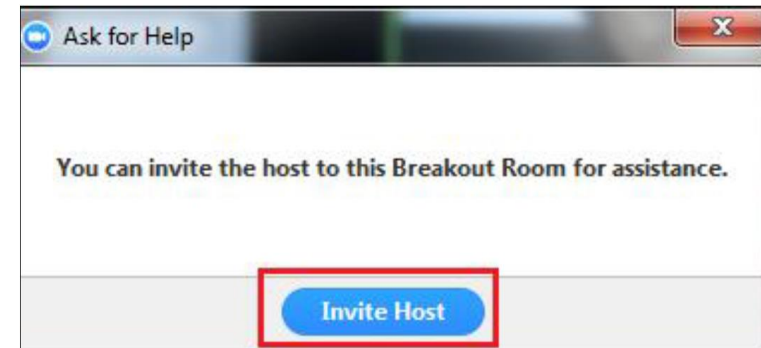
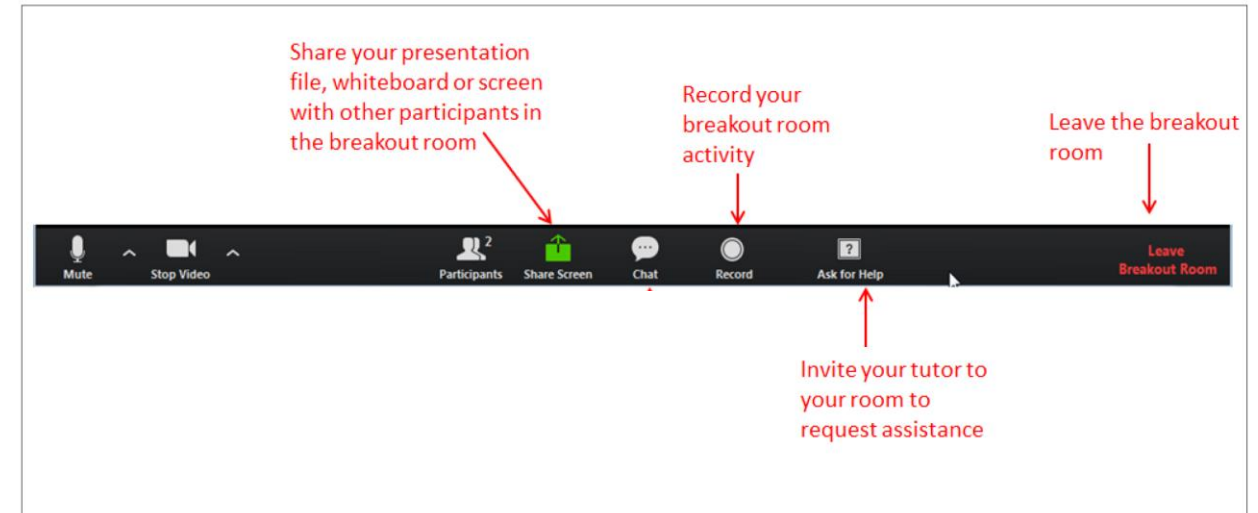
The background image is a photograph of a desert landscape, likely in Palm Springs, California. It features a large, dark, curved sign with the word 'PALM' visible. The scene includes various desert plants like yucca and agave, a paved road in the foreground, and mountains in the distance. The entire image is covered with a semi-transparent dark teal filter.

Discussion



Breakout Rooms

- Breakout rooms allow **participation from more people** during a large meeting
- The meeting “host” will invite you and may set a timer, broadcast announcements, or pop-in to help
- “Participant” controls looks very similar to those in main session
- Brief disconnection then reconnected into the new breakout room

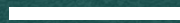


Small Group Instructions

- Introductions
- Questions for clarification
- Discuss each question (5-15 min each)
 - **Of the outcomes and policy ideas, which resonate the most?**
 - **Are there any other outcomes we should consider?**
 - **Are there any policy ideas that we should consider?**
 - **Is there anything else you'd like to share about these topics?**
- Consensus is NOT required
- Facilitator will record all comments

The background image shows a desert landscape with a stone archway in the middle ground. The archway has some text on it, including the word "PALM". There are palm trees and other desert plants around the archway. In the background, there are mountains and some utility poles. The entire image is covered with a dark teal overlay.

Report Back

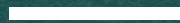


Public Comment

You can also email generalplan@cityofpalmdale.org


The background image is a photograph of a desert landscape, likely a park or public space. In the center, there is a stone archway with a sign that partially reads "PALM". The landscape is filled with various desert plants, including large spiky agave-like plants and smaller shrubs. In the distance, there are low mountains and utility poles. The entire image is covered with a semi-transparent dark teal filter.

Next Steps



Policy Framework - Comments

1

Click anywhere in the document to add a comment. Select a  bubble to view comments.



1. **Click** anywhere to add a comment

2. **Add** name, email, comments type and comment

3. **Interact** with other survey participants by like/dislike and replying to comments

2

Comments Close

Your name
Diana Benitez

E-mail
diana@raimiassociates.com

Add Comment
I agree, but think we should do more.

I have read and agree to the [Terms & Conditions](#) and [Privacy Policy](#).

Comment Type
Suggestion

Add Comment

3

Comments Close

Diana Benitez Mar 12 2021 at 8:24PM **Suggestion**
I agree, but think we should do more.
reply 1 0

Lina Mar 12 2021 at 8:25PM **Suggestion**
No, this policy is more than enough for commercial areas.
reply 1 0

Upcoming Events and Next Steps

- **Thursday, August 12th** *Planning Commission Update*
- **Tuesday, August 17th** *City Council Update*



Thank you!

City of Palmdale

Phone

661-267-5200

Email

generalplan@cityofpalmdale.org