

Envision
PALMDALE 2045

Policy Framework Series Presentation

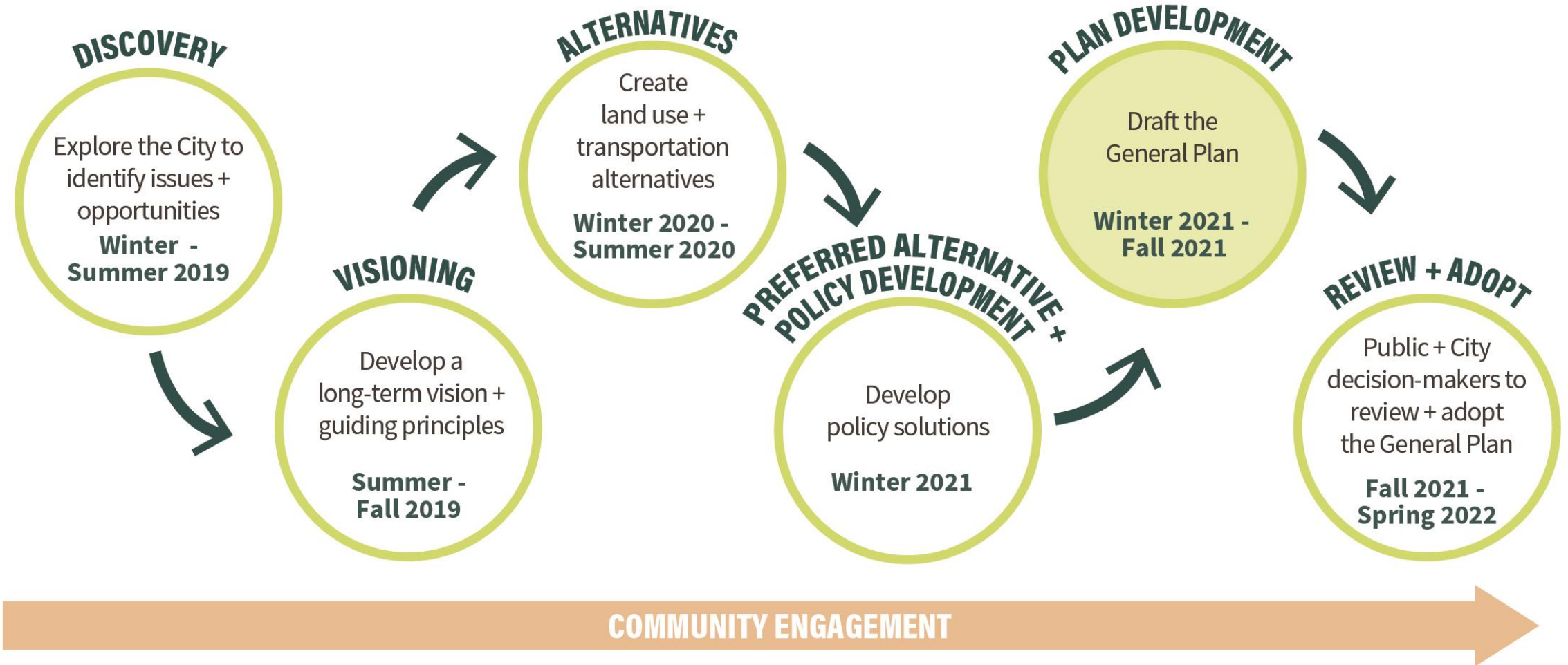
City Council | August 17, 2021

Overview

- Update on Palmdale2045
- Present overview of Policy Frameworks and community feedback
- Receive feedback on the draft policy frameworks



Palmdale 2045 Project Schedule



General Plan Overview

General Plan Requirements

Required Elements

- **Land Use**
- **Circulation**
- **Housing**
- Conservation*
- **Open Space****
- Noise
- **Safety**
- Air Quality
- **Environmental Justice**

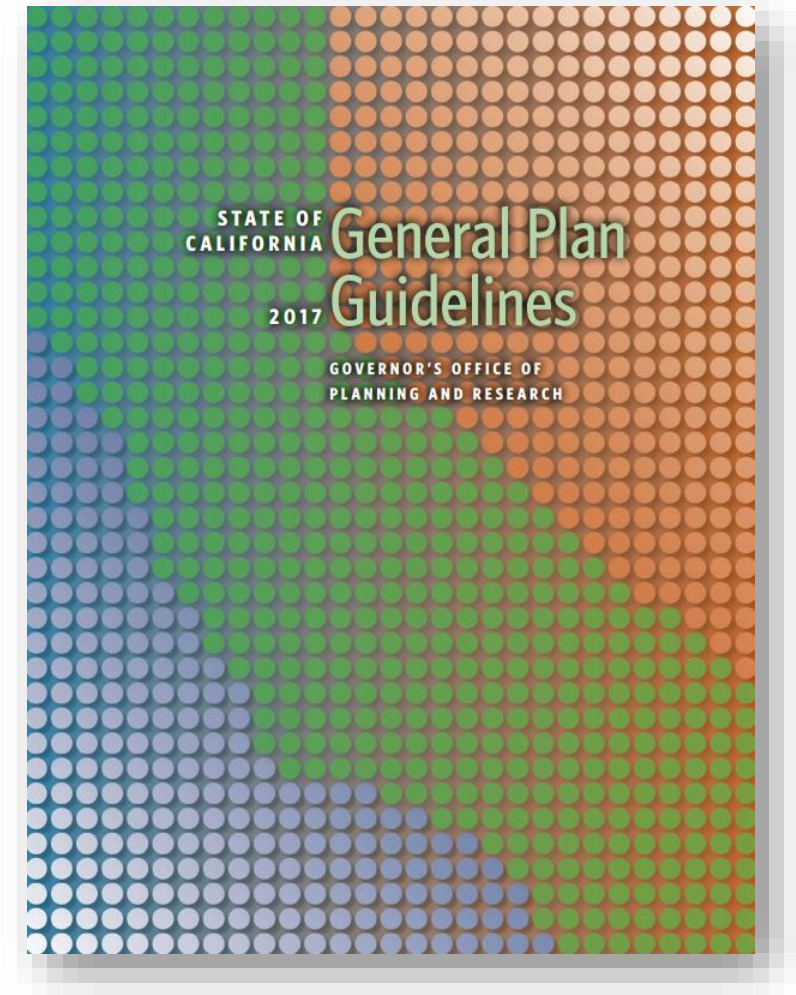
* Includes Cultural Resources

** Includes Parks and Recreation

Additional Considerations

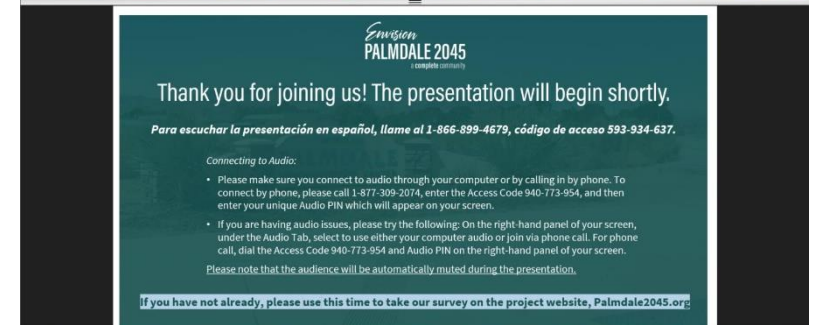
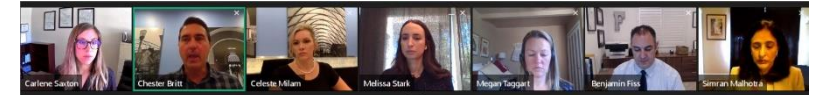
- **Community Design**
- **Equitable and Resilient Communities**
- **Healthy Communities**
- **Economic Development**
- **Climate Change**
- **Military Compatibility**

*Previously referred to as
“Military Readiness”*



Summary of Engagement to Date

- 2 in-person workshops
- 9 pop-up workshops
- 3 rounds of stakeholder focus groups (1 in person & 1 virtual)
- 2 live virtual presentations + Q&A sessions
- 3 online surveys
- 17 GPAC meetings (ongoing)
- 3 presentations to City Council
- 4 presentations to Planning Commission



Major Vision Themes



Unified + welcoming



Vibrant Downtown



Diverse, high-quality jobs



Resilient local economy



Safe + healthy community



Quality medical + mental healthcare



Housing options for all stages of life + ability



Quality + accessible education

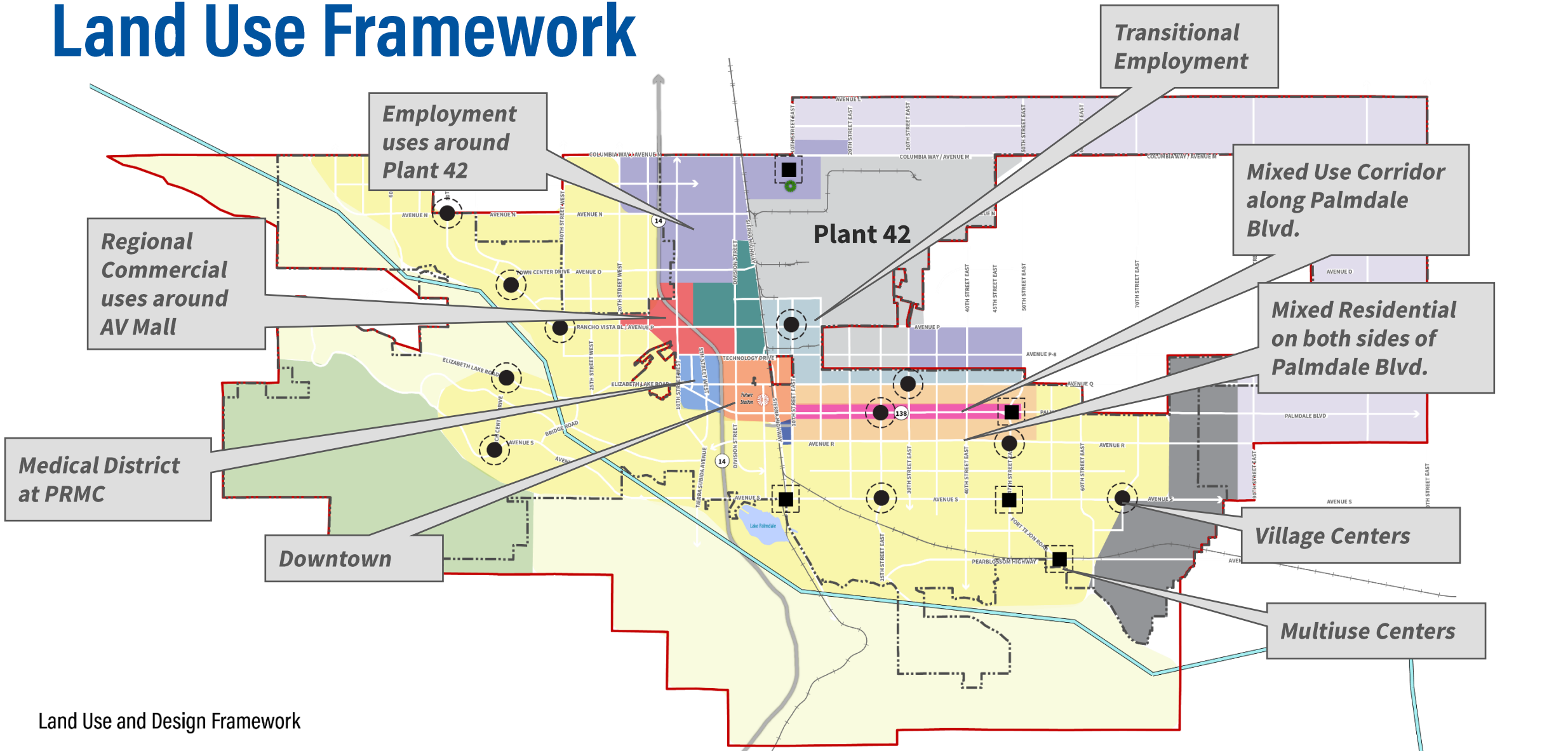


Preserve natural setting



Forefront of transportation Innovation

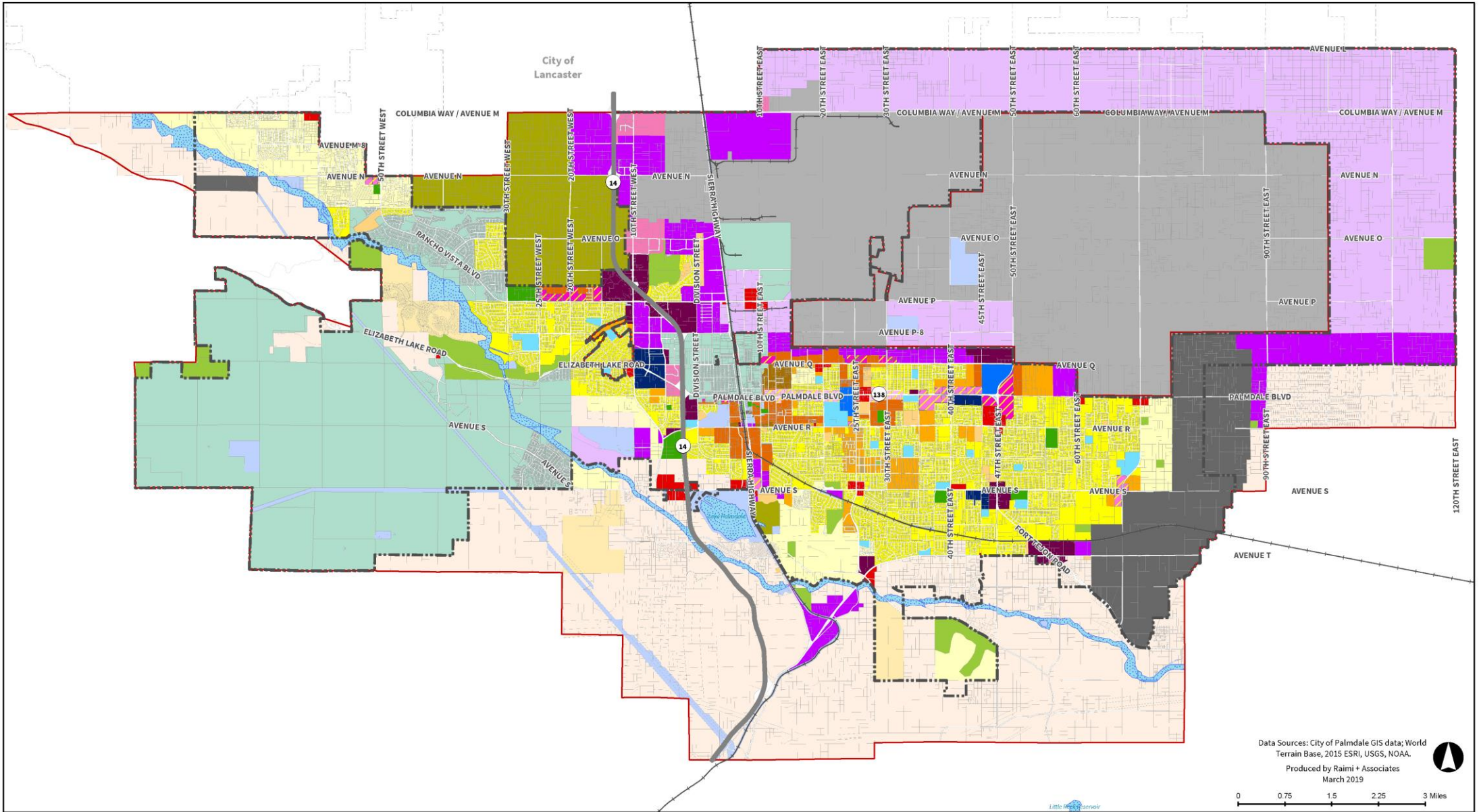
Land Use Framework



Land Use and Design Framework

- | | | | | | | | |
|---------------------|------------------------|------------------------|------------------|-------------------------|--------------------------|--------------------|----------------|
| City Boundary | Major Highway/Arterial | Mid Town District | Downtown | Plant 42 | Employment District | Civic District | Multi-Use Node |
| Sphere of Influence | Railroad | Existing Neighborhoods | Medical District | Transitional District | Future Employment | Open Space | Village Center |
| California Aqueduct | Transit Station | Future Neighborhoods | Mall District | Mixed Business District | Resource Extraction Area | Mixed-Use Corridor | |
| | Airport Terminal | | | | | | |

Preferred Land Use Plan



Residential Designations		Mixed Use		Commercial/Office/Other		Industrial		Public			
	Equestrian Residential		Residential Neighborhood 1		Mixed Use 1		Neighborhood Commercial		Employment Flex		Public Facility-School
	Low Density Residential		Residential Neighborhood 2		Mixed Use 2		Regional Commercial		Industrial		Public Facility-Civic
	Single Family Residential 1		Residential Neighborhood 3		Mixed Use 3		Visitor Commercial		Aerospace Industrial		Public Facility-Park
	Single Family Residential 2		Residential Neighborhood 4		Mixed Use 4		Specific Plan		Mineral Resource Extraction		Open Space
	Single Family Residential 3				Health and Wellness						
					Educational Flex						

Data Sources: City of Palmdale GIS data; World Terrain Base, 2015 ESRI, USGS, NOAA.
 Produced by Raimi + Associates
 March 2019

0 0.75 1.5 2.25 3 Miles

City Boundary

 Sphere of Influence

 Major Highway/Arterial

 Railroad

 Water Body/Aqueduct

Policy Frameworks

Military Compatibility Policy Framework

Introduction

The City of Palmdale has embarked on a comprehensive update to its General Plan, called “Envision Palmdale 2045: A Complete Community,” to create a forward-looking document that will serve as the blueprint for the City’s vision through the year 2045. The goals, policies, and actions in Palmdale 2045 will serve as a compass for decision-makers and will shape future plans and actions of the City. This revised policy document will replace the 1993 General Plan.

This Military Compatibility policy framework is an interim step in the General Plan Update process prior to drafting the element (or chapters). This framework highlights key outcomes and performance metrics related to military activity and includes a draft policy framework that includes goals, policies, and implementation activities. This policy framework was developed by compiling feedback from key stakeholders, community members, General Plan Advisory Committee members, Planning Commission, and City Council. This framework synthesizes critical issues and policy approaches by describing key strengths and opportunities, challenges and threats, and what we heard from the community.

Where We Are Now

The following are strengths, opportunities, challenges, and threats that have been identified by the planning team throughout the course of the General Plan update process, as well as input heard from community members, that have shaped the military compatibility policy framework.

Strengths. Palmdale is home to some of the most innovative research and development in the Aerospace industry. Air Force Plant 42 supplies high quality STEM jobs for the region and is one of the City’s largest employers.

Opportunities. Plant 42 brings weekly visitors to Palmdale. Several long-range major transportation improvements are planned, which will make travel to Palmdale faster and more efficient, opening the opportunity for further aerospace collaborations, local suppliers, and workers to travel to the City.

Policy Frameworks = An Interim Step

- These are initial, general ideas for policy direction
- This is not an exhaustive list of policies or measures but rather, ideas for review and reaction
- Additional policies + measures will be included in the General Plan

Policy Framework Topic Meetings

**Safety,
Infrastructure,
& Hazards**

June 17th

**Resilience,
Sustainability, &
Climate Change**

June 30th

**Land Use,
Mobility, and
Housing**

July 15th & 28th

**Economic
Development &
Military
Compatibility**

August 5th

**Health,
Environmental
Justice, Equity,
Parks, & Public
Facilities**

August 11th

Conservation

Open Space

Air Quality

**Cultural
Resources**

Noise

Meeting Outreach

- Digital press releases
 - Antelope Valley Press, Antelope Valley Times, and the Antelope Valley Daily News
- The Palmdale Minute
 - weekly video segment in English and Spanish
- E-blasts in English and Spanish
- Updates on Palmdale social media platforms
- Council announcements
- Auto mall billboard
- Workshop flyers were distributed to the following organizations and locations:
 - City Hall
 - SAVES
- Print advertisements were placed in Palmdale Connections Magazine



Meeting Organization

Context	<ul style="list-style-type: none">• Background on each topic• Key strengths, weaknesses, opportunities, threats• Direction from the community on each topic• Related existing plans and programs
Policy Overview	<ul style="list-style-type: none">• Desired outcomes• Metrics• Overview of goals• Overview of policies
Feedback	<ul style="list-style-type: none">• Question and answer• Breakout group discussions• Public comment• Review and comment on policy documents (Konveio)

Framework Structure

Performance Metrics

Data used to measure progress

Targets

Level of performance to measure implementation

Outcomes



Statement describing where we want to be in 2045

Goals

A general expression of community values and direction, expressed as ends

Policies + Measures

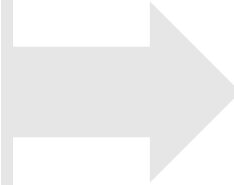
Policies: A specific statement that guides decision-making

Measures: An action, partnership, or program that carries out a policy

Land Use, Design and Housing Goals + Outcomes

Goals

- Complete neighborhoods and village centers
- Urban core infill
- Range of housing opportunities and types
- Transit-oriented community near High-Speed Rail Station
- Improved Economy with more jobs through Industrial/Office Uses
- Education and Health and Wellness Districts
- Pedestrian-oriented, human-scale, well-landscaped streets
- Activated Palmdale Boulevard
- Improved connectivity in existing neighborhoods
- Improved economy with more jobs through industrial/office uses and Plant 42 buffer
- Maintain Rural Character



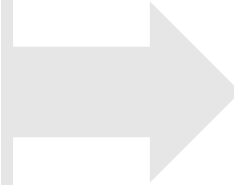
Outcomes

- Balanced jobs and housing growth
- Promote mixed income and affordable housing
- Walkable, complete, “20-minute” neighborhoods
- Transit-Oriented community around future station
- More housing options, especially downtown
- Expansion of Aerospace, light industrial, film and office uses

Mobility Goals + Outcomes

Goals

- Safe and comfortable travel for all modes, ages, and abilities
- Provide affordable, equitable, and efficient access to opportunities
- Foster a more active and vibrant downtown
- Accommodate future travel growth and existing demand
- Protect and reduce impacts to the environment
- Implement innovations and regional projects in line with City's vision
- Enhance quality of life and public health



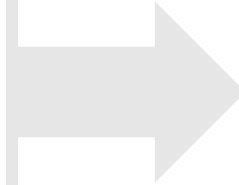
Outcomes

- Reduce severe injuries and fatal collisions
- More equitable and reliable access
- Increase walking, biking, and shared rides
- Reduce vehicle miles traveled (VMT)
- Increase quality of life and economic competitiveness

Economic Development Goals + Outcomes

Goals

- Attract diverse and high-quality job options
- Diversify housing options
- Provide high quality and accessible educational opportunities
- Activate a vibrant downtown
- Remain at the forefront of transportation innovation
- Identify support and resources to incentivize development



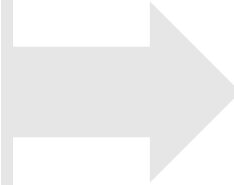
Outcomes

- High standard of living for workers with diverse skill sets
- Safe and affordable housing for residents and workers
- Educational pathways for residents
- Build a Downtown core where residents and businesses can participate and celebrate in the City's economic prosperity
- Transportation to economic opportunities & resources
- New economic development opportunities to diversify the tax base

Military Compatibility Goals + Outcomes

Goals

- Continued growth of Plant 42 operations
- Compatible future adjacent land uses
- Avoid incompatible development
- Prevent residential noise complaints related to Plant 42
- New development within impact areas to comply with regulations
- Coordinated future development and infrastructure improvements
- Enhance communications




Outcomes

- Preserve and enhance Plant 42's mission
- Increase jobs in aerospace and supporting industries

Parks, and Recreation Goals + Outcomes

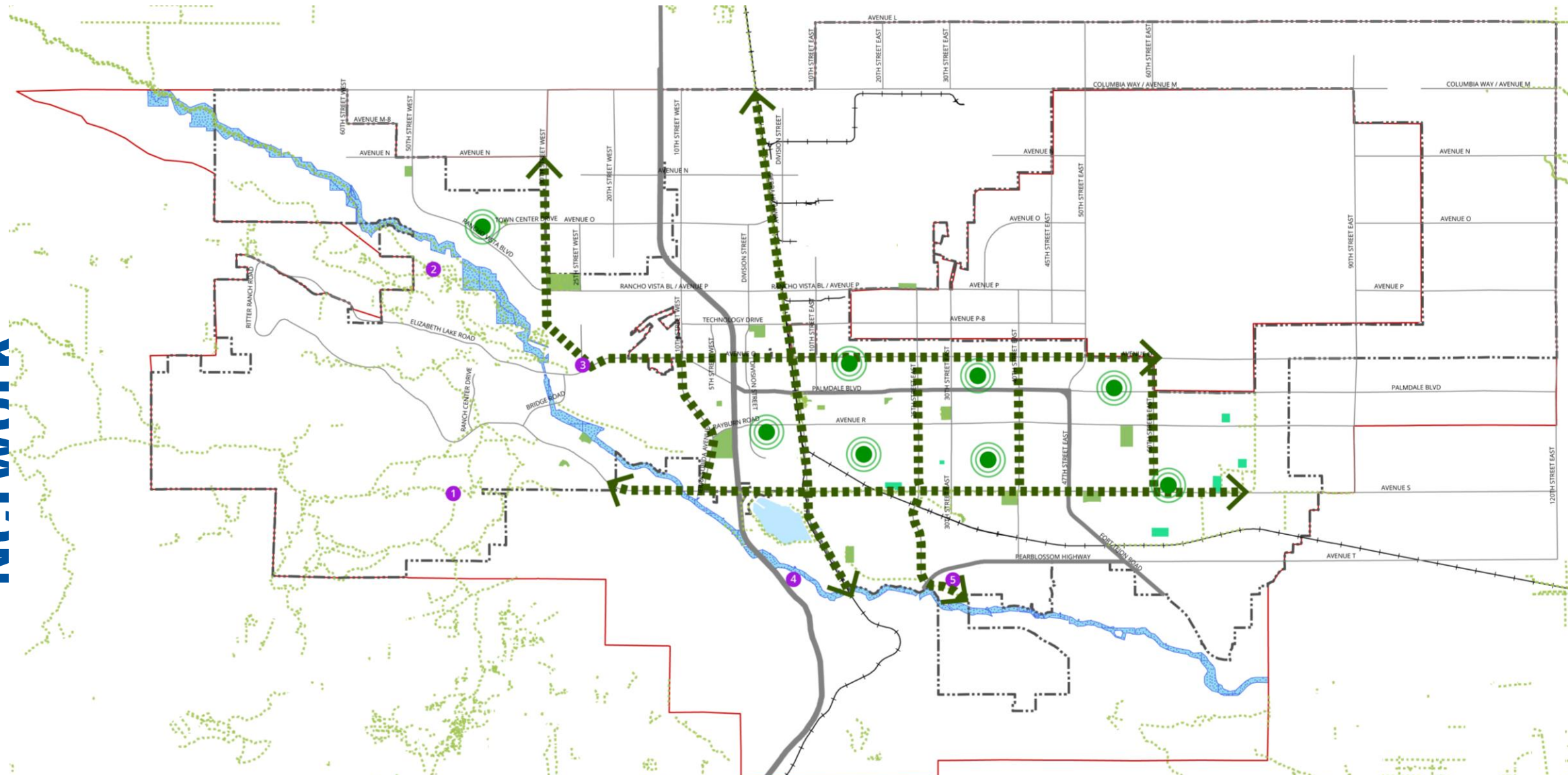
Goals

- Parks and recreation facilities to meet existing and future resident needs
 - Passive and active open space
 - Multi-use trails network
 - Funding for parks development
 - Acquire more parkland
 - Safe, fun programming for all ages and diverse cultures
- 

Outcomes

- Connectivity
- New parkland
- Partnerships
- Upgrades to existing facilities

Future Parks and Trails Network



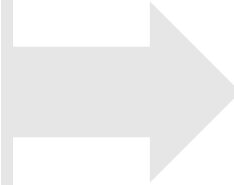
Future Parks, Recreation, and Trails

- | | | | |
|---------------------|---------------------|----------------------------------|---|
| Trails | Water Body | Key Access Points to Parks & Rec | Trailheads |
| California Aqueduct | Existing Parks | Future Park Priority Area | 1 - Ritter Ranch Park |
| Highways | Future Parks | | 2 - Joshua Hills Trail (not currently accessible) |
| Major Arterials | City Boundary | | 3 - Amargosa Creek Trail |
| Railroads | Sphere of Influence | | 4 - Palmdale Hills Trail |
| | | | 5 - Barrel Springs Trail |

Health and Equity Goals + Outcomes

Goals

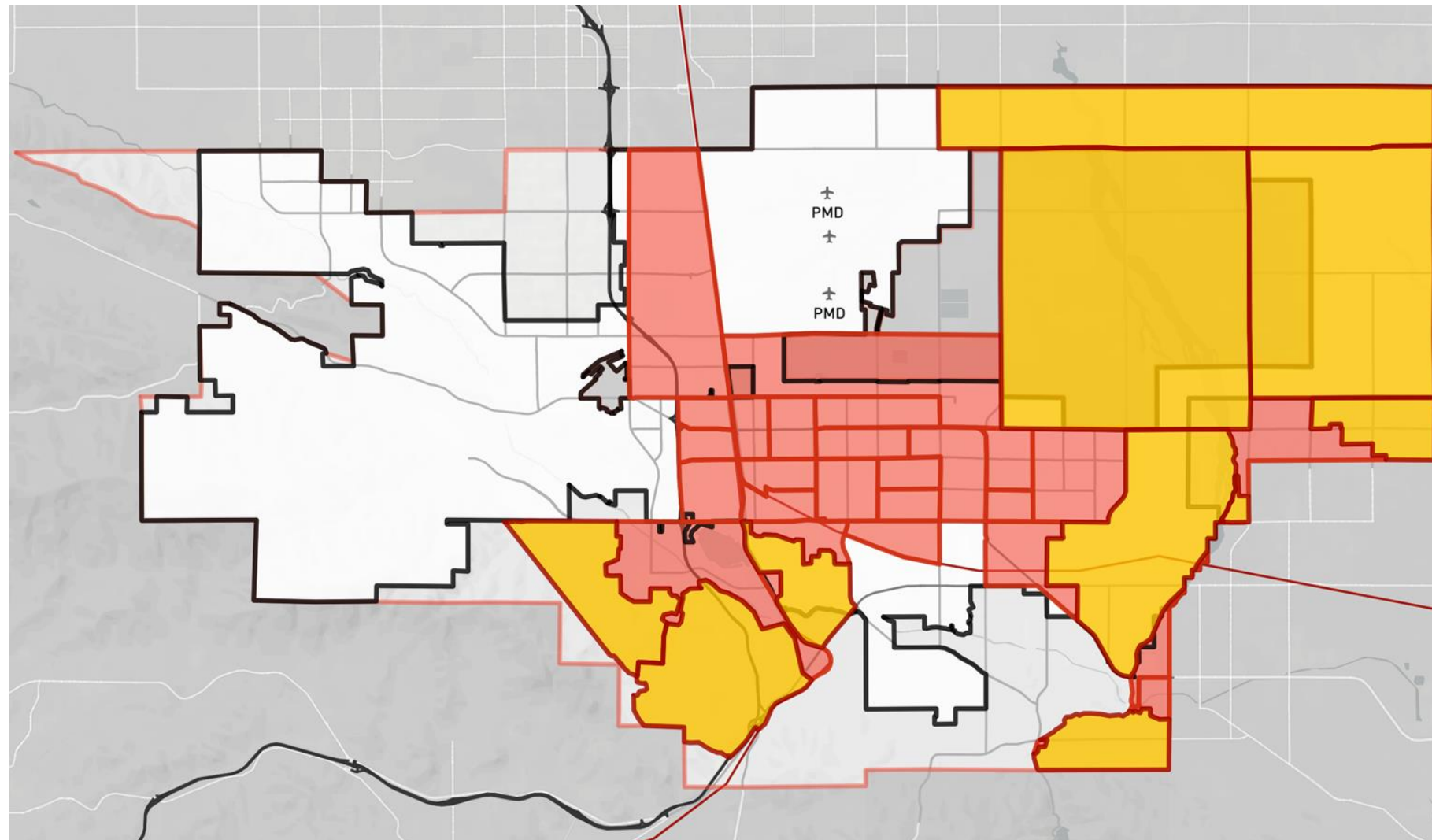
- Encourage construction and maintenance of safe & sanitary housing
- Promote access to high-quality health care
- Provide range of exercise opportunities
- Promote access to affordable, quality produce
- Improve air quality
- Provide quality educational opportunities
- Improve public safety





Outcomes

- Expanded economic opportunities for existing residents
- Increase multifamily housing units
- Improved opportunities for physical activity
- Improved air quality
- Strengthened access to healthy food

Disadvantaged Communities



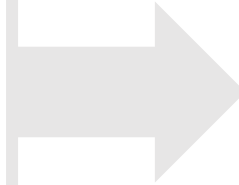
Legend

-  City Limits
-  Sphere of Influence
-  Railroads
-  Freeways/Highways
-  Major Streets
-  Disadvantaged Communities
-  Vacant Areas

Resilience, Sustainability and Climate Goals + Outcomes

Goals

- Reduced emissions from transportation, increase in walking, biking, and using transit
- Proactively advance community resilience
- Fossil fuel free energy system
- Green and decarbonized buildings
- Secure and safe water supply



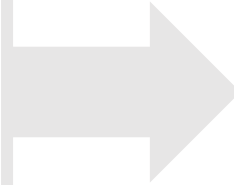
Outcomes

- Reduce GHG emissions
- Restore and enhance ecosystems and natural open space
- Protect community from impacts of climate and other hazards
- Secure, clean water supply

Safety, Infrastructure, and Hazards Goals + Outcomes

Goals

- Self-sufficient in an emergency
- Minimize wildfire hazards
- Minimize flooding hazards
- Minimize crime
- Safe evacuation of residents



Outcomes

- Wildfire risk mitigation
- Mitigation of impacts from geologic hazards
- Minimize impacts of flooding
- Adaptable crime prevention
- Adequate emergency evacuation

GPAC + Community Feedback on Policy Frameworks

Highlights

Safety

- Top safety concern is crime/crime prevention
- Concerns over future wildfires, communication during an emergency

Climate

- Increase use of renewable energy
- Desire to mitigate future power outages
- Educational resources for graywater
- Trash sorting should be more widely available
- Forest management planning

Land Use, Design, and Housing

- Higher education should be key outcome
- Support 20-minute neighborhoods
- Expand broadband internet access
- Disperse affordable housing across the City
- Provide care and services to homeless populations and develop a shelter
- Desire for more parks, trees, and greenspace
- Maintain natural areas and open space
- City funded infrastructure improvements to support development

GPAC + Community Feedback on Policy Frameworks

Highlights

Mobility

- Focus on youth supportive facilities
- Evaluate speeds as it relates to safety
- Consider CicLAvia events on Avenue Q
- Improve street lighting, specifically on Palmdale Boulevard
- Build bicycle facilities that are comfortable, so they're utilized
- Do not detract from vehicle circulation
- Install sidewalks
- Explore truck routes
- Consider quiet zones for railway intersections

Economic Development and Military Compatibility

- Preserve Plant 42 mission
- Diversify economic base to include private aerospace, film, and technology industries
- Consider environmental tourism as an economic opportunity
- Diversify housing and affordable housing options
- Promote alternative transportation connections from neighborhoods to job centers
- Provide land assembly in the Downtown area

GPAC + Community Feedback on Policy Frameworks

Highlights

Health & Equity/Parks & Recreation

- Collaborate with school districts regarding mental health education
- Consider educational campaign re. healthy foods
- Consider new City commissions for youth, seniors, and parks and recreation
- Plant more trees and consider appropriate criteria
- Provide support to community groups in Palmdale
- Prioritize what the City can do with limited funds
- Address concentration of certain uses – alcohol sales

Planning Commission Feedback on Policy Frameworks

Highlights

- Appreciate thoroughness of the frameworks
- Pleased with the progress
- Appreciate the GPAC and community involvement
- Health and Wellness District – allows medical, supportive, assisted living, supportive retail, and hotels
- Good to see youth-related goals and policies addressed



Questions?

Upcoming Events and Next Steps



Thank you!

City of Palmdale

Phone

661-267-5200

Email

generalplan@cityofpalmdale.org