

Envision PALMDALE 2045

Joint GPAC Meeting #12/Community Workshop

June 17, 2021 | Policy Frameworks Series: Safety, Infrastructure,
and Hazards

Please be advised that this meeting is being recorded

Agenda

- Welcome & GPAC Roll Call
- Pledge of Allegiance
- GPAC Meeting #11 Minutes approval
- Policy Frameworks Background
- Topic Context
- Group Discussion
- Public comment
- Next Steps

Please be advised that this meeting is being recorded



Introductions

- **Carlene Saxton**, Director of Economic & Community Development
- **Megan Taggart**, Planning Manager
- **Benjamin Fiss**, Senior Planner
- **Simran Malhotra**, Principal
- **Melissa Stark**, Senior Planner
- **Lexi Journey**, Senior Environmental Planner
- **Andrew Hatt**, Sustainability Planner

Roll Call – GPAC Members

- **Tony Avila**
- **Juan Blanco**
- **Lourdes T. Everett**
- **Colby Estes**
- **Laura Gordon**
- **Theresa Hambro**
- **Matthew Harris**
- **Aurora Hernandez**
- **Pat Hunt**
- **Sheri Kaneshiro**
- **Teri Lamping**
- **Deborah Rutkowski-Hines**
- **Jason Zink**

Pledge of Allegiance



*I pledge allegiance
to the flag of the
United States of
America*

*and to the
Republic for which
it stands, one
Nation under God,
indivisible,
with liberty and
justice for all.*

GPAC Meeting #11 Minutes

- Motion to approve or deny?

POLL

What You Need to Know: Questions and Comments

Questions and Comments

- We will be pausing during the presentation to answer questions
- There will be additional opportunity after the presentation to provide comments
- Public comment will take place at the end of the meeting
- Send additional questions or comments to **generalplan@cityofpalmdale.org**

POLL

General Plan Overview

What is a General Plan?

“Vision about how a community will grow, reflecting community priorities and values while shaping the future.”

- Long-term policy document to **guide the future actions** in Palmdale
- Establishes the **City’s vision** for the next 25 years
- Preserves and enhances **community strengths**
- Addresses a number of **topics of concern**
- Enables the community to come together to develop a **shared vision for the future**

What is a General Plan?

A General Plan is like a road map for the future of Palmdale.



1



General Plans describe the community’s vision and identifies strategies for managing preservation and change.



The State of California requires every city and county to have a General Plan to guide growth.

2

3

General Plans typically include goals, policies, implementation strategies and supporting graphics.



These components work together to convey a long-term vision that will guide local decision making.



4

5

The General Plan also plays an important role in regulating land use. Its policies and maps form the foundation for City ordinances, guidelines and plans.



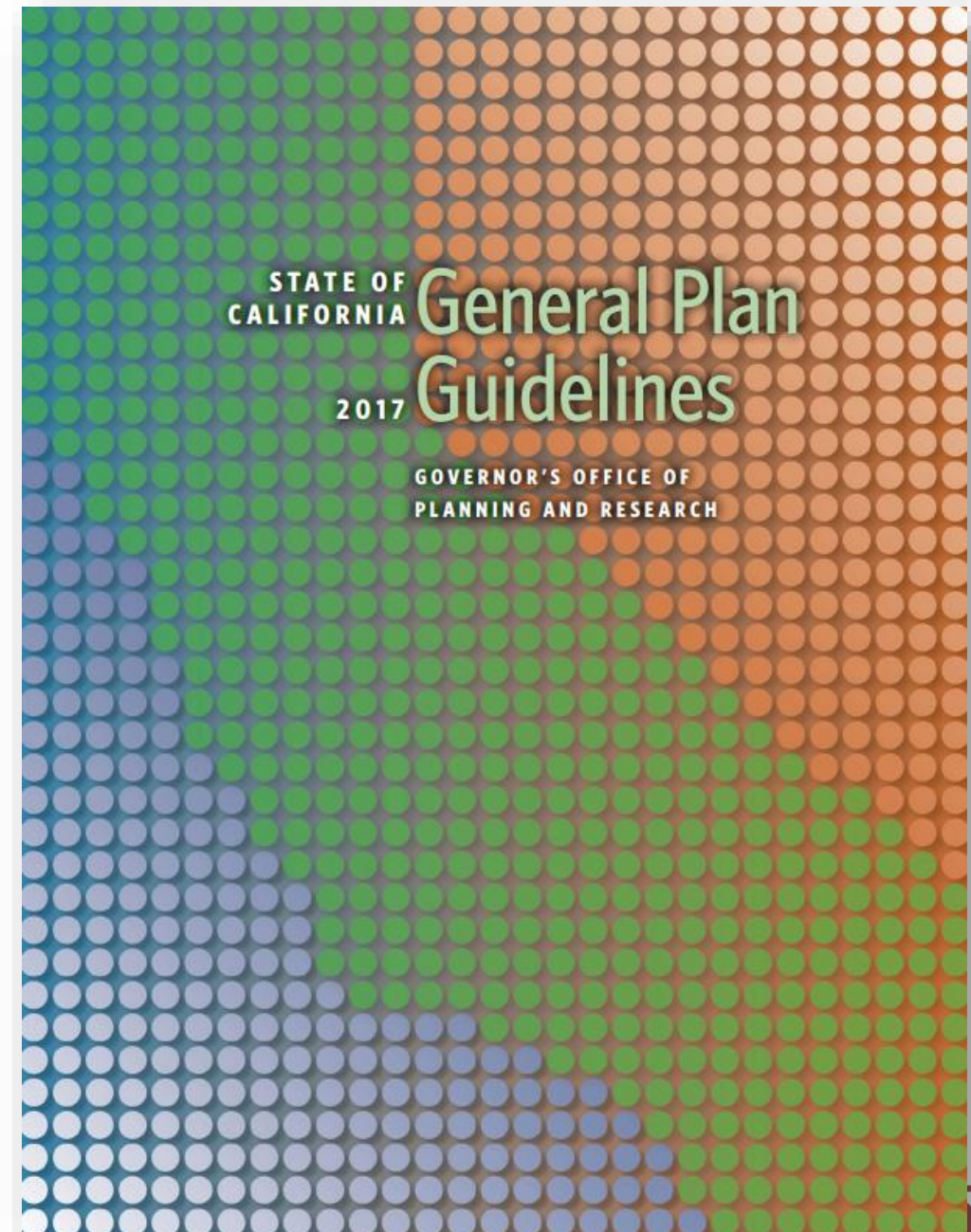
General Plan Requirements

Required Elements

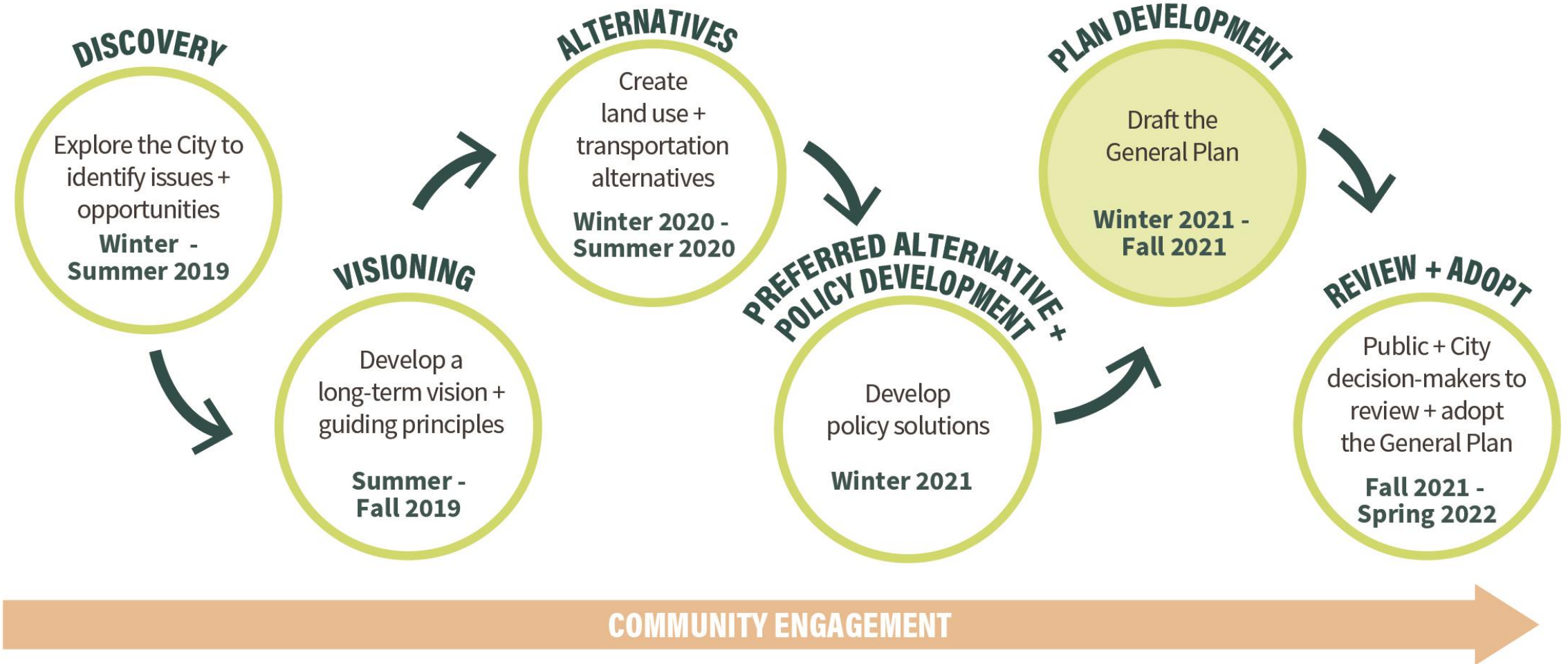
- Land Use
- Circulation
- Housing
- Conservation
- Open Space
- Noise
- **Safety**
- Air Quality
- Environmental Justice

Additional Considerations

- Community Design
- Equitable and Resilient Communities
- Healthy Communities
- Economic Development
- Climate Change
- Military Readiness

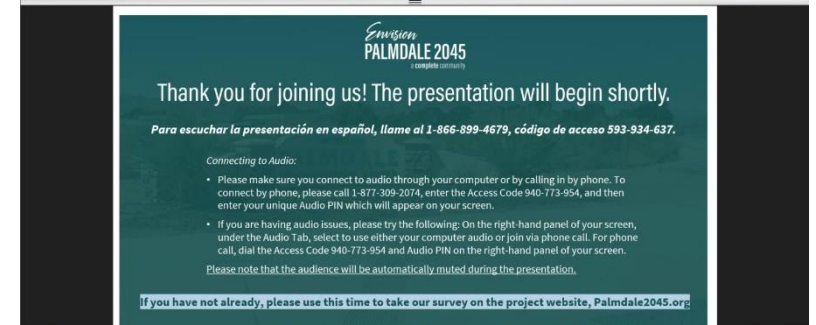
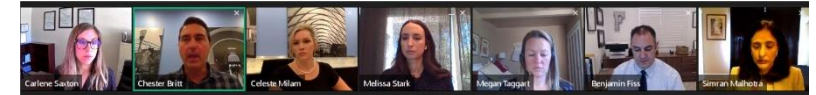
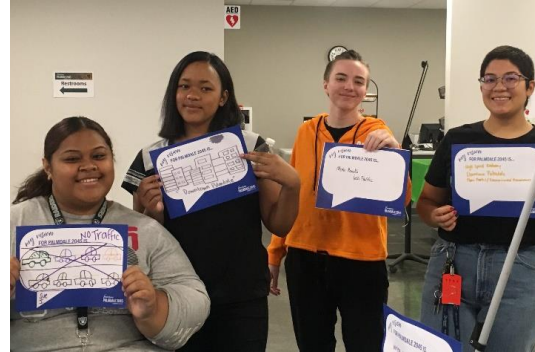


Palmdale 2045 Project Schedule



Summary of Engagement to Date

- 2 in-person workshops
- 9 pop-up workshops
- 3 rounds of stakeholder focus groups (1 in person & 1 virtual)
- 2 live virtual presentations + Q&A sessions
- 3 online surveys
- 11 GPAC meetings (ongoing)
- 3 presentations to City Council
- 4 presentations to Planning Commission



Major Vision Themes



Unified + welcoming



Vibrant Downtown



Diverse, high-quality jobs



Resilient local economy



Safe + healthy community



Quality medical + mental healthcare



Housing options for all stages of life + ability



Quality + accessible education

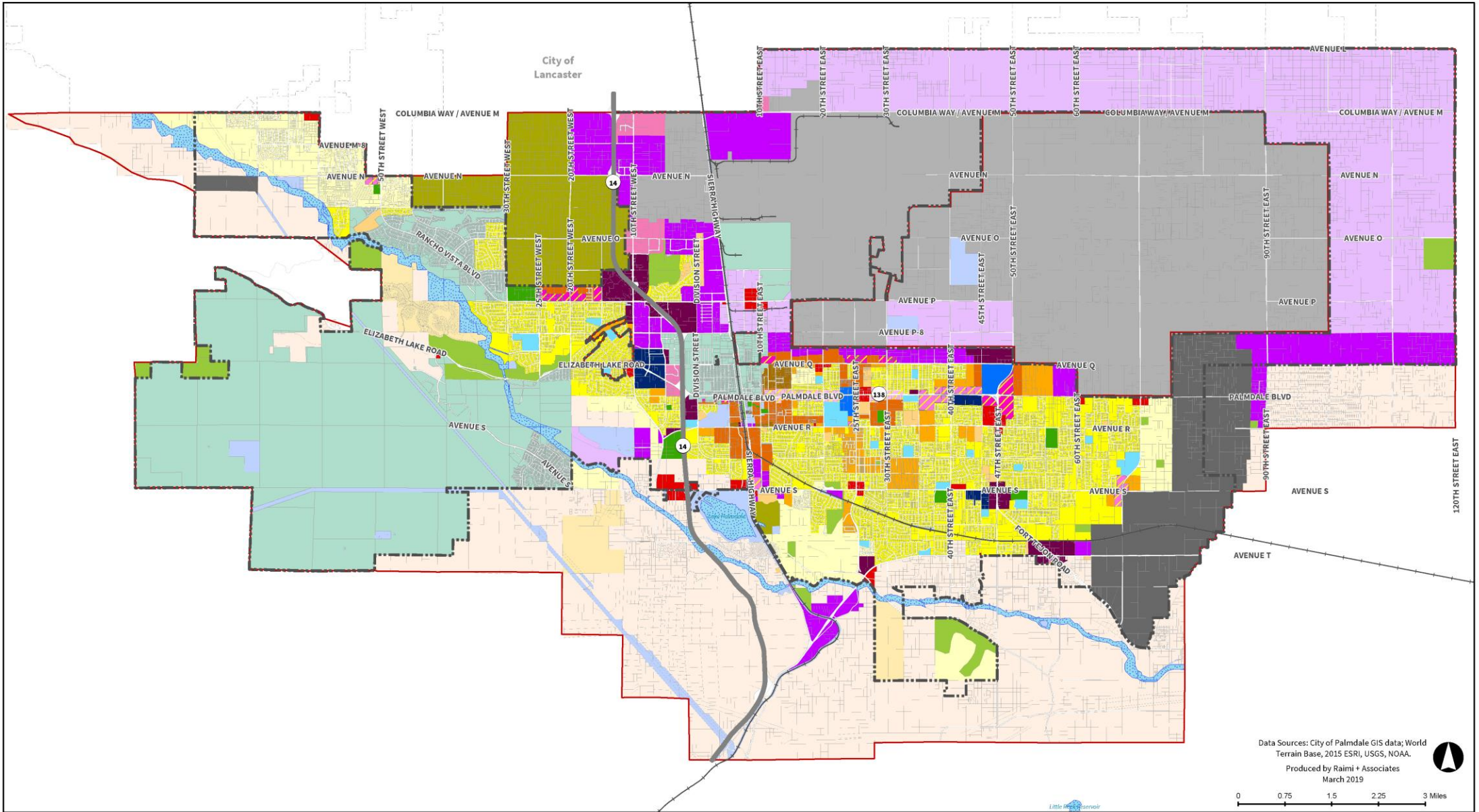


Preserve natural setting



Forefront of transportation Innovation

Preferred Land Use Plan



Residential Designations		Mixed Use		Commercial/Office/Other		Industrial		Public			
	Equestrian Residential		Residential Neighborhood 1		Mixed Use 1		Neighborhood Commercial		Employment Flex		Public Facility-School
	Low Density Residential		Residential Neighborhood 2		Mixed Use 2		Regional Commercial		Industrial		Public Facility-Civic
	Single Family Residential 1		Residential Neighborhood 3		Mixed Use 3		Visitor Commercial		Aerospace Industrial		Public Facility-Park
	Single Family Residential 2		Residential Neighborhood 4		Mixed Use 4		Specific Plan		Mineral Resource Extraction		Open Space
	Single Family Residential 3		Health and Wellness		Educational Flex						

Data Sources: City of Palmdale GIS data; World Terrain Base, 2015 ESRI, USGS, NOAA.
 Produced by Raimi + Associates
 March 2019

0 0.75 1.5 2.25 3 Miles

City Boundary
 Sphere of Influence
 Major Highway/Arterial
 Railroad
 Water Body/Aqueduct

What are policy frameworks? And what do they include?

- Major topics that make up Elements of the General Plan
- An interim step in developing General Plan Elements
- An **opportunity for community input** on development of goals and policies



What is a Safety Element?

- Protect community from unreasonable risk associated with various hazards
 - Seismic, Landslides, wildland and urban fires, flooding, and other geologic hazards
- Addresses:
 - Evacuation routes & emergency response
 - Military installations
 - Peak load water supply
 - Public safety
 - Climate change
 - Hazardous materials



Questions?

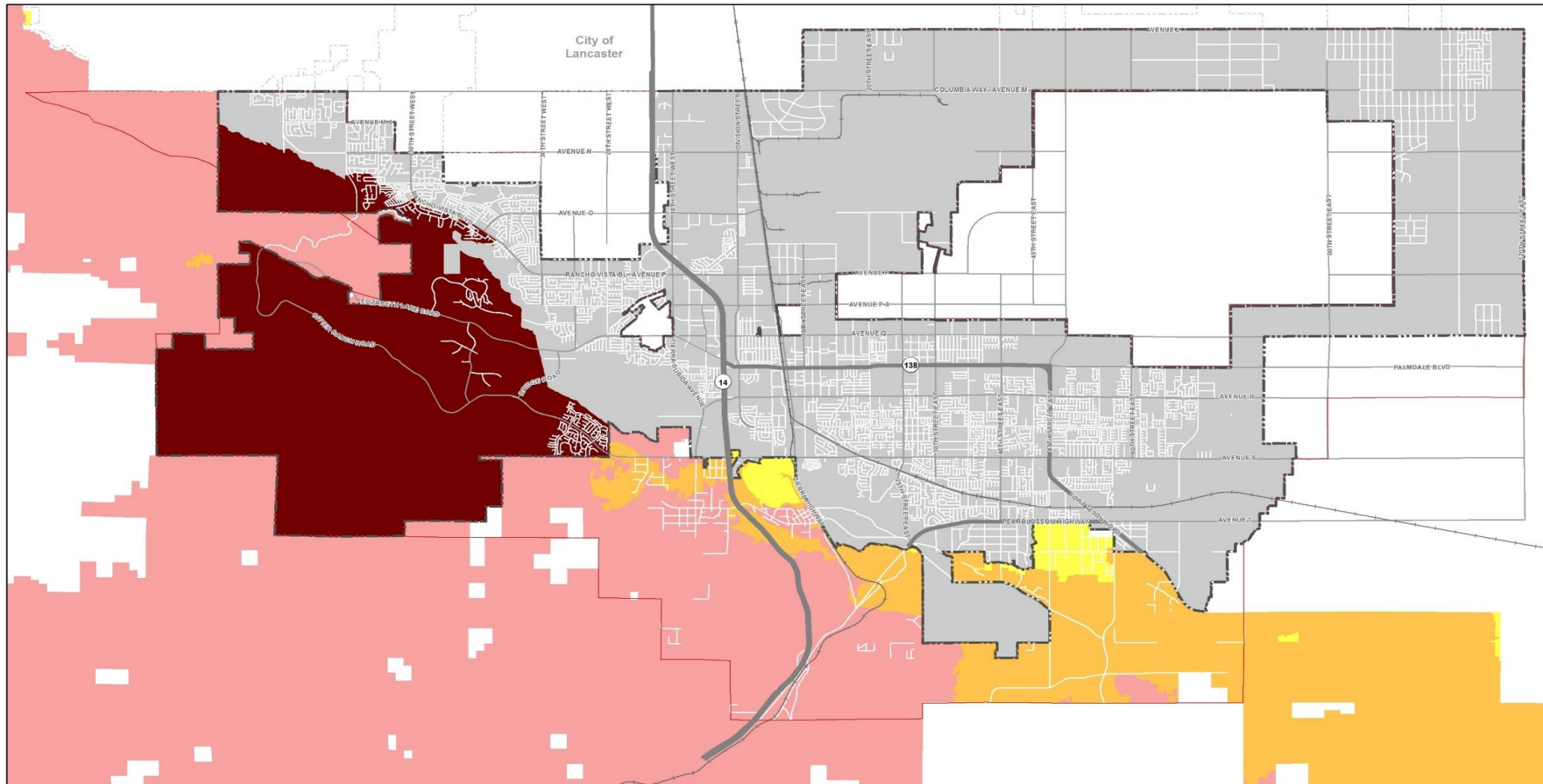


Existing Setting

Wildfire

- Western Foothills subject to wildfire hazards
 - Exposure increases with Urban-wildland interface
 - General Plan Update will not increase development potential in this area
- New development subject to LA County Fire Department and CalFire wildfire prevention and protection standards
- Climate change expected to increase wildfire risks
 - Assessed in Climate Action Plan (or Climate Change Element), per requirements of SB 379

Wildfire Hazard Zones



Fire Hazard Zones

- Moderate, State Responsibility Zone
- High, State Responsibility Zone
- Very High, State Responsibility Zone
- Very High, Local Responsibility Zone
- City of Palmdale Boundary
- Sphere of Influence
- Other City Boundary
- Major Highway/Arterial
- Railroad



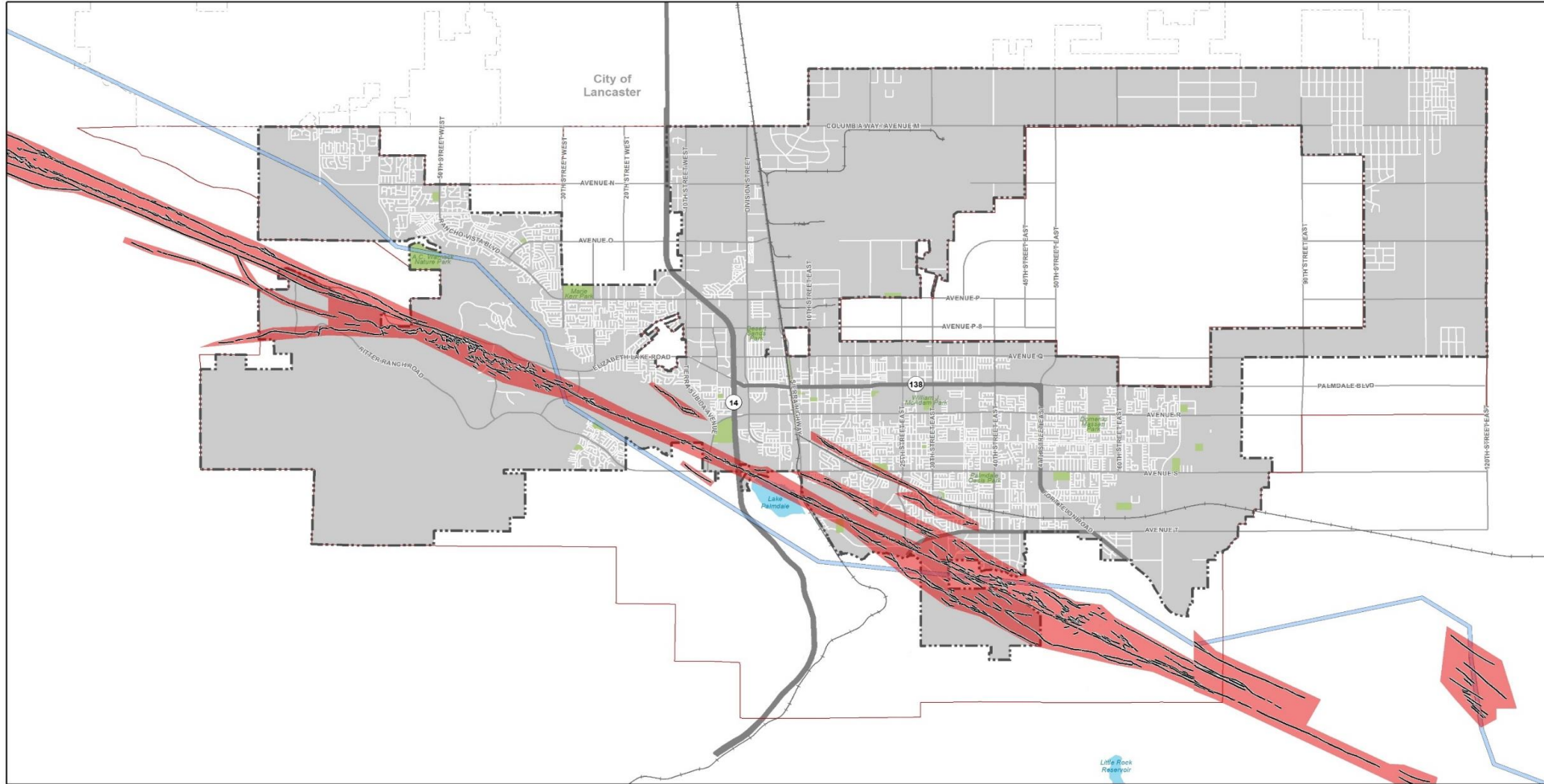
Data Sources: City of Palmdale GIS data; CAL FIRE. 2012.

Produced by Rincon Consultants, Inc.
June 2019











Natural Hazards

- Subject to variety of geologic hazards
- San Andreas Fault Zone
 - Groundshaking, liquefaction, and landslides
 - Proposed growth areas and potential land use changes are generally outside of these types of hazard zones

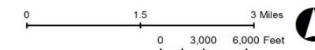
Fault Traces and Hazard Zones



Faults

-  Fault
-  Fault Zone
-  City of Palmdale Boundary
-  Sphere of Influence
-  Other City Boundary
-  California Aqueduct
-  Major Highway/Arterial
-  Railroad
-  Park
-  Water Body

Palmdale General Plan Update

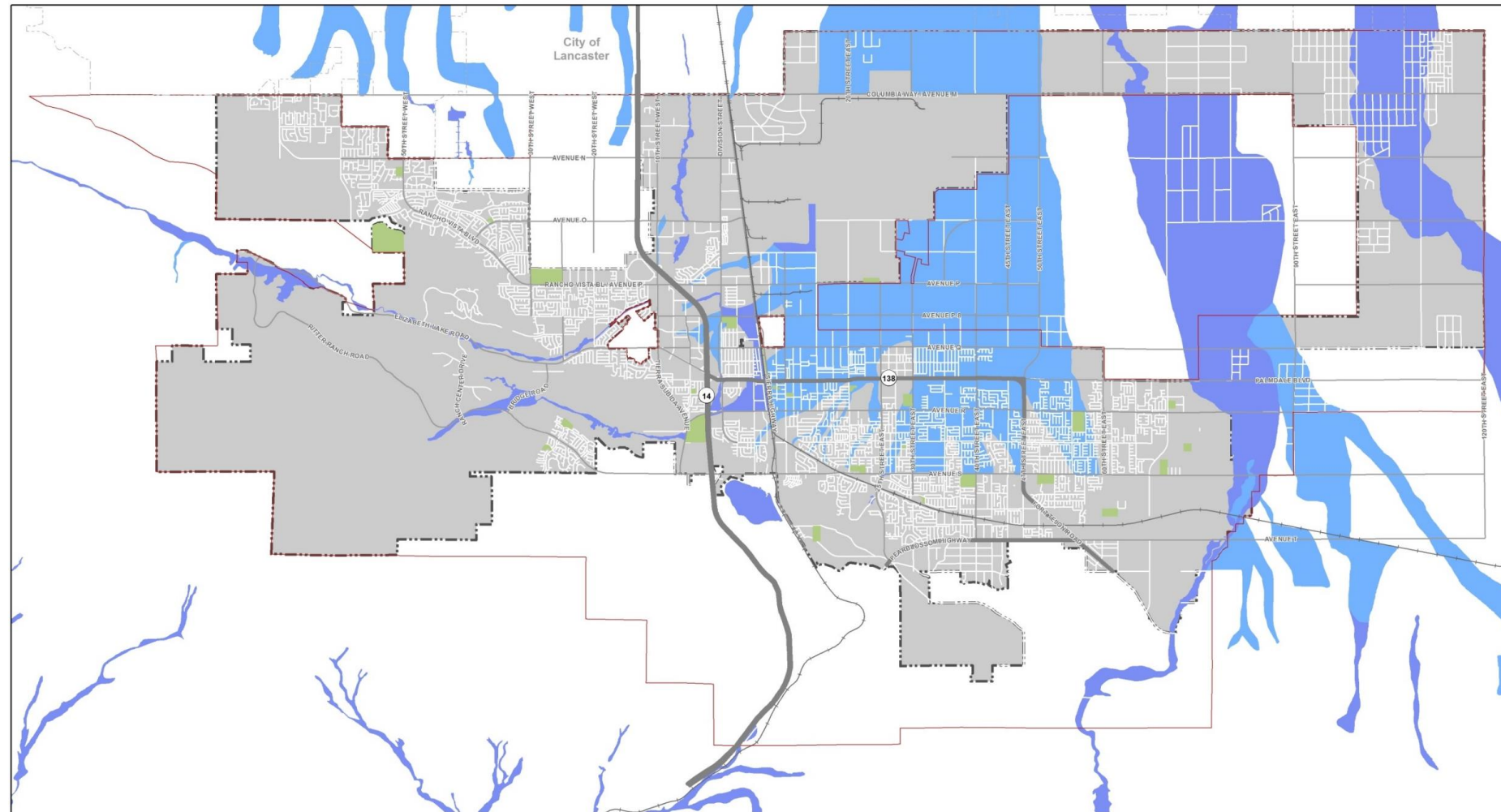


Data Sources: City of Palmdale GIS data,
California Geological Survey, 1979, USGS.
Produced by Rincon Consultants, Inc.
June 2019

Infrastructure

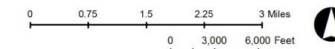
- 100-year flood zone
 - State Route 14 and Sierra Highway
 - Existing City regulations limit exposure
 - FEMA coordination and additional measures
- Emergency facilities
 - Sheriff station
 - Five LA County Fire Department stations

Flood Hazard Zones



Flood Hazard Areas

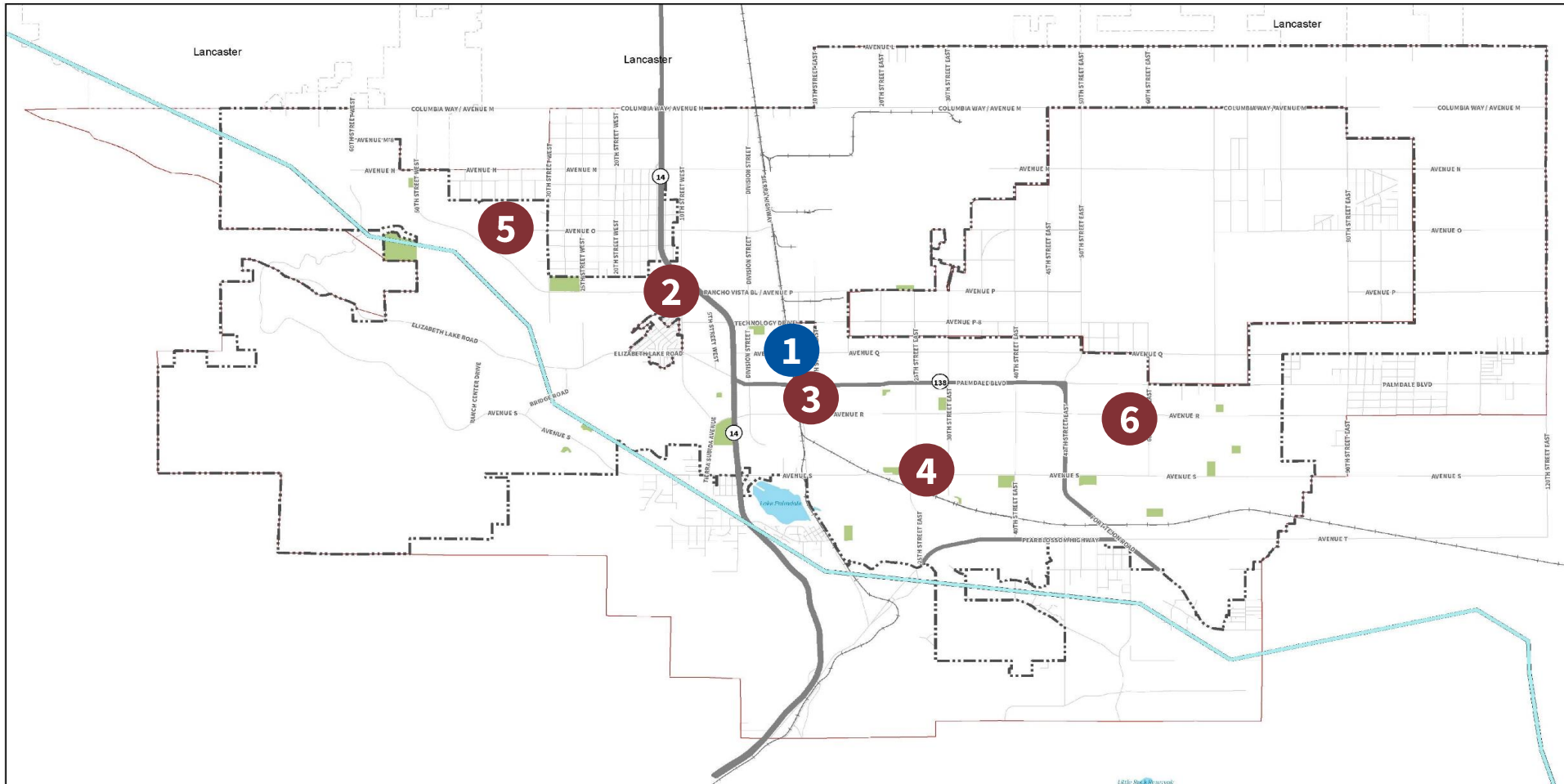
- FEMA Flood Zone A (Areas of 100-year flooding)
- FEMA Flood Zone X500 (Areas of 500-year flooding)
- City of Palmdale Boundary
- Sphere of Influence
- Other City Boundary
- Park
- Major Highway/Arterial
- Railroad



Data Sources: City of Palmdale GIS data; FEMA, 2019.

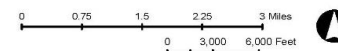
Produced by Rincon Consultants, Inc.
June 2019

Emergency Facilities



Emergency Facilities

- City Boundary
- Sphere of Influence
- California Aqueduct
- Major Highway/Arterial
- Railroad
- Fire Station
- Sheriff Station



Data Sources: City of Palmdale GIS data;
World Terrain Base, 2015 ESRI, USGS, NOAA.
Produced by Raimi + Associates
May 2019

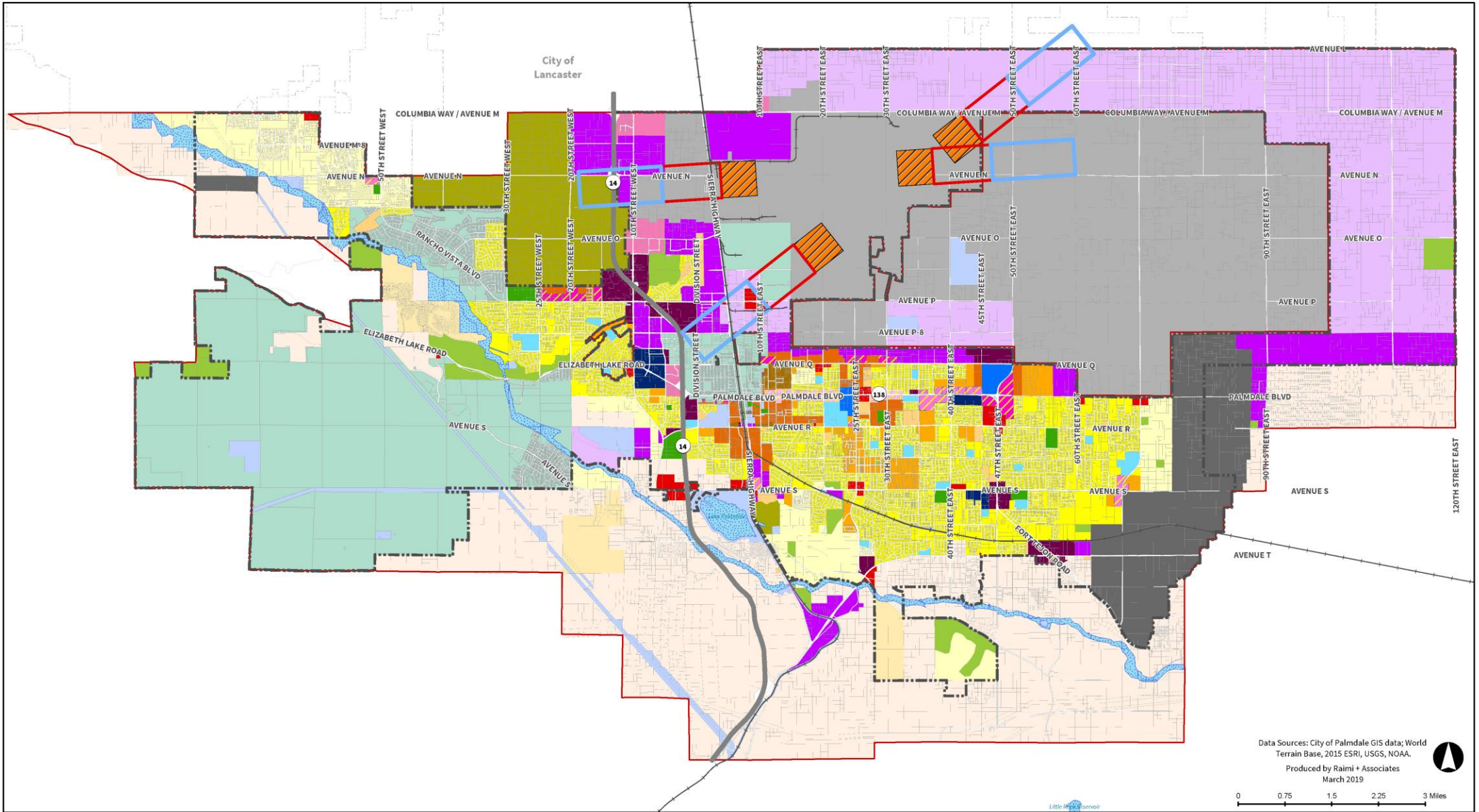
Crime

- Palmdale Public Security Officers, Community Service Officers, and Park Watch
- LA County Sheriff's Office
- Crime rates are declining in Palmdale
- Community has expressed concerns about safety
 - Pandemic implications on crime are unknown

Airport Safety

- Potential aircraft accidents from Air Force Plant 42
- New development must be consistent with Accident Potential Zones
- Building locations that promote clear corridors for pilots
- Consider redevelopment of incompatible uses

AICUZ OVERLAY ON PREFERRED PLAN



Residential Designations		Mixed Use		Commercial/Office/Other		Industrial		Public		Airport Zones		Legend			
	Equestrian Residential		Residential Neighborhood 1		Mixed Use 1		Neighborhood Commercial		Employment Flex		Public Facility-School		Clear Zone		City Boundary
	Low Density Residential		Residential Neighborhood 2		Mixed Use 2		Regional Commercial		Industrial		Public Facility-Civic		APZ I		Sphere of Influence
	Single Family Residential 1		Residential Neighborhood 3		Mixed Use 3		Visitor Commercial		Aerospace Industrial		Public Facility-Park		APZ II		Major Highway/Arterial
	Single Family Residential 2		Residential Neighborhood 4		Mixed Use 4		Specific Plan		Mineral Resource Extraction		Open Space		Railroad		Water Body/Aqueduct
	Single Family Residential 3				Health and Wellness										
					Educational Flex										

Data Sources: City of Palmdale GIS data; World Terrain Base, 2015 ESRI, USGS, NOAA.
 Produced by Raimi + Associates
 March 2019

0 0.75 1.5 2.25 3 Miles

Other Hazards To Be Addressed in the Safety Element

Slope instability
(mudslides and
landslides)

Drought

Dam failure

Hazardous
Materials

Climate
Vulnerability*

* To be discussed on June 30th at the Sustainability, Climate and Resilience meeting

Existing Plans & Programs

Existing Plans and Programs

- Existing General Plan Safety Element
- Existing General Plan Public Services Element
- Emergency Operations Plan
- Local Hazard Mitigation Plan (*currently being updated*)
- Palmdale Municipal Code
 - Palmdale Hillside Management Ordinance
 - Palmdale Building Code

Feedback from Community Engagement

- Need to actively plan for next earthquake – develop an Earthquake Plan
- Address perceived crime
- Address crime and safety concerns especially at specific locations
 - Palmdale Transportation Center
- Increase law enforcement capacity

POLL

Questions?

Policy Framework

Safety Policy Framework

Introduction

The City of Palmdale has embarked on a comprehensive update to its General Plan, called “Envision Palmdale 2045: A Complete Community,” to create a forward-looking document that will serve as the blueprint for the City’s vision through the year 2045. The goals, policies, and actions in Palmdale 2045 will serve as a compass for decision-makers and will shape future plans and actions of the City. This revised policy document will replace the 1993 General Plan.

This policy framework is an interim step in the General Plan Update process prior to drafting the Safety Element (or chapter). This framework highlights key outcomes and performance metrics related to safety and includes a draft policy framework that includes goals and policies. This policy framework was developed by compiling feedback from community members, General Plan Advisory Committee members, Planning Commission, and City Council. This framework synthesizes critical issues and policy approaches by describing key strengths and opportunities, challenges, and threats, and what we heard from the community.

What is the Safety Element?

The purpose of general plan safety elements is to protect the community from any unreasonable risks associated with the effects of a broad range of hazards including:

- Seismic hazards, including liquefaction, subsidence, and seismically induced surface rupture, ground shaking, ground failure, seiche, and dam failure;
- Slope instability, including mudslides and landslides;
- Other geologic hazards;
- Wildland and urban fires; and
- Flooding, including dam, levee, and floodwall failure.

Safety elements should also address evacuation routes, military installations, peak load water supply requirements, and minimum road widths and clearances around structures, as those items relate to identified fire and geologic hazards. Additional issues indirectly related to public safety

Policy Frameworks = An Interim Step

- These are initial, general ideas for policy direction
- This is not an exhaustive list of policies or measures but rather, ideas we want you to review and react to
- Additional policies + measures will be included in the General Plan

Framework Structure

Performance Metrics

Data used to measure progress

Targets

Level of performance to measure implementation

Outcomes



Statement describing where we want to be in 2045

Goals

A general expression of community values and direction, expressed as ends

Policies + Measures

Policies: A specific statement that guides decision-making

Measures: An action, partnership, or program that carries out a policy

Desired Outcomes

**Wildfire Risk
Mitigation**

**Mitigation of Impacts
from Geologic Hazards**

**Minimize Impacts of
Flooding**

**Adaptable Crime
Prevention**

**Adequate Emergency
Evacuation**

Performance Metrics



Evacuation

Adequate evacuation capacity for all reasonably foreseeable hazard scenarios

Two evacuation routes for all new development



Crime Rate

Rates of violent and non-violent crime below state averages



Fire Response

Fire emergency response time under 6 minutes, based on National Fire Protection Association recommendations



Police Response

Police emergency response time under 6 minutes

Goals Overview

Minimize Wildfire Hazards

Minimize Crime

Safe Evacuation of Residents

Self-sufficient in an Emergency

Minimize Seismic Hazards

Minimize Flooding Hazards

Minimize Aircraft Risks

Minimize Hazardous Material Risk

Minimize Wildfire Hazards

- Prohibit new facilities in Very High Fire Hazard Severity Zone
- **Re-development complies with fire safety**
- **Enforce standards for construction, including a fuel modification program**
- **Provide fire-resistant landscaped buffer zones between high-risk fire hazard areas and urban development**
- **Require property owners to maintain firesafe zones**
- Ensure soils and waterways are suitable to support redevelopment following a large fire
- **All new development should identify multiple evacuation/emergency access routes**
- Continue to coordinate with the Los Angeles County Fire Department
- New development should meet applicable fire flow requirements

Legislation to be addressed:

- SB 379
- Update of wildfire hazard map

Safe Evacuation of Residents

- Designated emergency evacuation routes for various types of disasters (e.g., earthquake, wildfire, hazardous material release, dam failure) and various disaster scenarios
- Information readily available to all City residents
- New development must have at least two evacuation routes

Legislation to be addressed:

- Identification of emergency evacuation routes and capacity, and incorporation of findings and policies contained in the Local Hazard Mitigation Plan

Self-sufficient in an Emergency

- Update the City's Emergency Operations Plan
- Review emergency service equipment and shelters
- City staff to undergo regular disaster preparedness training
- Residences and businesses should maintain visible and clearly legible signs and/or street numbers to shorten the response times of emergency personnel
- Acceptable water quality in emergency situations

Minimize Crime

- **Track the types of rates of crime in the community**
- **Up-to-date crime statistics readily available**
- Maximize safety and security through project design
- Adequate lighting for buildings and parking areas
- Formation and continued education of neighborhood and business watch groups
- Opportunities for positive law enforcement and youth interaction



Goals Recap

POLL

Minimize Wildfire Hazards

Minimize Crime

Safe Evacuation of Residents

Self-sufficient in an Emergency

Minimize Seismic Hazards

Minimize Flooding Hazards

Minimize Aircraft Risks

Minimize Hazardous Material Risk



Questions?

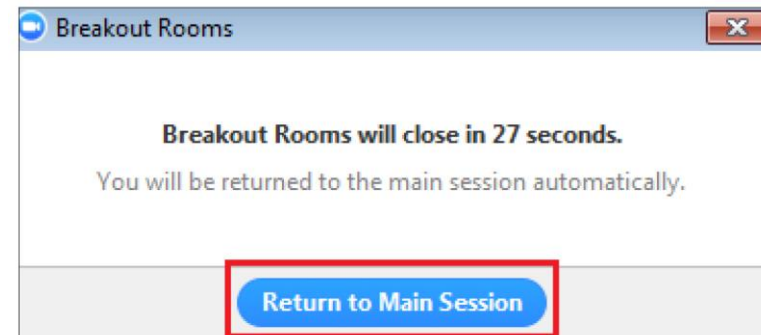
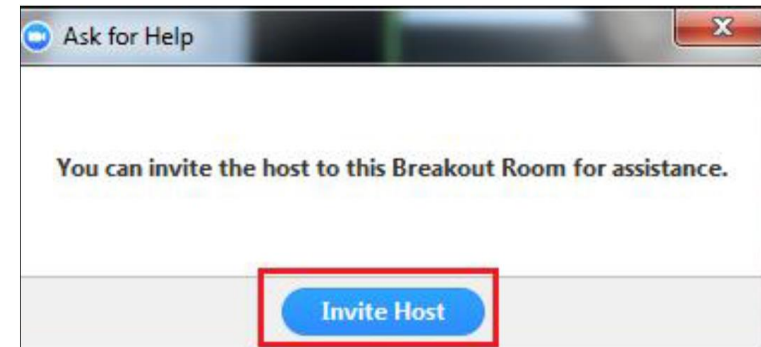
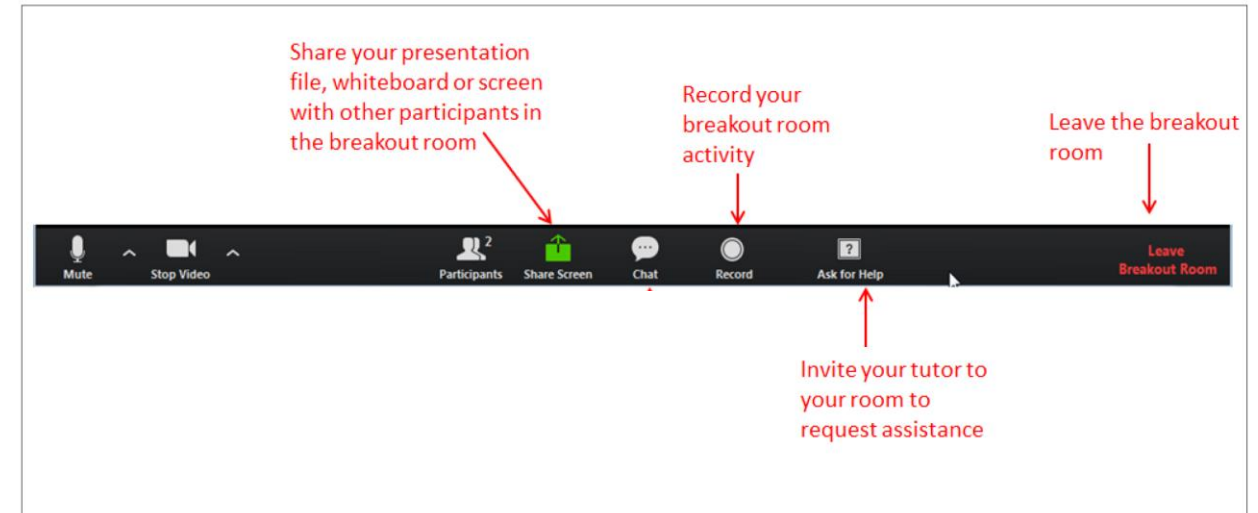
The background image is a photograph of a desert landscape, likely a park or public space. In the center, there is a stone archway with a sign that partially reads "PALM". The landscape is filled with various desert plants, including large spiky-leaved plants and smaller shrubs. In the distance, there are rolling hills and some utility poles. The entire image is covered with a dark teal color overlay.

Discussion



Breakout Rooms

- Breakout rooms allow **participation from more people** during a large meeting
- The meeting “host” will invite you and may set a timer, broadcast announcements, or pop-in to help
- “Participant” controls looks very similar to those in main session
- Brief disconnection then reconnected into the new breakout room



Small Group Instructions

- Introductions
- Questions for clarification
- Discuss each question (5-15 min each)
 - **Are there any outcomes we should consider?**
 - **Are there any policy ideas that we should consider?**
 - **Of the policy ideas, which resonate the most?**
 - **Is there anything else you'd like to share about these topics?**
- Consensus is NOT required
- Facilitator will record all comments

Report Back

Public Comment

You can also email generalplan@cityofpalmdale.org

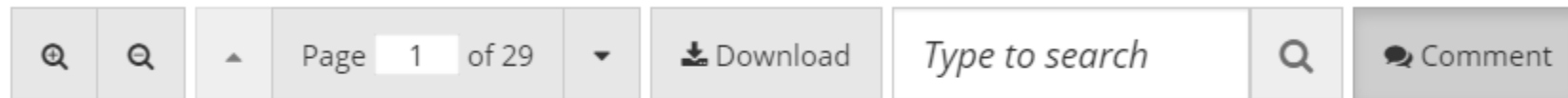
The background image shows a desert landscape with a stone archway in the center. The archway has the word "PALM" visible on it. There are palm trees and other desert plants around the archway. In the background, there are mountains and utility poles. The entire image is covered with a dark teal overlay.

Next Steps



Ongoing Feedback

Policy Frameworks will be available on the website to provide direct feedback




Click anywhere in the document to add a comment. Select a  bubble to view comments.



- Zoom In and Out
- Turn pages
- Search words
- Comment

Policy Framework - Comments

1

Click anywhere in the document to add a comment. Select a  bubble to view comments.



1. **Click** anywhere to add a comment

2. **Add** name, email, comments type and comment

3. **Interact** with other survey participants by like/dislike and replying to comments

2

Comments Close

Your name
Diana Benitez

E-mail
diana@raimiassociates.com

Add Comment
I agree, but think we should do more.

I have read and agree to the [Terms & Conditions](#) and [Privacy Policy](#).

Comment Type
Suggestion

Add Comment

3

Comments Close

Diana Benitez Mar 12 2021 at 8:24PM **Suggestion**
I agree, but think we should do more.
reply 1 0

Lina Mar 12 2021 at 8:25PM **Suggestion**
No, this policy is more than enough for commercial areas.
reply 1 0

Upcoming Policy Framework Meetings

All Meetings will be virtual from 6:30-8:30 pm

- **Wednesday, June 30th** *Resilience, sustainability, and climate change*
- **Thursday, July 15th** *Land use, mobility, and housing – Part 1*
- **Wednesday, July 28th** *Land use, mobility, and housing – Part 2*
- **Thursday, August 5th** *Economic development and military readiness*
- **Wednesday, August 11th** *Health, environmental justice, equity, parks + public facilities*

Upcoming Events and Next Steps

EIR Scoping Meeting on June 30th from 5:30-6:30 pm



Thank you!

City of Palmdale

Phone

661-267-5200

Email

generalplan@cityofpalmdale.org