

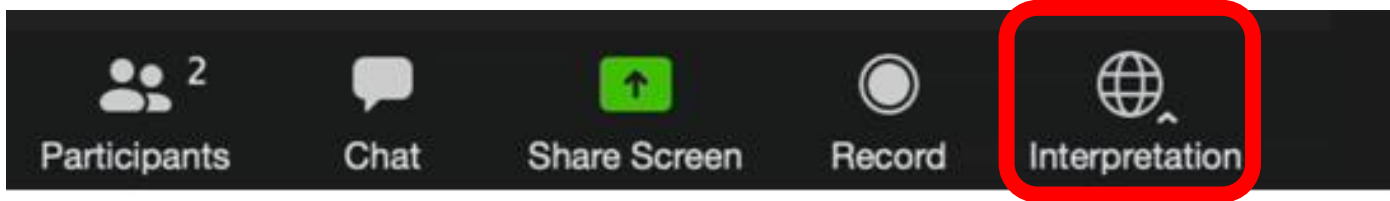
Envision PALMDALE 2045

Joint GPAC Meeting #15/Community Workshop
July 28, 2021 | Policy Frameworks Series: Land Use, Mobility, and
Housing (PART 2)

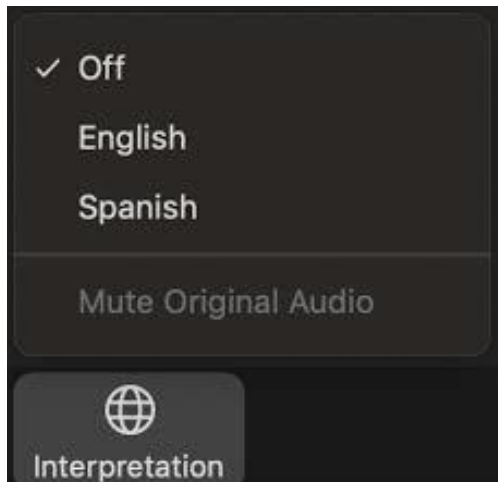
Please be advised that this meeting is being recorded

Spanish Interpretation & Raise Hand Function


- In your meeting controls, click **Interpretation** 



- Click the language that you would like to hear.



- (Optional) To hear the interpreted language only, click **Mute Original Audio**.

- Click **Raise Hand** in your meeting controls  or
- Press*9 on the phone line
- To lower your hand, click **Raise Hand** in your meeting controls.

Agenda

- Welcome & GPAC Roll Call
- Pledge of Allegiance
- GPAC Meeting #14 Minutes approval
- Policy Frameworks Background
- Topic Context
- Group Discussion
- Public comment
- Next Steps

Please be advised that this meeting is being recorded



Introductions

- **Carlene Saxton**, Director of Economic & Community Development
- **Megan Taggart**, Planning Manager
- **Benjamin Fiss**, Senior Planner
- **Drew Pletcher**, Deputy City Attorney
- **Simran Malhotra**, Principal (Raimi + Associates)
- **Melissa Stark**, Senior Planner (Raimi + Associates)
- **Meghan Weir**, Principal (Nelson\Nygaard)
- **Zach Zabel**, Senior Associate II (Nelson\Nygaard)

Roll Call – GPAC Members

- **Tony Avila**
- **Juan Blanco**
- **Lourdes T. Everett**
- **Colby Estes**
- **Laura Gordon**
- **Theresa Hambro**
- **Matthew Harris**
- **Aurora Hernandez**
- **Pat Hunt**
- **Sheri Kaneshiro**
- **Teri Lamping**
- **Deborah Rutkowski-Hines**
- **Jason Zink**

Pledge of Allegiance



*I pledge allegiance
to the flag of the
United States of
America*

*and to the
Republic for which
it stands, one
Nation under God,
indivisible,
with liberty and
justice for all.*

GPAC Meeting #14 Minutes

- Motion to approve or deny?

POLL

What You Need to Know: Questions and Comments

Questions and Comments

- We will be pausing during the presentation to answer questions
- There will be additional opportunity after the presentation to provide comments
- Public comment will take place at the end of the meeting
- Send additional questions or comments to **generalplan@cityofpalmdale.org**

POLL

General Plan Overview

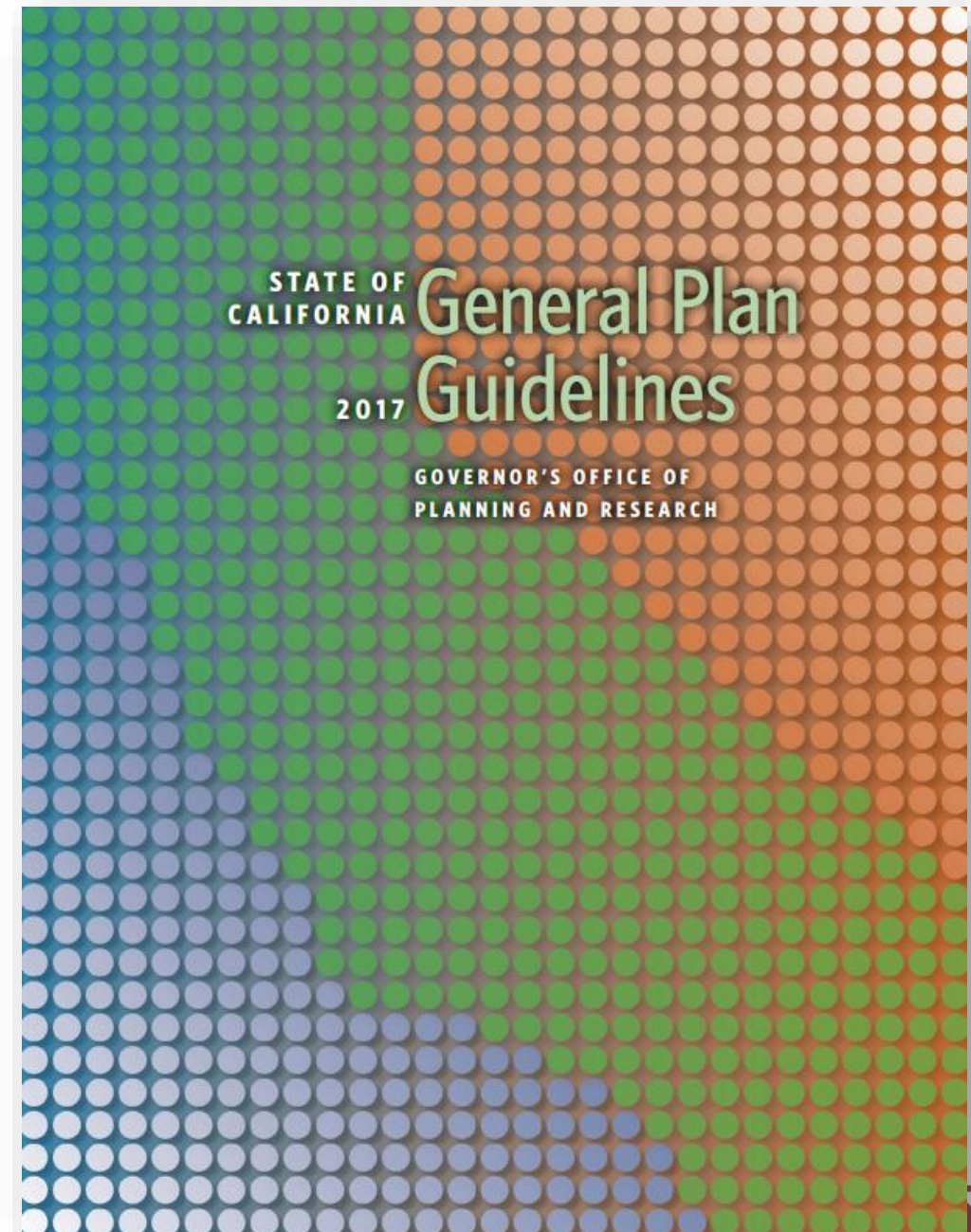
General Plan Requirements

Required Elements

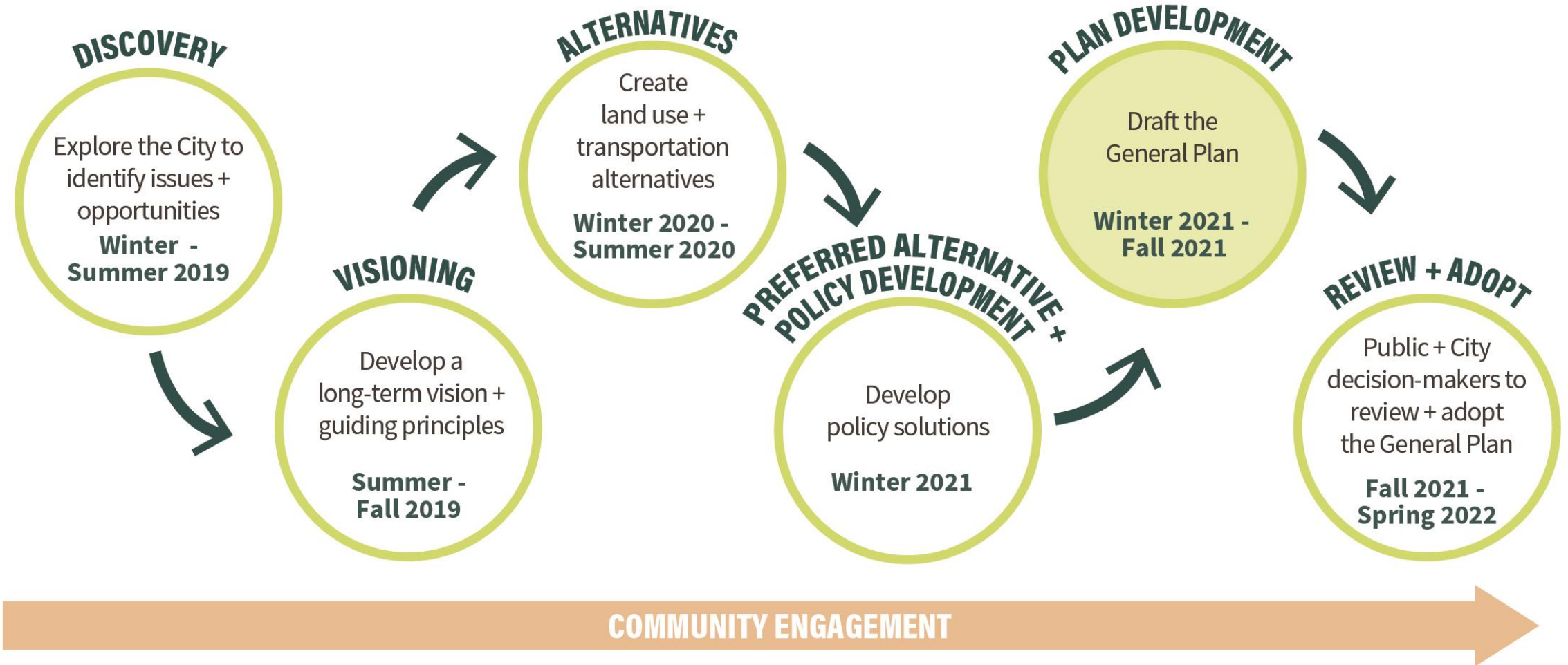
- **Land Use**
- **Circulation**
- Housing
- Conservation
- Open Space
- Noise
- Safety
- Air Quality
- Environmental Justice

Additional Considerations

- Community Design
- Equitable and Resilient Communities
- Healthy Communities
- Economic Development
- Climate Change
- Military Readiness



Palmdale 2045 Project Schedule



What are policy frameworks? And what do they include?

- Major topics that make up Elements of the General Plan
- An interim step in developing General Plan Elements
- An **opportunity for community input** on development of goals and policies

Safety,
Infrastructure,
& Hazards

June 17th

Resilience,
Sustainability, &
Climate Change

June 30th

Land Use,
Mobility, and
Housing

Part 2 Tonight

Economic
Development &
Military
Readiness

August 5th

Health,
Environmental
Justice, Equity,
Parks, & Public
Facilities

August 11th

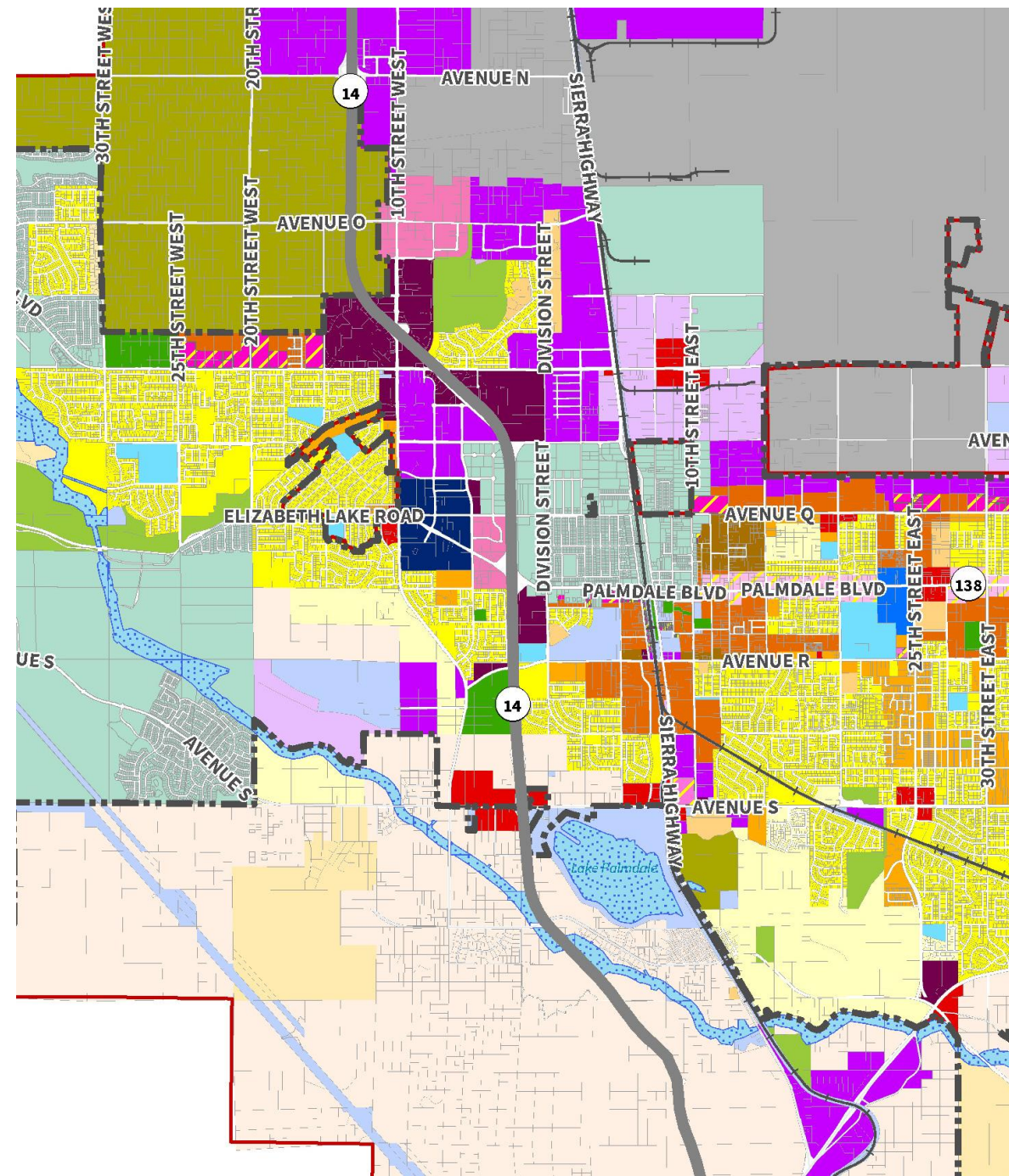


Questions?



Existing Setting

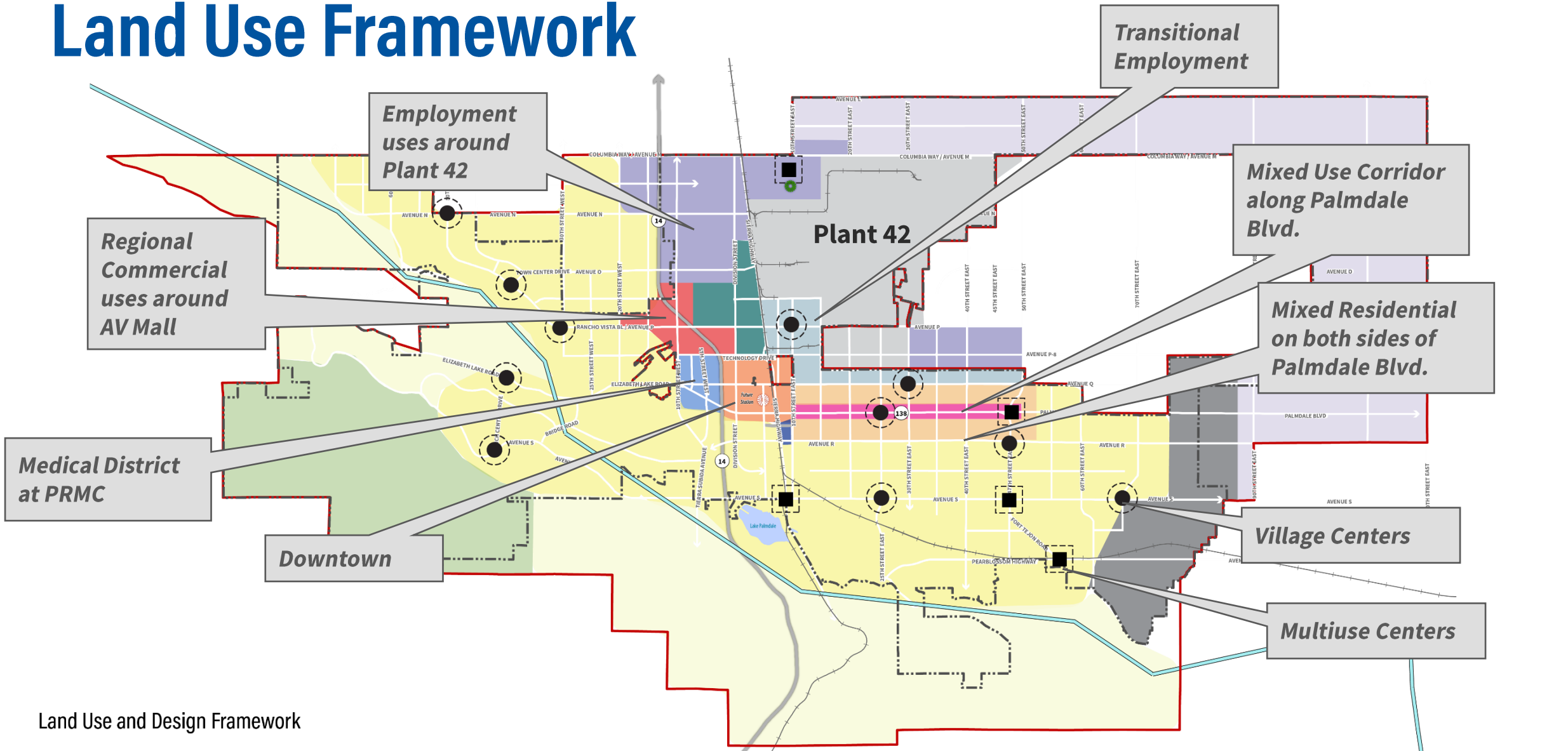
Land Use Background



What is the Land Use Element?

- Required component of a General Plan in California
- Roadmap for future change and development in Palmdale
- Accommodates growth while preserving and enhancing key City attributes

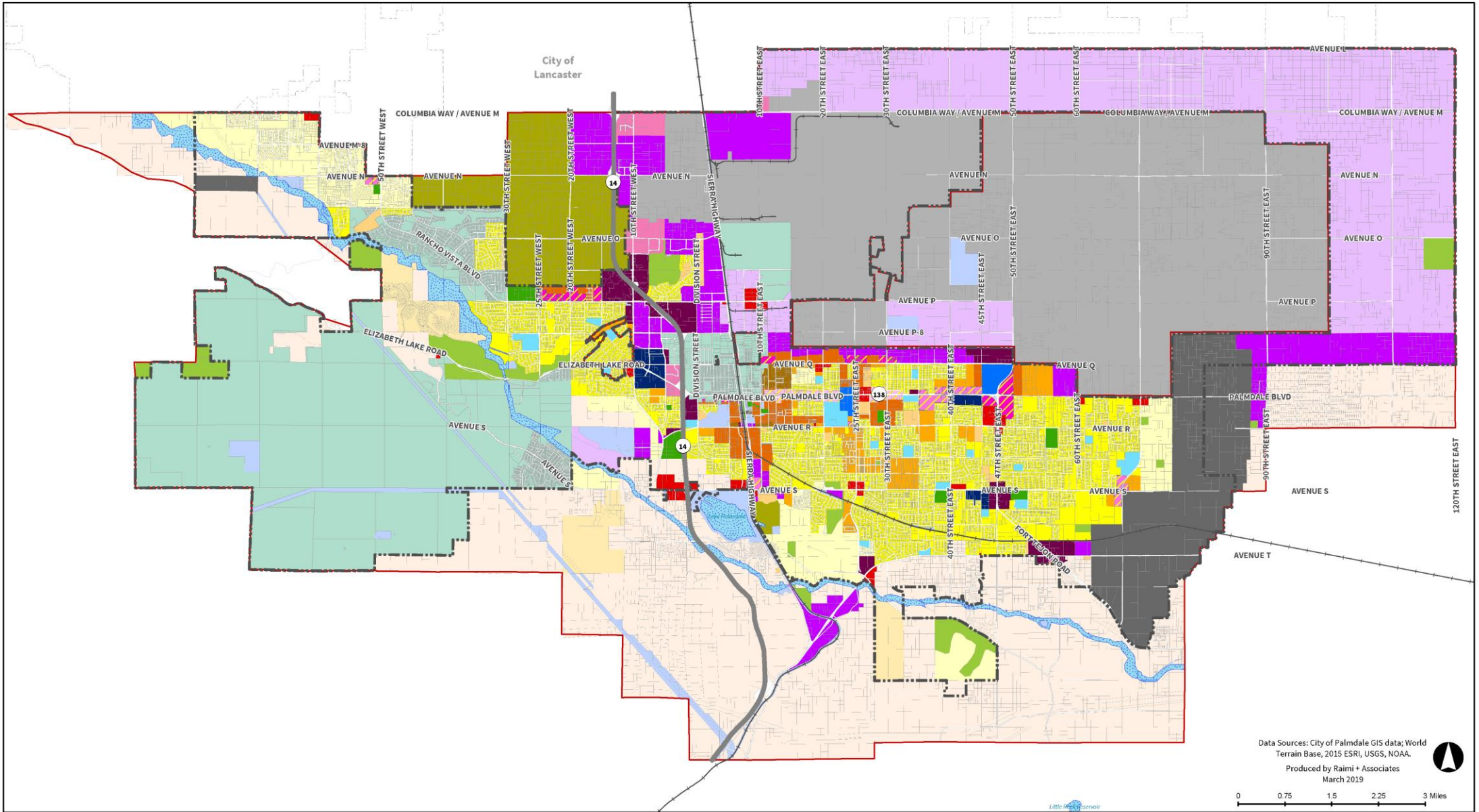
Land Use Framework



Land Use and Design Framework

- | | | | | | | | |
|---------------------|------------------------|------------------------|------------------|-------------------------|--------------------------|--------------------|----------------|
| City Boundary | Major Highway/Arterial | Mid Town District | Downtown | Plant 42 | Employment District | Civic District | Multi-Use Node |
| Sphere of Influence | Railroad | Existing Neighborhoods | Medical District | Transitional District | Future Employment | Open Space | Village Center |
| California Aqueduct | Transit Station | Future Neighborhoods | Mall District | Mixed Business District | Resource Extraction Area | Mixed-Use Corridor | |
| | Airport Terminal | | | | | | |

Preferred Land Use Plan



Residential Designations		Mixed Use		Commercial/Office/Other		Industrial		Public			
	Equestrian Residential		Residential Neighborhood 1		Mixed Use 1		Neighborhood Commercial		Employment Flex		Public Facility-School
	Low Density Residential		Residential Neighborhood 2		Mixed Use 2		Regional Commercial		Industrial		Public Facility-Civic
	Single Family Residential 1		Residential Neighborhood 3		Mixed Use 3		Visitor Commercial		Aerospace Industrial		Public Facility-Park
	Single Family Residential 2		Residential Neighborhood 4		Mixed Use 4		Specific Plan		Mineral Resource Extraction		Open Space
	Single Family Residential 3				Health and Wellness						
					Educational Flex						

Data Sources: City of Palmdale GIS data; World Terrain Base, 2015 ESRI, USGS, NOAA.
 Produced by Raimi + Associates
 March 2019

0 0.75 1.5 2.25 3 Miles

City Boundary
 Sphere of Influence
 Major Highway/Arterial
 Railroad
 Water Body/Aqueduct

Topics To Be Addressed in the Land Use Element

Housing

Employment

Health and
Equity

Economic
Development

Community
Design

Transportation
and Active
Transportation

Education and
Medical Uses

Specific Plans

Mobility Background



What is a Mobility Element?

*State Code requires any Mobility Element update plan for a “**balanced, multimodal transportation network that meets the needs of all users** of streets, roads, and highways for safe and convenient travel in a manner that is suitable to context of the general plan”*

- Long-term policy document to **guide the future actions** in Palmdale
- Establishes the **City’s existing and proposed transportation network** for the next 25 years
- Directly correlates with **Land Use Element**
- Supports **community design, health, equity, economic development, parks and recreation, noise, air quality, and sustainability**

Other Topics To Be Addressed in the Mobility Element

Circulation
Network

Parking
Management

Streetscape
Design

Sustainability

Health & Equity

Background

- Transportation network relies heavily on **arterial roadways** to move travelers throughout the community
- Arterial network **separating neighborhood streets limits connectivity** for intracity multimodal travel
- The **pedestrian environment is uninviting** and makes walking difficult.
- **Bicycle network is disconnected and limited** outside of a few neighborhoods within central Palmdale
- The existing transit network is concentrated in a few areas, and **difficult to access**
- Most residents **drive to work**, and many have **long commutes**.

Existing Plans

- **Complete Streets Plan (2018)**
- **Bicycle Transportation Plan (2018)**
- **Safe Routes to School Master Plan (2019)**
- **Street Maintenance Policies and Procedures (2011)**
- **General Plan, Circulation Element (1993)**
 - Establish, maintain and enhance a system of streets and highways to provide safe and efficient movement of goods and people
 - Reduce the # of trips and VMT by individuals to meet regional transportation and air quality goals
 - Encourage use of non-vehicular transportation
 - Promote opportunities for rail service to move goods, passengers, and commuters
 - Protect and promote a variety of air transportation services within the City of Palmdale

Feedback from Community Engagement

Key Concerns

- High speeds present safety concerns for all modes of travel on Palmdale roads
- Existing infrastructure needs improvements and/or upgrades
- Palmdale Boulevard (Hwy 138) is a State Route and changes would require Caltrans coordination
- State Route 14 divides the community
- Traffic and congestion
- Limited entry/exit points in/out of city
- Heavy truck volumes on some arterials
- Negative perceptions around public transit
- Railroad tracks inhibit emergency access
- Limited mobility for senior citizens (ACCESS does not serve all parts of the City)
- Imbalance in citywide transportation investments
- Many residents have long commutes

Feedback from Community Engagement

Key Opportunities

- Improve pedestrian safety and access across Palmdale roads
- Improve connectivity to retail and parks
- Improve access to existing hiking trails
- Improve access to social services in Palmdale and surrounding communities
- Improve access and connectivity to economic opportunities
- Expand local public transit service
- Expand bicycle network where appropriate
- Encourage walking and biking where appropriate
- Improve the comfort of bike paths and overall walkability
- Flexible on-demand paratransit service
- Improve passenger experience for existing AVTA transit riders
- Support transit-oriented vertical mixed-used and multi-family residential development
- Increase Metrolink Antelope Valley Line frequencies and service hours
- Future High-Speed Rail and passenger service to Palmdale Regional Airport

POLL

Questions?

Policy Framework

Land Use, Community Design and Housing Policy Framework

Introduction

The City of Palmdale has embarked on a comprehensive update to its General Plan, called "Envision Palmdale 2045: A Complete Community," to create a forward-looking document that will serve as the blueprint for the City's vision through the year 2045. The goals, policies, and actions in the 2045 General Plan will serve as a compass for decision-makers and will shape future City plans and actions. This revised document will replace the 1993 General Plan.

This land use and urban design policy framework is an interim step in the General Plan Update process prior to drafting the elements. This framework highlights key outcomes and performance metrics and includes a draft policy framework that includes goals, policies, and implementation activities. This policy framework was developed by compiling feedback from community members, General Plan Advisory Committee members, Planning Commission, and City Council. This framework synthesizes critical issues and policy approaches by describing key strengths and opportunities, challenges, and threats.

Where We Are Now

The following section highlights strengths, opportunities, challenges, and threats that have been identified by the planning team throughout the course of the General Plan update process, as well as input heard from community members, that have shaped the Land Use policy framework.

- **Strengths.** The natural environment is one of the most defining characteristics of Palmdale. Community members exude pride and appreciation for the open space and mountain views in Palmdale, expressing the desire for continued preservation through the General Plan Update. Many community members speak to the small-town atmosphere in Palmdale, which is unique for a community of over 150,000 people. Palmdale's comparatively affordable housing allows residents a chance for homeownership. In addition to Palmdale's physical characteristics, it is home to some of the most innovative

Policy Frameworks = An Interim Step

- These are initial, general ideas for policy direction
- This is not an exhaustive list of policies or measures but rather, ideas we want you to review and react to
- Additional policies + measures will be included in the General Plan

Framework Structure

Performance Metrics

Data used to measure progress

Targets

Level of performance to measure implementation

Outcomes



Statement describing where we want to be in 2045

Goals

A general expression of community values and direction, expressed as ends

Policies + Measures

Policies: A specific statement that guides decision-making

Measures: An action, partnership, or program that carries out a policy

Desired Land Use + Housing Outcomes

**Balanced Jobs and
Housing Growth**

**Promote mixed income
and affordable
housing**

**Walkable, complete,
“20-Minute”
Neighborhoods**

**Transit-Oriented
Community around
the Station**

**More Housing Options,
Especially Downtown**

**Expansion of
Aerospace, Light
Industrial, Film, &
Office Uses**

Land Use Goals

**Pedestrian-oriented,
human-scale, well-
landscaped streets**

**Activated Palmdale
Boulevard**

**Improved
Connectivity in
Existing
Neighborhoods**

**Improved Economy
with more jobs
through
Industrial/Office Uses**

**Reconceive Antelope
Valley Mall**

**Range of Housing
Opportunities/Types**

**Maintain Rural
Character**

Plant 42 Buffer

**Transit-oriented
community near
High-Speed Rail**

**Health and Wellness
Districts**

**Complete
Neighborhoods**

Educational Districts

Urban Core Infill

Village Centers

Pedestrian-oriented, human-scale, well-landscaped streets

- Require new homes developed with a **primary entryway and windows facing the street**
- Strongly encourage new subdivisions and master planned projects **include diversity of housing types and architectural styles**
- In new small-scale housing design site plans provide **amenities and integrate walking and bicycling**



Improve connectivity in existing neighborhoods

- **Pedestrian/bicycle connections to trails** and open space where appropriate
- Key boulevards and neighborhoods connectors to be redesigned, constructed, and operated as **multimodal boulevards**
- Introduce **new trails systems** connecting to the regional system
- Work towards 90% of residents living within $\frac{1}{4}$ **mile walking distance of a park, school, or trail.**



Activated and attractive Palmdale Boulevard

- Revitalize key nodes and **frontages** to enhance economic viability
- Consider pursuing a long-term take-over of the **street's right-of-way**
- Support **new nodes of neighborhood-serving mixed-use** activity at 40th and 47th streets east
- **Revitalize and activate** existing commercial shopping centers along the corridors
- Allow construction of narrow, **pedestrian-oriented frontage roads** to create a buffer from Palmdale Blvd
- Require new development or major additions to **provide street trees** facing Palmdale Blvd
- Create new places for **recreation and gathering** along Palmdale Blvd



Land Use Goals Overview

POLL

**Transit-oriented
community near
High-Speed Rail**

**Activated Palmdale
Boulevard**

**Improved
Connectivity in
Existing
Neighborhoods**

**Improved Economy
with more jobs
through
Industrial/Office Uses**

**Reconceive Antelope
Valley Mall**

**Range of Housing
Opportunities/Types**

**Maintain Rural
Character**

Plant 42 Buffer

**Pedestrian-oriented,
human-scale, well-
landscaped streets**

**Health and Wellness
Districts**

**Complete
Neighborhoods**

Educational Districts

Urban Core Infill

Village Centers

Mobility Outcomes

POLL

**Reduce severe injuries
and fatal collisions**

**More equitable and
reliable access**

**Increase walking,
biking, transit, and
shared rides**

**Reduce vehicle miles
traveled (VMT)**

**Increase quality of life
and economic
competitiveness**

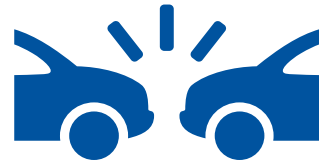
Performance Metrics



Access

Walk time to parks,
recreation centers, and
trails

Transit time to grocery
stores and social
services



Collisions

Downward trend in
severe injuries and
fatalities

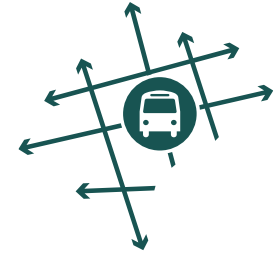
High injury
intersections
redesigned for safety



Vehicle Miles Traveled

Non-drive-alone mode share
(walk, bike, transit, shared
trips)

Decreased distance for
home-based drive-alone
trips



Quality of Life

Reduced average
commute time

Reduced Green House
Gas (GHG) emissions

Mobility Goals

**Safe and comfortable
travel for all modes,
ages, and abilities**

**Provide affordable,
equitable, and efficient
access to opportunities**

**Foster a more active and
vibrant downtown**

**Accommodate future
travel growth and
existing demand**

**Protect and reduce
impacts to the
environment**

**Implement innovations
and regional projects in
line with City's vision**

**Enhance quality of life
and public health**

Safe, comfortable transportation system for all travelers

- Design and maintain the public right-of-way through a **complete streets** approach that facilitates safe, comfortable, and efficient travel for all roadway users.
- Use a systemic safety approach to proactively identify opportunities to **improve safety** where conflicts between users exist.
- Complete and regularly update a Local Road Safety Plan that identifies a High Injury Network and **location-specific improvements**.
- Prioritize **safe routes for vulnerable roadway users**
- Revise, adopt, and implement the Draft **Complete Streets Plan**, and Draft **Palmdale Bicycle Transportation Plan**
- Develop and adopt a **Vision Zero** policy and action plan

Legislation to be addressed:

- AB 1358 – The Complete Streets Act (2008)

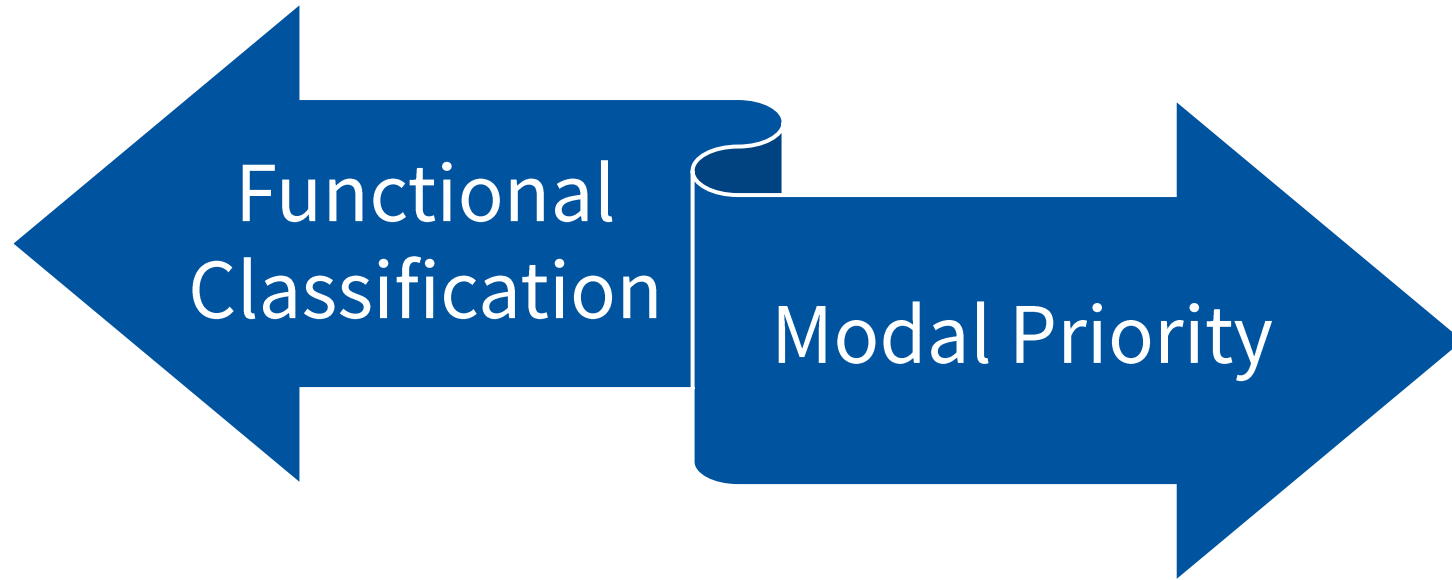
Accommodate future growth and maintain level of service

- Classify streets based on their **modal purpose and land use context**.
- Prioritize **safety, operations, and comfort for active and transit modes** on streets that have been identified as part of the multimodal network.
- Prioritize **safety and mobility for non-motorized modes** in all intersection designs.
- Emphasize multimodal solutions for traffic operations to **address vehicle delays**.
- Establish development review guidelines that **define transportation analysis and site design requirements** to address multimodal access needs and connections to the surrounding street and mobility network.
- Establish transportation analysis guidelines for large developments to construct or **fund multimodal improvements and congestion management** strategies in correlation with traffic impact analysis.

Legislation to be addressed:

- SB 375 - Sustainable Communities and Climate Protection Act (2008)
- SB 743 – LOS to VMT (2013)
- Update of circulation map

Comparing Classifications



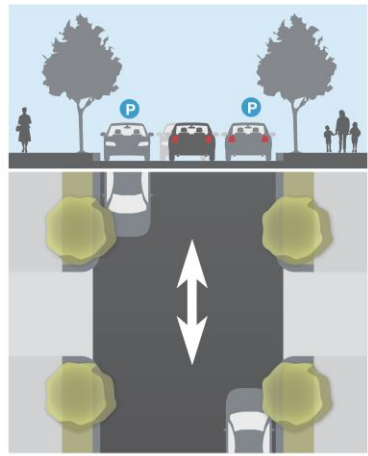
Typical Functional Classification

Local: Provides access to adjacent land uses exclusively.

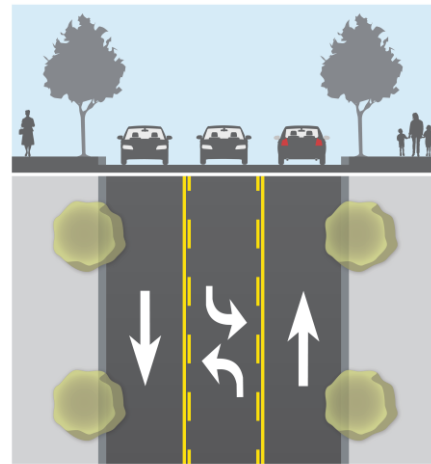
Collector: Connects local streets with arterials and provides access to adjacent land uses; balancing mobility with access.

Arterial: Mobility with access to collectors, some local streets and major traffic.

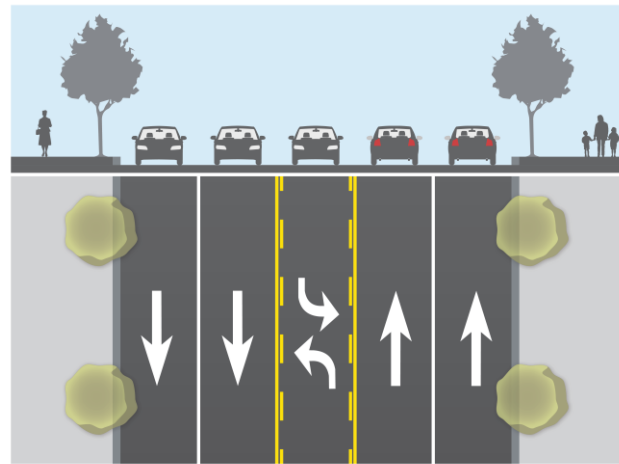
Expressway: Mobility with more frequent access to arterial streets than a freeway, but no direct land access.



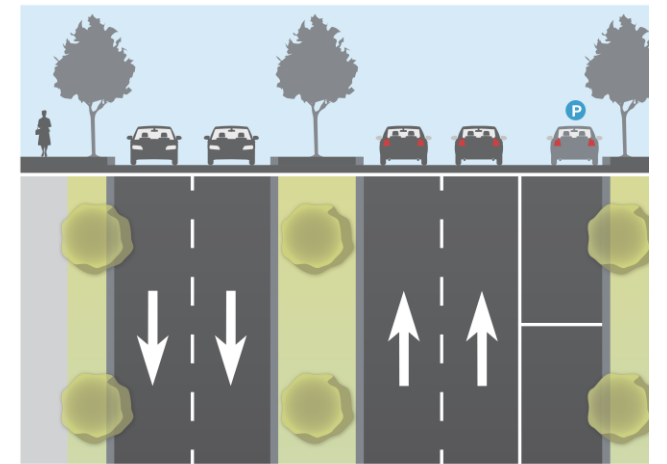
N ← | 24' CURB-TO-CURB | → S



N ← | 10' TRAVEL LANE | 10' DUAL LEFT TURN LANE | 10' TRAVEL LANE | → S
30' CURB-TO-CURB



N ← | 10' TRAVEL LANE | 10' TRAVEL LANE | 10' DUAL LEFT TURN LANE | 10' TRAVEL LANE | 10' TRAVEL LANE | → S
50' CURB-TO-CURB



W ← | 10' TRAVEL LANE | 10' TRAVEL LANE | 12.5' MEDIAN | 10' TRAVEL LANE | 10' TRAVEL LANE | 10.5' PARALLEL PARKING | 6' LANDSCAPING | → S
63' CURB-TO-CURB

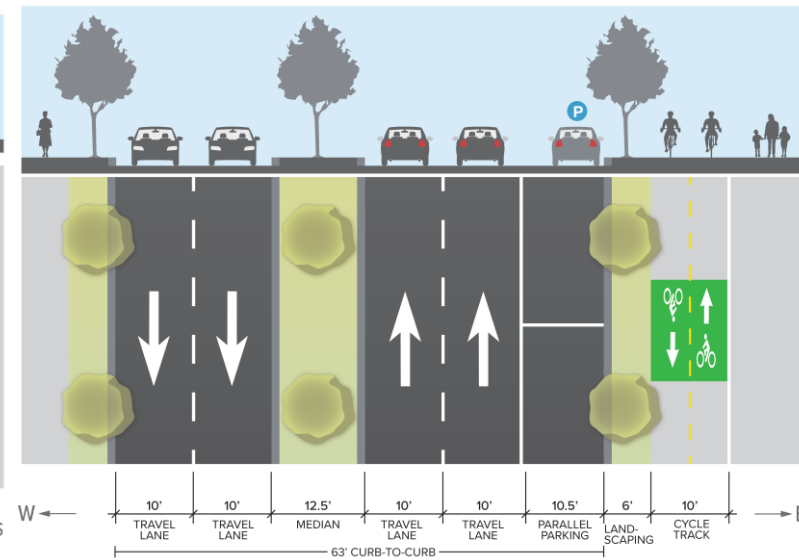
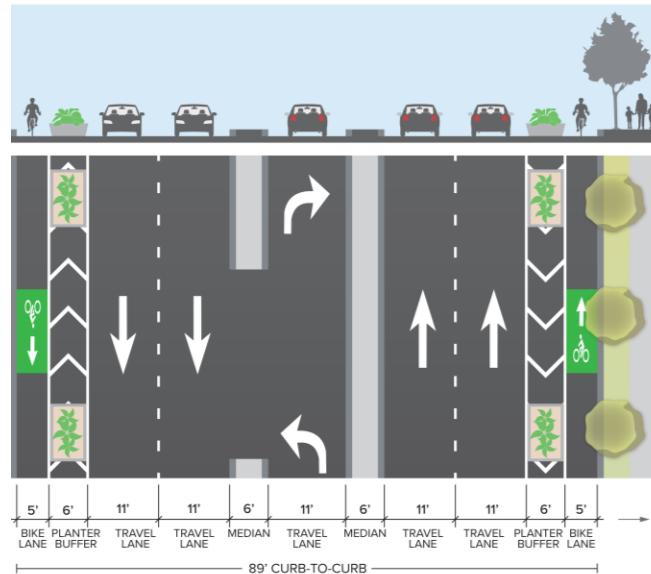
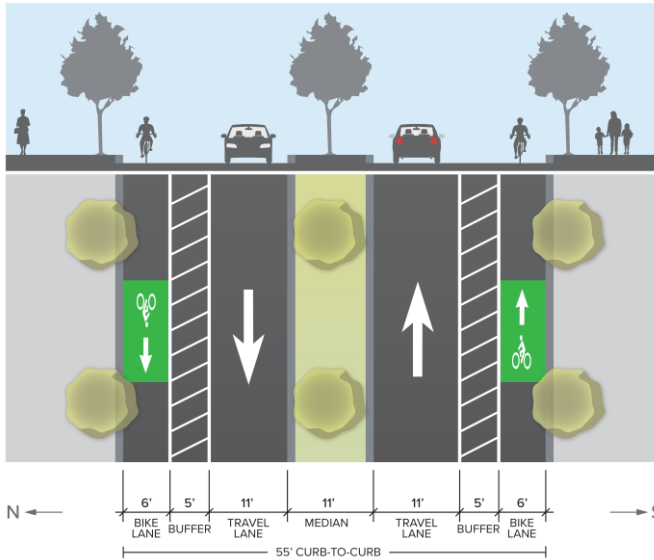
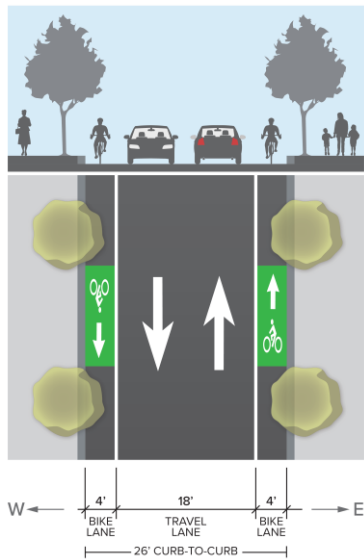
Modal Priority

Neighborhood: Local streets designed for safe mobility where we live

Connector: Arterials or collector streets that connect links in the regional or multimodal network.

Multimodal: Arterials or Collectors that can shift focus to support safe mobility by many modes.

Regional: Arterials identified to carry traffic to, from, or through Palmdale.



Mobility on Palmdale Boulevard

- Focus on multimodal connectivity along a commercial corridor
- Primary Mixed-Use corridor within Palmdale
- Connects Downtown and Medical district to the west to the parallel Midtown District east of 10th Street East
- Opportunity to support people traveling by all modes on and through the mixed-use corridor
- Separated bicycle facilities create a comfortable environment for people bicycling, and allows for access to local destinations

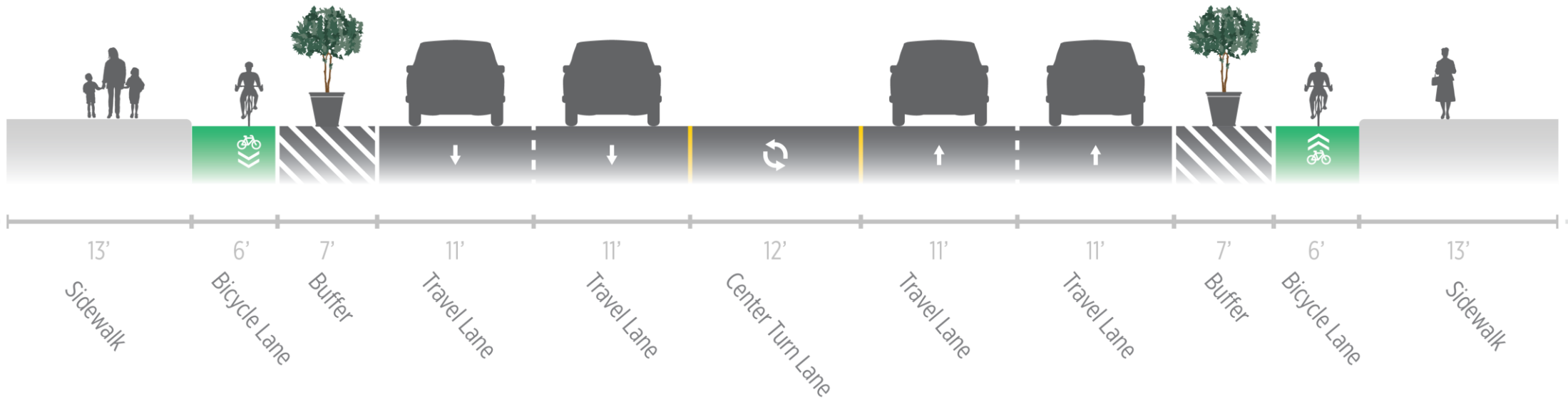
Existing Condition



Mobility on Palmdale Boulevard

Multimodal Street

Proposed Bicycle Configuration for Palmdale Blvd



Mobility on 10th Street West

- Focus on multimodal connectivity along an existing bus route
- Primary transit corridor within Palmdale
- Provides access to key shopping and retail destinations
- Adequate shelter at bus stops helps improve visibility of transit services and creates a more comfortable experience for passengers.

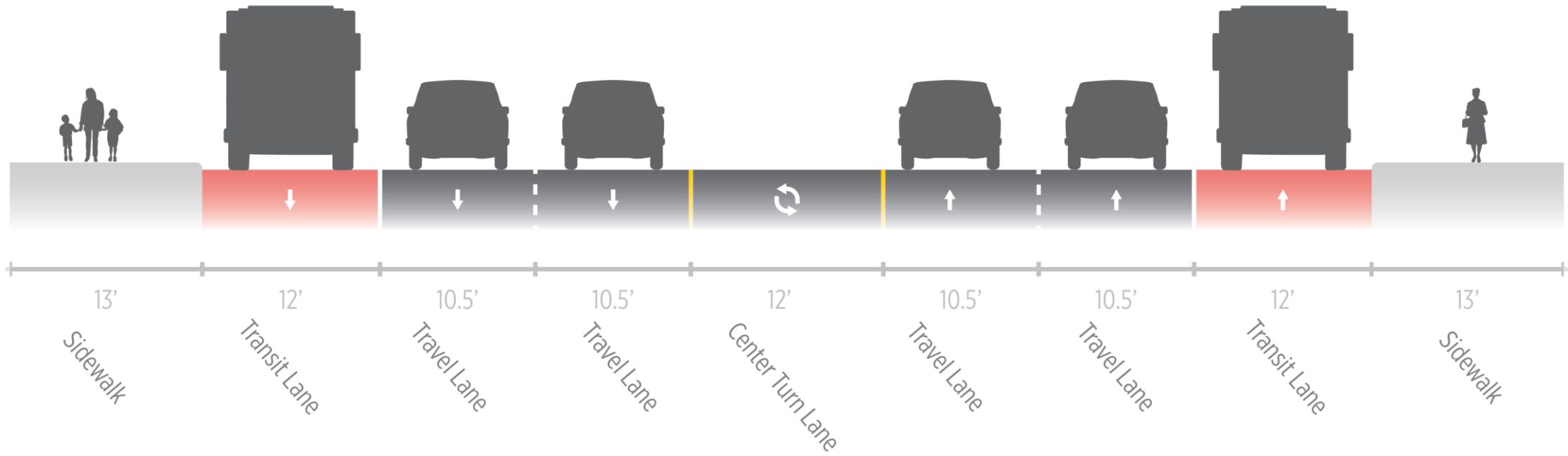
Existing Condition



Mobility on 10th Street West

Multimodal Street

Proposed Transit Configuration for 10th Street West



Access to employment centers and essential services

- Make **public transit a convenient and reliable option** for daily trip making
- Encourage investments and Capital projects that **reduce first/last-mile barriers to transit** stops
- Prioritize investments that **improve access to high quality jobs**
- Work with AVTA to enhance the deployment of transit services including **increased frequency and service spans**.
- Work with Metrolink to increase the frequency of on-peak services and **later service hours**
- Work with transit providers to **improve delivery of transit service and information**
- Work with large employers to implement programs that **expand access to non-drive alone commute options** for all commuters, including hourly staff and contract workers

Legislation to be addressed:

- SB 32 – Global Warming Solution Act (2006)

Transportation system that fosters a vibrant downtown

- Encourage wider sidewalks and plazas in a manner that **enhances placemaking, improves public safety, and supports local business**
- Promote and support creative and flexible approaches to parking, including **maximizing use of existing public supply** and sharing between uses to create a “**park once environment**”
- Enhance the safety and comfort of existing crossings, and **reduce the distance between crossings**
- Implement streetscape design **that improves the pedestrian environment** and appearance of downtown corridors.
- Create a permanent program that **reallocates excess public right-of-way and off-street parking** for the use of local restaurants and cultural programming
- **Balance** development intensity and roadway capacity

Legislation to be addressed:

- SB 375
- SB 743

Mobility Goals Overview

POLL

Provide affordable, equitable, and efficient access to opportunities

Safe and comfortable travel for all modes, ages, and abilities

Accommodate future travel growth and existing demand

Protect and reduce impacts to the environment.

Foster a more active and vibrant downtown.

Enhance quality of life and public health.

Implement innovations and regional projects in line with City's vision



Questions?

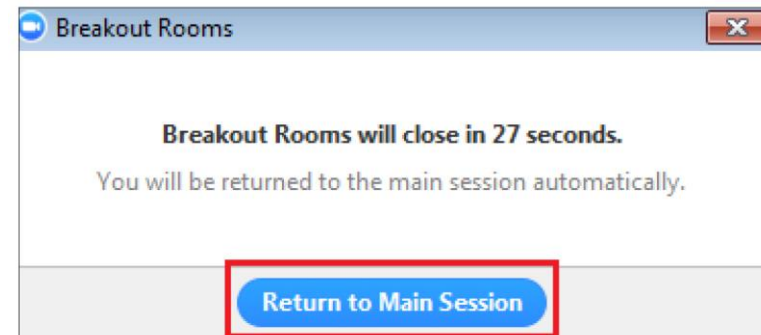
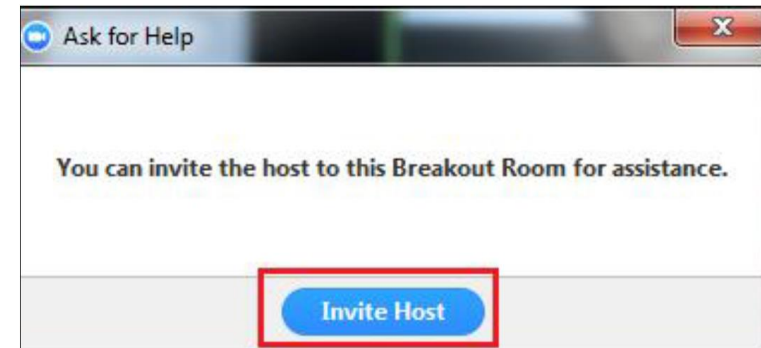
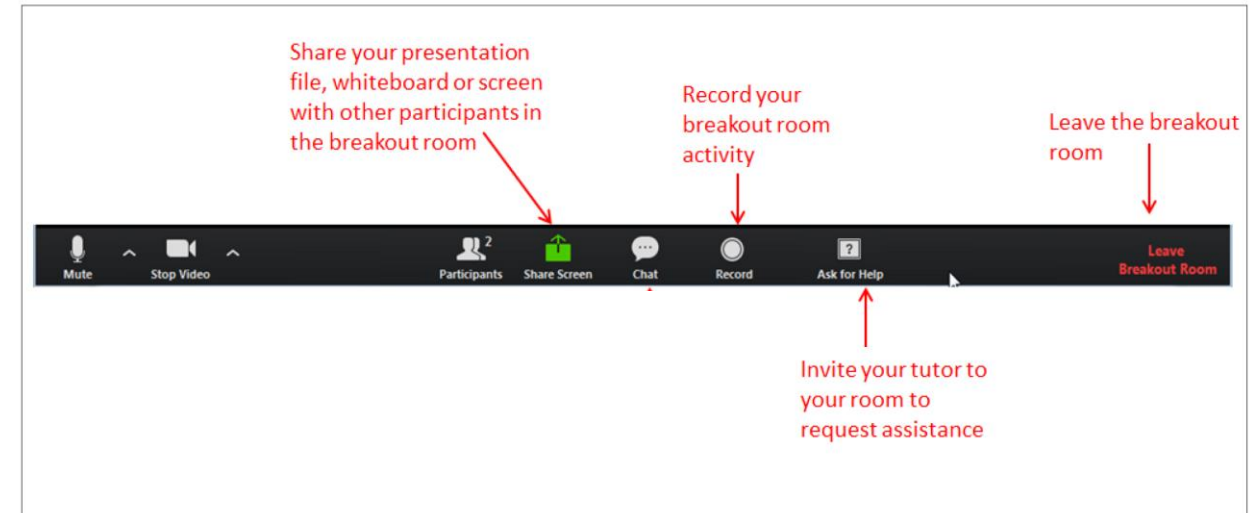
A dark teal overlay on a photograph of a desert landscape. In the background, a sign with the word 'PALM' is visible. The scene includes desert plants, a paved area, and distant hills.

Discussion



Breakout Rooms

- Breakout rooms allow **participation from more people** during a large meeting
- The meeting “host” will invite you and may set a timer, broadcast announcements, or pop-in to help
- “Participant” controls looks very similar to those in main session
- Brief disconnection then reconnected into the new breakout room



Small Group Instructions

- Introductions
- Questions for clarification
- Discuss each question (5-15 min each)
 - **Are there any outcomes we should consider?**
 - **Are there any policy ideas that we should consider?**
 - **Of the policy ideas, which resonate the most?**
 - **Is there anything else you'd like to share about these topics?**
- Consensus is NOT required
- Facilitator will record all comments

The background image shows a desert landscape with a stone archway in the foreground, palm trees, and mountains in the distance. The entire image is covered with a dark teal overlay. The text 'Report Back' is centered in white, with a white horizontal line below it.

Report Back

Public Comment

You can also email generalplan@cityofpalmdale.org

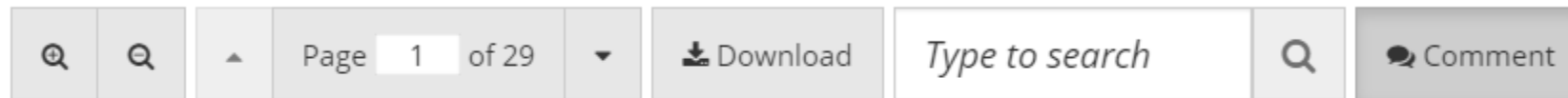
The background image shows a desert landscape with a stone archway in the center. The archway has the word "PALM" visible on it. There are palm trees and other desert plants around the archway. In the background, there are mountains and utility poles. The entire image is covered with a dark teal overlay.

Next Steps



Ongoing Feedback

Policy Frameworks will be available on the website to provide direct feedback




Click anywhere in the document to add a comment. Select a  bubble to view comments.



- Zoom In and Out
- Turn pages
- Search words
- Comment

Policy Framework - Comments

1

Click anywhere in the document to add a comment. Select a  bubble to view comments.



1. **Click** anywhere to add a comment

2. **Add** name, email, comments type and comment

3. **Interact** with other survey participants by like/dislike and replying to comments

2

Comments Close

Your name
Diana Benitez

E-mail
diana@raimiassociates.com

Add Comment
I agree, but think we should do more.

I have read and agree to the [Terms & Conditions](#) and [Privacy Policy](#).

Comment Type
Suggestion

Add Comment

3

Comments Close

Diana Benitez Mar 12 2021 at 8:24PM **Suggestion**
I agree, but think we should do more.
reply 1 0

Lina Mar 12 2021 at 8:25PM **Suggestion**
No, this policy is more than enough for commercial areas.
reply 1 0

Upcoming Policy Framework Meetings

All Meetings will be virtual from 6:30-8:30 pm

- **Thursday, August 5th** *Economic development and military readiness*
- **Wednesday, August 11th** *Health, environmental justice, equity, parks + public facilities*
- **Thursday, August 12th** *Planning Commission Update**
- **Tuesday, August 17th** *City Council Update**

* Hybrid meeting held at City Hall

Upcoming Events and Next Steps



Thank you!

City of Palmdale

Phone

661-267-5200

Email

generalplan@cityofpalmdale.org