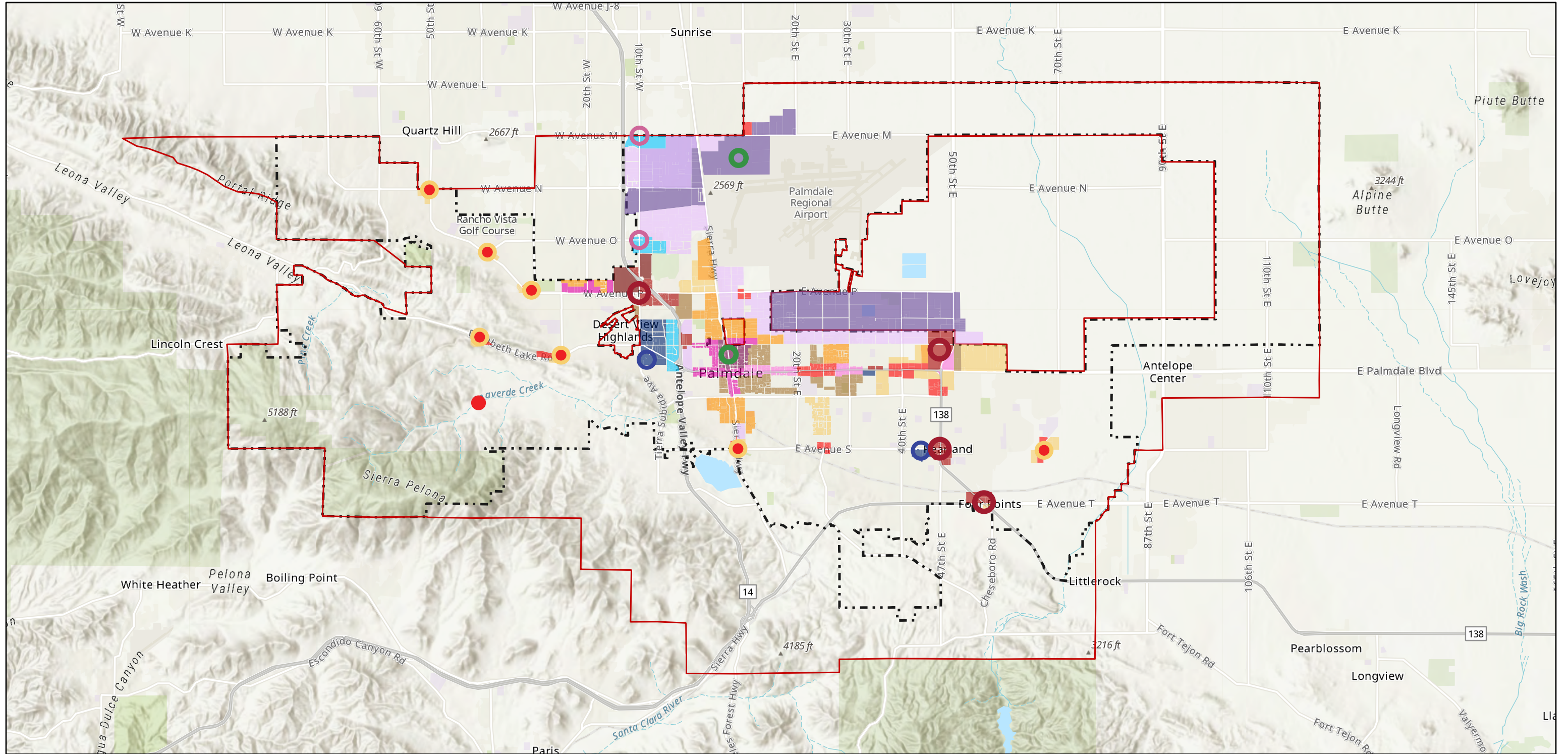


# Alternative #1



Alt 1 Points of Interest

- Educational/Health Center
- Neighborhood Commercial Center
- Neighborhood Commercial Center and Mixed Neighborhood 2
- Regional Multiuse Center
- Transportation Hub

Visitor Commercial Center

Alt 1 Land Use

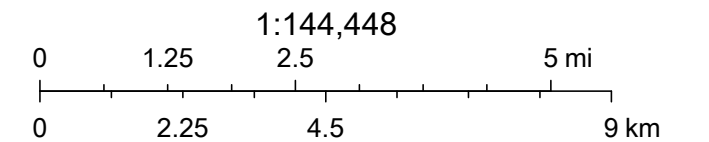
- Mixed Neighborhood 2 (MN2)
- Mixed Neighborhood 3 (MN3)
- Mixed Neighborhood 4 (MN4)
- Mixed Use 1 (MU1)

Mixed Use 3 (MU3)

- Mixed Use 4 (MU4)
- Aerospace Industrial (AI)
- Industrial (IND)
- Employment Flex (EF)
- Regional Commercial (RC)

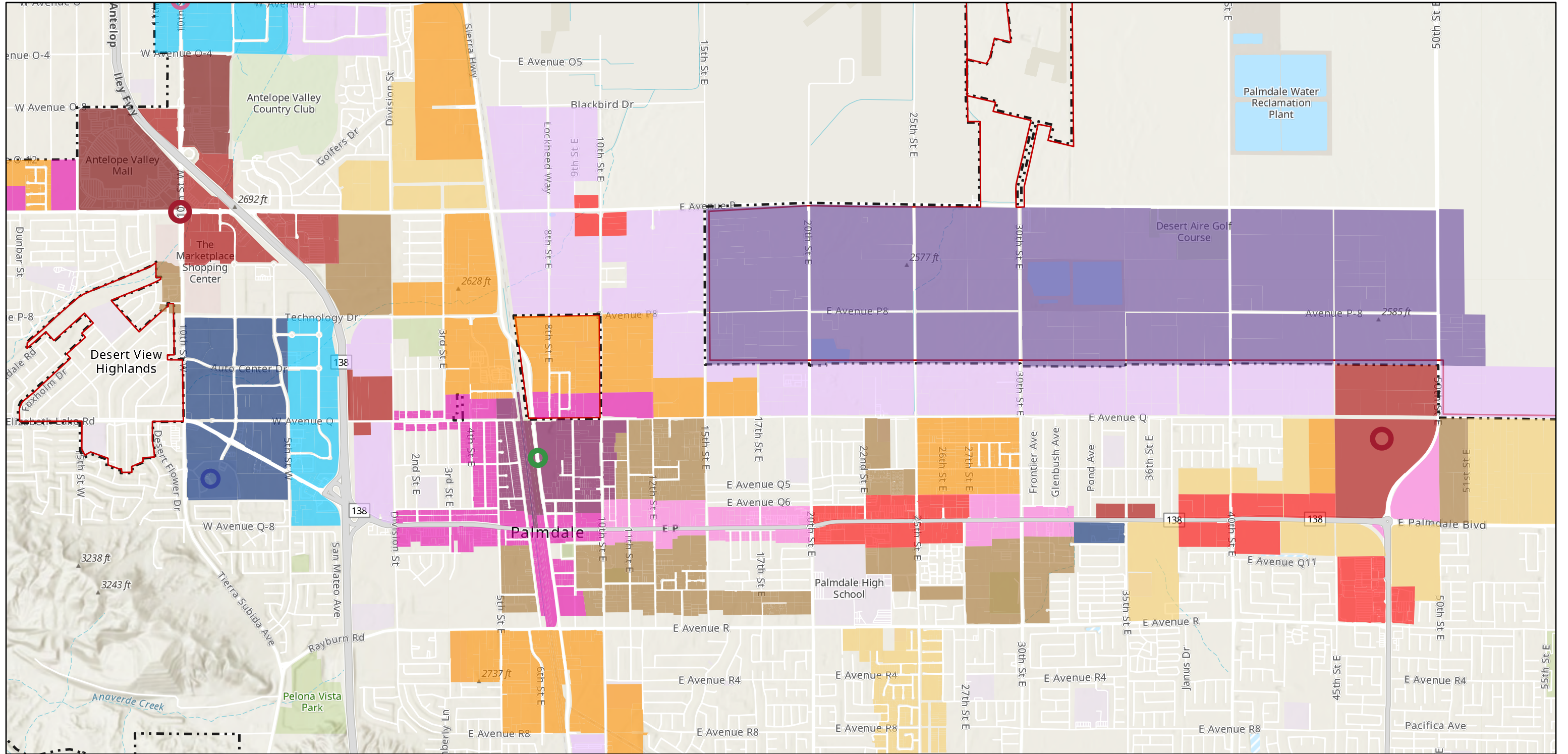
Neighborhood Commercial (NC)

- Visitor Commercial (VC)
- Institutional (I)
- Existing Mall
- SOI Boundary
- Palmdale City Boundary



Sources: Esri, Airbus DS, USGS, NGA, NASA, CGIAR, N Robinson, NCEAS, NLS, OS, NMA, Geodastystyrelsen, Rijkswaterstaat, GSA, Geoland, FEMA, Intermap and the GIS user community, Sources: Esri, HERE, Garmin, FAO, NOAA, USGS, © OpenStreetMap

# Alternative #1



Alt 1 Points of Interest

- Educational/Health Center
- Neighborhood Commercial Center
- Neighborhood Commercial Center and Mixed Neighborhood 2
- Regional Multiuse Center
- Transportation Hub

Visitor Commercial Center

Alt 1 Land Use

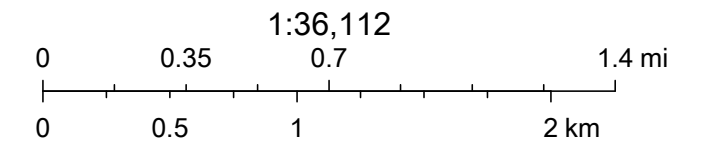
- Mixed Neighborhood 2 (MN2)
- Mixed Neighborhood 3 (MN3)
- Mixed Neighborhood 4 (MN4)
- Mixed Use 1 (MU1)
- Mixed Use 3 (MU3)
- Mixed Use 4 (MU4)

Mixed Use 4 (MU4)

- Aerospace Industrial (AI)
- Industrial (IND)
- Employment Flex (EF)
- Regional Commercial (RC)

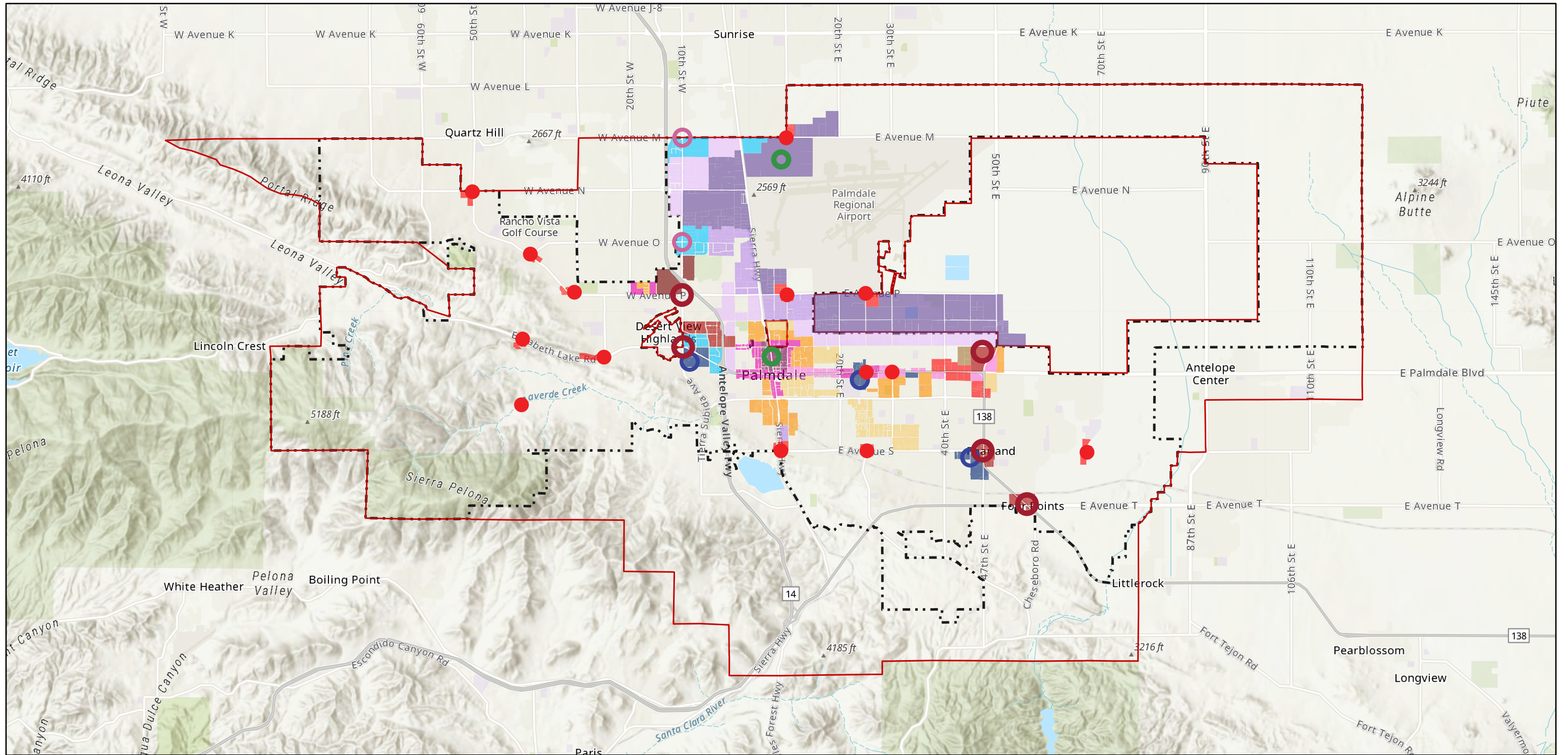
Neighborhood Commercial (NC)

- Visitor Commercial (VC)
- Institutional (I)
- Existing Mall
- SOI Boundary
- Palmdale City Boundary



Sources: Esri, Airbus DS, USGS, NGA, NASA, CGIAR, N Robinson, NCEAS, NLS, OS, NMA, Geodastystyrelsen, Rijkswaterstaat, GSA, Geoland, FEMA, Intermap and the GIS user community, Sources: Esri, HERE, Garmin, FAO, NOAA, USGS, © OpenStreetMap

# Alternative #2



Alt 2 Points of Interest

- Educational/Health Center
- Neighborhood Commercial Center
- Regional Multiuse Center
- Transportation Hub

Alt 2 Land Use

- Mixed Neighborhood 2 (MN2)
- Mixed Neighborhood 3 (MN3)
- Mixed Neighborhood 4 (MN4)
- Visitor Commercial Center

Mixed Use 1 (MU1)

- Mixed Use 2 (MU2)
- Mixed Use 3 (MU3)
- Mixed Use 4 (MU4)
- Aerospace Industrial (AI)

Industrial (IND)

- Employment Flex (EF)
- Regional Commercial (RC)
- Neighborhood Commercial (NC)
- Visitor Commercial (VC)

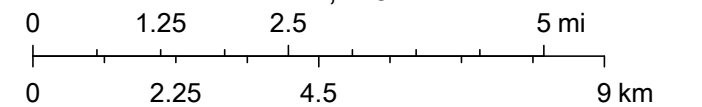
Institutional (I)

- Existing Mall

SOI Boundary

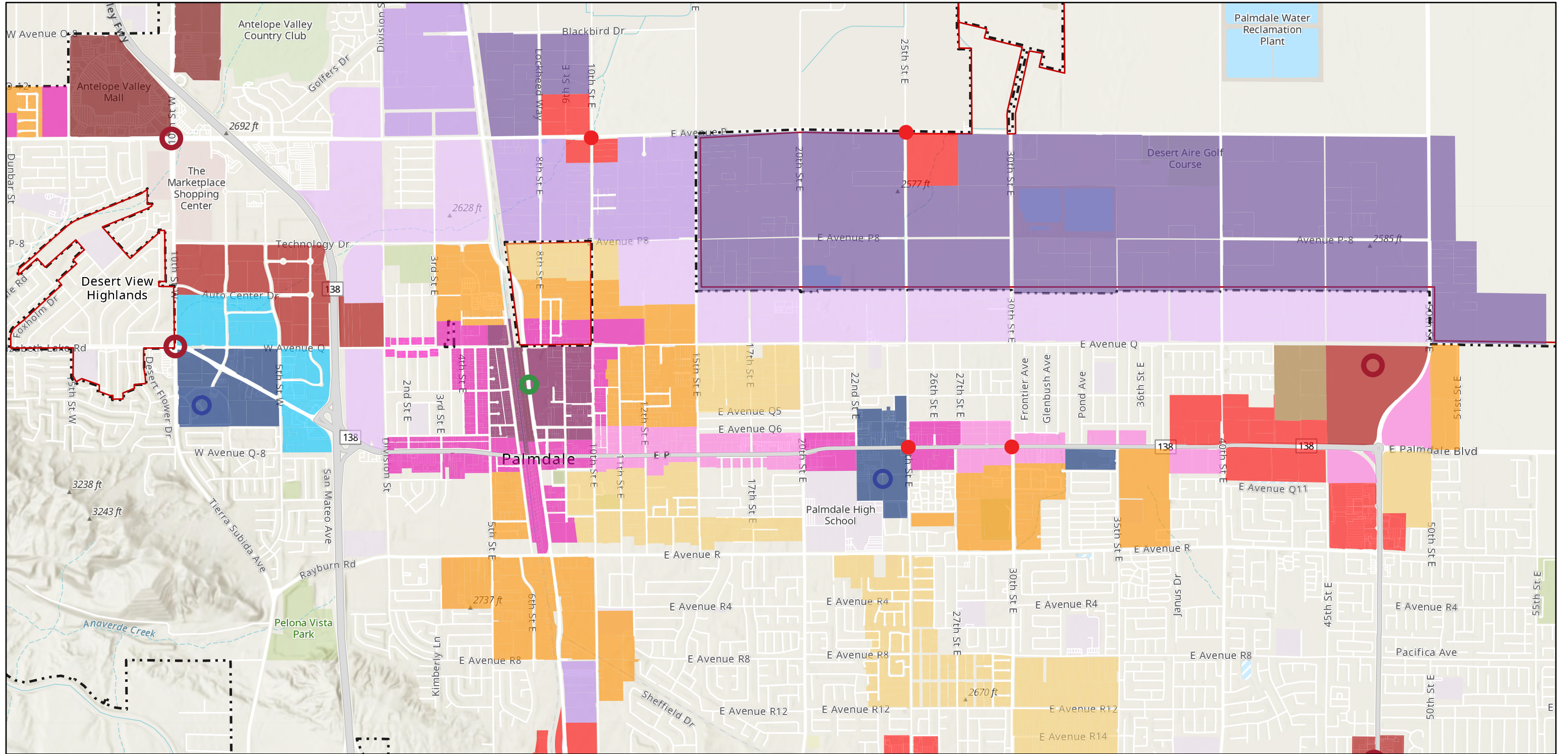
Palmdale City Boundary

1:144,448







Sources: Esri, Airbus DS, USGS, NGA, NASA, CGIAR, N Robinson, NCEAS, NLS, OS, NMA, Geodatastyrelsen, Rijkswaterstaat, GSA, Geoland, FEMA, Intermap and the GIS user community, Sources: Esri, HERE, Garmin, FAO, NOAA, USGS, © OpenStreetMap













# Alternative #2






Alt 2 Points of Interest

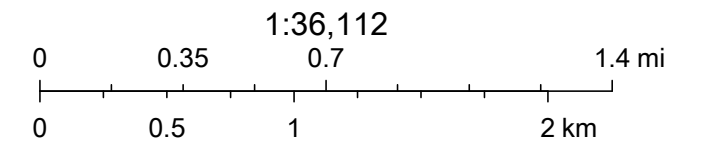
-  Educational/Health Center
-  Neighborhood Commercial Center
-  Regional Multiuse Center
-  Transportation Hub

Alt 2 Land Use

-  Mixed Neighborhood 2 (MN2)
-  Mixed Neighborhood 3 (MN3)
-  Mixed Neighborhood 4 (MN4)
-  Mixed Use 1 (MU1)
-  Mixed Use 2 (MU2)
-  Mixed Use 3 (MU3)
-  Mixed Use 4 (MU4)
-  Industrial (IND)
-  Employment Flex (EF)
-  Regional Commercial (RC)
-  Neighborhood Commercial (NC)
-  Institutional (I)

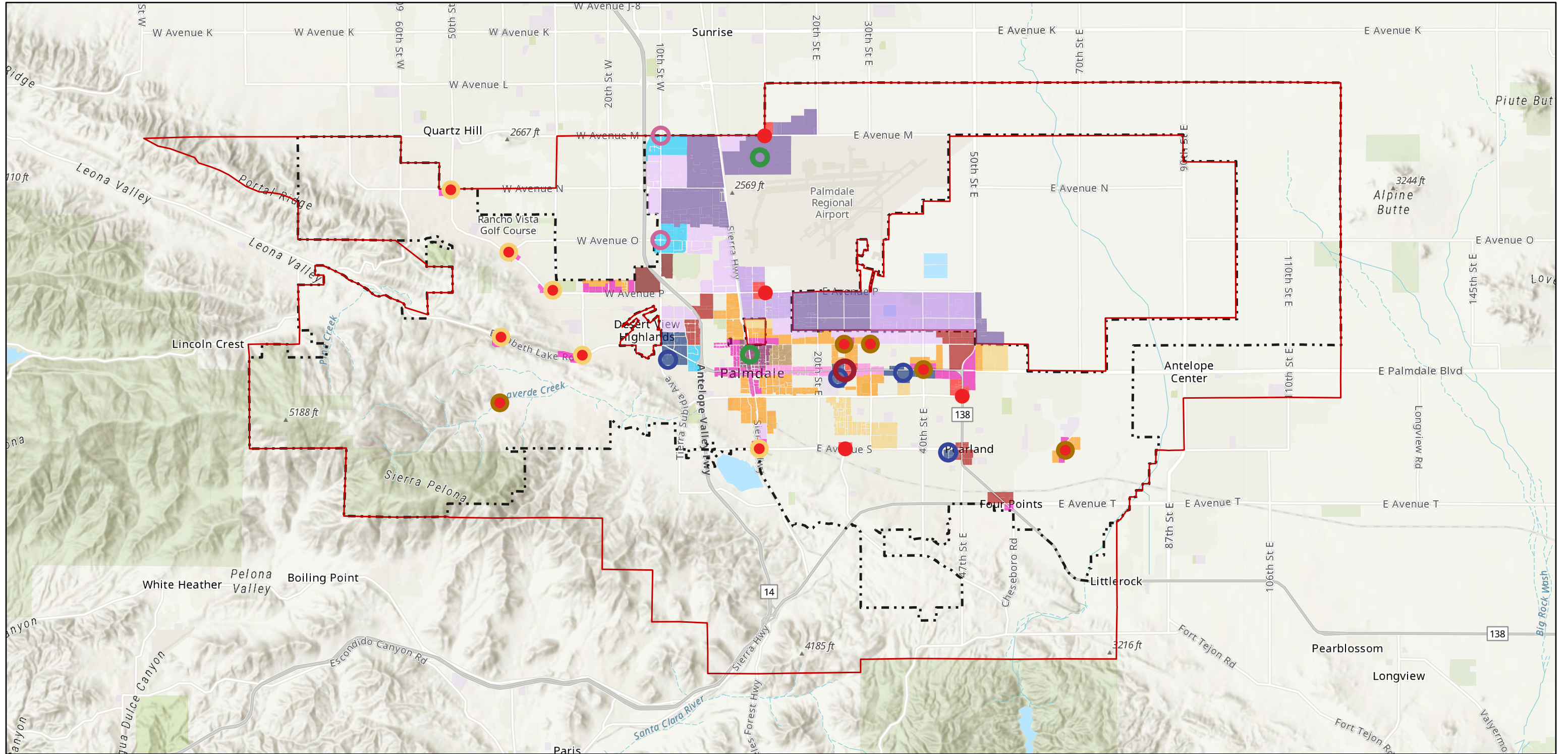
Existing Mall

-  Existing Mall
-  SOI Boundary
-  Palmdale City Boundary

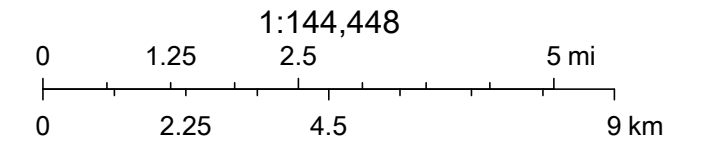


Sources: Esri, Airbus DS, USGS, NGA, NASA, CGIAR, N Robinson, NCEAS, NLS, OS, NMA, Geodastystyrelsen, Rijkswaterstaat, GSA, Geoland, FEMA, Intermap and the GIS user community, Sources: Esri, HERE, Garmin, FAO, NOAA, USGS, © OpenStreetMap

# Alternative #3

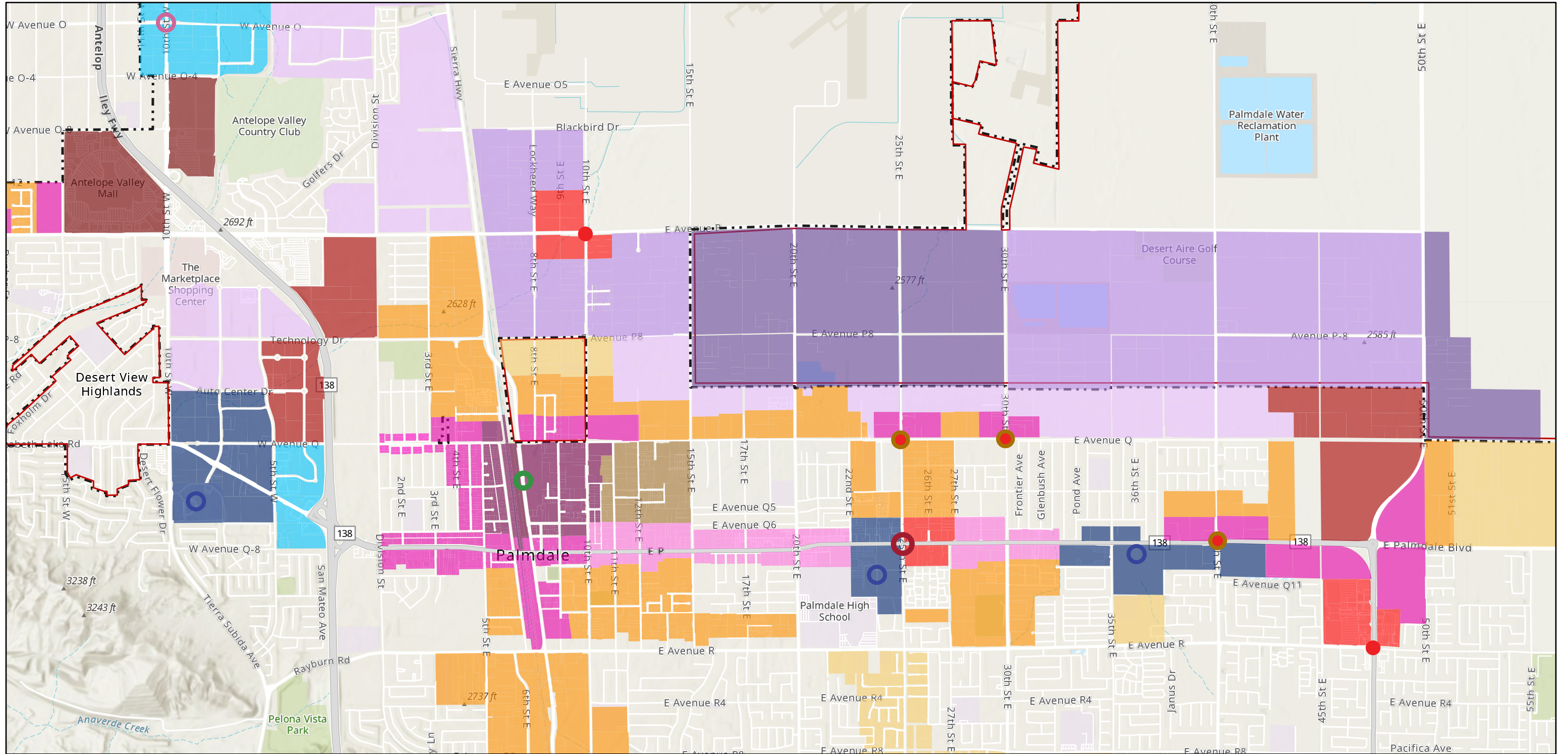


- |  |                            |                              |                         |
|--|----------------------------|------------------------------|-------------------------|
| <b>Alt 3 Points of Interest</b>                | Visitor Commercial Center  | Mixed Use 3 (MU3)            | Visitor Commercial (VC) |
| Educational/Health Center                      | <b>Alt 3 Land Use</b>      | Mixed Use 4 (MU4)            | Institutional (I)       |
| Neighborhood Commercial Center                 | Mixed Neighborhood 2 (MN2) | Aerospace Industrial (AI)    | Existing Mall           |
| Neighborhood Commercial Center and Mixed Use 2 | Mixed Neighborhood 3 (MN3) | Industrial (IND)             | SOI Boundary            |
| Neighborhood Commercial Center and Mixed Use 3 | Mixed Neighborhood 4 (MN4) | Employment Flex (EF)         | Palmdale City Boundary  |
| Regional Multiuse Center                       | Mixed Use 1 (MU1)          | Regional Commercial (RC)     |                         |
| Transportation Hub                             | Mixed Use 2 (MU2)          | Neighborhood Commercial (NC) |                         |



Sources: Esri, Airbus DS, USGS, NGA, NASA, CGIAR, N Robinson, NCEAS, NLS, OS, NMA, Geodatastyrelsen, Rijkswaterstaat, GSA, Geoland, FEMA, Intermap and the GIS user community, Sources: Esri, HERE, Garmin, FAO, NOAA, USGS, © OpenStreetMap

# Alternative #3



## Alt 3 Points of Interest

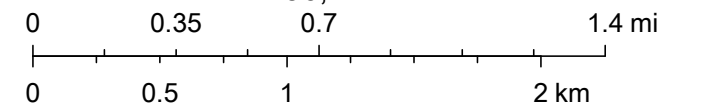
- Educational/Health Center
- Neighborhood Commercial Center
- Neighborhood Commercial Center and Mixed Use 3
- Regional Multiuse Center
- Transportation Hub

## Alt 3 Land Use

- Mixed Neighborhood 2 (MN2)
- Mixed Neighborhood 3 (MN3)
- Mixed Neighborhood 4 (MN4)
- Mixed Use 1 (MU1)
- Mixed Use 2 (MU2)
- Mixed Use 3 (MU3)
- Mixed Use 4 (MU4)
- Aerospace Industrial (AI)
- Industrial (IND)
- Employment Flex (EF)
- Regional Commercial (RC)

- Neighborhood Commercial (NC)
- Visitor Commercial (VC)
- Institutional (I)
- Existing Mall
- SOI Boundary
- Palmdale City Boundary

1:36,112



Sources: Esri, Airbus DS, USGS, NGA, NASA, CGIAR, N Robinson, NCEAS, NLS, OS, NMA, Geodatastyrelsen, Rijkswaterstaat, GSA, Geoland, FEMA, Intermap and the GIS user community, Sources: Esri, HERE, Garmin, FAO, NOAA, USGS, © OpenStreetMap