

Palmdale General Plan Update

Workshop #1 Summary

August 24, 2019 | 9:30 am – 11:30 am | Palmdale Aerospace Academy
August 27, 2019 | 6:30 pm – 8:30 pm | Highland High School

On Saturday, August 24, 2019 and Tuesday August 27, 2019, the City of Palmdale hosted two workshops to engage the community in crafting a vision and key priorities for the General Plan Update, Envision Palmdale 2045. These two workshops are the first of a series of four that will take place over the course of the Plan Update. Both workshops presented the same materials, offering community members with different schedules an opportunity to participate.



Saturday's workshop took place at the Palmdale Aerospace Academy from 9:30 am to 11:30 am. The event was attended by approximately 52 community members in addition to City staff and policy makers. Tuesday's workshop took place at Highland High School from 6:30 pm to 8:30 pm and was attended by approximately 30 community members in addition to City staff and policy makers.

Both workshops had mirroring agendas, beginning with open house style interactive activities in five main stations. The meetings formally began with an introduction by Mayor Hofbauer, followed by a presentation by Simran Malhotra, project consultant with Raimi + Associates. Simran provided an overview of the Palmdale General Plan Update, key existing conditions, and an introduction to the small group discussions.

Activities

The workshop interactive activities included:

- 1. Demographic Information:** Participants provided feedback on their age, if they live in the city of Palmdale, and if so, how long.
- 2. Where do you live?** Participants placed a small sticker dot approximately where they live in Palmdale.
- 3. What should go where?** In this activity participants placed custom stickers of land uses to propose what uses or infrastructure should go where on an aerial map of Palmdale.
- 4. Top Priorities:** Participants were given three sticker dots and asked to select their top three priorities for the future in Palmdale. The list of priorities comes from stakeholder focus groups, GPAC meeting feedback, and initial results from the first survey.
- 5. My Vision Activity:** This activity allowed participants to write out or draw their vision for the future of Palmdale.

Following the activities and presentation attendees were invited to participate in small group discussions led by General Plan Team facilitators. The group discussed four questions. Each group had a note taker who tracked major themes from each question and a reporter who shared with the larger group at the end of the discussions. The following pages include key concepts from the discussions and activities. Appendix A includes detailed workshop results and individual responses.

Small Group Discussions

Participants were asked the following questions in groups.

1. What makes Palmdale unique and special?
2. What should be preserved or changed in the future?
3. What are key issues and opportunities facing Palmdale today and in the future?
4. How can we build community collaboration during the General Plan Update process?

Key Takeaways

Major takeaways of both workshop small group discussions were:

- + **Preserve Assets.** Many participants noted the natural environment and open space, aerospace industry and Plant 42, small town atmosphere, sense of community, and affordability of homes as key assets which should be preserved in the future. Participants also mentioned the location and proximity to the Los Angeles basin as an asset and diversity of residents as unique and special.
- + **Issues.** Participants expressed similar issues in Palmdale which they'd like to address in the future. These include: lack of housing type diversity, lack of higher education or training, poor access to healthcare and mental healthcare services, lack of activity and programs for youth, bicycle infrastructure, long commutes, need for improved transportation and transit, environmental concerns like wildfire and water availability, negative reputation, division between East and West Palmdale, and contentious relationship with nearby city of Lancaster.
- + **Opportunities.** Participants noted active transportation and infrastructure like High Speed Rail, Brightline Virgin Trains USA, and airport as key opportunities for the future. Others like infill development, expanded education and training, expanded housing options, additional entertainment and restaurant options were also noted.
- + **Palmdale Boulevard.** Participants named Palmdale Boulevard as an area in need of revitalization. Many folks expressed a desire for Palmdale Boulevard to look and feel like a downtown with a town square.
- + **Community Collaboration.** Many of the ideas proposed for building collaboration during the General Plan process are currently underway. New ideas proposed by participants included high school student engagement, photo contest, meetings in parks, and online voting.

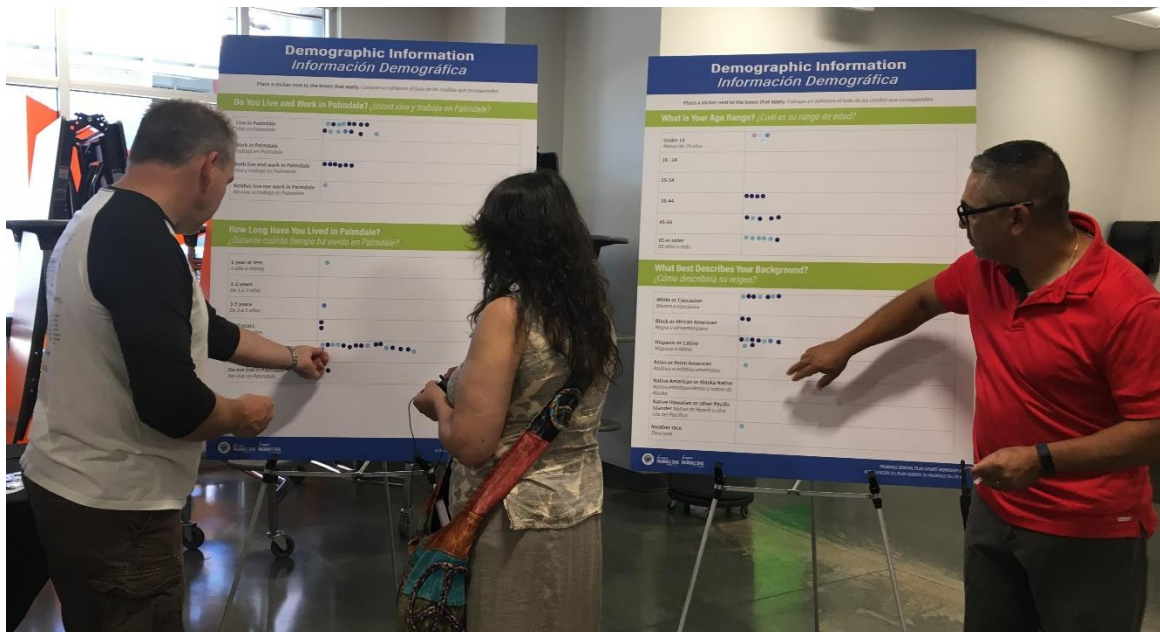


Demographic Information

The following results indicate who participated in each workshop. Note that not all participants completed the demographics survey activity.

Below is a summary of the demographics of both workshops:

- + **Live + Work in Palmdale.** Majority of participants from Saturday’s workshop live in Palmdale also with a number of those who live and work in Palmdale. Tuesday’s workshop had a greater percentage of participants who work in Palmdale or live and work in Palmdale. This could be attributed to the days of the week which events took place.
- + **Tenure in Palmdale.** Majority of participants who attended either workshop have lived in Palmdale for more than ten years.
- + **Age.** Saturday’s workshop included a high percentage of participants under age 18, as well as a high percentage of adults 45 and over. Tuesday’s workshop was primarily adults age 45 and over.
- + **Background.** Both workshops had diverse participation, the most common racial or ethnic background at both meetings were White or Caucasian, Black of African American, and Hispanic or Latino.



Where Do You Live?

The following results indicate where participants from both workshops live in Palmdale. Note that not all participants completed this mapping activity.

Below is a summary of where participants of both workshops live in Palmdale:

- ✦ Workshop participants attended the meeting which took place nearest to their home. Majority of participants at Saturday's workshop live in Palmdale's Eastside, while majority of participants at Tuesday's workshop live in Palmdale's Westside.



What Should Go Where?

The following results indicate what uses and features participants would like to see where in Palmdale. Note that not all participants completed this mapping activity. Participants clustered stickers around the following main areas in Palmdale.

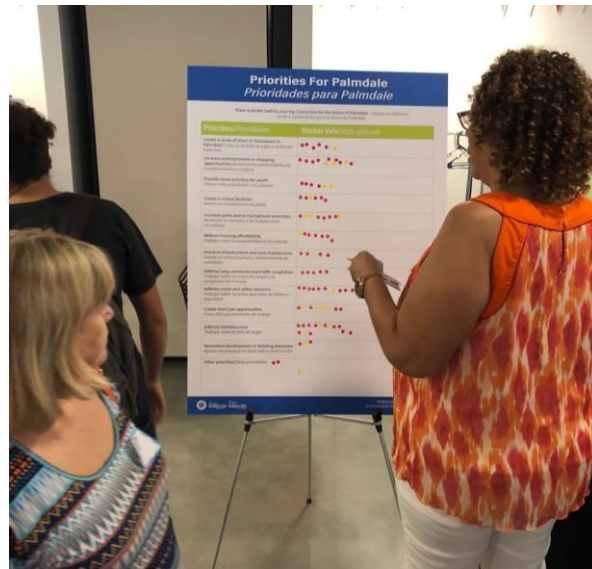
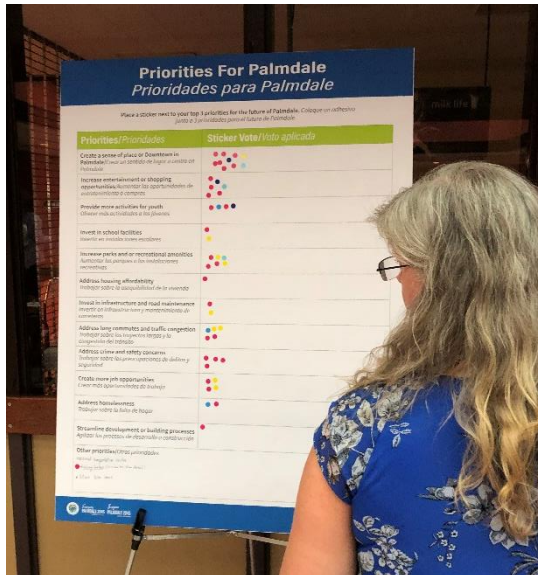


- + Highway 14:
 - Townhouses
 - Multifamily housing
 - Education
 - Bike lanes
 - Enhanced transit
 - Sit down restaurants
 - Parks
 - Entertainment
- + City Hall:
 - Road improvements
 - Bike lanes
 - Sidewalks
 - Entertainment
 - Senior housing
 - Sit down restaurants
- + Palmdale Boulevard:
 - Activities for youth
 - Parks
 - Enhanced transit
 - Townhouses
 - Shopping
 - Professional jobs
 - Sit down restaurants
 - Entertainment
 - Senior housing
- + North Palmdale:
 - Road improvements
 - Education
 - Industrial jobs
- + East Palmdale:
 - Parks
 - Single family homes
- + South Palmdale:
 - Townhomes
 - Multifamily housing
 - Senior housing
 - Sidewalks
 - Road improvements
 - Enhanced transit
 - Education
 - Entertainment
 - Activities for youth
- + West Palmdale:
 - Sidewalks
 - Open space
 - Transit
 - Activities for youth
 - Road improvements
 - Multifamily housing
 - Parks
 - Shopping
- + West Palmdale:
 - Parks
 - Bike lanes
 - Sidewalks
 - Senior housing
 - Single family housing
 - Entertainment
 - Shopping
 - Jobs
 - Activities for youth
 - Restaurants
 - Education

Top Priorities

The following summarizes the top priorities for participants at the two workshops. Note that not all participants completed this activity.

Priorities for Palmdale	Count
Create a sense of place or Downtown in Palmdale	24
Increased entertainment or shopping opportunities	22
Address homelessness	22
Create more job opportunities	21
Address crime and safety concerns	20
Address long commutes and traffic congestion	17
Increase parks/recreation amenities	16
Provide more activities for youth	16
Address housing affordability	13
Invest in school facilities	12
Invest in infrastructure and road maintenance	11
Streamline development or building process	6
Other	6

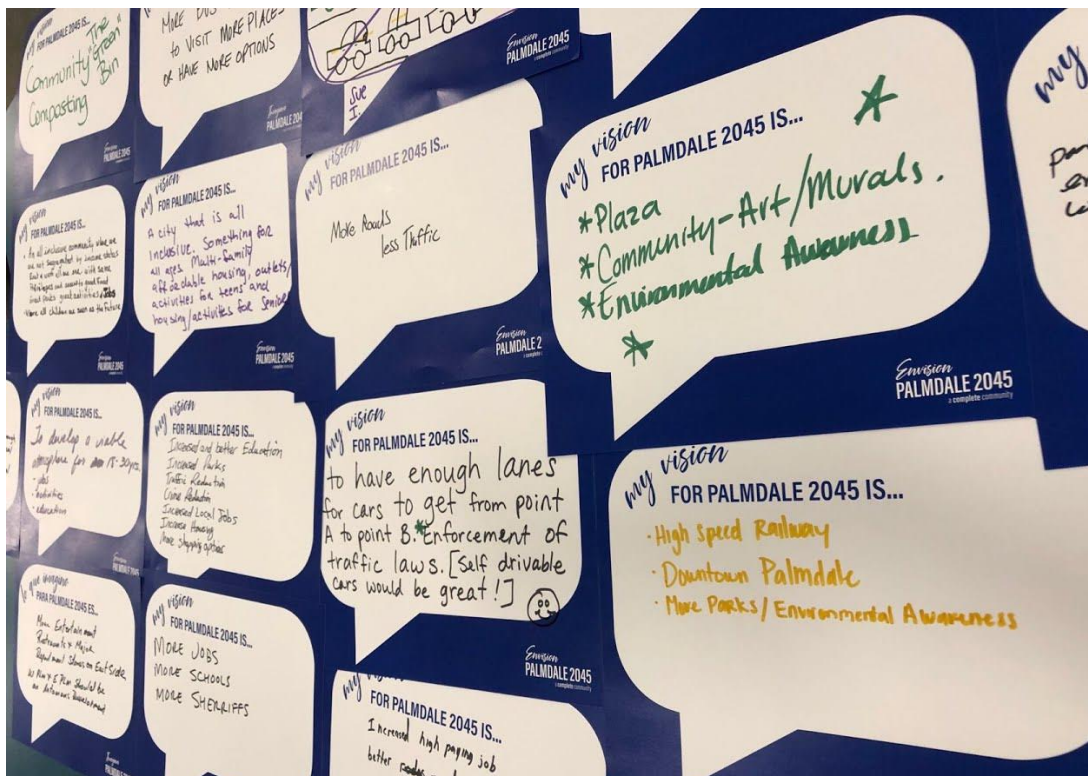


My Vision

The following summarized key concepts from the My Vision exercise. Individual responses to this exercise are at the end of this summary in Appendix A. Note that not all participants completed the My Vision exercise.

Participants envision the following:

- + Safe and tranquil place to live
- + Small town feel
- + Unity between East and West Palmdale
- + Inclusive and balanced city
- + Eco friendly city
- + More entertainment, shopping, and restaurants
- + Activities for youth
- + Public gathering places like a downtown or plaza
- + Revitalized Palmdale Boulevard
- + Reduced traffic and public transportation
- + Affordable and diverse housing
- + Community art
- + Environmental awareness + composting
- + Family activities
- + Increased parks, crosswalks and roads
- + Quality education and trade training
- + More jobs for youth and more high paying jobs
- + Small businesses
- + Collaboration with the City of Lancaster



Appendix A: Workshop Results

Demographic Information

Saturday, August 24, 2019 workshop at The Palmdale Aerospace Academy

<i>Live and Work in Palmdale</i>	<i>Count</i>
Live in Palmdale	24
Work in Palmdale	1
Both live and work in Palmdale	9
Neither live nor work in Palmdale	3

<i>Background</i>	<i>count</i>
White or Caucasian	11
Black or African American	7
Hispanic or Latino	15
Asian or Asian American	1
Native American or Alaska Native	1
Native Hawaiian or Pacific Islander	2
Another Race	2

<i>Tenure in Palmdale</i>	<i>Count</i>
1 year or less	1
1-2 years	1
3-5 years	1
6-10 years	2
More than 10 years	30
Do not live in Palmdale	3

<i>Age</i>	<i>Count</i>
under 18	12
18-24	0
25-34	0
35-44	4
45-64	7
65+	11

Demographic Information Continued

Tuesday August 27, 2019 workshop at Highland High School

<i>Live and Work in Palmdale</i>	<i>Count</i>
Live in Palmdale	12
Work in Palmdale	6
Both live and work in Palmdale	10
Neither live nor work in Palmdale	0

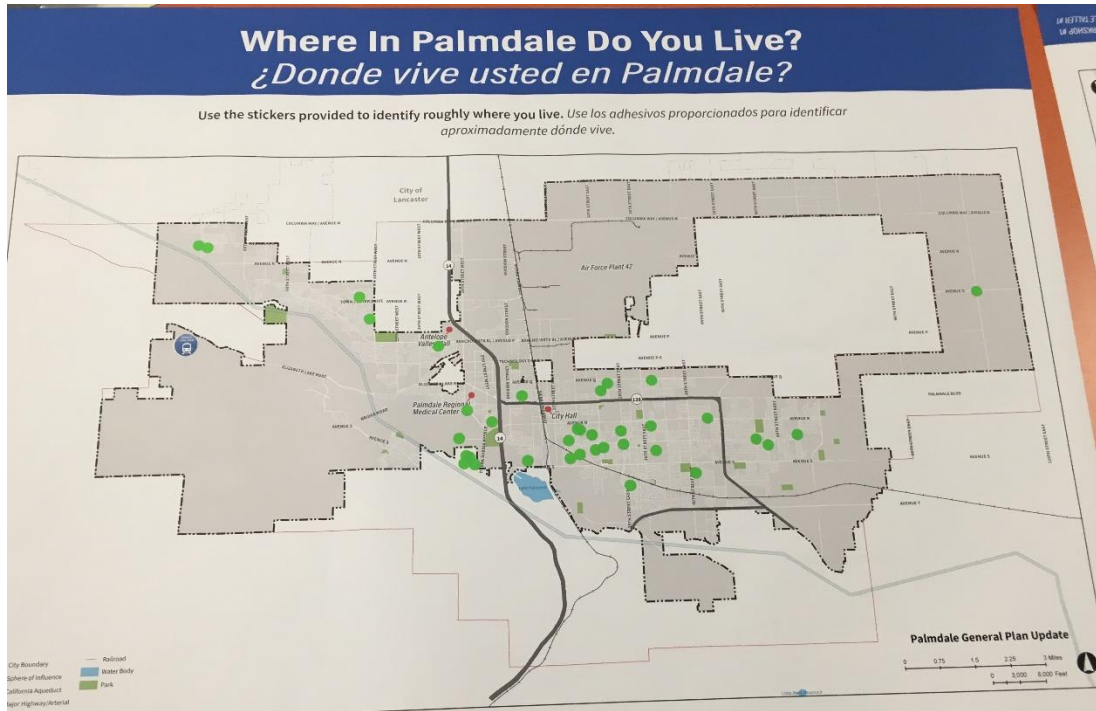
<i>Background</i>	<i>count</i>
White or Caucasian	11
Black or African American	6
Hispanic or Latino	6
Asian or Asian American	1
Native American or Alaska Native	0
Native Hawaiian or Pacific Islander	1
Another Race	0

<i>Tenure in Palmdale</i>	<i>Count</i>
1 year or less	0
1-2 years	2
3-5 years	2
6-10 years	2
More than 10 years	15
Do not live in Palmdale	2

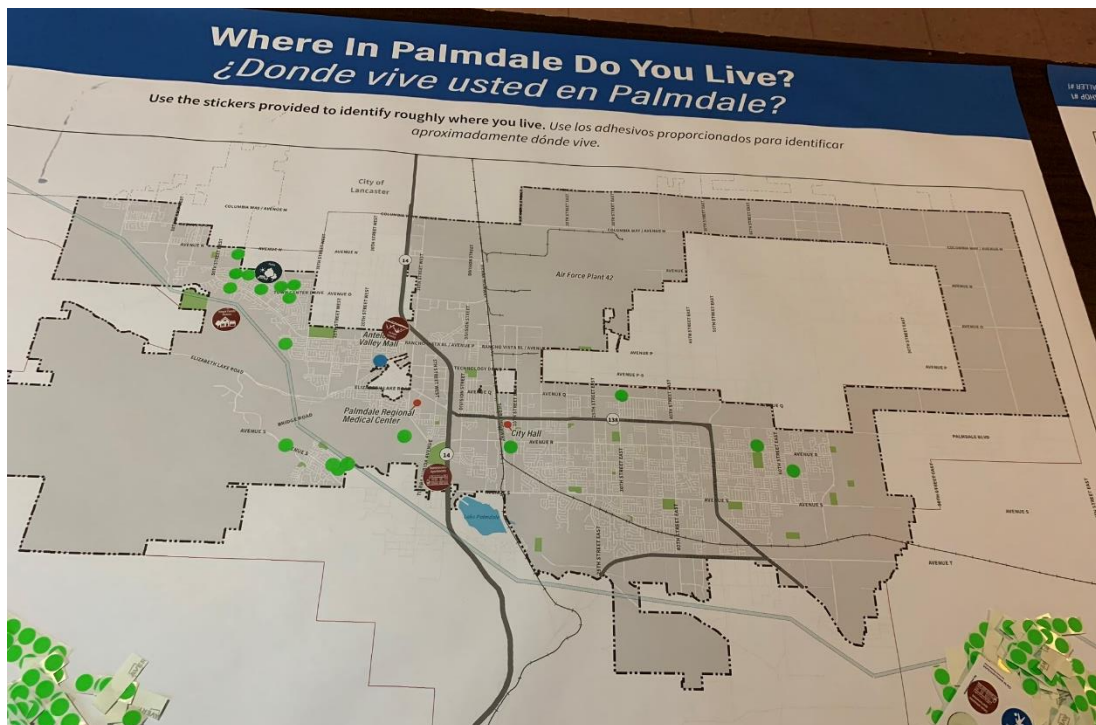
<i>Age</i>	<i>Count</i>
under 18	0
18-24	1
25-34	2
35-44	4
45-64	10
65+	7

Where Do You Live?

Saturday, August 24, 2019 workshop at The Palmdale Aerospace Academy



Tuesday August 27, 2019 workshop at Highland High School

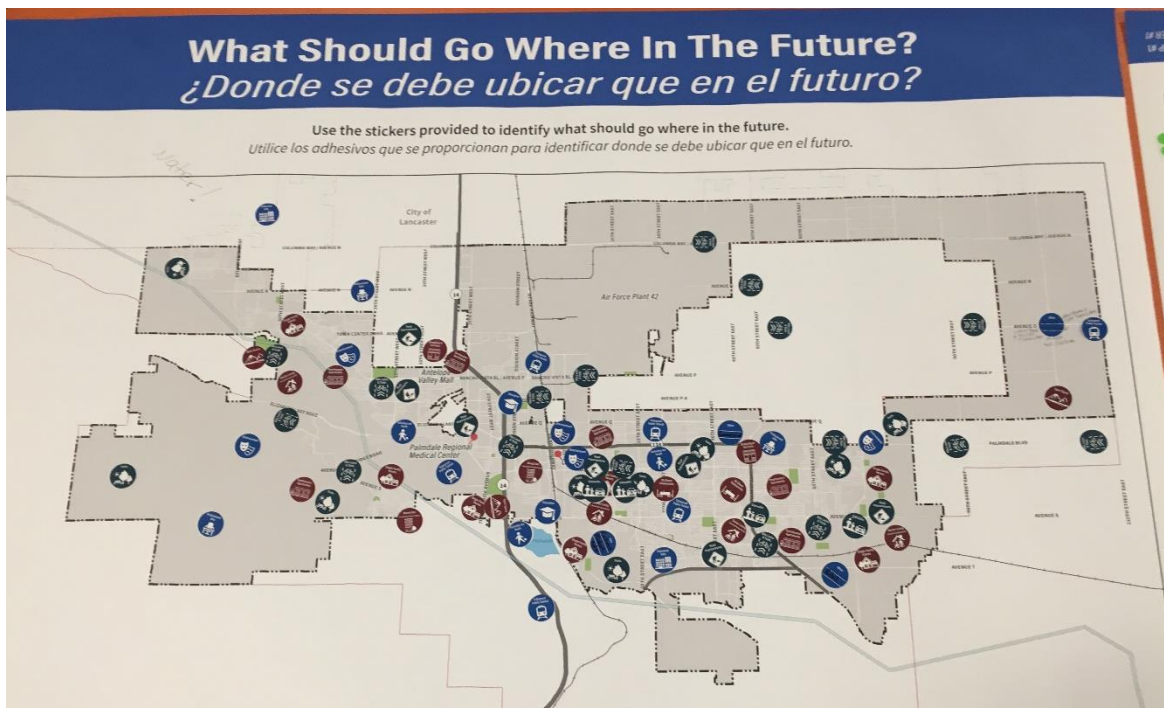


What Goes Where in Palmdale?

Saturday, August 24, 2019 workshop at The Palmdale Aerospace Academy

At Saturday's workshop, participants mapping the following:

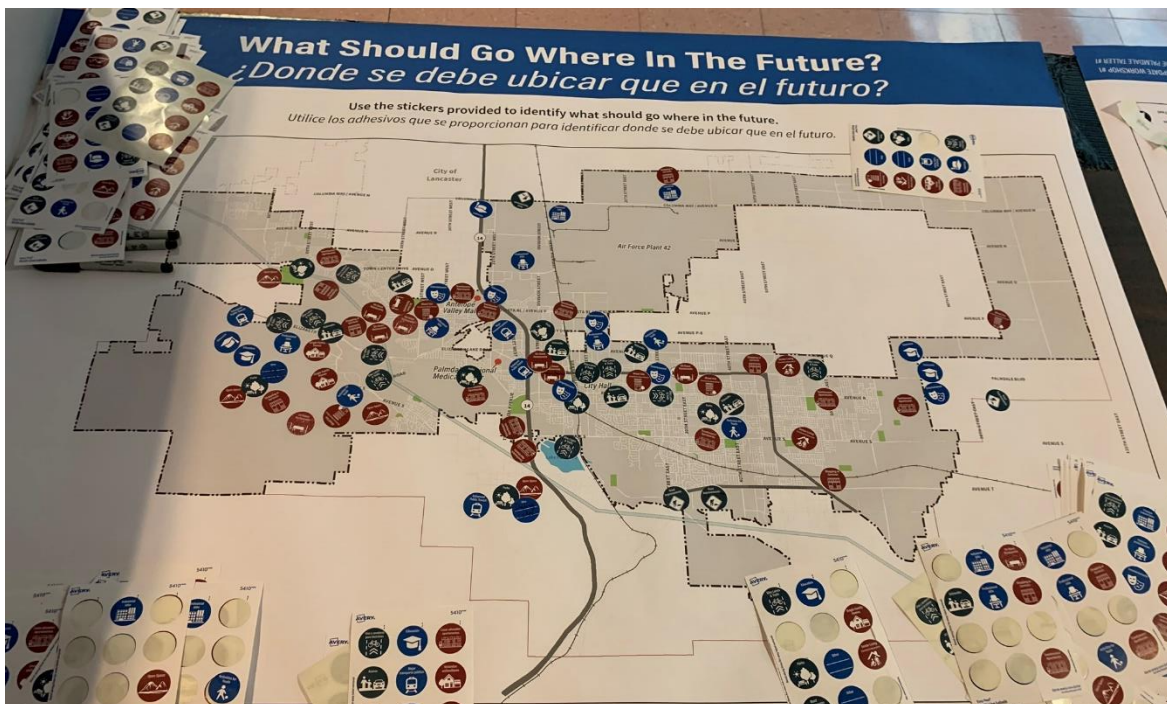
- + Parks, bike lanes, senior housing, single family housing, entertainment, shopping, jobs, and activities for youth in West Palmdale
- + Townhouses, education, bike lanes, and multifamily housing near Highway 14
- + Road improvements, bike lanes, sidewalks, entertainment, senior housing, and restaurants near City Hall
- + Activities for youth, parks, transportation enhancements, townhouses, shopping, professional jobs, and restaurants along Palmdale Boulevard
- + Parks, single family homes, townhomes, senior housing, road improvements, transit, and sidewalks in East Palmdale
- + Sidewalks on the outer edges of the City
- + Open space, transit, activities for youth in South Palmdale



Tuesday August 27, 2019 workshop at Highland High School

At Tuesday's workshop, participants mapping the following:

- + Restaurants, education, shopping, sidewalks and bike lanes in West Palmdale
- + Multifamily housing, transportation, restaurants, parks, and entertainment near Highway 14
- + Road improvements, education, employment in North Palmdale
- + Bike lanes and sidewalks near City Hall
- + Entertainment, restaurants, shopping and senior housing near Palmdale Boulevard.
- + Education, entertainment, parks, multifamily housing, townhouses, activities for youth, and sidewalks in East Palmdale
- + Road improvements, multifamily housing, parks, open space, and shopping in South Palmdale



Top Priorities in Palmdale

- ✦ At Saturday’s workshop the top priority was homelessness, followed by entertainment and shopping, crime and safety concerns, and more job opportunities.
- ✦ At Tuesday’s workshop the top priority was creating a sense of place in Palmdale, followed by entertainment and shopping, and more job opportunities.

Saturday, August 24, 2019 workshop at The Palmdale Aerospace Academy

<i>Priorities for Palmdale</i>	<i>Count</i>
Create a sense of place or Downtown in Palmdale	10
Increased entertainment or shopping opportunities	12
Provide more activities for youth	10
Invest in school facilities	9
Increase parks/recreation amenities	8
Address housing affordability	9
Invest in infrastructure and road maintenance	8
Address long commutes and traffic congestion	10
Address crime and safety concerns	13
Create more job opportunities	12
Address homelessness	18
Streamline development or building process	4
other	4

Tuesday, August 27, 2019 workshop at Highland High School

<i>Priorities for Palmdale</i>	<i>Count</i>
Create a sense of place or Downtown in Palmdale	14
Increased entertainment or shopping opportunities	10
Provide more activities for youth	6
Invest in school facilities	3
Increase parks/recreation amenities	8
Address housing affordability	4
Invest in infrastructure and road maintenance	3
Address long commutes and traffic congestion	7
Address crime and safety concerns	7
Create more job opportunities	9
Address homelessness	4
Streamline development or building process	2
other	2

My Vision

The following summarized key concepts from the My Vision exercise. Individual responses to this exercise are at the end of this summary in Appendix A. Note that not all participants completed the My Vision exercise.

At Saturday's workshop, participants envision the following:

- + More entertainment, shopping, and restaurants
- + Inclusive city
- + Public gathering places like a downtown or plaza
- + Reduced traffic and public transportation
- + Safe place to live
- + Affordable and diverse housing
- + Community art
- + Environmental awareness + composting
- + Family activities
- + Increased parks, crosswalks and roads
- + Quality education and trade training
- + More jobs for youth and more high paying jobs



At Tuesday's workshop, participants envision the following:

- + Revitalized downtown at Palmdale Boulevard
- + Balanced city
- + Outdoor activities including water sports
- + Eco friendly city
- + Small businesses
- + More jobs
- + Entertainment for all ages
- + Free activities for youth
- + Unity between East and West Palmdale
- + Safe and tranquil place to live
- + Small town feel
- + Collaboration with the City of Lancaster